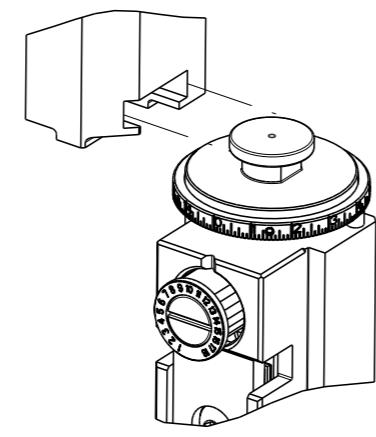


PART NUMBER	REVISION	DESCRIPTION	FEED TYPE
2151070-1	K	FINE CRIMP HEIGHT ADJUST	MECHANICAL
2151070-2	K	FINE CRIMP HEIGHT ADJUST	PNEUMATIC
7-2151070-1	K	MECHANICAL AND CRIMP TOOLING KIT	MECHANICAL
7-2151070-2	K	PNEUMATIC AND CRIMP TOOLING KIT	PNEUMATIC
7-2151070-7	A	CRIMP TOOLING KIT	-

ATLANTIC VERSION TERMINATOR INTERFACE ADAPTER



APPLICATOR DATA		
CRIMP	SIZE	TYPE
WIRE	3.30 mm [.130]	F
INSUL	4.57 mm [.180]	OV

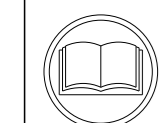
APPLICATOR INSTRUCTIONS 408-35042

TERMINAL DATA: TE TERMINAL		TE CRIMP SPECIFICATION	
TERMINAL NAME: STANDARD POWER TIMER CONTACT			
WIRE STRIP LENGTH		INSULATION DIAMETER RANGE	
4.40-5.00 mm [.173-.197 IN]		Ø3.30-4.50 mm [.130-.177 IN]	
TERMINAL APPLICATION SPECIFICATION	(A)114-18037		
	(B)114-18388		
TERMINALS APPLIED			
TE TERMINAL	TE TERMINAL	TE TERMINAL	TE TERMINAL
(A) 964328-1	(A) 964328-5	(B) 1241406-1	(B) 1241406-3
(B) 1-2208461-1	(B) 1-2208461-3		
		(B)1-2208461-1	(B)1-2208461-3

TERMINAL DATA: TE TERMINAL		TE CRIMP SPECIFICATION	
TERMINAL NAME: STANDARD POWER TIMER CONTACT			
WIRE STRIP LENGTH		INSULATION DIAMETER RANGE	
4.40-5.00 mm [.173-.197 IN]		Ø3.30-4.50 mm [.130-.177 IN]	
TERMINAL APPLICATION SPECIFICATION			
TERMINALS APPLIED			
TE TERMINAL	TE TERMINAL	TE TERMINAL	TE TERMINAL
1241406-1	964328-1	-	-

WIRE SIZE	CRIMP HEIGHT mm [INCH]	CRIMP HEIGHT REFERENCE SETTING
4.00mm2	2.35+/-0.05 [.093+/- .002]	4.3
3.50mm2	2.24+/-0.05 [.088+/- .002]	5.9
3.00mm2	2.13+/-0.05 [.084+/- .002]	6.8

WIRE SIZE	CRIMP HEIGHT mm [INCH]	CRIMP HEIGHT REFERENCE SETTING
Ø1.50mm2+2.50mm2	2.35+/-0.05 [.093+/- .002]	4.3



1 RECOMMENDED SPARE PARTS

2 REFER TO SUPPLIED INSTRUCTION SHEET FOR CLEANING, LUBRICATION AND STORAGE OF APPLICATOR.

3 APPLY PART NUMBER 2-23419-6 LOCTITE TO THREADS OF ITEM 242.

4 CRIMP HEIGHT REFERENCE SETTING WAS THE SETTING USED WHEN THE APPLICATOR WAS QUALIFIED AT THE FACTORY. ADJUSTMENT MAY BE NECESSARY WHEN RUNNING APPLICATOR IN THE FIELD.

5 TERMINAL LUBRICANT IS RECOMMENDED.

6. UNLESS SPECIFIED OTHERWISE TORQUE VALUES SHALL BE USED PER DOCUMENT, 101-35000.

7 USE ITEM 34 WITH TERMINAL 964328.

8 USE ITEM 261 WITH TERMINAL 1241406.

9 THIS CRIMP PARAMETER IS PROVIDED TO MEET A CUSTOM AND UNIQUE CUSTOMER REQUIREMENT. IT HAS BEEN EVALUATED AND IS CONDITIONALLY SPECIFIED BY TE CONNECTIVITY. THIS CUSTOMIZED CRIMP PARAMETER IS NOT LISED AS AN APPROVED APPLICATION WITHIN A TE CONNECTIVITY APPLICATION SPECIFICATION; HOWEVER, IT HAS BEEN VALIDATED ACCORDING TO TE CONNECTIVITY SPECIFICATIONS 109-18079 (TEST GROUP 1) AND 114-18022. **TE CONNECTIVITY EXPRESSLY DISCLAIMS ANY AND ALL WARRANTIES THAT THE PRODUCT WILL PERFORM SIMILARLY TO VALIDATED AND APPROVED APPLICATIONS, AS STATED WITHIN TE CONNECTIVITY APPLICATION SPECIFICATIONS, INCLUDING BUT NOT LIMITED TO IMPLIED WARRANTIES OF MERCHANTABILITY OR FITNESS FOR PARTICULAR PURPOSE.** AS SUCH, IT IS HIGHLY RECOMMENDED THAT THE CUSTOMER PERFORM FURTHER DETAILED EVALUATION TO ASSESS PRODUCT PERFORMANCE IN THE SPECIFIC APPLICATION.

**\*WARNING**  
ON INSTALLATION, SET WIRE DISC TO CRIMP HEIGHT REFERENCE SETTING FOR LARGEST WIRE SIZE. CRIMP HEIGHT REFERENCE SETTINGS GREATER THAN THE VALUE SHOWN MAY CAUSE DAMAGE TO THE CRIMP TOOLING. REFER TO THE INSTRUCTION SHEET FOR PROPER SETUP AND ADJUSTMENTS

LOC	DIST	REVISIONS			
A	66	REV	DATE	BY	CHKD
		H	03APR2018	TB	JDG
		H1	14AUG2018	FZ	KZ
		J	02APR2019	LG	TE
		K	22MAR2021	JWC	RR

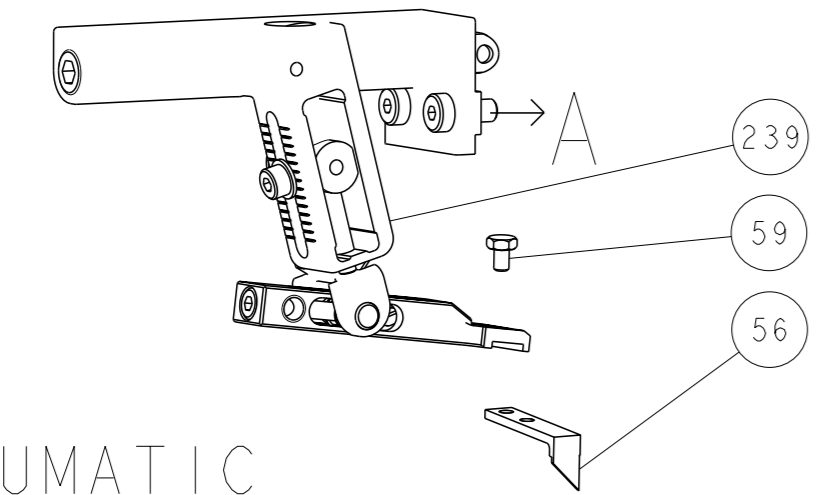
QTY	REF	REF	REF	REF	REF	DESCRIPTION	ITEM NO
1	1	1	1	1	1-1752356-5	SUPPORT, TERMINAL	261
1	-	1	-	-	2119641-1	FEED CAM, AIR FEED	248
1	1	1	1	1	2119082-7	CAM, SNAIL, INSULATION ADJUSTMENT	244
1	1	1	1	1	2079764-1	WASHER, WAVE SPRING, CREST-TO-CREST	243
1	1	1	1	1	2119083-1	RETAINER, INSULATION DIAL	242
1	-	1	1	1	18023-1	SCR, SKT HD CAP M3 X 5.0	241
1	-	1	-	1	2119580-1	MECHANICAL FEED ASSEMBLY	239
1	-	1	-	1	2844940-1	AIR FEED MODULE	238
1	REF	REF	REF	REF	994970-2	COUNTER, MAGNETIC	164
1	1	1	1	1	2119955-1	ASSY, LUBRICATOR, SIDE FEED	113
1	1	1	1	1	2844908-1	SCREW, LOCKING	99
1	1	1	1	1	2844907-1	POST, LOCKING	98
1	1	1	1	1	455888-5	SPACER, CRIMPER	82
1	1	1	1	1	1803607-3	DOCUMENTATION PACKAGE	71
1	1	1	1	1	2119791-9	DEPRESSOR, WIRE	70
1	1	1	1	1	2119740-1	TAG, IDENTIFICATION	67
2	2	2	2	2	2168078-1	SCREW, DRIVE, RH, RoHS, 2 x .188	66
1	1	1	1	1	2168083-2	SCR, SKT HD CAP, RoHS, M4 X 8.0	60
1	1	1	1	1	5-18022-5	SCR, HEX HD CAP, M4 X 6.0	59
1	1	1	1	1	1338685-1	PAWL, FEED	56
4	4	4	4	4	2168083-3	SCR, SKT HD CAP, RoHS, M4 X 12.0	54
2	2	2	2	2	1-2168083-0	SCR, SKT HD CAP, RoHS, M4 X 10	53
1	1	1	1	1	1803382-2	HOLD DOWN, SPRING LOADED	50
1	2	1	2	2	18023-9	SCR, SKT HD CAP M4 X 6.0	49
-	-	1	-	1	2119652-1	FEED CAM, PRE FEED	48
-	-	1	-	1	2119653-1	FEED CAM, POST FEED	47
1	1	1	1	1	1803583-9	APPLICATOR BASIC ASSEMBLY, SF	46
1	1	1	1	1	1803515-1	RAM ASSEMBLY, SF ATLANTIC	44
1	1	1	1	1	1803602-1	SCR, BHSC, RoHS (M8 X 25)	41
1	1	1	1	1	1-1752356-1	SUPPORT, TERMINAL	34
2	2	2	2	2	1-2079383-3	SCR, BHSC, RoHS (M4 X 25)	33
2	2	2	2	2	3-2844962-5	SPACER, CYLINDRICAL, STRIP GUIDE	30
1	1	1	1	1	2844992-2	ASSEMBLY, STRIP GUIDE	29
1	1	1	1	1	1-455888-0	SPACER, CRIMPER	28
1	1	1	1	1	1320928-2	STRIP GUIDE	24
1	1	1	1	1	2168083-2	SCR, SKT HD CAP, RoHS, M4 X 8.0	21
2	2	2	2	2	1-18028-2	WASHER, FLAT, REG M4	20
1	1	1	1	1	2119533-1	STRIPPER, SIDE FEED	19
1	1	1	1	1	2119806-1	INSERT, SHEAR	13
1	1	1	1	1	3-22280-3	SPRING, COMPRESSION	12
1	1	1	1	1	1-356885-4	STOP, SHEAR	11
1	1	1	1	1	2119805-1	SHEAR HOLDER, FRONT	10
1	1	1	1	1	454276-5	FLOATING SHEAR, FRONT	9
1	2	2	1	1	1333209-1	ANVIL, COMBINATION .130	8
1	1	1	1	1	1-2119757-0	DEPRESSOR, SHEAR	5
1	1	1	1	1	1-238011-7	BLOCK, CRIMPER SPACER	4
1	2	2	1	1	2119785-3	CRIMPER, INSULATION OVERLAP PREMIUM	3
1	2	2	1	1	456410-4	CRIMPER, WIRE PREMIUM	1

ATLANTIC VERSION  
Shown on sheets 1 of 4 & 2 of 4  
(Pacific version shown on sheets 3 of 4 & 4 of 4)

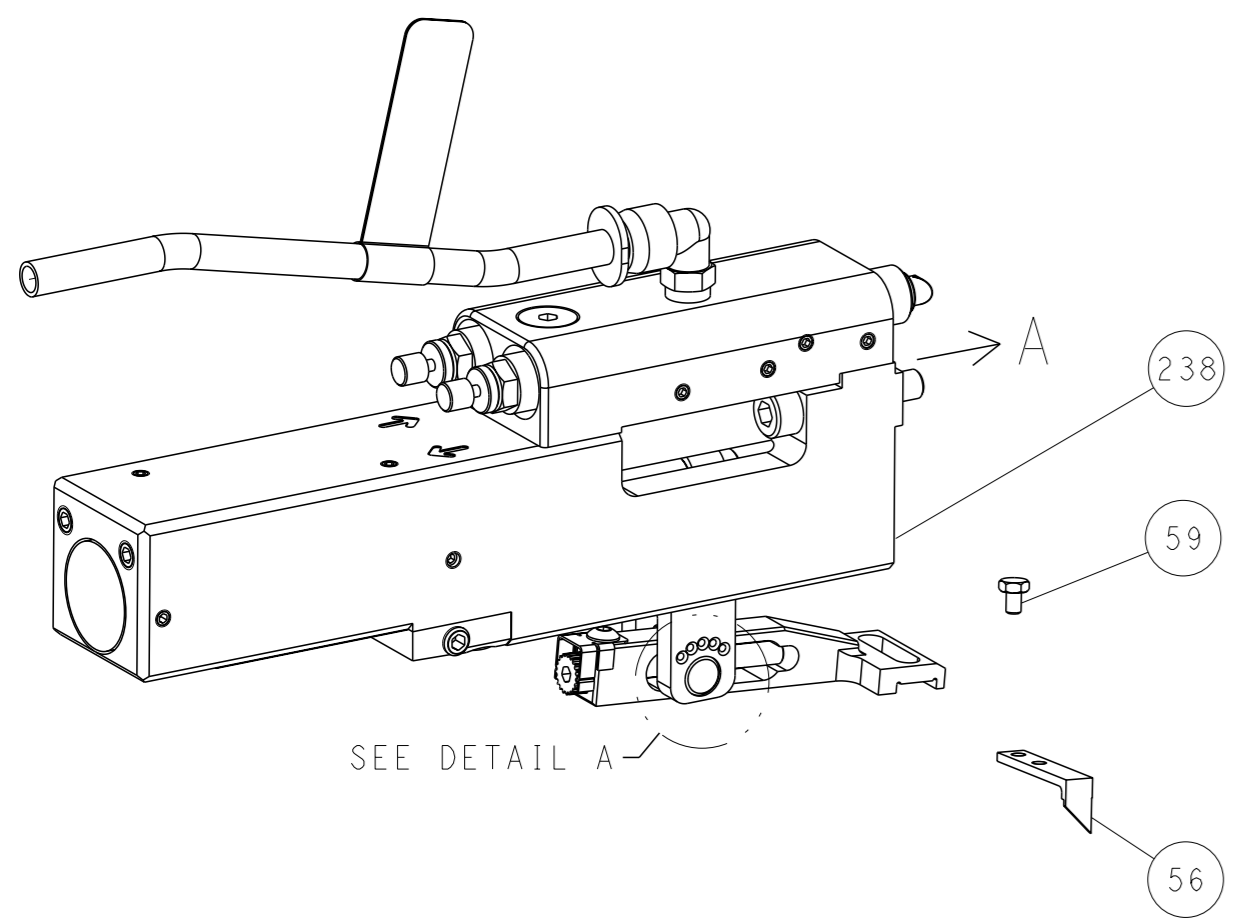
DIMENSIONS:	TOLERANCES UNLESS OTHERWISE SPECIFIED:	OWN	CHK	DATE	REV	DESCRIPTION	ITEM NO
mm	0 PLC ± 1 PLC ± 2 PLC ± 3 PLC ± 4 PLC ± ANGLES ±	H. HUANG	S. XI	16SEP2011	16SEP2011	TE Connectivity Harrisburg, PA 17105-3608	
		APVD	J. CRUZ	16SEP2011		Ocean Side Feed Applicator	
MATERIAL	FINISH	WEIGHT	SCALE	SHEET	REV		
			1:2	1 of 4	K		

LOC	DIST	REVISIONS					
A	66	P	LYR	DESCRIPTION	DATE	OWN	APVD
		-		SEE SHEET 1	-	-	-

# FEED TYPE MECHANICAL



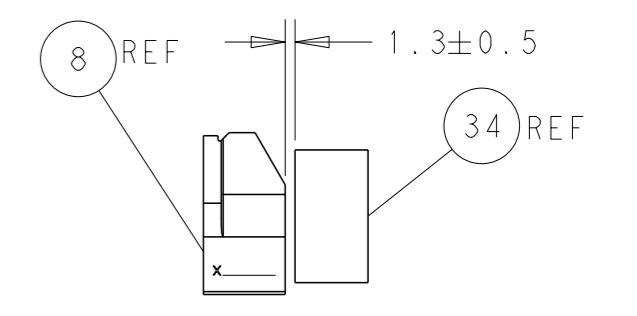
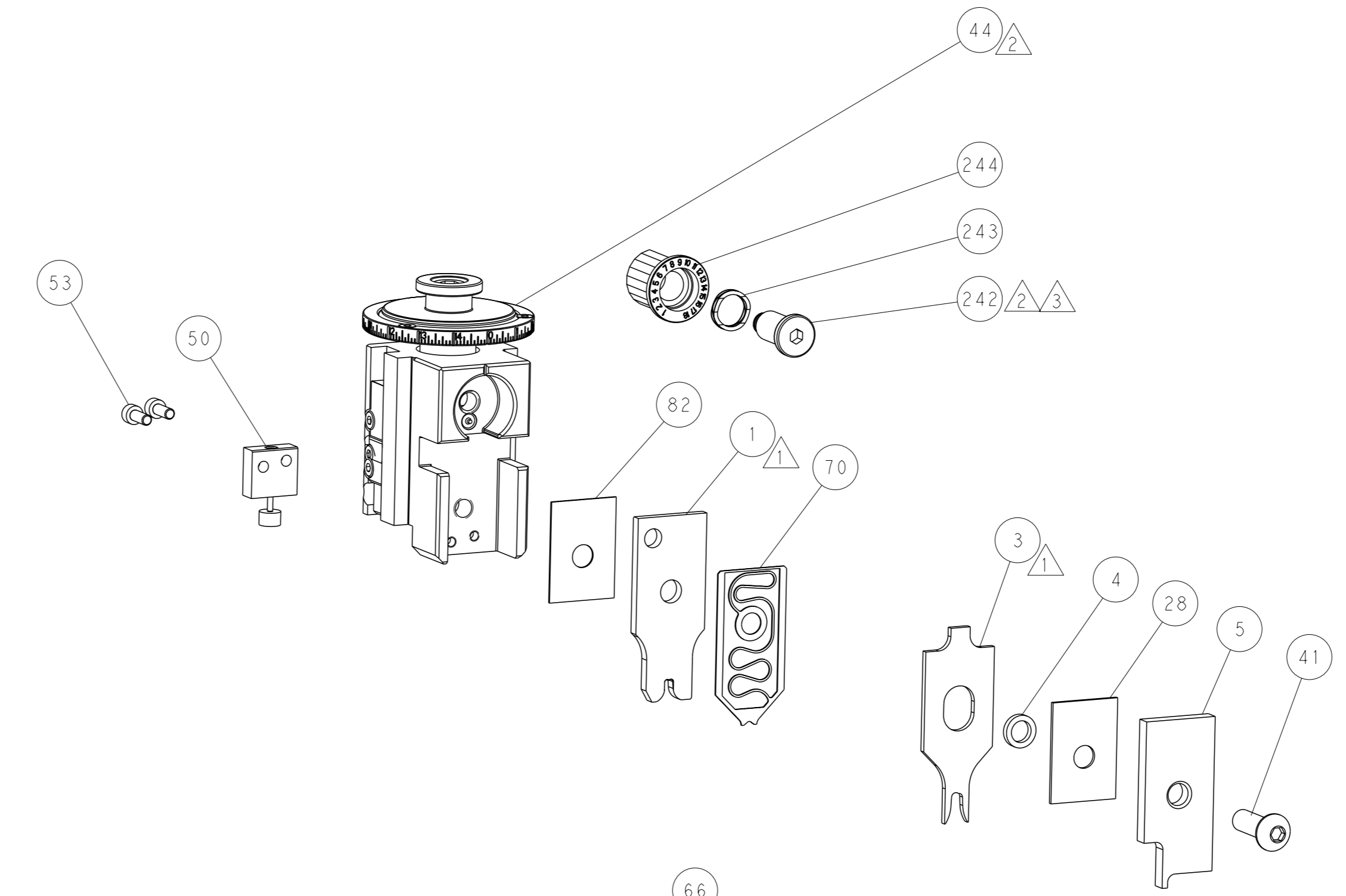
## PNEUMATIC



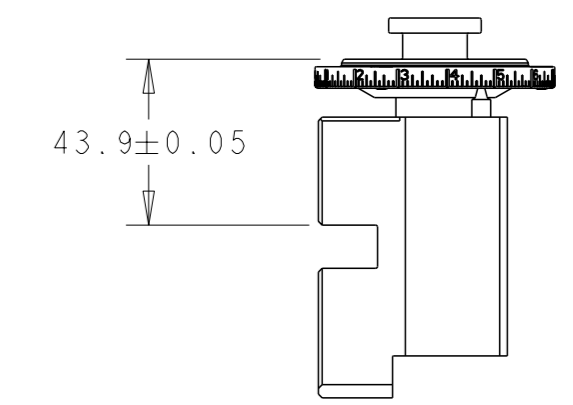
## FEED SPRING SETTING POSITION (SHOWN FROM REAR SIDE)



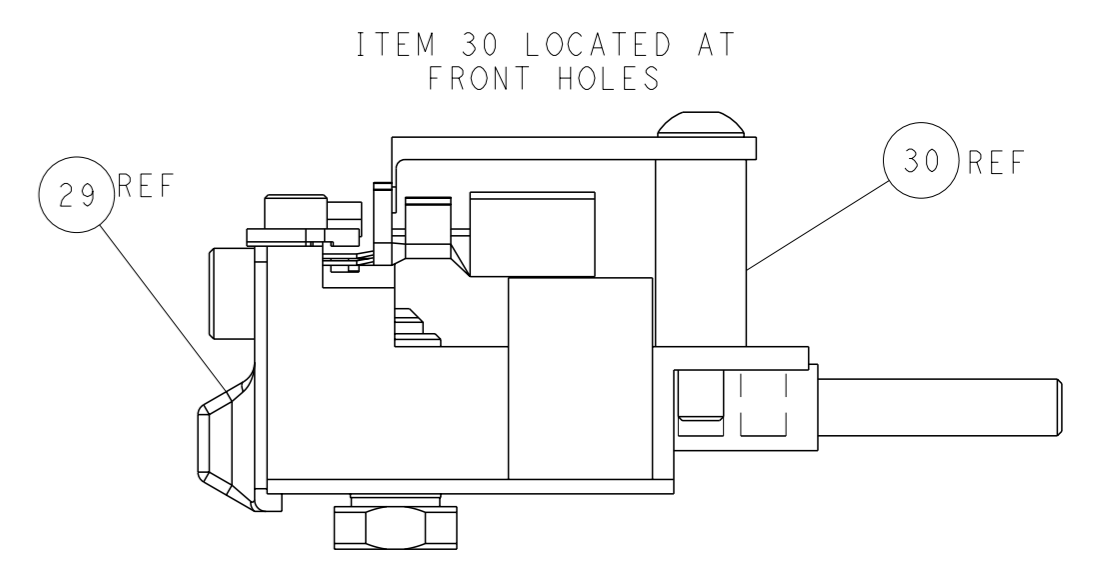
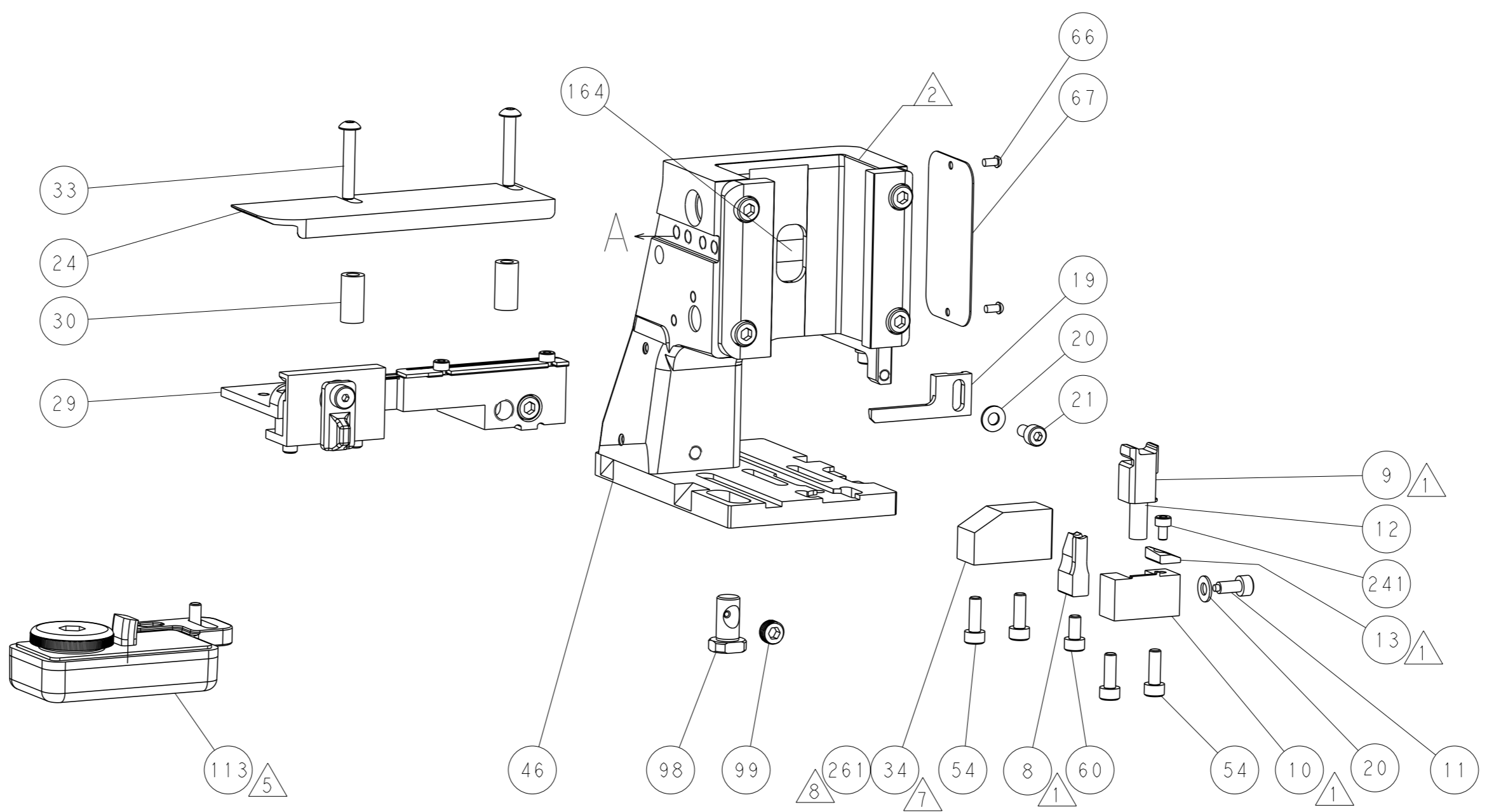
DETAIL A



TERMINAL SUPPORT LOCATION

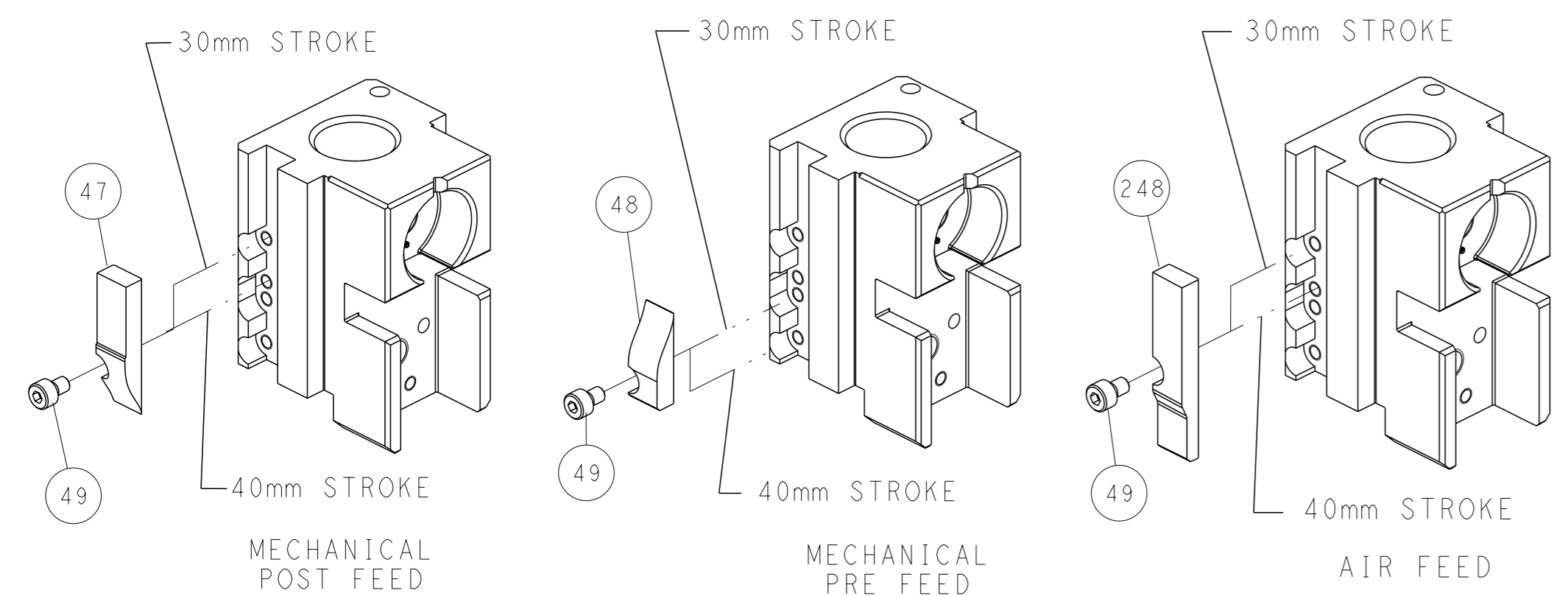


RAM SET-UP



FEED TRACK POSITION GUIDE BY INSULATION BARREL

# CAM POSITIONS

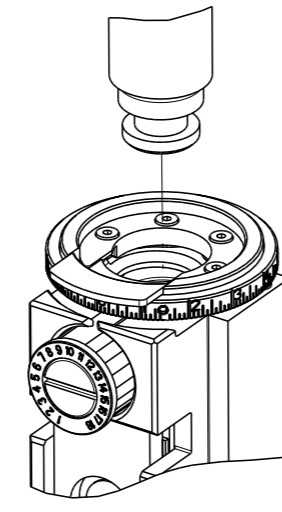


**ATLANTIC VERSION**  
 Shown on sheets 1 of 4 & 2 of 4  
 (Pacific version shown on sheets 3 of 4 & 4 of 4)

DIMENSIONS: mm TOLERANCES UNLESS OTHERWISE SPECIFIED: 0 PLC ± 1 PLC ± 2 PLC ± 3 PLC ± 4 PLC ± ANGLES FINISH ±		OWN: K. HUANG 16SEP2011 CHK: S. XI 16SEP2011 APVD: J. CRUZ 01JUN2011 PRODUCT SPEC APPLICATION SPEC WEIGHT: - MATERIAL: -	NAME: Ocean Side Feed Applicator SIZE: A1 CAGE CODE: 00779 DRAWING NO: C=2151070 SCALE: 1:2 SHEET: 2 of 4 REV: K	TE Connectivity Harrisburg, PA 17105-3608 RESTRICTED TO Customer Accessible Production Drawing
--	--	--	--	---

PART NUMBER	REVISION	DESCRIPTION	FEED TYPE
2-2151070-1	K	FINE CRIMP HEIGHT ADJUST	MECHANICAL
2-2151070-2	K	FINE CRIMP HEIGHT ADJUST	PNEUMATIC
7-2151070-7	A	CRIMP TOOLING KIT	-

PACIFIC VERSION TERMINATOR  
INTERFACE ADAPTER



APPLICATOR DATA		
CRIMP	SIZE	TYPE
WIRE	3.30 mm [.130]	F
INSUL	4.57 mm [.180]	OV
APPLICATOR INSTRUCTIONS 408-35042		

TERMINAL DATA: TE TERMINAL		TE CRIMP SPECIFICATION	
TERMINAL NAME: STANDARD POWER TIMER CONTACT			
WIRE STRIP LENGTH		INSULATION DIAMETER RANGE	
4.40-5.00 mm [.173-.197 IN]		Ø3.30-4.50 mm [.130-.177 IN]	
TERMINAL APPLICATION SPECIFICATION	(A)114-18037	-	-
	(B)114-18388	-	-
TERMINALS APPLIED			
TE TERMINAL	TE TERMINAL	TE TERMINAL	TE TERMINAL
(A) 964328-1	(A) 964328-5	(B) 1241406-1	(B) 1241406-3
(B) 1-2208461-1	(B) 1-2208461-3		

TERMINAL DATA: TE TERMINAL		TE CRIMP SPECIFICATION	
TERMINAL NAME: STANDARD POWER TIMER CONTACT			
WIRE STRIP LENGTH		INSULATION DIAMETER RANGE	
4.40-5.00 mm [.173-.197 IN]		Ø3.30-4.50 mm [.130-.177 IN]	
TERMINAL APPLICATION SPECIFICATION	-	-	-
	-	-	-
TERMINALS APPLIED			
TE TERMINAL	TE TERMINAL	TE TERMINAL	TE TERMINAL
1241406-1	964328-1	-	-

WIRE SIZE	CRIMP HEIGHT mm [INCH]	CRIMP HEIGHT REFERENCE SETTING
4.00mm2	2.35+/-0.05 [.093+/-0.002]	4.3
3.50mm2	2.24+/-0.05 [.088+/-0.002]	5.9
3.00mm2	2.13+/-0.05 [.084+/-0.002]	6.8

WIRE SIZE	CRIMP HEIGHT mm [INCH]	CRIMP HEIGHT REFERENCE SETTING
1.50mm2+2.50mm2	2.35+/-0.05 [.093+/-0.002]	4.3

- 1 RECOMMENDED SPARE PARTS
- 2 REFER TO SUPPLIED INSTRUCTION SHEET FOR CLEANING, LUBRICATION AND STORAGE OF APPLICATOR.
- 3 APPLY PART NUMBER 2-23419-6 LOCTITE TO THREADS OF ITEM 242.
- 4 CRIMP HEIGHT REFERENCE SETTING WAS THE SETTING USED WHEN THE APPLICATOR WAS QUALIFIED AT THE FACTORY. ADJUSTMENT MAY BE NECESSARY WHEN RUNNING APPLICATOR IN THE FIELD.
- 5 TERMINAL LUBRICANT IS RECOMMENDED.
- 6. UNLESS SPECIFIED OTHERWISE TORQUE VALUES SHALL BE USED PER DOCUMENT, 101-35000.
- 7 USE ITEM 34 WITH TERMINAL 964328.
- 8 USE ITEM 261 WITH TERMINAL 1241406.
- 9 THIS CRIMP PARAMETER IS PROVIDED TO MEET A CUSTOM AND UNIQUE CUSTOMER REQUIREMENT. IT HAS BEEN EVALUATED AND IS CONDITIONALLY SPECIFIED BY TE CONNECTIVITY. THIS CUSTOMIZED CRIMP PARAMETER IS NOT LISED AS AN APPROVED APPLICATION WITHIN A TE CONNECTIVITY APPLICATION SPECIFICATION; HOWEVER, IT HAS BEEN VALIDATED ACCORDING TO TE CONNECTIVITY SPECIFICATIONS 109-18079 (TEST GROUP 1) AND 114-18022. **TE CONNECTIVITY EXPRESSLY DISCLAIMS ANY AND ALL WARRANTIES THAT THE PRODUCT WILL PERFORM SIMILARLY TO VALIDATED AND APPROVED APPLICATIONS, AS STATED WITHIN TE CONNECTIVITY APPLICATION SPECIFICATIONS, INCLUDING BUT NOT LIMITED TO IMPLIED WARRANTIES OF MERCHANTABILITY OR FITNESS FOR PARTICULAR PURPOSE.** AS SUCH, IT IS HIGHLY RECOMMENDED THAT THE CUSTOMER PERFORM FURTHER DETAILED EVALUATION TO ASSESS PRODUCT PERFORMANCE IN THE SPECIFIC APPLICATION.

**\*WARNING**  
ON INSTALLATION, SET WIRE DISC TO CRIMP HEIGHT REFERENCE SETTING FOR LARGEST WIRE SIZE. CRIMP HEIGHT REFERENCE SETTINGS GREATER THAN THE VALUE SHOWN MAY CAUSE DAMAGE TO THE CRIMP TOOLING. REFER TO THE INSTRUCTION SHEET FOR PROPER SETUP AND ADJUSTMENTS

LOC	DIST	REVISIONS					
A	66	P	LYR	DESCRIPTION	DATE	OWN	APVD
		-		SEE SHEET 1	-	-	-

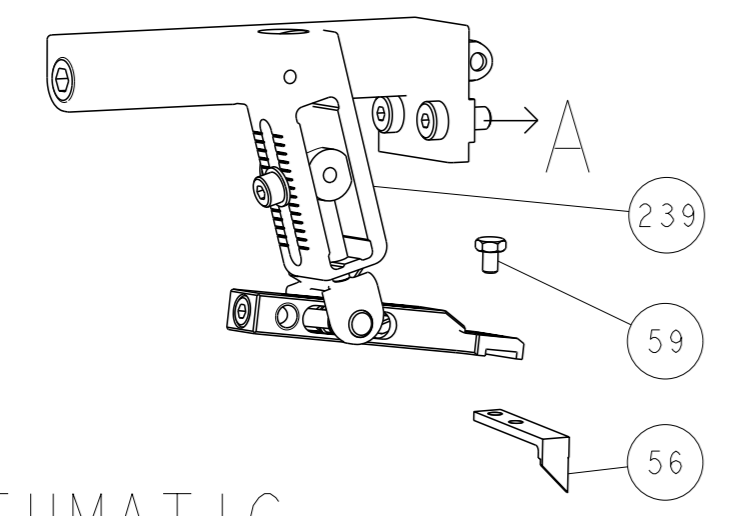
8	-	1	1	1-1752356-5	SUPPORT, TERMINAL	261
	-	1	1	2119082-7	CAM, SNAIL, INSULATION ADJUSTMENT	244
	-	1	1	2079764-1	WASHER, WAVE SPRING, CREST-TO-CREST	243
3	-	1	1	2119083-1	RETAINER, INSULATION DIAL	242
	-	1	1	18023-1	SCR, SKT HD CAP M3 X 5.0	241
	-	-	1	2119580-1	MECHANICAL FEED ASSEMBLY	239
	-	1	-	2844940-1	AIR FEED MODULE	238
	-	REF	REF	994970-2	COUNTER, MAGNETIC	164
	-	1	-	2119641-2	FEED CAM, AIR FEED	151
	-	1	1	2168083-8	SCR, SKT HD CAP, RoHS, M4 X 16	144
	-	4	4	2168083-9	SCR, SKT HD CAP, RoHS, M4 X 20	143
	-	-	1	2119653-2	FEED CAM, POST FEED	142
	-	1	1	1-1803583-0	APPLICATOR BASIC ASSEMBLY, SF	141
	-	1	1	1803516-1	RAM ASSEMBLY, SF PACIFIC	140
5	-	1	1	2119955-1	ASSY, LUBRICATOR, SIDE FEED	113
	-	1	1	2844908-1	SCREW, LOCKING	99
	-	1	1	2844907-1	POST, LOCKING	98
	-	1	1	455888-5	SPACER, CRIMPER	82
	-	1	1	1803607-3	DOCUMENTATION PACKAGE	71
	-	1	1	2119791-9	DEPRESSOR, WIRE	70
	-	1	1	2119740-1	TAG, IDENTIFICATION	67
	-	2	2	2168078-1	SCREW, DRIVE, RH, RoHS, 2 x .188	66
	-	1	1	5-18022-5	SCR, HEX HD CAP, M4 X 6.0	59
	-	1	1	1338685-1	PAWL, FEED	56
	-	2	2	1-2168083-0	SCR, SKT HD CAP, RoHS, M4 X 10	53
	-	1	1	1803382-2	HOLD DOWN, SPRING LOADED	50
	-	1	2	18023-9	SCR, SKT HD CAP M4 X 6.0	49
	-	-	1	2119652-1	FEED CAM, PRE FEED	48
	-	1	1	1803602-1	SCR, BHSC, RoHS (M8 X 25)	41
7	-	1	1	1-1752356-1	SUPPORT, TERMINAL	34
	-	2	2	1-2079383-3	SCR, BHSC, RoHS (M4 X 25)	33
	-	2	2	3-2844962-5	SPACER, CYLINDRICAL, STRIP GUIDE	30
	-	1	1	2844992-2	ASSEMBLY, STRIP GUIDE	29
	-	1	1	1-455888-0	SPACER, CRIMPER	28
	-	1	1	1320928-2	STRIP GUIDE	24
	-	1	1	2168083-2	SCR, SKT HD CAP, RoHS, M4 X 8.0	21
	-	2	2	1-18028-2	WASHER, FLAT, REG M4	20
	-	1	1	2119533-1	STRIPPER, SIDE FEED	19
8	-	1	1	2119806-1	INSERT, SHEAR	13
	-	1	1	3-22280-3	SPRING, COMPRESSION	12
	-	1	1	1-356885-4	STOP, SHEAR	11
	-	1	1	2119805-1	SHEAR HOLDER, FRONT	10
9	-	1	1	454276-5	FLOATING SHEAR, FRONT	9
1	1	1	1	1333209-1	ANVIL, COMBINATION .130	8
	-	1	1	1-2119757-0	DEPRESSOR, SHEAR	5
	-	1	1	1-238011-7	BLOCK, CRIMPER SPACER	4
1	1	1	1	2119785-3	CRIMPER, INSULATION OVERLAP PREMIUM	3
1	1	1	1	456410-4	CRIMPER, WIRE PREMIUM	1
	-	77	-22	-21	PART NO	ITEM NO

PACIFIC VERSION  
Shown on sheets 3 of 4 & 4 of 4  
(Atlantic version shown on sheets 1 of 4 & 2 of 4)

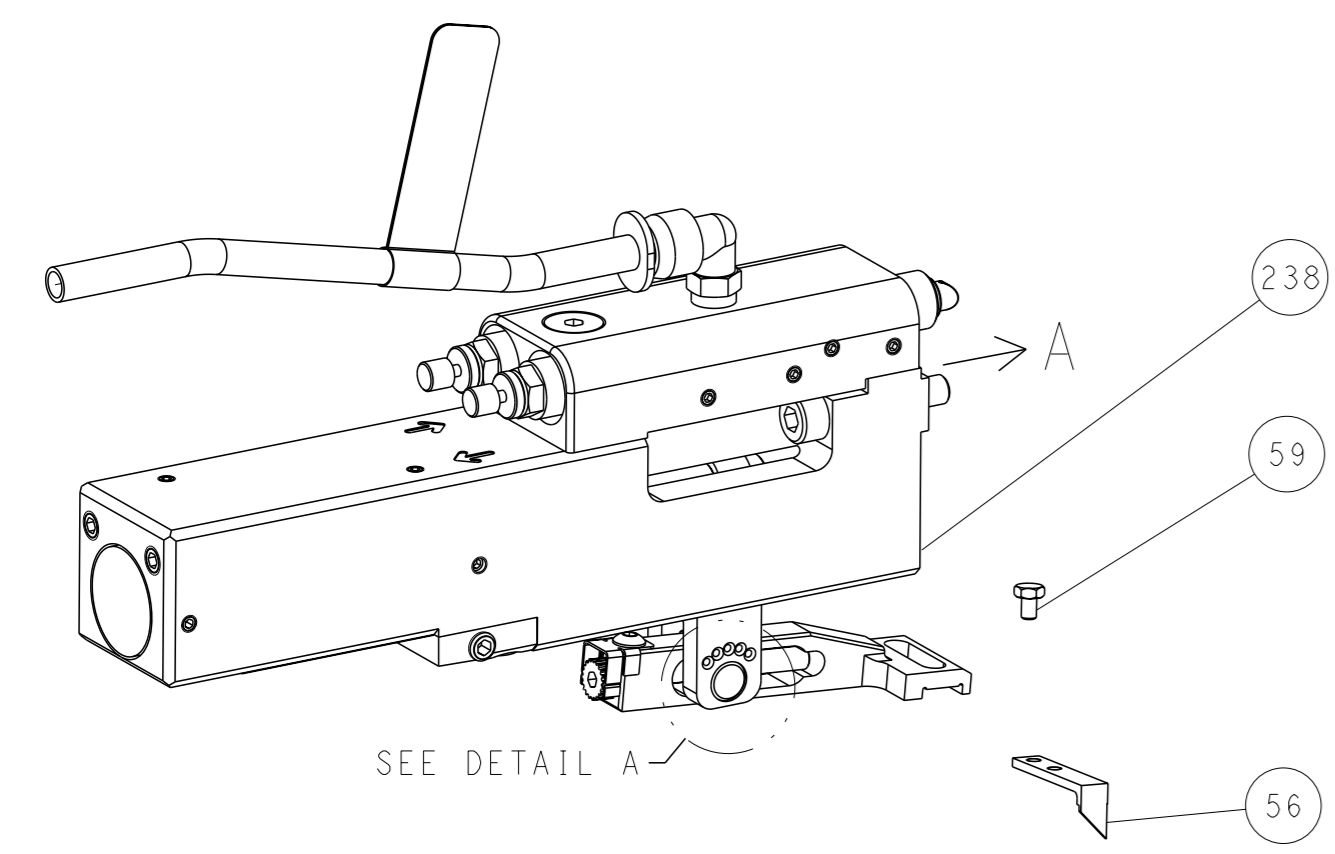
DIMENSIONS:		TOLERANCES UNLESS OTHERWISE SPECIFIED:		OWN	H. HUANG	16SEP2011	TE Connectivity Harrisburg, PA 17105-3608
mm		0 PLC ±		CHK	S. XI	16SEP2011	
		1 PLC ±		APVD	J. CRUZ	16SEP2011	NAME Ocean Side Feed Applicator
		2 PLC ±		PRODUCT SPEC			
		3 PLC ±		APPLICATION SPEC			SIZE
		4 PLC ±					CAGE CODE
		ANGLES FINISH					DRAWING NO
				WEIGHT			00779
							©=2151070
							Customer Accessible Production Drawing
							SCALE 1:2 SHEET 3 of 4 REV K

LOC		DIST		REVISIONS			
A	66	P	LYR	DESCRIPTION	DATE	OWN	APVD
		-		SEE SHEET 1			

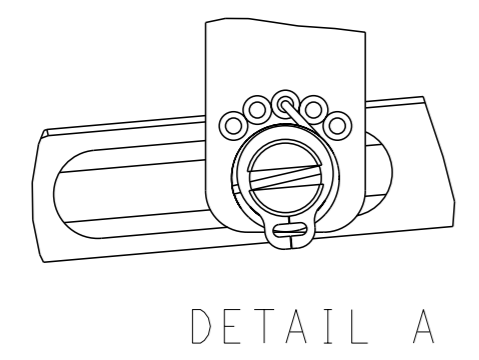
# FEED TYPE MECHANICAL



## PNEUMATIC

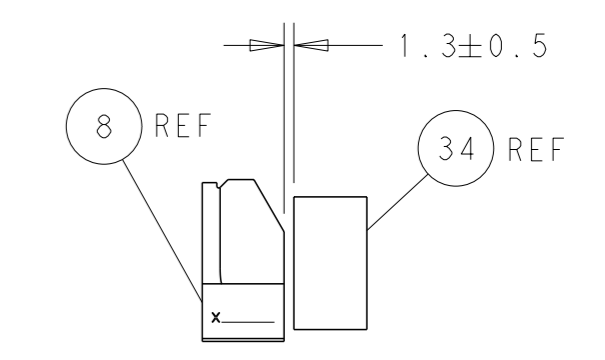
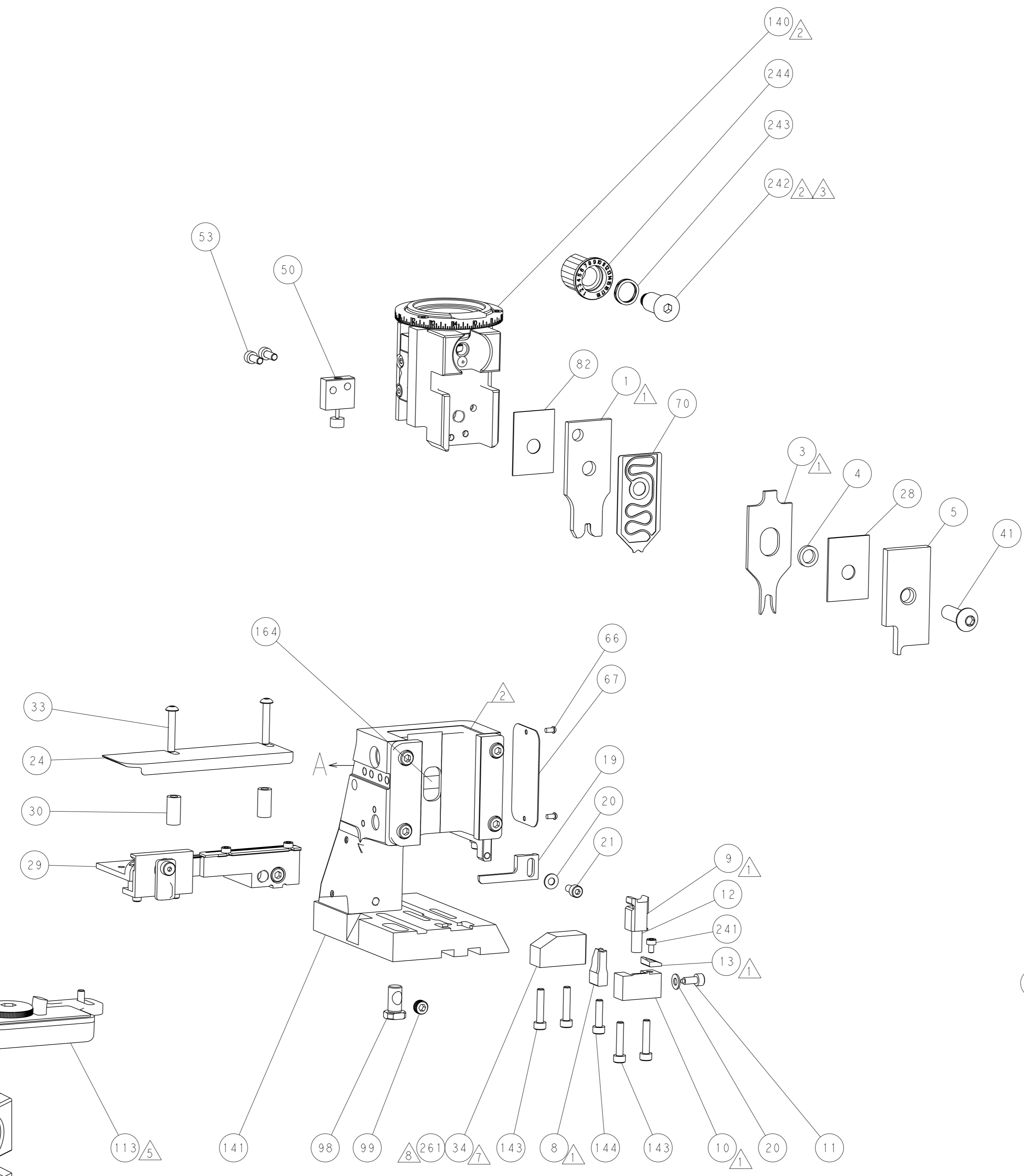
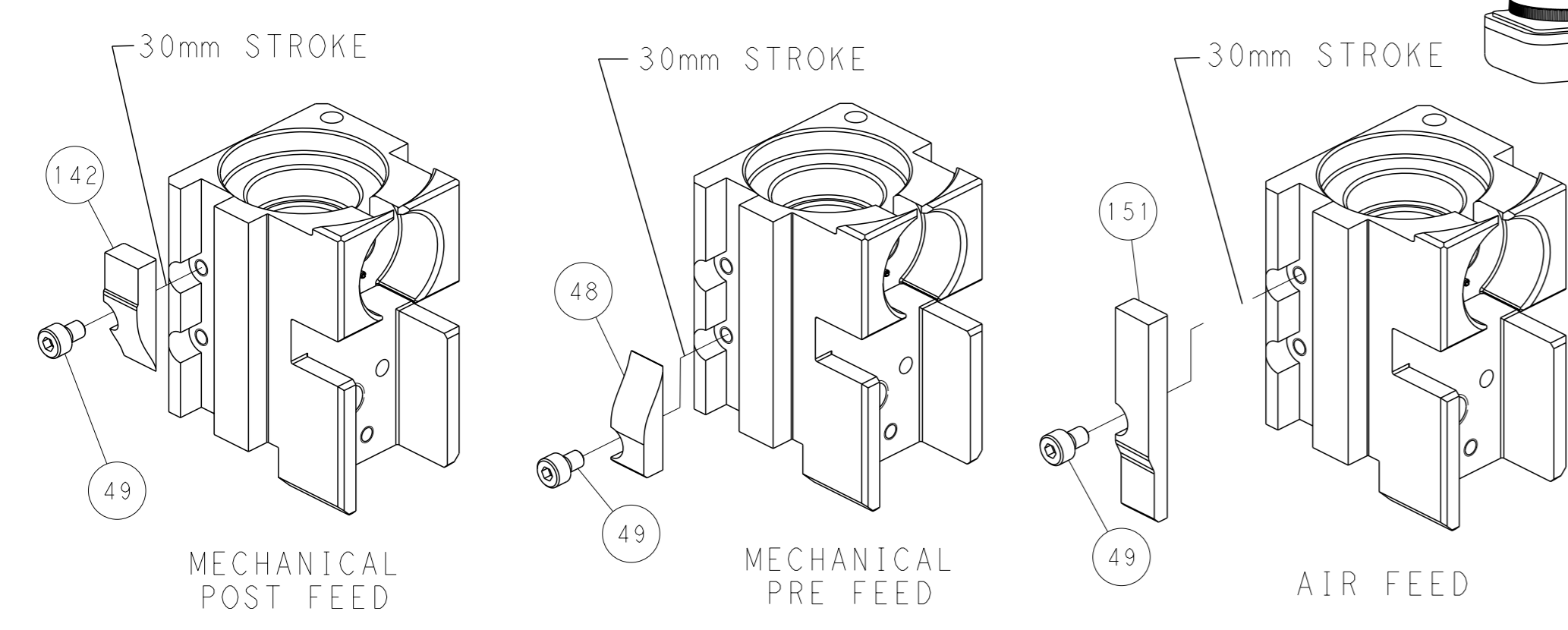


## FEED SPRING SETTING POSITION (SHOWN FROM REAR SIDE)

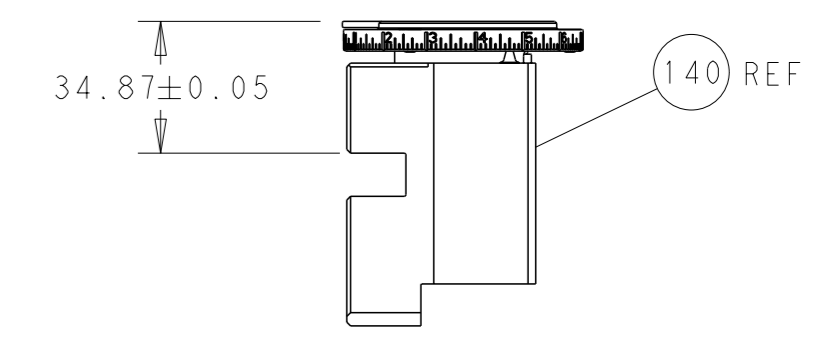


DETAIL A

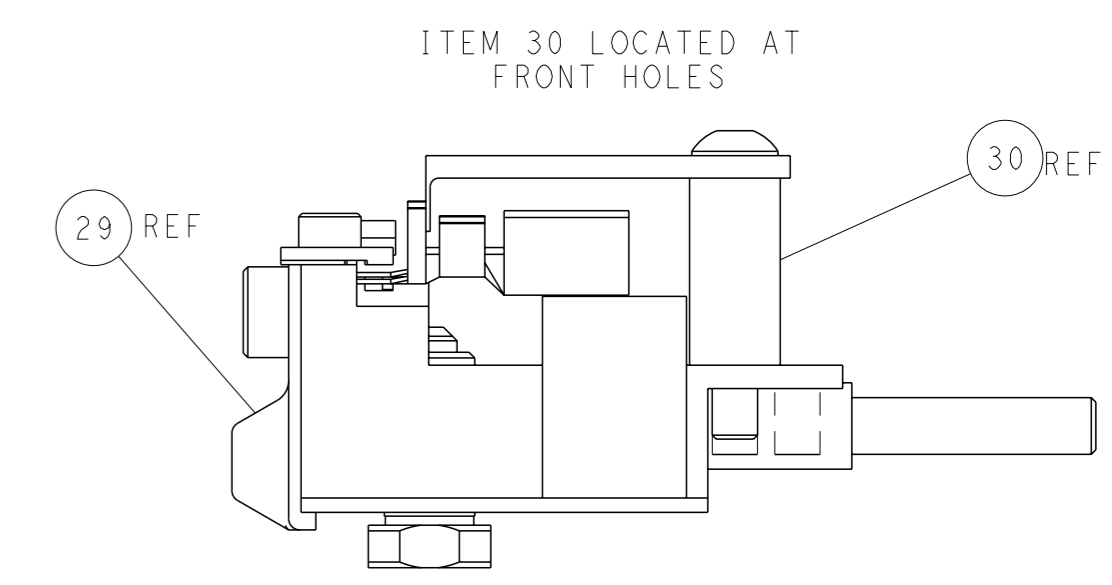
# CAM POSITIONS



TERMINAL SUPPORT LOCATION



RAM SET-UP



FEED TRACK POSITION GUIDE BY INSULATION BARREL

**PACIFIC VERSION**  
 Shown on sheets 3 of 4 & 4 of 4  
 (Atlantic version shown on sheets 1 of 4 & 2 of 4)

DIMENSIONS: mm 		TOLERANCES UNLESS OTHERWISE SPECIFIED: 0 PLC ± 1 PLC ± 2 PLC ± 3 PLC ± 4 PLC ± ANGLES FINISH ±*		OWN: H. HUANG 16SEP2011 CHK: S. XI 16SEP2011 APVD: J. CRUZ 16SEP2011 PRODUCT SPEC APPLICATION SPEC WEIGHT: - MATERIAL: -		NAME: Ocean Side Feed Applicator SIZE: A1 CAGE CODE: 00779 DRAWING NO: ©=2151070 SCALE: 1:2 SHEET: 4 of 4 REV: K	
--------------------	--	---	--	--	--	--	--