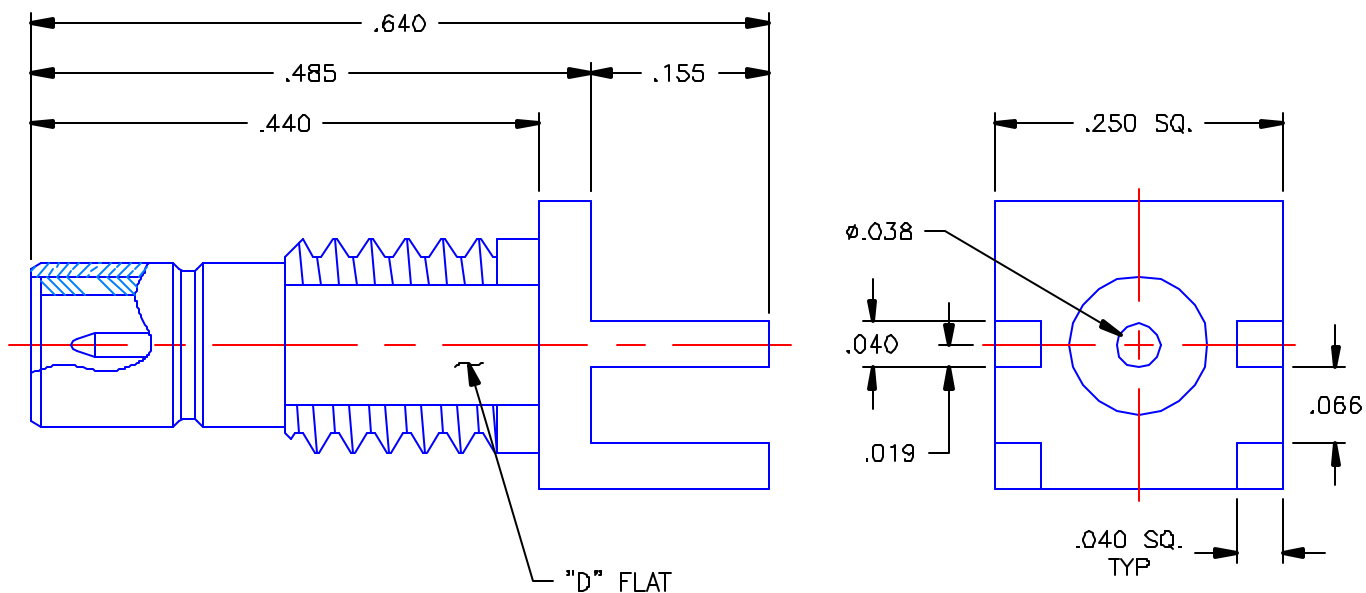


PROPRIETARY INFORMATION  
 NOT TO BE RELEASED  
 WITHOUT WRITTEN PERMISSION  
 FROM AN AUTHORIZED  
 REPRESENTATIVE OF  
 APPLIED ENGINEERING PRODUCTS

REVISIONS			
REV	DESCRIPTION	DATE	APPROVED
-	INITIAL RELEASE	08/03/05	D.N.




NOTES:

MATERIALS:

1. BODY & CONTACT = BRASS PER ASTM B16, ALLOY C36000, TEMPER H02.
2. INSULATOR = VIRGIN WHITE TEFLON PER ASTM D1710, GRADE 1, TYPE I, CLASS "B".

FINISHES:

1. BODY = GOLD PLATE PER MIL-G-45204, TYPE II, CLASS 0, GRADE C, OVER .00010 TO .00020 COPPER STRIKE PER MIL-C-14550.
2. CONTACT = GOLD PLATE PER MIL-G-45204, TYPE II, CLASS 1, GRADE C, OVER .00010 TO .00020 STRESS FREE SULFAMATE NICKEL PER QQ-N-290.

UNLESS OTHERWISE SPECIFIED DIMENSIONS ARE IN INCHES TOLERANCES ON		DWN. D N	DATE 08/02/05	 <b>APPLIED ENGINEERING PRODUCTS</b> 104 John W. Murphy Dr. New Haven, CT 06513		
DECIMAL	ANGLE	CHKD: A.D.M.	DATE 08/03/05			
		APVD: D.J.C.	DATE 08/03/05	SMB STRAIGHT MALE JACK P.C.B. MOUNT RECEPTACLE FOR .062 BOARD		
REFERENCE:		MATERIALS & FINISHES: SEE NOTES				SIZE A
ORIGINATOR: D.N. DATE: 08/02/05				DWG. NO. 2109-1511-011		REV -
				SCALE 6:1	THIRD ANGLE PROJECTION	SHEET 1 OF 1

2109-1511-011