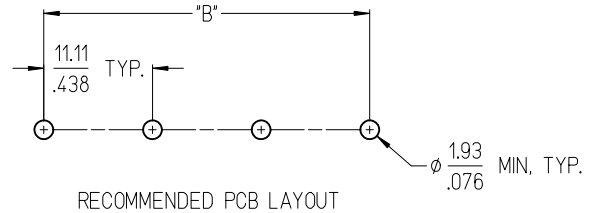


| QTY CKTS | DIM "A" | | DIM "B" (B) | | MATERIAL NO. -A-C OPT | MATERIAL NO. -A-C-50 OPT |
|----------|---------|-------|-------------|------------|-----------------------|--------------------------|
| | MM | INCH | ±0.25 MM | ±.010 INCH | | |
| 2 | 24.5 | 0.97 | 11.11 | 0.438 | 387319802 | 387320002 |
| 3 | 35.7 | 1.40 | 22.23 | 0.875 | 387319803 | 387320003 |
| 4 | 46.8 | 1.84 | 33.34 | 1.313 | 387319804 | 387320004 |
| 5 | 57.9 | 2.28 | 44.45 | 1.750 | 387319805 | 387320005 |
| 6 | 69.0 | 2.72 | 55.56 | 2.188 | 387319806 | 387320006 |
| 7 | 80.1 | 3.15 | 66.68 | 2.625 | 387319807 | 387320007 |
| 8 | 91.2 | 3.59 | 77.79 | 3.063 | 387319808 | 387320008 |
| 9 | 102.3 | 4.03 | 88.90 | 3.500 | 387319809 | 387320009 |
| 10 | 113.4 | 4.47 | 100.01 | 3.938 | 387319810 | 387320010 |
| 11 | 124.6 | 4.90 | 111.13 | 4.375 | 387319811 | 387320011 |
| 12 | 135.7 | 5.34 | 122.24 | 4.813 | 387319812 | 387320012 |
| 13 | 146.8 | 5.78 | 133.35 | 5.250 | 387319813 | 387320013 |
| 14 | 157.9 | 6.22 | 144.46 | 5.688 | 387319814 | 387320014 |
| 15 | 169.0 | 6.65 | 155.58 | 6.125 | 387319815 | 387320015 |
| 16 | 180.1 | 7.09 | 166.69 | 6.563 | 387319816 | 387320016 |
| 17 | 191.2 | 7.53 | 177.80 | 7.000 | 387319817 | 387320017 |
| 18 | 202.3 | 7.97 | 188.91 | 7.438 | 387319818 | 387320018 |
| 19 | 213.5 | 8.40 | 200.03 | 7.875 | 387319819 | 387320019 |
| 20 | 224.6 | 8.84 | 211.14 | 8.313 | 387319820 | 387320020 |
| 21 | 235.7 | 9.28 | 222.25 | 8.750 | 387319821 | 387320021 |
| 22 | 246.8 | 9.72 | 233.36 | 9.188 | 387319822 | 387320022 |
| 23 | 257.9 | 10.15 | 244.48 | 9.625 | 387319823 | 387320023 |
| 24 | 269.0 | 10.59 | 255.59 | 10.063 | 387319824 | 387320024 |
| 25 | 280.1 | 11.03 | 266.70 | 10.500 | 387319825 | 387320025 |
| 26 | 291.2 | 11.47 | 277.81 | 10.938 | 387319826 | 387320026 |
| 27 | 302.4 | 11.90 | 288.93 | 11.375 | 387319827 | 387320027 |
| 28 | 313.5 | 12.34 | 300.04 | 11.813 | 387319828 | 387320028 |
| 29 | 324.6 | 12.78 | 311.15 | 12.250 | 387319829 | 387320029 |



- NOTES:
1. MATERIAL: SEE DETAILS
 2. FINISHES: SEE DETAILS
 3. PRODUCT SPECIFICATION: NOT REQUIRED
 4. "XX" REFERS TO THE NUMBER OF CIRCUITS
 5. ROHS COMPLIANT

| ITEM | QTY. | DESCRIPTION | MATERIAL | FINISH |
|------|------|---------------------------------|-----------------|--------------------|
| 4 | XX | #8-32 SCREW (OPT -A) | BRASS | NICKEL PLATE |
| 3 | XX | #8-32 SCREW W/WASH (OPT -A,-50) | STEEL | ZN, CLEAR CHROMATE |
| 2 | XX | TERMINAL, PC 8-32 | BRASS | TIN PLATE |
| 1 | 1 | INSULATOR, SR, NO MTG | POLYESTER (PBT) | BLACK |

UPDATE TOLERANCE
 EC NO: WNA2010-0528
 DRAWN: JENC INAS 2010/03/10
 CHKDR: DEROSS 2006/03/27
 APPR: JMACNEIL 2010/03/17

QUALITY SYMBOLS
 ▽=0
 ▽=0

GENERAL TOLERANCES (UNLESS SPECIFIED)

| | mm | INCH |
|----------|--------|--------|
| 4 PLACES | ± --- | ± --- |
| 3 PLACES | ± --- | ± .005 |
| 2 PLACES | ± 0.13 | ± .01 |
| 1 PLACE | ± 0.3 | ± --- |

ANGULAR ± 2 °

DRAFT WHERE APPLICABLE MUST REMAIN WITHIN DIMENSIONS

DIMENSION STYLE
MM/IN

SCALE
2:1

DESIGN UNITS
INCH

THIRD ANGLE PROJECTION

DRAWN BY
 C. YORK

DATE
 2006/03/27

CHECKED BY
 R. DEROSS

DATE
 2006/03/27

APPROVED BY
 JMACNEIL

DATE
 2010/03/17

MATERIAL NO.
SEE CHART

TITLE
11.11 [.438] SR BTS ASY, PC TERMINAL, NO MTG, OVERSIZED SCREW, -A-C

MOLEX INCORPORATED

DOCUMENT NO.
SD-38731-005

SHEET NO.
1 OF 1

THIS DRAWING CONTAINS INFORMATION THAT IS PROPRIETARY TO MOLEX INCORPORATED AND SHOULD NOT BE USED WITHOUT WRITTEN PERMISSION