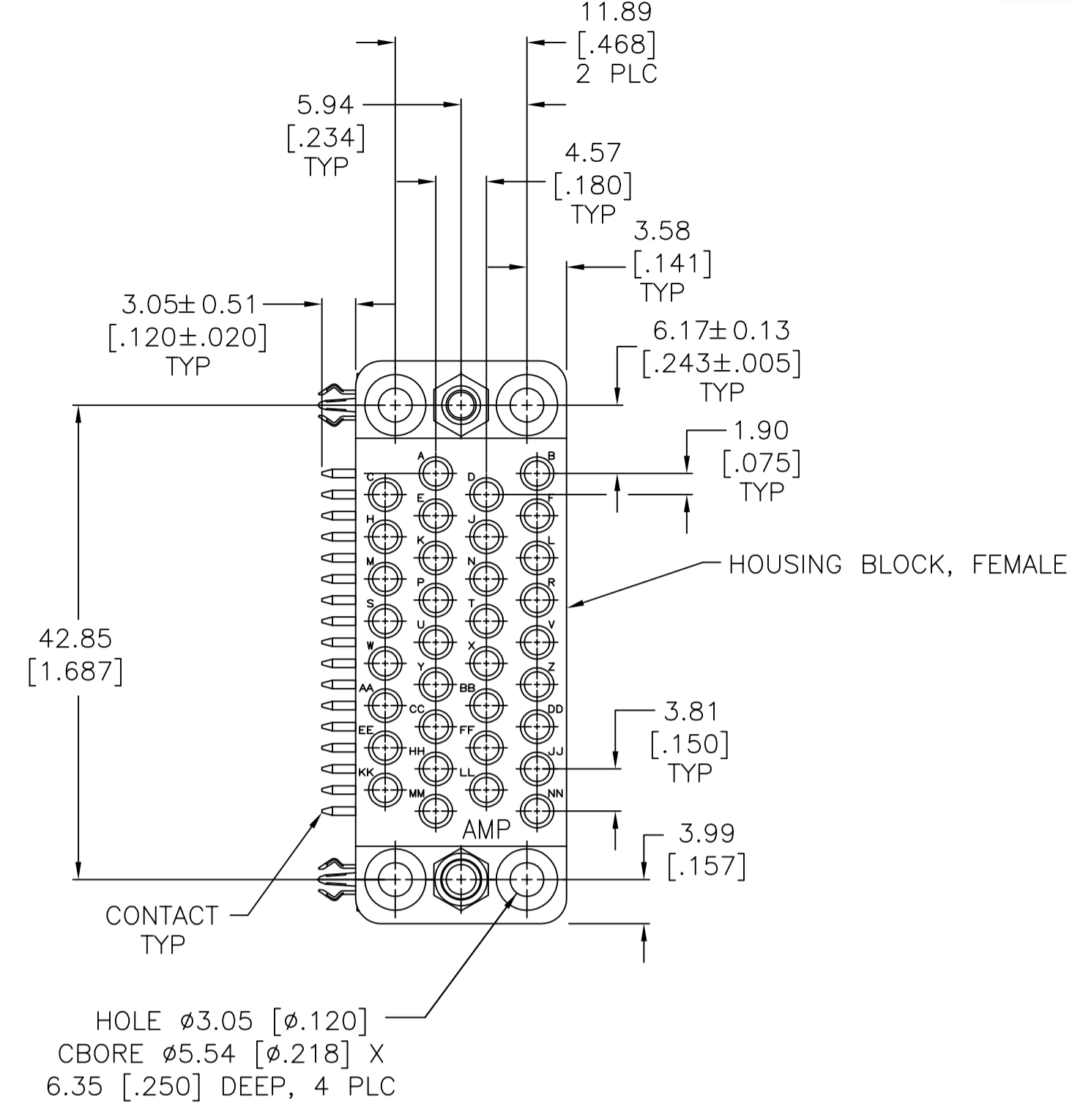
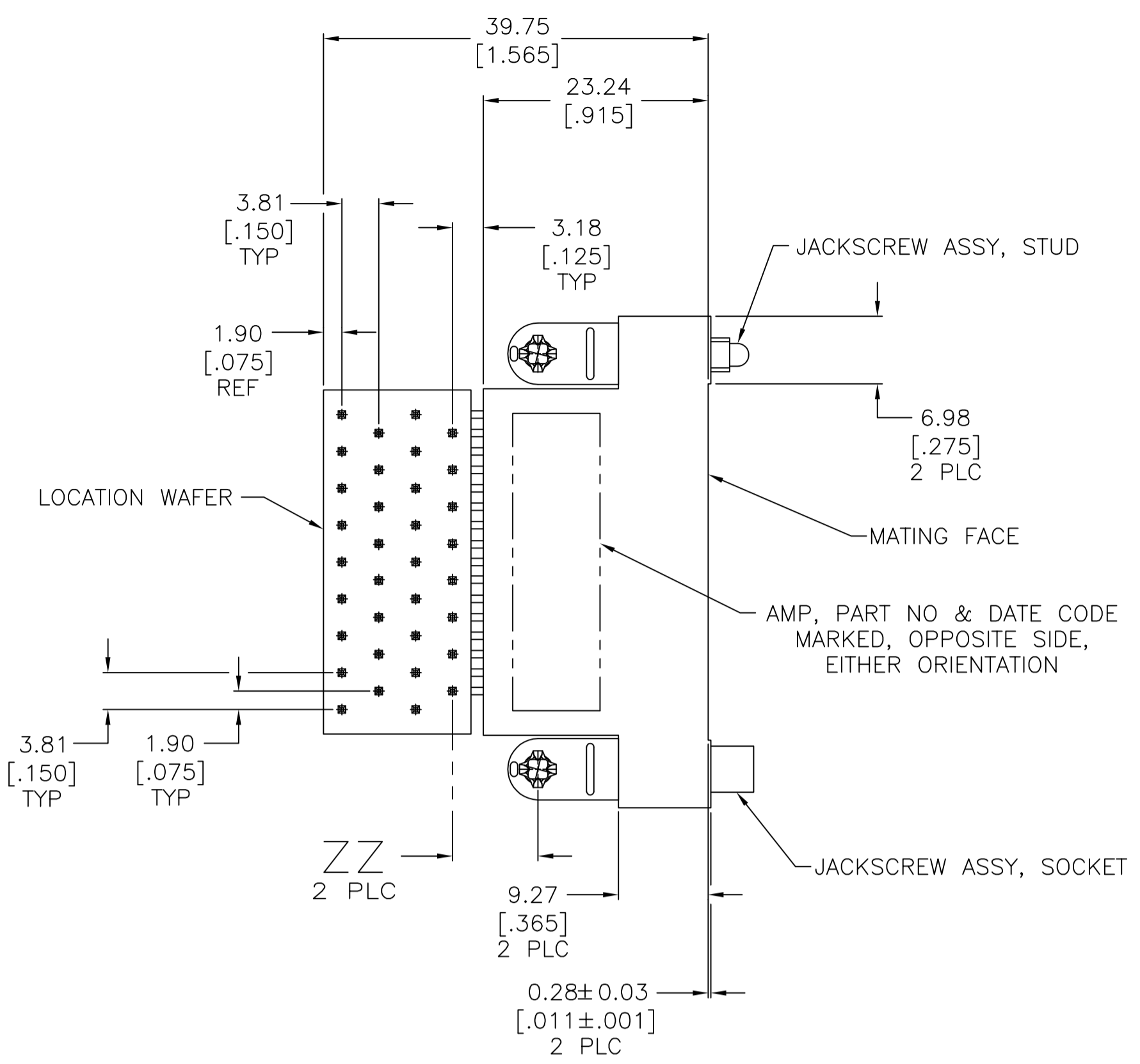
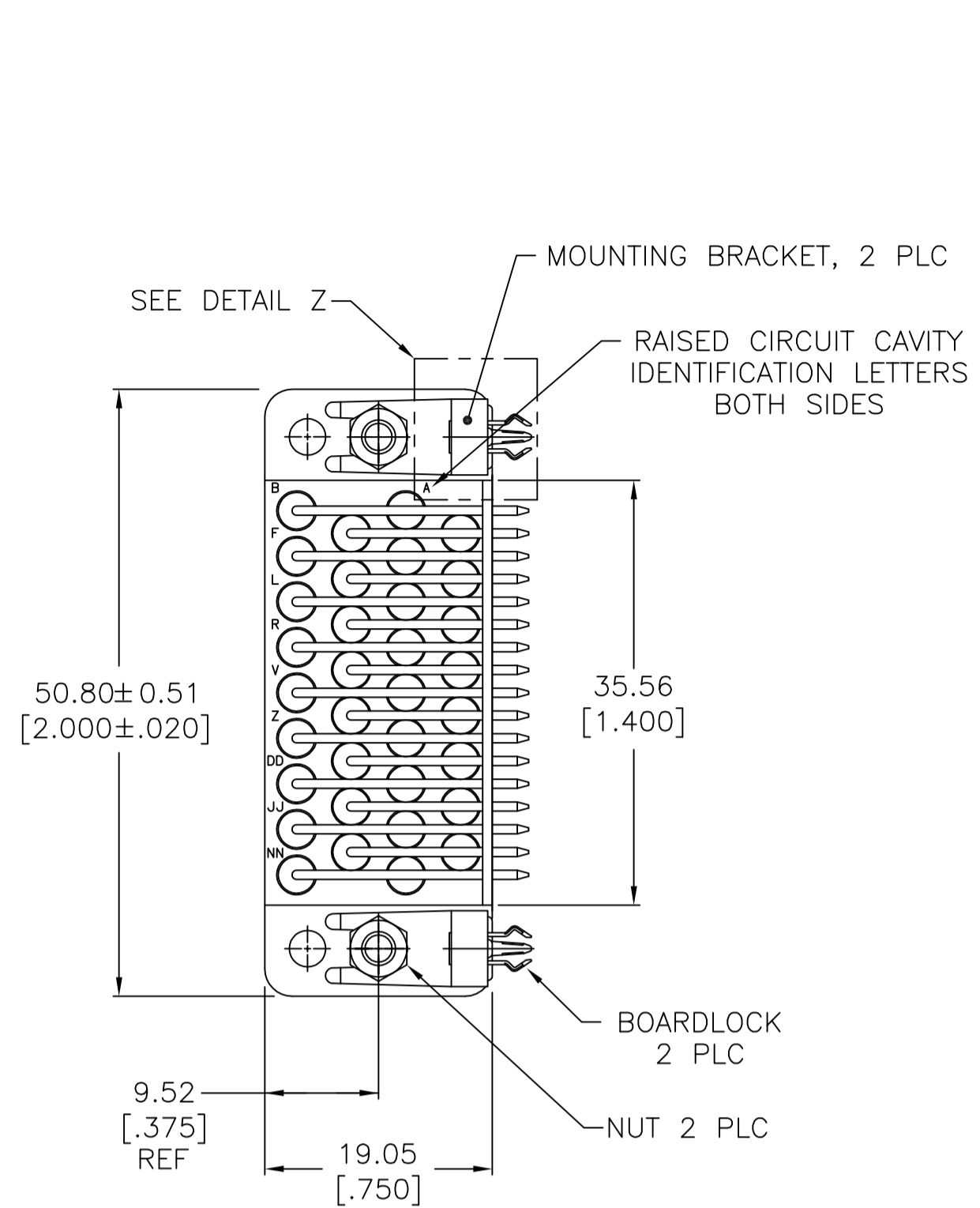
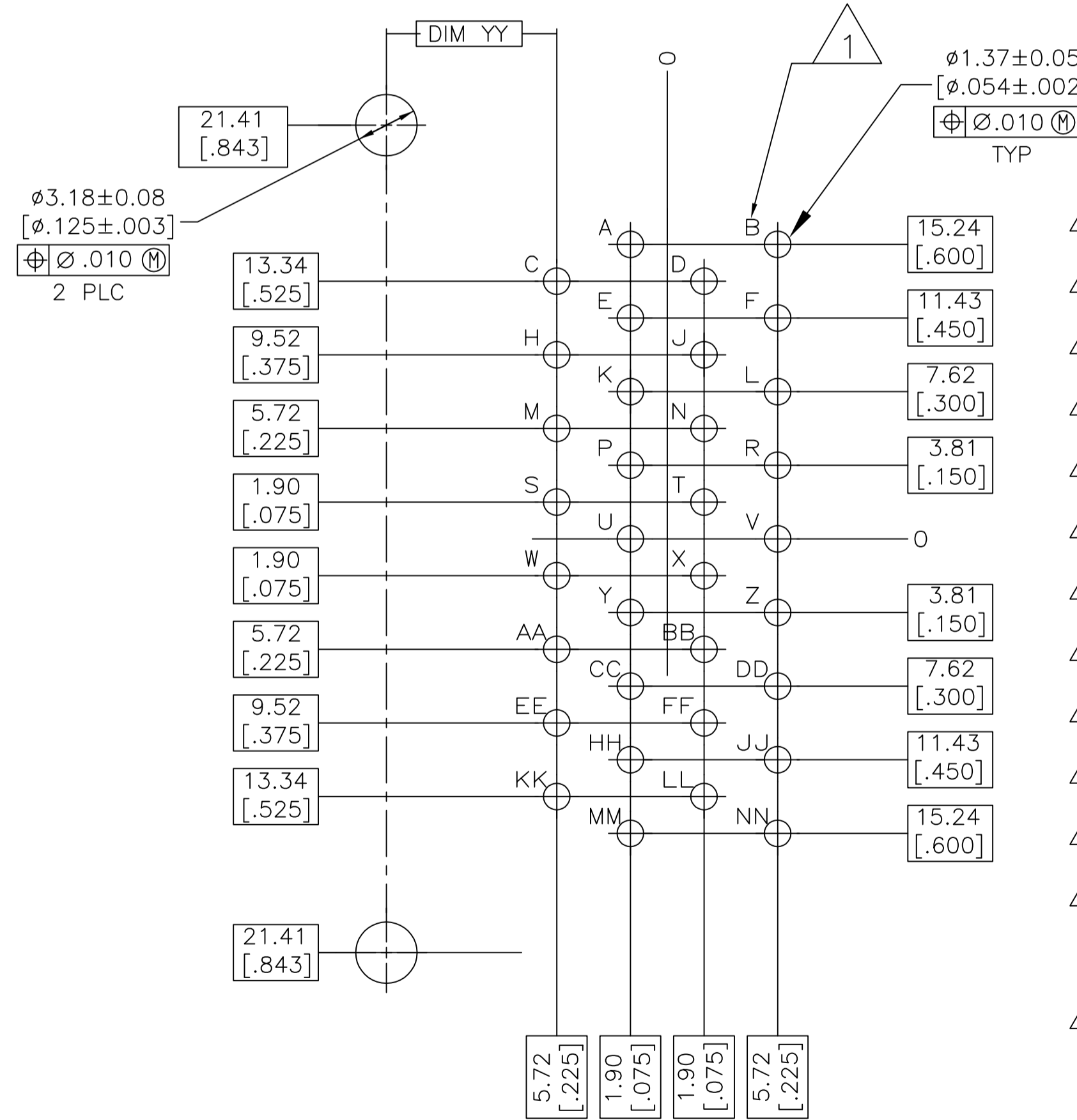


REVISIONS					
P	LTR	DESCRIPTION	DATE	DWN	APVD
V2		REVISED PER ECO-13-008672	02SEP2013	KH	DR
W		REVISED PER ECO-17-011042	01AUG2017	RS	MZ



- 1 LETTERS ARE SHOWN ON PC BOARD LAYOUT FOR HOLE LOCATION PURPOSES ONLY.
- 2 MINERAL REINFORCED, FLAME RETARDANT PHENOLIC, BLACK.
- 3 JACKSCREW BODY: STAINLESS STEEL PER ASTM-A-582; LOCKWASHER: STAINLESS STEEL PER QQ-S-766; NUT: CARBON STEEL PER QQ-S-637; MOUNTING BRACKET: ZINC PER QQ-Z-363; BOARDLOCK: COPPER ALLOY PER ASTM-B-592.
- 4 PHENOLIC RESIN LAMINATE, BLACK.
- 5 BODY: BRASS PER MIL-C-50; SPRING: STAINLESS STEEL PER QQ-S-766; POST: BRASS PER ASTM-B-134.
- 6 NUT: ZINC PER ASTM-B-633; MOUNTING BRACKET: 3.81µm [.000150] MIN NICKEL PER QQ-N-290. OVER 2.54µm [.000100] MIN COPPER PER MIL-C-14550 PER MIL-C-14550; BOARDLOCK: 5.08µm [.000200] MIN TIN-LEAD PER MIL-T-10727 OVER 1.27µm [.000050] MIN NICKEL PER QQ-N-290, LOCKWASHER: PASSIVATED.
- 7 BODY: 0.76µm [.000030] MIN GOLD PER MIL-G-45204 FOR A LENGTH OF 5.08 [.200] MIN FROM MATING END OF CONTACT, 2.54µm [.000100] MIN TIN-LEAD PER MIL-T-10727 IN WIRE BARREL AREA, BOTH OVER 1.27µm [.000050] MIN NICKEL PER QQ-N-290 ON ENTIRE CONTACT; POST: 2.54µm [.000100] MIN TIN-LEAD PER MIL-T-10727 OVER 1.27µm [.000050] MIN NICKEL PER QQ-N-290.
- 8 SELECT LOADED CIRCUITS ARE B,C,D,E,F,H,L,N,P,R,S,T,U,V,W,X,Y,AA,HH,KK AND NN.
- 9 SELECT LOADED CIRCUITS ARE A,B,C,D,E,F,H,J,L,M,N,P,R,S,T,U,V,W,X,Y,AA AND NN.
- 10 SELECT LOAD CIRCUITS A,B,C,D,E,F,H,P,R,S,T,U,R,S,T,U,V,W,X,Y,AA,BB, AND NN.
- 11 SELECT LOAD CIRCUITS A,B,C,D,E,F,H,J,K,L,N,P,R,S,T,U,V,W,X,Y,AA,BB, AND NN.
- 12 SELECT LOAD CIRCUITS A,B,C,D,E,F,H,K,L,N,P,R,S,T,U,V,W,X,Y,AA,BB, AND NN.
- 13 SELECT LOAD CIRCUITS A,B,C,D,E,F,H,J,L,N,P,R,S,T,U,V,W,X,Y,AA,HH, AND NN.
- 14 BULK PACKED KIT.
- 15 BODY: 0.76µm [.000030] MIN GOLD PER MIL-G-45204 FOR A LENGTH OF 5.08 [.200] MIN FROM MATING END OF CONTACT, 2.54µm [.000100] MIN TIN PER MIL-T-10727 IN WIRE BARREL AREA, BOTH OVER 1.27µm [.000050] MIN NICKEL PER QQ-N-290 ON ENTIRE CONTACT; POST: 2.54µm [.000100] MIN TIN PER MIL-T-10727 OVER 1.27µm [.000050] MIN NICKEL PER QQ-N-290.
- 16 NUT: ZINC PER ASTM-B-633; MOUNTING BRACKET: 3.81µm [.000150] MIN NICKEL PER QQ-N-290. OVER 2.54µm [.000100] MIN COPPER PER MIL-C-14550 PER MIL-C-14550; BOARDLOCK: 5.08µm [.000200] MIN TIN PER MIL-T-10727 OVER 1.27µm [.000050] MIN NICKEL PER QQ-N-290, LOCKWASHER: PASSIVATED.
- 17 OBSOLETE PARTS: OBSOLETE CIS STREAMLINING PER D.RENAUD/D.SINISI



RECOMMENDED PC BOARD LAYOUT  
SCALE 4:1  
1.57 [.062] PC BOARD THICKNESS

REV	DESCRIPTION	DATE	DWN	APVD	CIRCUIT CAVITIES LOADED	PART NUMBER	
17	OBSOLETE	13/16	8.81 [.347]	8.81 [.347]	NO	FULLY LOADED	1-213574-7
17	OBSOLETE	13/16	8.81 [.347]	8.81 [.347]	NO	FULLY LOADED	1-213574-6
17	OBSOLETE	13/16	8.81 [.347]	8.81 [.347]	YES	FULLY LOADED	1-213574-5
17	OBSOLETE	13/16	8.81 [.347]	8.81 [.347]	YES	FULLY LOADED	1-213574-4
17	OBSOLETE	13/16	8.81 [.347]	8.81 [.347]	YES	FULLY LOADED	1-213574-3
17	OBSOLETE	13/16	8.81 [.347]	8.81 [.347]	YES	FULLY LOADED	1-213574-2
17	OBSOLETE	13/16	8.81 [.347]	8.81 [.347]	YES	FULLY LOADED	1-213574-1
14	OBSOLETE	7/6	8.81 [.347]	8.81 [.347]	NO	FULLY LOADED	1-213574-0
17	OBSOLETE	7/6	8.81 [.347]	8.81 [.347]	NO	FULLY LOADED	213574-9
17	OBSOLETE	7/6	8.38 [.330]	8.38 [.330]	YES	FULLY LOADED	213574-8
17	OBSOLETE	7/6	8.81 [.347]	8.81 [.347]	YES	FULLY LOADED	213574-7
17	OBSOLETE	7/6	8.81 [.347]	8.81 [.347]	YES	FULLY LOADED	213574-6
17	OBSOLETE	-	8.81 [.347]	8.81 [.347]	NO	FULLY LOADED	213574-5
17	OBSOLETE	7/6	8.81 [.347]	8.81 [.347]	YES	FULLY LOADED	213574-4
17	OBSOLETE	-	8.81 [.347]	8.81 [.347]	YES	FULLY LOADED	213574-3
17	OBSOLETE	7/6	8.81 [.347]	8.81 [.347]	YES	FULLY LOADED	213574-2
17	OBSOLETE	-	8.81 [.347]	8.81 [.347]	YES	FULLY LOADED	213574-1

THIS DRAWING IS A CONTROLLED DOCUMENT.		DIN C RICHARD 11/27/89	TE Connectivity	
DIMENSIONS: mm [INCHES]		TOLERANCES UNLESS OTHERWISE SPECIFIED:	APVD R. STONE 12-4-89	
0 PLC ± -	1 PLC ± -	2 PLC ± -	3 PLC ± 0.25 [.010]	4 PLC ± -
MATERIAL: HOUSING: Δ HARDWARE: Δ CONTACT: Δ LOCATION WAFER: Δ		FINISH: Δ	PRODUCT SPEC: Δ APPLICATION SPEC: Δ WEIGHT: Δ	
CUSTOMER DRAWING		SCALE 2:1	SHEET 1 of 1	REV W