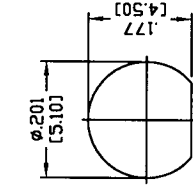


THIS DRAWING CONTAINS INFORMATION PROPRIETARY TO RF INDUSTRIES.
 ANY UNAUTHORIZED USE OF THIS DRAWING IS EXPRESSLY PROHIBITED
 WITHOUT WRITTEN PERMISSION FROM RF INDUSTRIES.
 ANY VIOLATION IS PUNISHABLE UNDER U.S. COPYRIGHT LAWS.

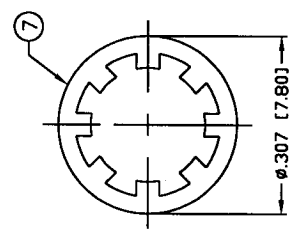
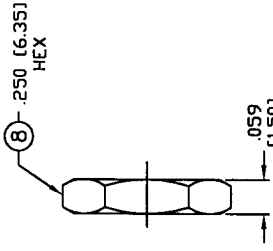
ALL DIMENSIONS ARE REFERENCE ONLY

RSB-4252-1B

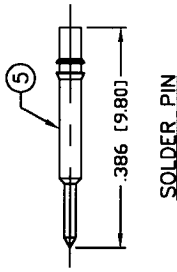
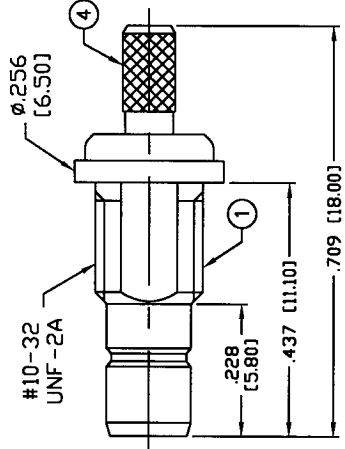
PART NO.		DESCRIPTION		DWN	DATE	APPROVED
REV	ENGINEERING RELEASE	CZS	3/3/03			JDMc



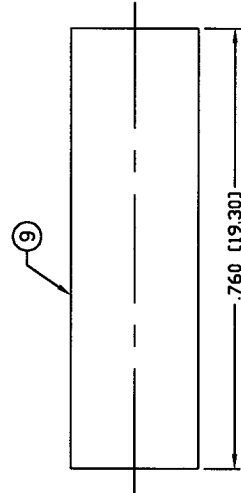
RECOMMENDED MOUNTING HOLE



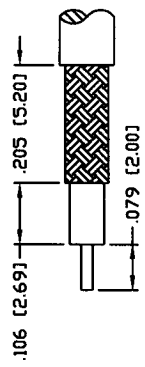
RECOMMENDED CRIMP DIE .130"



SOLDER PIN



RECOMMENDED STRIPPING DIMENSIONS



SPECIFICATIONS:

IMPEDANCE: 50 Ohms
 FREQUENCY RANGE: 0-4 GHz
 WORKING VOLTAGE: 335 V rms Max. @ Sea Level
 VSWR MAX: 1.15
 INSERTION LOSS(dB): $0.03 \times \sqrt{f(\text{GHz})}$
 CONTACT RESISTANCE: $\leq 6 \text{ m Ohm}$
 INSULATION RESISTANCE: 1k M Ohms min.
 TEMPERATURE RANGE: -65°C TO 165°C
 FOR RG-174, 188, 188A, 316/U, ALPHA 9174, 9316,
 BELDEN 8216, 83269, 83284, 84316 & TIMES LMR-100A CABLE

#	DESCRIPTION	QTY	MATERIAL	FINISH
1	BODY	1	BRASS	GOLD, 3μ
2	INSULATOR	1	PTFE	---
3	INSULATOR	1	PTFE	---
4	FERRULE STUD	1	BRASS	GOLD, 3μ
5	PIN	1	BRASS	GOLD, 30μ
6	FERRULE	1	COPPER	GOLD, 3μ
7	LOCK WASHER	1	BRASS	GOLD, 3μ
8	HEX NUT	1	BRASS	GOLD, 3μ
9	TUBING	1	HEAT SHRINK	---

UNLESS OTHERWISE SPECIFIED:
 1. REMOVE ALL BURRS
 2. BREAK ALL CORNERS & EDGES .005 R. MAX.
 3. CHAMFER 1ST & LAST THREADS 45°
 4. SURFACE ROUGHNESS 63 FINISH MIL-STD-10
 5. DIAMETERS ON COMMON CENTERS TO BE CONCENTRIC WITHIN .002 T.I.R.
 6. ALL DIMENSIONS ARE AFTER PLATING.

DIMENSIONS ARE IN INCHES AND [MILLIMETERS] UNLESS OTHERWISE NOTED TOLERANCES ARE:
 DECIMALS .xxx±.003 [.08]
 .xxx±.001 [.03]
 .xx±.003 [.13]

7610 MIRAMAR RD
 SAN DIEGO, CA 92126
 (858) 549-6340
 (858) 549-6345 FAX

RF connectors
 DIVISION OF RF INDUSTRIES, LTD.

SMB JACK, CRIMP

BULKHEAD

SIZE	CABLE GROUP	DWG NO.	REV
A	B	RSB-4252-1B	--

SCALE: NTS CAD FILE OUTLINE SHEET 1 OF 1

DRAWN	C. ZUNIGA	3/3/03
CHECKED	DM 3-403	
ORJ DRAWN	C. ZUNIGA	3/3/03
APPROVALS		DATE

008974