

PANDUIT[®]

infrastructure for a connected world

smartzone™ G5

Intelligent PDUs

Best in Class Outlet Density

Optimal Form Factors

Superior Reliability

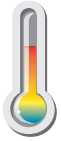


SmartZone™ G5 iPDU Value Proposition



Quality & Reliability

- 3-Year standard and 5-Year extended warranty



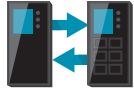
High Temp

- Built with high-temperature grade premium components to withstand 60°C high temperature at full load for an extended period to provide high quality and reliability



High Power Density

- Unique outlets design for high power density, and compact form-factors minimizing cabinet space



Hot-Swappable and Upgradable

- Hot-Swappable Controller with large OLED display and high contrast ratio



Hardened Security

- Enhanced security with (SNMPv3 and RESTful/TLS) with certificate-based advanced asymmetric encryption, validated and hardened with multiple security scanning tools



1G Redundant Network Access

- High Networking speed (1G) and with Redundant Network Access (RNA) for connectivity redundancy or for allowing separate Colo/Tenant Network connectivity



Real-Time Monitor

- Real-time Monitoring of Power Environmental and Physical Access Security



Environmental Plug & Play Sensors

- Variety of Plug-n-Play Environment and Access Security accessories through U-Ports



Multi-Device WebGUI

- Enhanced User-Experience with/BYOD WebGUI and colored PDU, cords and cable ties



Multi-Color

- A variety of colored PDU chassis, power cords and cable ties

SmartZone™ G5 iPDU Families

Monitored Input (MI) Series

Rack PDUs that have the ability for aggregate power monitoring to quickly identify potential power issues, and reclaim available or under-utilized power capacity.

Monitored Switched (MS) Series

Rack PDUs that have the ability for aggregate power monitoring and outlet level switching capabilities for individual outlets or a group of outlets. Enabling power sequencing, rebooting equipment or restrict unauthorized use of individual outlets.

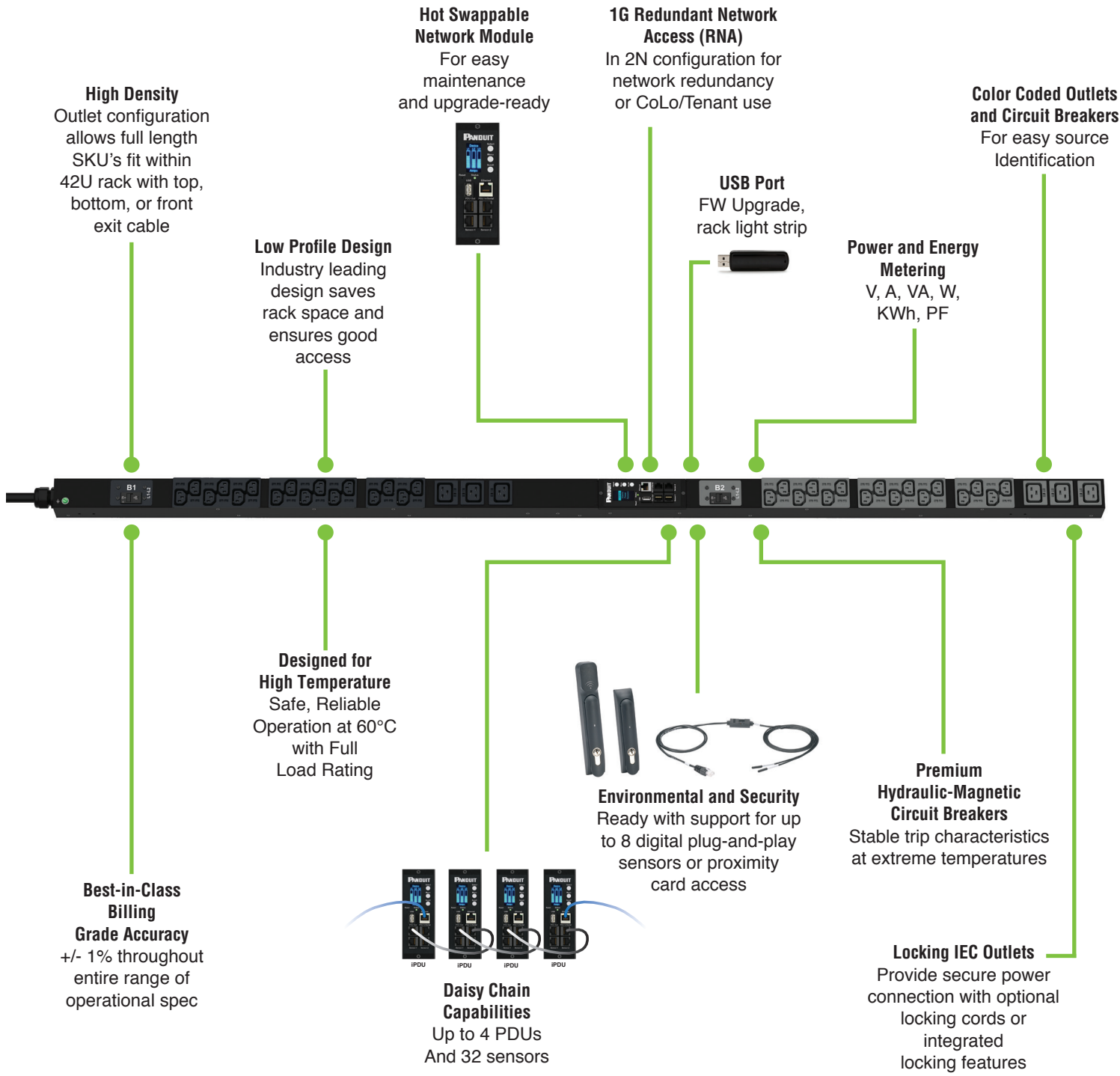
Monitored per Outlet (MPO) Series

Rack PDUs that have the ability for outlet level power monitoring to quickly identify potential power issues, and reclaim available or under-utilized power capacity at the outlet level enabling the redeployment or decommissioning of individual servers to reclaim available or under-utilized power capacity.

Monitored and Switched per Outlet (MSPO) Series

Rack PDUs that have the ability for outlet level power monitoring and outlet level switching capabilities for individual outlets or a group of outlets. Power monitoring at the individual outlet level provides actionable management data on the power consumption of each connected IT device enabling the redeployment or decommissioning of individual servers to reclaim available or under-utilized power capacity.

iPDU Key Features



High Density
Outlet configuration allows full length SKU's fit within 42U rack with top, bottom, or front exit cable

Low Profile Design
Industry leading design saves rack space and ensures good access

Hot Swappable Network Module
For easy maintenance and upgrade-ready

1G Redundant Network Access (RNA)
In 2N configuration for network redundancy or CoLo/Tenant use

USB Port
FW Upgrade, rack light strip

Power and Energy Metering
V, A, VA, W, KWh, PF

Color Coded Outlets and Circuit Breakers
For easy source Identification

Best-in-Class Billing Grade Accuracy
+/- 1% throughout entire range of operational spec

Designed for High Temperature
Safe, Reliable Operation at 60°C with Full Load Rating

Environmental and Security
Ready with support for up to 8 digital plug-and-play sensors or proximity card access

Premium Hydraulic-Magnetic Circuit Breakers
Stable trip characteristics at extreme temperatures

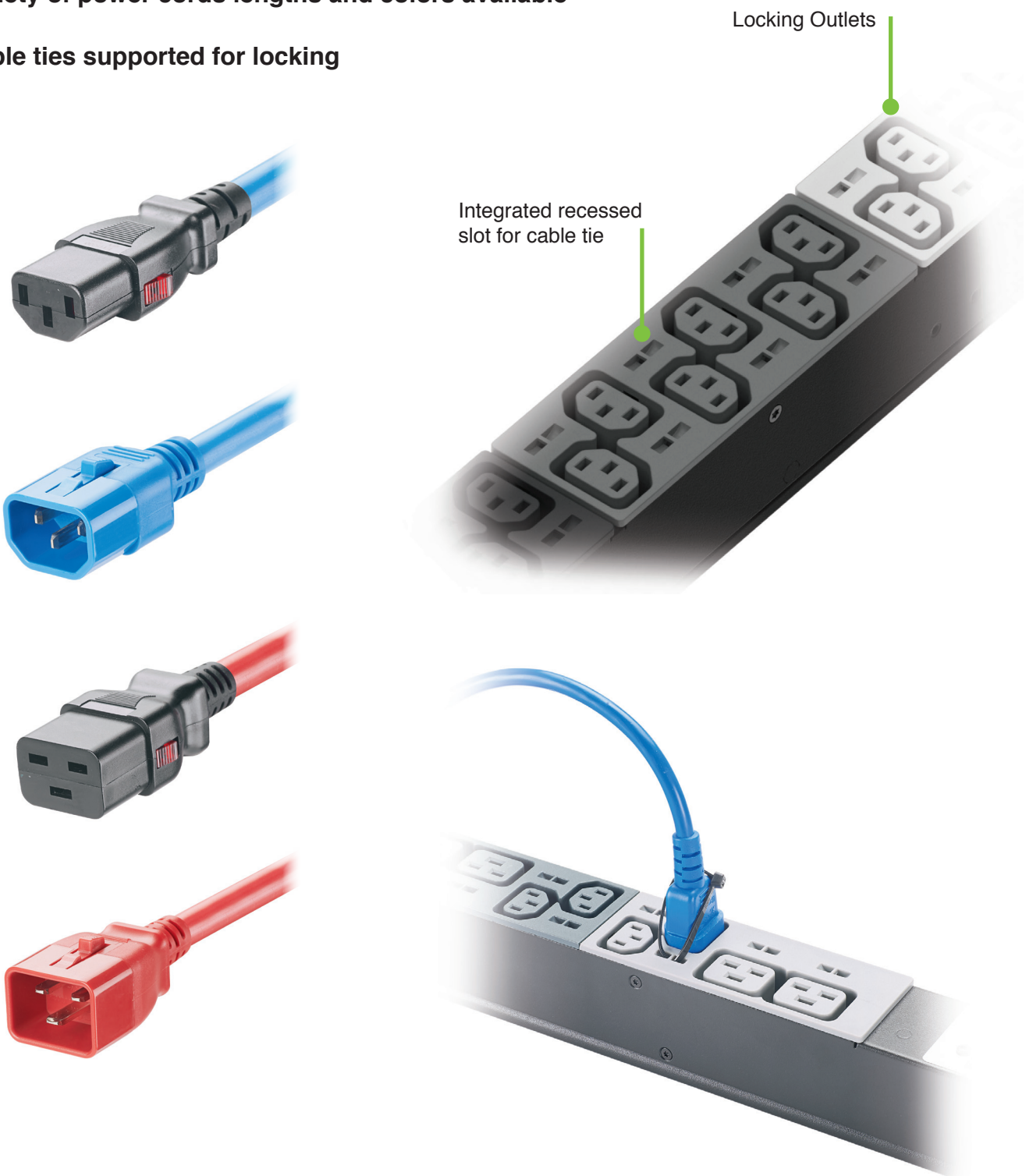
Daisy Chain Capabilities
Up to 4 PDUs
And 32 sensors

Locking IEC Outlets
Provide secure power connection with optional locking cords or integrated locking features

Product Features	Monitored Input (MI)	Monitored Switched (MS)	Monitored per Outlet (MPO)	Monitored & Switched per Outlet (MSPO)
Design Features <ul style="list-style-type: none"> • Low profile, space saving design • Ultra low profile circuit breakers on most models • Adjustable tool-less mounting system • Color-coded receptacles • Locking IEC receptacles and locking power cord compatible • Field rewirable input cord for front or top mounting 	•	•	•	•
PDU Energy Metering and Monitoring <ul style="list-style-type: none"> • PDU level watt-hour energy metering (kWh) • PDU level power measurements (W) • Input Phase level power measurements (V, A, VA, kWh, pf) • Circuit breaker level current measurements • High-accuracy, billing-grade metering capabilities • Embedded memory log to record/view/report historical data • User customizable alarm thresholds & notifications 	•	•	•	•
Outlet Level Switching <ul style="list-style-type: none"> • Remote On/Off power control by individual outlet • User-defined power-on time delay to sequence IT equipment • Automatic sequencing to avoid inrush current overload • Outlet level user security with assignable roles and user access 		•		•
Outlet Level Energy Metering <ul style="list-style-type: none"> • Outlet level watt-hour energy metering (kWh) • Outlet level power measurements (V,A,VA, W, pf) • Outlet level information for Green Grid Level 3 PUE Calculations 			•	•
Environmental & Security Management <ul style="list-style-type: none"> • Optional Plug & Play environmental sensors including temperature, humidity, dry contact and water leak • User customizable alarm thresholds and notifications 	•	•	•	•
Physical Security Management <ul style="list-style-type: none"> • Rack access monitoring with door contact switch • User customizable alarm thresholds and notifications • Dry Contact accessory to activate strobe, beacon, or fan 	•	•	•	•
Network Management and Local Display Interface <ul style="list-style-type: none"> • Largest-in-class, high-visibility, OLED display • Full featured network management and alerting capabilities supporting HTTP, HTTPS, SSH, Telnet, SNMP, FTP and email • Strong encryption, passwords, and advanced authorization options including local permissions, LDAP/S, and Active Directory • Daisy Chain up to 4 Rack PDUs and 32 environmental sensors through a single IP address 	•	•	•	•
Circuit Breaker Status Monitoring <ul style="list-style-type: none"> • Active monitoring and alarming of circuit breaker on/off status 	•	•	•	•

Locking Outlets and Cables

- Locking outlets compatible to V and W power cords
- W power cords provide locking at both end (PDU and equipment)
- Variety of power cords lengths and colors available
- Cable ties supported for locking



G5 Intelligent Network Controller (iNC) (Hot Swappable)

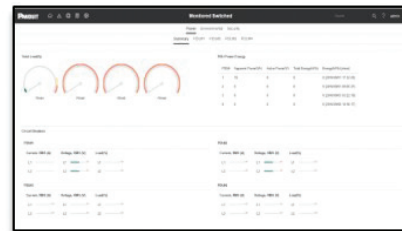


iPDU

Web GUI

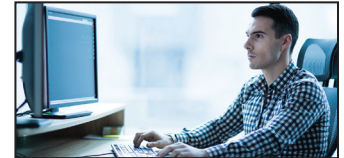


Login



Dashboard

Multi-Device Access



Desktop

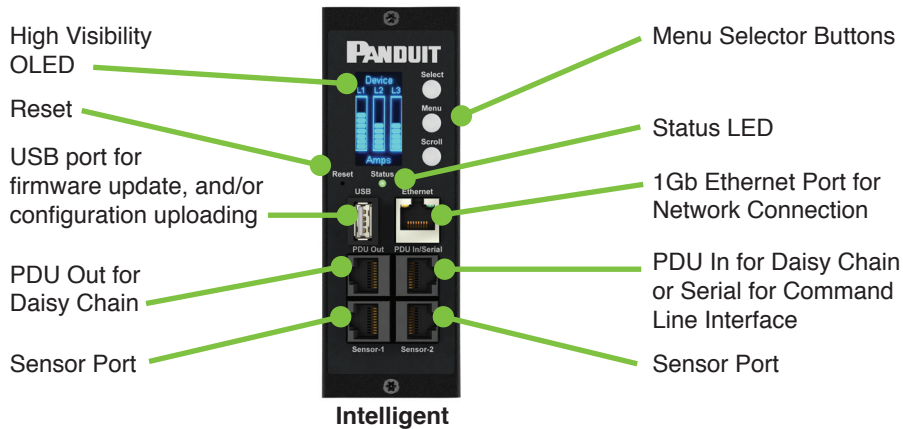


Tablet



Smartphone

iPDU

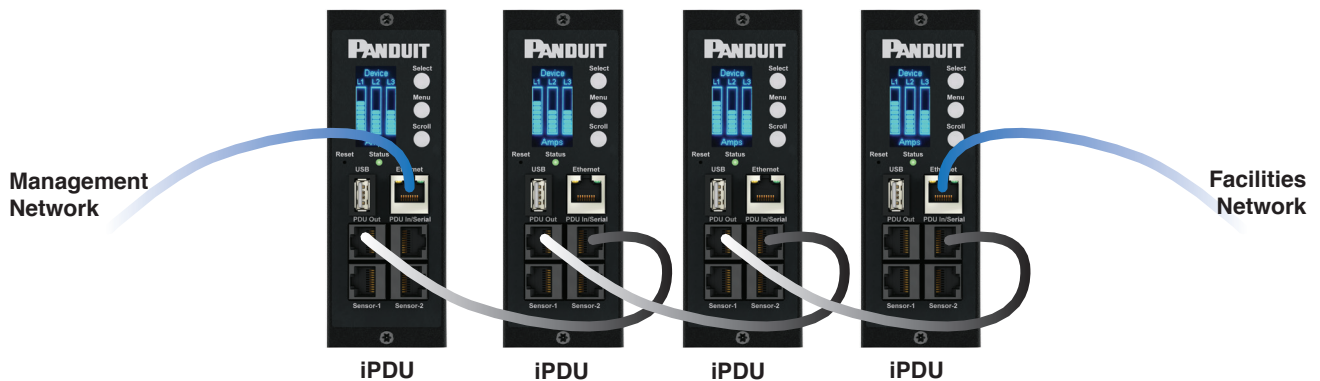


Intelligent

Daisy Chain & Redundant Network Access*

Allows two separate secure network connections to Daisy Chained PDU's

- Facilities Network for monitoring power usage and tracking data
- Manage and monitor up to 4 rack PDU's, using only a single IP address



*RNA available using two iPDU configuration only

Accessories – Environmental, Security and Power Cords

Plug and play style digital sensors (self-identifying electronics design)

Environmental

- Temperature



- Temp + Humidity



- 3Temp + Humidity

- Rope Leak



- Spot Leak



- 3 Sensor Input Hub



- Dry Contact Input

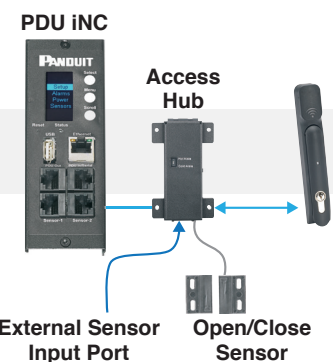


Security

- Door Contact Switch



- Access hub for smart handle



- Auto Light Bar



Power Cords

- Locking Power Cords (W-Lock and V-Lock Compatible)



The background of the advertisement features a blue gradient with light rays emanating from the top left. In the bottom left corner, there is a network diagram consisting of glowing blue nodes connected by thin lines. On the right side, a portion of a grey PDU (Power Distribution Unit) is visible, showing several electrical outlets.

Smartzone™ G5 Intelligent PDUs

PANDUIT®

Panduit Corp.
World Headquarters
Tinley Park, IL 60487

800.777.3300

www.panduit.com