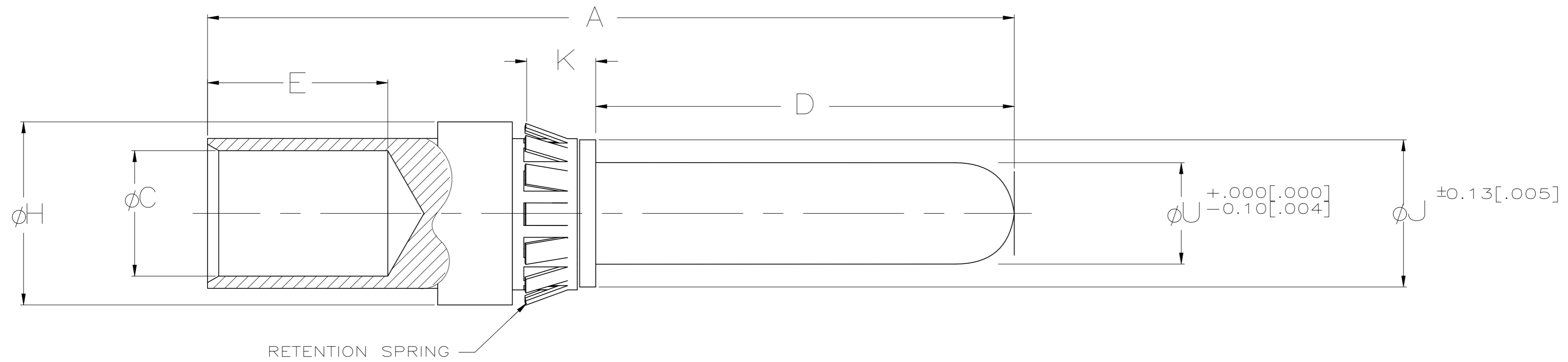


REVISIONS					
P	LTR	DESCRIPTION	DATE	DWN	APVD
F		REVISED PER ECR-22-143965	05/16/23	OL	WY



④	①	②	4	5.08	6.65	7.62	9.1	19.1	4.60	38.9	8	4 mm	193837-8
			[.157]	[.20]	[.262]	[.300]	[.36]	[.75]	[.181]	[1.53]			
④	①	②	8	5.08	13.51	14.48	17.5	33	12.37	66.8	1/0	8 mm	193837-7
			[.315]	[.20]	[.532]	[.570]	[.69]	[1.30]	[.487]	[2.63]			
④	①	②	8	5.08	13.51	14.48	14.2	33	9.91	63.5	2	8 mm	193837-6
			[.315]	[.20]	[.532]	[.570]	[.56]	[1.30]	[.390]	[2.50]			
④	①	②	6	5.08	9.45	10.41	11.7	19.3	7.36	43.9	4	6 mm	193837-5
			[.236]	[.20]	[.372]	[.410]	[.46]	[.76]	[.290]	[1.73]			
④	①	②	6	5.08	9.45	10.41	9.4	19.3	5.97	41.7	6	6 mm	193837-4
			[.236]	[.20]	[.372]	[.410]	[.37]	[.76]	[.235]	[1.64]			
④	①	②	4	5.08	6.65	7.62	9.1	19.1	4.60	38.9	8	4 mm	193837-3
			[.157]	[.20]	[.262]	[.300]	[.36]	[.75]	[.181]	[1.53]			
④	①	②	4	5.08	6.65	7.62	9.1	19.1	3.68	38.9	10	4 mm	193837-2
			[.157]	[.20]	[.262]	[.300]	[.36]	[.75]	[.145]	[1.53]			
④	①	②	2	5.08	4.75	5.72	9.1	16.3	2.54	35.6	12/14	2 mm	193837-1
			[.079]	[.20]	[.187]	[.225]	[.36]	[.64]	[.105]	[1.40]			
			ϕU	K	ϕJ	ϕH	E	D	ϕC	A	WIRE AWG	PIN SIZE	PART NO.

NOTES:

- ① LUBRICATED AT ASSY
- ② PRELIMINARY PART NO.
- ③ PIN FINISH: .200 μIN MIN. THICK SILVER OVER .500 μIN MIN THICK NICKEL
- ④ OBSOLETE PART NO.

THIS DRAWING IS A CONTROLLED DOCUMENT.		DWN	DAB	09-10-93		TE Connectivity						
DIMENSIONS: INCHES		CHK	JMT	09-10-93		ASSY,PIN,2-8mm,CRIMP						
TOLERANCES UNLESS OTHERWISE SPECIFIED:		APVD	-	-		-						
0 PLC ± - 1 PLC ± - 2 PLC ± 0.40 [.015] 3 PLC ± 0.25 [.010] 4 PLC ± - ANGLES ± - FINISH - ③		PRODUCT SPEC	-	-		-						
MATERIAL: PIN: COPPER ALLOY RETENTION SPRING: STAINLESS STEEL		APPLICATION SPEC	-	-	SIZE	A2	CAGE CODE	00779	DRAWING NO	C=193837	RESTRICTED TO	-
		WEIGHT	0.000000	SCALE	4:1	SHEET	1 OF 1	REV	F	CUSTOMER DRAWING		

CUSTOMER DRAWING