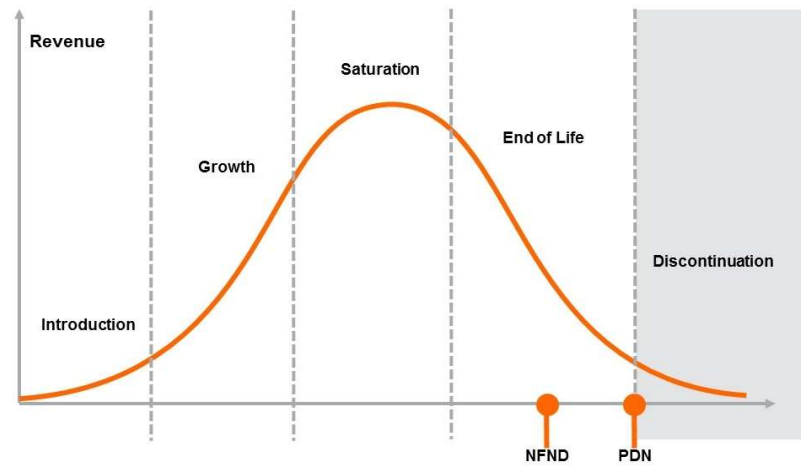


Light is OSRAM

Product Or Individual Q-Code Discontinuation (acc. JEDEC J-STD-048)  
OS-PDN-2019-075

2-Dec-2019

Last order: 15 January 2020  
Last delivery: 15 April 2020



Please direct your feedback to your local Sales office.

DISCONTINUED				NEW (REPLACEMENT)		
Device	Ordering Code	Brand	Reason for discontinuation	Device	Datasheet Ordering Code	Brand
GW CSSRM2.PM-N2N4-A535-1-700-R18	Q65112A0204	OSLON	Brightness increase – dim selections need to be phased-out	GW CSSRM3.PM-N6N8-A535-1-700-R18	Q65112A6140	OSLON
GW CSSRM2.PM-N3N5-A535-0-700-R33-XX	Q65112A0611	OSLON	Brightness increase – dim selections need to be phased-out	GW CSSRM3.PM-N6N8-A535-1-700-R18	Q65112A6140	OSLON
GW CSSRM2.PM-N2N4-A535-0-700-R33-XX	Q65112A0614	OSLON	Brightness increase – dim selections need to be phased-out	GW CSSRM3.PM-N6N8-A535-1-700-R18	Q65112A6140	OSLON
GW CSSRM2.EM-M7M9-A535-1-700-R18	Q65112A0807	OSLON	Brightness increase – dim selections need to be phased-out	GW CSSRM3.EM-N1N5-A535-1-700-R18	Q65112A9033	OSLON
GW CSSRM2.EM-M7M9-A636-1-700-R18	Q65112A0810	OSLON	Brightness increase – dim selections need to be phased-out	GW CSSRM3.EM-MFN3-A636-1-700-R18	Q65112A9028	OSLON
GW CSSRM2.EM-M8MF-A333-1-700-R18	Q65112A0814	OSLON	Brightness increase – dim selections need to be phased-out	GW CSSRM2.EM-N1N3-A333-1-700-R18	Q65112A7885	OSLON
GW CSSRM2.EM-M8MF-A535-1-700-R18	Q65112A0821	OSLON	Brightness increase – dim selections need to be phased-out	GW CSSRM2.EM-MFN2-A535-1-700-R18	Q65112A7853	OSLON
GW CSSRM2.CM-M1M3-A838-1-700-R18	Q65112A0828	OSLON	Brightness increase – dim selections need to be phased-out	GW CSSRM2.CM-M2M4-A838-1-700-R18	Q65112A0858	OSLON
GW CSSRM2.PM-N2N5-XX51-K2L2-700-R18-XX	Q65112A1331	OSLON	Brightness increase – dim selections need to be phased-out	GW CSSRM3.PM-N5N7-XX51-1-700-R18	Q65112A6252	OSLON
GW CSSRM2.PM-N3N5-A333-0-700-R33-XX	Q65112A1580	OSLON	Brightness increase – dim selections need to be phased-out	GW CSSRM3.PM-N6N8-A333-1-700-R18	Q65112A6142	OSLON
GW CSSRM2.PM-N2N5-XX53-K2L2-700-R18-XX	Q65112A1581	OSLON	Brightness increase – dim selections need to be phased-out	GW CSSRM3.PM-N6N8-XX53-1-700-R18	Q65112A6254	OSLON
GW CSSRM2.EM-M6M8-A737-0-700-R33-XX	Q65112A1619	OSLON	Brightness increase – dim selections need to be phased-out	GW CSSRM3.EM-M9N2-A737-1-700-R18	Q65112A9030	OSLON
GW CSSRM2.PM-N3N5-XX55-1-700-R18-XX	Q65112A2121	OSLON	Brightness increase – dim selections need to be phased-out	GW CSSRM3.PM-N6N8-XX55-1-700-R18	Q65112A6248	OSLON
GW CSSRM2.EM-M8MF-XX33-1-700-R18-XX	Q65112A2131	OSLON	Brightness increase – dim selections need to be phased-out	GW CSSRM3.EM-N2N6-XX53-1-700-R18	Q65112A9036	OSLON
GW CSSRM2.PM-N3N5-A131-1-700-R18-XX	Q65112A2319	OSLON	Brightness increase – dim selections need to be phased-out	GW CSSRM3.PM-N5N7-A131-1-700-R18	Q65112A6144	OSLON
GW CSSRM2.PM-N4N5-XX55-1-700-R18-XX	Q65112A2367	OSLON	Brightness increase – dim selections need to be phased-out	GW CSSRM3.PM-N6N8-XX55-1-700-R18	Q65112A6248	OSLON
GW CSSRM2.PM-N4N5-A535-1-700-R18-XX	Q65112A2368	OSLON	Brightness increase – dim selections need to be phased-out	GW CSSRM3.PM-N6N8-A535-1-700-R18	Q65112A6140	OSLON
GW CSSRM2.PM-N4N5-XX53-1-700-R18-XX	Q65112A2369	OSLON	Brightness increase – dim selections need to be phased-out	GW CSSRM3.PM-N6N8-XX53-1-700-R18	Q65112A6254	OSLON
GW CSSRM2.PM-N4N5-A333-1-700-R18-XX	Q65112A2370	OSLON	Brightness increase – dim selections need to be phased-out	GW CSSRM3.PM-N6N8-A333-1-700-R18	Q65112A6142	OSLON
GW CSSRM2.PM-N4N5-XX52-1-700-R18-XX	Q65112A2371	OSLON	Brightness increase – dim selections need to be phased-out	GW CSSRM3.PM-N6N8-XX52-1-700-R18	Q65112A6253	OSLON
GW CSSRM2.PM-N4N5-XX51-K2L2-R18-XX	Q65112A2372	OSLON	Brightness increase – dim selections need to be phased-out	GW CSSRM3.PM-N5N7-XX51-1-700-R18	Q65112A6252	OSLON
GW CSSRM2.PM-N4N5-A232-1-700-R18-XX	Q65112A2373	OSLON	Brightness increase – dim selections need to be phased-out	GW CSSRM3.PM-N6N8-A232-1-700-R18	Q65112A6143	OSLON
GW CSSRM2.PM-N4N5-A131-1-700-R18-XX	Q65112A2374	OSLON	Brightness increase – dim selections need to be phased-out	GW CSSRM3.PM-N5N7-A131-1-700-R18	Q65112A6144	OSLON

DISCONTINUED				NEW (REPLACEMENT)		
Device	Ordering Code	Brand	Reason for discontinuation	Device	Datasheet Ordering Code	Brand
GW CSSRM2.PM-N3N5-A535-1-700-R18-XX	Q65112A2376	OSLON	Brightness increase – dim selections need to be phased-out	GW CSSRM3.PM-N6N8-A535-1-700-R18	Q65112A6140	OSLON
GW CSSRM2.PM-N3N5-XX51-1-700-R18-XX	Q65112A2377	OSLON	Brightness increase – dim selections need to be phased-out	GW CSSRM3.PM-N5N7-XX51-1-700-R18	Q65112A6252	OSLON
GW CSSRM2.PM-N3N5-XX52-1-700-R18-Q-ORG	Q65112A2407	OSLON	Brightness increase – dim selections need to be phased-out	GW CSSRM3.PM-N6N8-XX52-1-700-R18	Q65112A6253	OSLON
GW CSSRM2.PM-N3N5-XX33-1-700-R18-XX	Q65112A2464	OSLON	Brightness increase – dim selections need to be phased-out	GW CSSRM3.PM-N6N8-XX53-1-700-R18	Q65112A6254	OSLON
GW CSSRM2.CM-M4M6-XX36-1-700-R18-LV	Q65112A2555	OSLON	Brightness increase – dim selections need to be phased-out	GW CSSRM2.CM-M4M6-XX56-1-700-R18	Q65112A0966	OSLON
GW CSSRM2.CM-M3M5-XX37-1-700-R18-LV	Q65112A2556	OSLON	Brightness increase – dim selections need to be phased-out	GW CSSRM2.CM-M3M5-XX57-1-700-R18	Q65112A0844	OSLON
GW CSSRM2.CM-M2M4-XX38-1-700-R18-LV	Q65112A2557	OSLON	Brightness increase – dim selections need to be phased-out	GW CSSRM2.CM-M2M4-XX58-1-700-R18	Q65112A0853	OSLON
GW CSSRM2.EM-M7M9-XX37-1-700-R18-XX	Q65112A2765	OSLON	Brightness increase – dim selections need to be phased-out	GW CSSRM3.EM-M9N2-XX57-1-700-R18	Q65112A9029	OSLON
GW CSSRM2.EM-M8MF-XX35-1-700-R18-XX	Q65112A2766	OSLON	Brightness increase – dim selections need to be phased-out	GW CSSRM3.EM-N2N6-XX53-1-700-R18	Q65112A9036	OSLON
GW CSSRM2.PM-NHN6-XX55-0-700-R33-FU	Q65112A2957	OSLON	Brightness increase – dim selections need to be phased-out	GW CSSRM3.PM-N6N8-XX55-1-700-R18	Q65112A6248	OSLON
GW CSSRM2.EM-M7M8-XX57-1-700-R18-DS	Q65112A3028	OSLON	Brightness increase – dim selections need to be phased-out	GW CSSRM2.EM-M8MF-XX57-1-700-R18-DS	Q65112A7987	OSLON
GW CSSRM2.PM-N2N3-XX57-1-700-R18-DS	Q65112A3029	OSLON	Brightness increase – dim selections need to be phased-out	GW CSSRM2.PM-N2N3-XX57-1-700-R18-DS	Q65112A7760	OSLON
GW CSSRM2.PM-NHN6-A535-1-700-R18-FU	Q65112A3198	OSLON	Brightness increase – dim selections need to be phased-out	GW CSSRM3.PM-N6N8-A535-1-700-R18	Q65112A6140	OSLON
GW CSSRM2.PM-NHN6-XX55-1-700-R18-FU	Q65112A3199	OSLON	Brightness increase – dim selections need to be phased-out	GW CSSRM3.PM-N6N8-XX55-1-700-R18	Q65112A6248	OSLON
GW CSSRM2.CM-M5M6-XX33-1-700-R18-XX	Q65112A3299	OSLON	Brightness increase – dim selections need to be phased-out	GW CSSRM2.CM-M5M7-XX53-1-700-R18	Q65112A1650	OSLON
GW CSSRM2.PM-N5N6-XX52-0-700-R33-SHR	Q65112A3526	OSLON	Brightness increase – dim selections need to be phased-out	GW CSSRM3.PM-N6N7-XX52-0-700-R33-SHR	Q65112A6083	OSLON
GW CSSRM2.PM-N5N6-XX55-0-700-R33-SHR-C	Q65112A3527	OSLON	Brightness increase – dim selections need to be phased-out	GW CSSRM3.PM-N6N7-XX55-0-700-R33-SHR-C	Q65112A6082	OSLON
GW CSSRM2.PM-N4N5-XX55-0-700-R33-TH	Q65112A3593	OSLON	Brightness increase – dim selections need to be phased-out	GW CSSRM2.PM-N5N7-XX55-0-700-R33-TH	Q65112A5480	OSLON
GW CSSRM2.PM-N4N5-XX52-0-700-R33-TH	Q65112A3597	OSLON	Brightness increase – dim selections need to be phased-out	GW CSSRM2.PM-NKN7-XX52-0-700-R33-TH	Q65112A5478	OSLON
GW CSSRM2.PM-N4N5-XX52-K2L1-700-R18-XX	Q65112A3610	OSLON	Brightness increase – dim selections need to be phased-out	GW CSSRM3.PM-N6N8-XX52-1-700-R18	Q65112A6253	OSLON
<del>GW CSSRM2.EM-M6M8-XX38-K2L2-700-R18-XX</del>	<del>Q65112A4029</del>	<del>OSLON</del>	<del>Brightness increase – dim selections need to be phased-out</del>	<del>GW CSSRM3.EM-M8N1-XX58-1-700-R18</del>	<del>Q65112A9031</del>	<del>OSLON</del>
GW CSSRM2.PM-N4N6-XX53-K2L2-700-R18-XX	Q65112A4038	OSLON	Brightness increase – dim selections need to be phased-out	GW CSSRM3.PM-N6N8-XX53-1-700-R18	Q65112A6254	OSLON
<del>GW CSSRM2.EM-M9N1-XX53-K2L2-700-R18-XX</del>	<del>Q65112A4138</del>	<del>OSLON</del>	<del>Brightness increase – dim selections need to be phased-out</del>	<del>GW CSSRM3.EM-N2N6-XX53-1-700-R18</del>	<del>Q65112A9036</del>	<del>OSLON</del>

DISCONTINUED				NEW (REPLACEMENT)		
Device	Ordering Code	Brand	Reason for discontinuation	Device	Datasheet Ordering Code	Brand
GW CSSRM2.EM-M7M9-XX35-K2M1-700-R18-XX	Q65112A4197	OSLON	Brightness increase – dim selections need to be phased-out	GW CSSRM3.EM-N1N5-XX55-1-700-R18	Q65112A9038	OSLON
GW CSSRM2.EM-M6M8-A838-1-700-R18	Q65112A4223	OSLON	Brightness increase – dim selections need to be phased-out	GW CSSRM3.EM-M8N1-A838-1-700-R18	Q65112A9032	OSLON
GW CSSRM2.PM-NHN5-XX52-0-700-R33-ASD	Q65112A4387	OSLON	Brightness increase – dim selections need to be phased-out	GW CSSRM3.PM-N6N8-XX55-1-700-R18	Q65112A6248	OSLON
GW CSSRM2.EM-M9N1-XX35-1-700-R18-XX	Q65112A4906	OSLON	Brightness increase – dim selections need to be phased-out	GW CSSRM3.EM-N1N5-XX55-1-700-R18	Q65112A9038	OSLON
GW CSSRM2.PM-N4N5-XX55-0-700-R33-XX	Q65112A5218	OSLON	Brightness increase – dim selections need to be phased-out	GW CSSRM3.PM-N6N8-XX55-1-700-R18	Q65112A6248	OSLON
GW CSSRM2.CM-M5M6-XX33-K2L2-700-R18-XX	Q65112A5262	OSLON	Brightness increase – dim selections need to be phased-out	GW CSSRM2.CM-M5M7-XX53-1-700-R18	Q65112A1650	OSLON
GW CSSRM2.PM-N5N7-XX55-1-700-R18-XX	Q65112A5284	OSLON	Brightness increase – dim selections need to be phased-out	GW CSSRM3.PM-N6N8-XX55-1-700-R18	Q65112A6248	OSLON
GW CSSRM2.PM-N3N6-A131-1-700-R18-XX	Q65112A5324	OSLON	Brightness increase – dim selections need to be phased-out	GW CSSRM3.PM-N5N7-A131-1-700-R18	Q65112A6144	OSLON
GW CSSRM2.PM-N4N6-75S7-1-700-R18-XX	Q65112A5519	OSLON	Brightness increase – dim selections need to be phased-out	GW CSSRM2.PM-N4N6-75S7-1-700-R18-XX	Q65112A5519	OSLON
GW CSSRM2.EM-M9MF-XX55-0-700-R33-ZT	Q65112A5561	OSLON	Brightness increase – dim selections need to be phased-out	GW CSSRM3.EM-N3N5-XX55-K2L1-700-R33-ZT	Q65112A8807	OSLON
GW CSSRM2.EM-M6M8-XX58-K2L1-R18-ZT	Q65112A5677	OSLON	Brightness increase – dim selections need to be phased-out	GW CSSRM3.EM-M8MF-XX58-K2L1-700-R33-ZT	Q65112A8843	OSLON
GW CSSRM2.EM-M8N1-XX55-1-700-R18-SDL	Q65112A5887	OSLON	Brightness increase – dim selections need to be phased-out	GW CSSRM3.EM-N1N5-XX55-1-700-R18	Q65112A9038	OSLON
GW CSSRM2.EM-M8MF-XX57-1-700-R18-SDL	Q65112A5888	OSLON	Brightness increase – dim selections need to be phased-out	GW CSSRM3.EM-M9N2-XX57-1-700-R18	Q65112A9029	OSLON
GW CSSRM2.EM-M9N1-XX53-0-700-R33-ZT	Q65112A5932	OSLON	Brightness increase – dim selections need to be phased-out	GW CSSRM3.EM-N3N5-XX53-K2L1-700-R33-ZT	Q65112A8806	OSLON
GW CSSRM2.EM-M7M9-XX57-0-700-R33-ZT	Q65112A5933	OSLON	Brightness increase – dim selections need to be phased-out	GW CSSRM3.EM-N2N4-XX57-K2L1-700-R33-ZT	Q65112A8743	OSLON
GW CSSRM2.EM-M7M9-XX37-0-700-R33-ZT	Q65112A5934	OSLON	Brightness increase – dim selections need to be phased-out	GW CSSRM3.EM-N2N4-XX37-K2L1-700-R33-ZT	Q65112A8809	OSLON
GW CSSRM2.EM-M8M9-XX37-1-700-R18-XX	Q65112A6154	OSLON	Brightness increase – dim selections need to be phased-out	GW CSSRM3.EM-M9N2-XX57-1-700-R18	Q65112A9029	OSLON
GW CSSRM2.PM-N5N7-XX55-0-700-R33-XX	Q65112A6155	OSLON	Brightness increase – dim selections need to be phased-out	GW CSSRM3.PM-N6N8-XX55-1-700-R18	Q65112A6248	OSLON
GW CSSRM2.PM-N2N4-XX57-0-700-R33-XX	Q65112A6156	OSLON	Brightness increase – dim selections need to be phased-out	GW CSSRM3.PM-N3N5-XX57-1-700-R18	Q65112A6250	OSLON
GW CSSRM2.EM-M6M8-XX38-0-700-R33-ZT	Q65112A6168	OSLON	Brightness increase – dim selections need to be phased-out	GW CSSRM3.EM-M8MF-XX38-K2L1-700-R33-ZT	Q65112A8910	OSLON
GW CSSRM2.PM-N3N5-XX57-1-700-R18-XX	Q65112A6500	OSLON	Brightness increase – dim selections need to be phased-out	GW CSSRM3.PM-N3N5-XX57-1-700-R18	Q65112A6250	OSLON
GW CSSRM2.PM-N2N3-B2G2-1-700-R18-M-IN	Q65112A7388	OSLON	Brightness increase – dim selections need to be phased-out	GW CSSRM2.PM-N2N4-B2G2-1-700-R18-M-IN	Q65112A0514	OSLON

# *Products Affected by Product Discontinuation Notification*

**Number:** OS-PDN-2019-075

**Name:** Discontinuation of dim bin selections

**Release Date:** 12/2/2019

**Last Order:** 1/15/2020

**Last Delivery:** 4/15/2020

## *DISCONTINUED*

## *NEW (REPLACEMENT)*

<i>Product</i>	<i>QNumber</i>	<i>QNumber Description</i>	<i>Part Number</i>	<i>Product</i>	<i>QNumber</i>	<i>QNumber Description</i>	<i>Part Number</i>
GW CSSRM	Q65112A0828	GW CSSRM2.CM-M1M3-A838-1-700-R18	GW CSSRM2.CM-M1M3-A838-1	GW CSSRM	Q65112A0858	GW CSSRM2.CM-M2M4-A838-1-700-R18	GW CSSRM2.CM-M2M4-A838-1
GW CSSRM	Q65112A2555	GW CSSRM2.CM-M4M6-XX36-1-700-R18-LV		GW CSSRM	Q65112A0966	GW CSSRM2.CM-M4M6-XX56-1-700-R18	GW CSSRM2.CM-M4M6-XX56-1
GW CSSRM	Q65112A2556	GW CSSRM2.CM-M3M5-XX37-1-700-R18-LV		GW CSSRM	Q65112A0844	GW CSSRM2.CM-M3M5-XX57-1-700-R18	GW CSSRM2.CM-M3M5-XX57-1
GW CSSRM	Q65112A2557	GW CSSRM2.CM-M2M4-XX38-1-700-R18-LV		GW CSSRM	Q65112A0853	GW CSSRM2.CM-M2M4-XX58-1-700-R18	GW CSSRM2.CM-M2M4-XX58-1
GW CSSRM	Q65112A3299	GW CSSRM2.CM-M5M6-XX33-1-700-R18-XX		GW CSSRM	Q65112A1650	GW CSSRM2.CM-M5M7-XX53-1-700-R18	GW CSSRM2.CM-M5M7-XX53
GW CSSRM	Q65112A5262	GW CSSRM2.CM-M5M6-XX33-K2L2-700-R18-		GW CSSRM	Q65112A1650	GW CSSRM2.CM-M5M7-XX53-1-700-R18	GW CSSRM2.CM-M5M7-XX53
GW CSSRM	Q65112A0807	GW CSSRM2.EM-M7M9-A535-1-700-R18	GW CSSRM2.EM-M7M9-A535-1	GW CSSRM	Q65112A9033	GW CSSRM3.EM-N1N5-A535-1-700-R18	
GW CSSRM	Q65112A0810	GW CSSRM2.EM-M7M9-A636-1-700-R18	GW CSSRM2.EM-M7M9-A636-1	GW CSSRM	Q65112A9028	GW CSSRM3.EM-MFN3-A636-1-700-R18	
GW CSSRM	Q65112A0814	GW CSSRM2.EM-M8MF-A333-1-700-R18	GW CSSRM2.EM-M8MF-A333-1	GW CSSRM	Q65112A7885	GW CSSRM2.EM-N1N3-A333-1-700-R18	
GW CSSRM	Q65112A0821	GW CSSRM2.EM-M8MF-A535-1-700-R18	GW CSSRM2.EM-M8MF-A535-1	GW CSSRM	Q65112A7853	GW CSSRM2.EM-MFN2-A535-1-700-R18	
GW CSSRM	Q65112A1619	GW CSSRM2.EM-M6M8-A737-0-700-R33-XX	GW CSSRM2.EM-M6M8-A737-XX	GW CSSRM	Q65112A9030	GW CSSRM3.EM-M9N2-A737-1-700-R18	
GW CSSRM	Q65112A2131	GW CSSRM2.EM-M8MF-XX33-1-700-R18-XX	GW CSSRM2.EM-M8MF-XX33-1-XX	GW CSSRM	Q65112A9036	GW CSSRM3.EM-N2N6-XX53-1-700-R18	
GW CSSRM	Q65112A2765	GW CSSRM2.EM-M7M9-XX37-1-700-R18-XX		GW CSSRM	Q65112A9029	GW CSSRM3.EM-M9N2-XX57-1-700-R18	
GW CSSRM	Q65112A2766	GW CSSRM2.EM-M8MF-XX35-1-700-R18-XX		GW CSSRM	Q65112A9036	GW CSSRM3.EM-N2N6-XX53-1-700-R18	
GW CSSRM	Q65112A3028	GW CSSRM2.EM-M7M8-XX57-1-700-R18-DS		GW CSSRM	Q65112A7987	GW CSSRM2.EM-M8MF-XX57-1-700-R18-DS	
GW CSSRM	Q65112A4029	GW CSSRM2.EM-M6M8-XX38-K2L2-700-R18-		GW CSSRM	Q65112A9031	GW CSSRM3.EM-M8N1-XX58-1-700-R18	
GW CSSRM	Q65112A4138	GW CSSRM2.EM-M9N1-XX53-K2L2-700-R18-		GW CSSRM	Q65112A9036	GW CSSRM3.EM-N2N6-XX53-1-700-R18	
GW CSSRM	Q65112A4197	GW CSSRM2.EM-M7M9-XX35-K2M1-700-R18		GW CSSRM	Q65112A9038	GW CSSRM3.EM-N1N5-XX55-1-700-R18	
GW CSSRM	Q65112A4223	GW CSSRM2.EM-M6M8-A838-1-700-R18		GW CSSRM	Q65112A9032	GW CSSRM3.EM-M8N1-A838-1-700-R18	
GW CSSRM	Q65112A4906	GW CSSRM2.EM-M9N1-XX35-1-700-R18-XX		GW CSSRM	Q65112A9038	GW CSSRM3.EM-N1N5-XX55-1-700-R18	
GW CSSRM	Q65112A5561	GW CSSRM2.EM-M9MF-XX55-0-700-R33-ZT		GW CSSRM	Q65112A8807	GW CSSRM3.EM-N3N5-XX55-K2L1-700-R33-	
GW CSSRM	Q65112A5677	GW CSSRM2.EM-M6M8-XX58-K2L1-R18-ZT		GW CSSRM	Q65112A8843	GW CSSRM3.EM-M8MF-XX58-K2L1-700-R33-	
GW CSSRM	Q65112A5887	GW CSSRM2.EM-M8N1-XX55-1-700-R18-SDL		GW CSSRM	Q65112A9038	GW CSSRM3.EM-N1N5-XX55-1-700-R18	
GW CSSRM	Q65112A5888	GW CSSRM2.EM-M8MF-XX57-1-700-R18-SD		GW CSSRM	Q65112A9029	GW CSSRM3.EM-M9N2-XX57-1-700-R18	
GW CSSRM	Q65112A5932	GW CSSRM2.EM-M9N1-XX53-0-700-R33-ZT		GW CSSRM	Q65112A8806	GW CSSRM3.EM-N3N5-XX53-K2L1-700-R33-	
GW CSSRM	Q65112A5933	GW CSSRM2.EM-M7M9-XX57-0-700-R33-ZT		GW CSSRM	Q65112A8743	GW CSSRM3.EM-N2N4-XX57-K2L1-700-R33-	
GW CSSRM	Q65112A5934	GW CSSRM2.EM-M7M9-XX37-0-700-R33-ZT		GW CSSRM	Q65112A8809	GW CSSRM3.EM-N2N4-XX37-K2L1-700-R33-	
GW CSSRM	Q65112A6154	GW CSSRM2.EM-M8M9-XX37-1-700-R18-XX		GW CSSRM	Q65112A9029	GW CSSRM3.EM-M9N2-XX57-1-700-R18	
GW CSSRM	Q65112A6168	GW CSSRM2.EM-M6M8-XX38-0-700-R33-ZT		GW CSSRM	Q65112A8910	GW CSSRM3.EM-M8MF-XX38-K2L1-700-R33-	
GW CSSRM	Q65112A0204	GW CSSRM2.PM-N2N4-A535-1-700-R18	GW CSSRM2.PM-N2N4-A535-1	GW CSSRM	Q65112A6140	GW CSSRM3.PM-N6N8-A535-1-700-R18	
GW CSSRM	Q65112A0611	GW CSSRM2.PM-N3N5-A535-0-700-R33-XX	GW CSSRM2.PM-N3N5-A535-L-XX	GW CSSRM	Q65112A6140	GW CSSRM3.PM-N6N8-A535-1-700-R18	
GW CSSRM	Q65112A0614	GW CSSRM2.PM-N2N4-A535-0-700-R33-XX	GW CSSRM2.PM-N2N4-A535-XX	GW CSSRM	Q65112A6140	GW CSSRM3.PM-N6N8-A535-1-700-R18	

**DISCONTINUED**

**NEW (REPLACEMENT)**

<b>Product</b>	<b>QNumber</b>	<b>QNumber Description</b>	<b>Part Number</b>	<b>Product</b>	<b>QNumber</b>	<b>QNumber Description</b>	<b>Part Number</b>
GW CSSRM	Q65112A1331	GW CSSRM2.PM-N2N5-XX51-K2L2-700-R18-	GW CSSRM2.PM-N1N3-XX51-K2L2-	GW CSSRM	Q65112A6252	GW CSSRM3.PM-N5N7-XX51-1-700-R18	
GW CSSRM	Q65112A1580	GW CSSRM2.PM-N3N5-A333-0-700-R33-XX		GW CSSRM	Q65112A6142	GW CSSRM3.PM-N6N8-A333-1-700-R18	
GW CSSRM	Q65112A1581	GW CSSRM2.PM-N2N5-XX53-K2L2-700-R18-	GW CSSRM2.PM-N1N3-XX53-K2L2-	GW CSSRM	Q65112A6254	GW CSSRM3.PM-N6N8-XX53-1-700-R18	
GW CSSRM	Q65112A2121	GW CSSRM2.PM-N3N5-XX55-1-700-R18-XX	GW CSSRM2.PM-N3N5-XX55-1-XX	GW CSSRM	Q65112A6248	GW CSSRM3.PM-N6N8-XX55-1-700-R18	
GW CSSRM	Q65112A2319	GW CSSRM2.PM-N3N5-A131-1-700-R18-XX	GW CSSRM2.PM-N3N5-A131-1-XX	GW CSSRM	Q65112A6144	GW CSSRM3.PM-N5N7-A131-1-700-R18	
GW CSSRM	Q65112A2367	GW CSSRM2.PM-N4N5-XX55-1-700-R18-XX	GW CSSRM2.PM-N4N5-XX55-1-XX	GW CSSRM	Q65112A6248	GW CSSRM3.PM-N6N8-XX55-1-700-R18	
GW CSSRM	Q65112A2368	GW CSSRM2.PM-N4N5-A535-1-700-R18-XX	GW CSSRM2.PM-N4N5-A535-1-XX	GW CSSRM	Q65112A6140	GW CSSRM3.PM-N6N8-A535-1-700-R18	
GW CSSRM	Q65112A2369	GW CSSRM2.PM-N4N5-XX53-1-700-R18-XX	GW CSSRM2.PM-N4N5-XX53-1-XX	GW CSSRM	Q65112A6254	GW CSSRM3.PM-N6N8-XX53-1-700-R18	
GW CSSRM	Q65112A2370	GW CSSRM2.PM-N4N5-A333-1-700-R18-XX	GW CSSRM2.PM-N4N5-A333-1-XX	GW CSSRM	Q65112A6142	GW CSSRM3.PM-N6N8-A333-1-700-R18	
GW CSSRM	Q65112A2371	GW CSSRM2.PM-N4N5-XX52-1-700-R18-XX	GW CSSRM2.PM-N4N5-XX52-1-XX	GW CSSRM	Q65112A6253	GW CSSRM3.PM-N6N8-XX52-1-700-R18	
GW CSSRM	Q65112A2372	GW CSSRM2.PM-N4N5-XX51-K2L2-R18-XX	GW CSSRM2.PM-N4N5-XX51-1-XX	GW CSSRM	Q65112A6252	GW CSSRM3.PM-N5N7-XX51-1-700-R18	
GW CSSRM	Q65112A2373	GW CSSRM2.PM-N4N5-A232-1-700-R18-XX	GW CSSRM2.PM-N4N5-A232-1-XX	GW CSSRM	Q65112A6143	GW CSSRM3.PM-N6N8-A232-1-700-R18	
GW CSSRM	Q65112A2374	GW CSSRM2.PM-N4N5-A131-1-700-R18-XX	GW CSSRM2.PM-N4N5-A131-1-XX	GW CSSRM	Q65112A6144	GW CSSRM3.PM-N5N7-A131-1-700-R18	
GW CSSRM	Q65112A2376	GW CSSRM2.PM-N3N5-A535-1-700-R18-XX	GW CSSRM2.PM-N3N5-A535-1-XX	GW CSSRM	Q65112A6140	GW CSSRM3.PM-N6N8-A535-1-700-R18	
GW CSSRM	Q65112A2377	GW CSSRM2.PM-N3N5-XX51-1-700-R18-XX	GW CSSRM2.PM-N3N5-XX51-1-XX	GW CSSRM	Q65112A6252	GW CSSRM3.PM-N5N7-XX51-1-700-R18	
GW CSSRM	Q65112A2407	GW CSSRM2.PM-N3N5-XX52-1-700-R18-Q-O		GW CSSRM	Q65112A6253	GW CSSRM3.PM-N6N8-XX52-1-700-R18	
GW CSSRM	Q65112A2464	GW CSSRM2.PM-N3N5-XX33-1-700-R18-XX		GW CSSRM	Q65112A6254	GW CSSRM3.PM-N6N8-XX53-1-700-R18	
GW CSSRM	Q65112A2957	GW CSSRM2.PM-NHN6-XX55-0-700-R33-FU		GW CSSRM	Q65112A6248	GW CSSRM3.PM-N6N8-XX55-1-700-R18	
GW CSSRM	Q65112A3029	GW CSSRM2.PM-N2N3-XX57-1-700-R18-DS		GW CSSRM	Q65112A7760	GW CSSRM2.PM-N2N3-XX57-1-700-R18-DS	
GW CSSRM	Q65112A3198	GW CSSRM2.PM-NHN6-A535-1-700-R18-FU		GW CSSRM	Q65112A6140	GW CSSRM3.PM-N6N8-A535-1-700-R18	
GW CSSRM	Q65112A3199	GW CSSRM2.PM-NHN6-XX55-1-700-R18-FU		GW CSSRM	Q65112A6248	GW CSSRM3.PM-N6N8-XX55-1-700-R18	
GW CSSRM	Q65112A3526	GW CSSRM2.PM-N5N6-XX52-0-700-R33-SHR		GW CSSRM	Q65112A6083	GW CSSRM3.PM-N6N7-XX52-0-700-R33-SHR	
GW CSSRM	Q65112A3527	GW CSSRM2.PM-N5N6-XX55-0-700-R33-SHR		GW CSSRM	Q65112A6082	GW CSSRM3.PM-N6N7-XX55-0-700-R33-SHR	
GW CSSRM	Q65112A3593	GW CSSRM2.PM-N4N5-XX55-0-700-R33-TH		GW CSSRM	Q65112A5480	GW CSSRM2.PM-N5N7-XX55-0-700-R33-TH	
GW CSSRM	Q65112A3597	GW CSSRM2.PM-N4N5-XX52-0-700-R33-TH		GW CSSRM	Q65112A5478	GW CSSRM2.PM-NKN7-XX52-0-700-R33-TH	
GW CSSRM	Q65112A3610	GW CSSRM2.PM-N4N5-XX52-K2L1-700-R18-		GW CSSRM	Q65112A6253	GW CSSRM3.PM-N6N8-XX52-1-700-R18	
GW CSSRM	Q65112A4038	GW CSSRM2.PM-N4N6-XX53-K2L2-700-R18-		GW CSSRM	Q65112A6254	GW CSSRM3.PM-N6N8-XX53-1-700-R18	
GW CSSRM	Q65112A4387	GW CSSRM2.PM-NHN5-XX52-0-700-R33-AS		GW CSSRM	Q65112A6248	GW CSSRM3.PM-N6N8-XX55-1-700-R18	
GW CSSRM	Q65112A5218	GW CSSRM2.PM-N4N5-XX55-0-700-R33-XX		GW CSSRM	Q65112A6248	GW CSSRM3.PM-N6N8-XX55-1-700-R18	
GW CSSRM	Q65112A5284	GW CSSRM2.PM-N5N7-XX55-1-700-R18-XX		GW CSSRM	Q65112A6248	GW CSSRM3.PM-N6N8-XX55-1-700-R18	
GW CSSRM	Q65112A5324	GW CSSRM2.PM-N3N6-A131-1-700-R18-XX		GW CSSRM	Q65112A6144	GW CSSRM3.PM-N5N7-A131-1-700-R18	
GW CSSRM	Q65112A5519	GW CSSRM2.PM-N4N6-75S7-1-700-R18-XX		GW CSSRM	Q65112A5519	GW CSSRM2.PM-N4N6-75S7-1-700-R18-XX	
GW CSSRM	Q65112A6155	GW CSSRM2.PM-N5N7-XX55-0-700-R33-XX		GW CSSRM	Q65112A6248	GW CSSRM3.PM-N6N8-XX55-1-700-R18	
GW CSSRM	Q65112A6156	GW CSSRM2.PM-N2N4-XX57-0-700-R33-XX		GW CSSRM	Q65112A6250	GW CSSRM3.PM-N3N5-XX57-1-700-R18	
GW CSSRM	Q65112A6500	GW CSSRM2.PM-N3N5-XX57-1-700-R18-XX		GW CSSRM	Q65112A6250	GW CSSRM3.PM-N3N5-XX57-1-700-R18	
GW CSSRM	Q65112A7388	GW CSSRM2.PM-N2N3-B2G2-1-700-R18-M-I		GW CSSRM	Q65112A0514	GW CSSRM2.PM-N2N4-B2G2-1-700-R18-M-I	GW CSSRM2.PM-N2N4-B2G2-1-M-IN