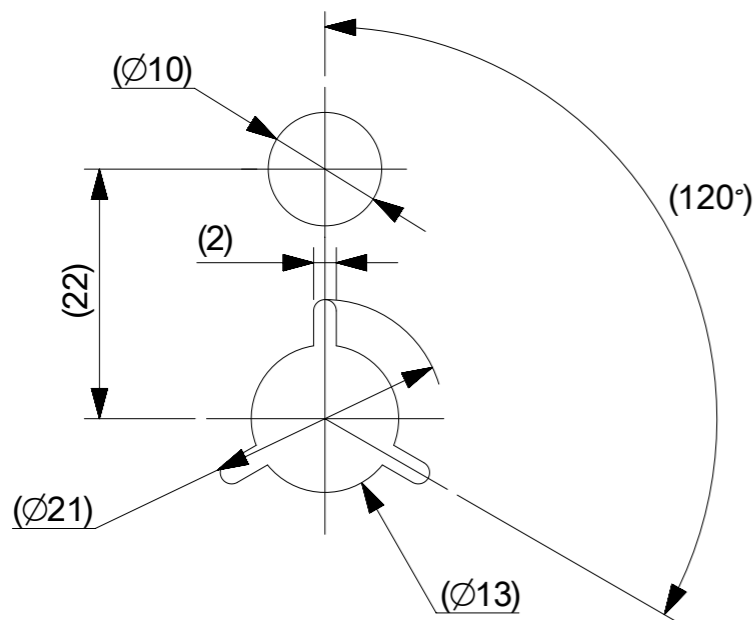
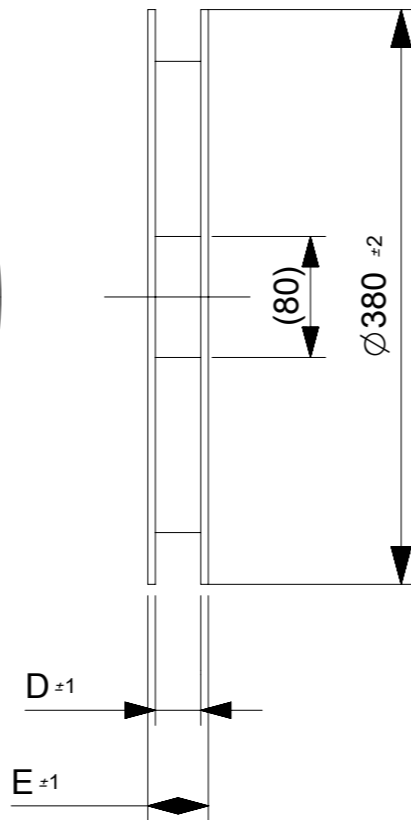
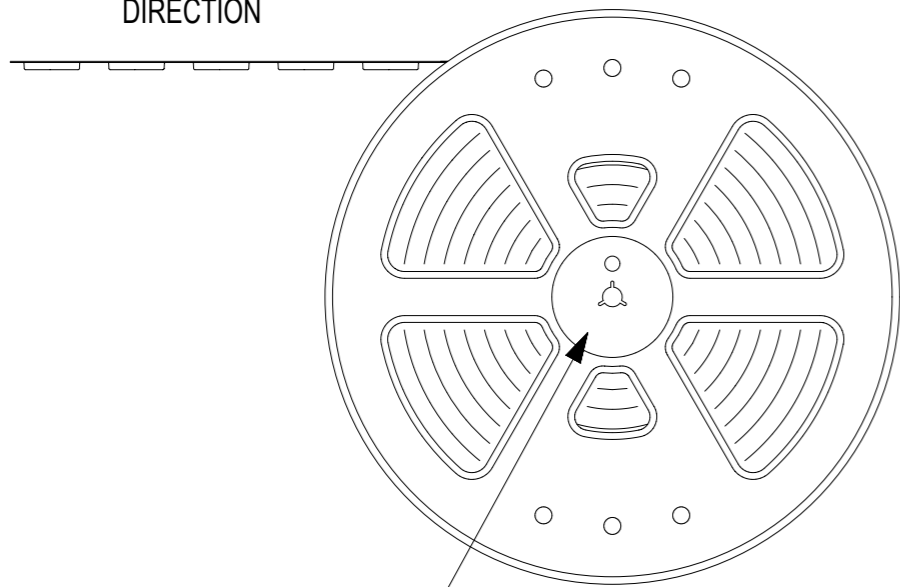


引き出し方向

PULL OUT  
DIRECTION



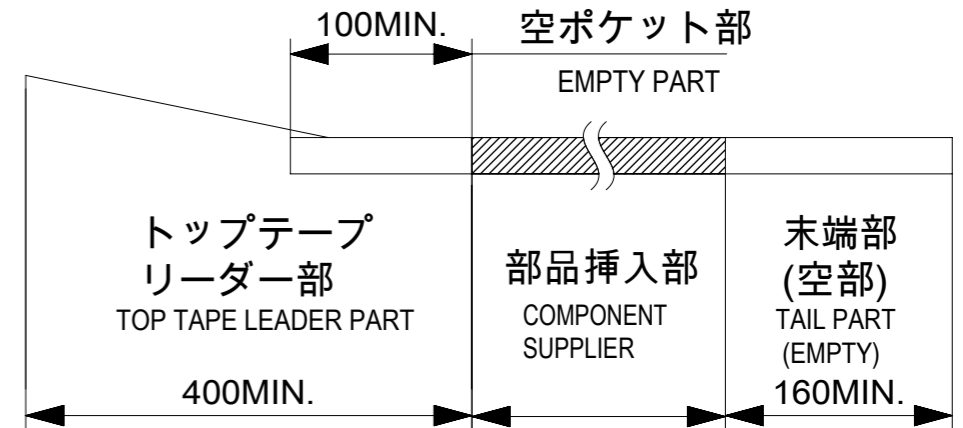
DETAIL "E"

NOTES

1. 梱包数量 : 3000個 / リール  
NUMBER OF CONNECTORS : 3000 PCS/REEL.
2. リードテープ長さ  
LEAD TAPE LENGTH

引き出し方向

PULL OUT  
DIRECTION

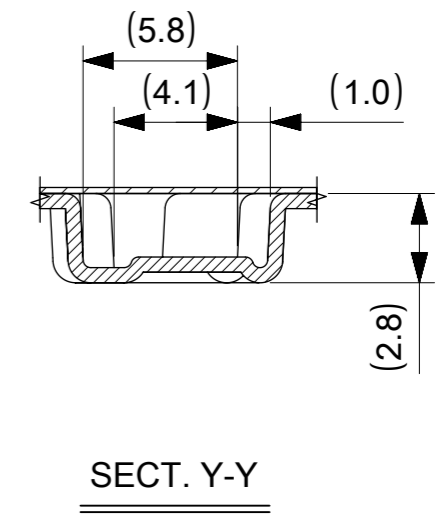
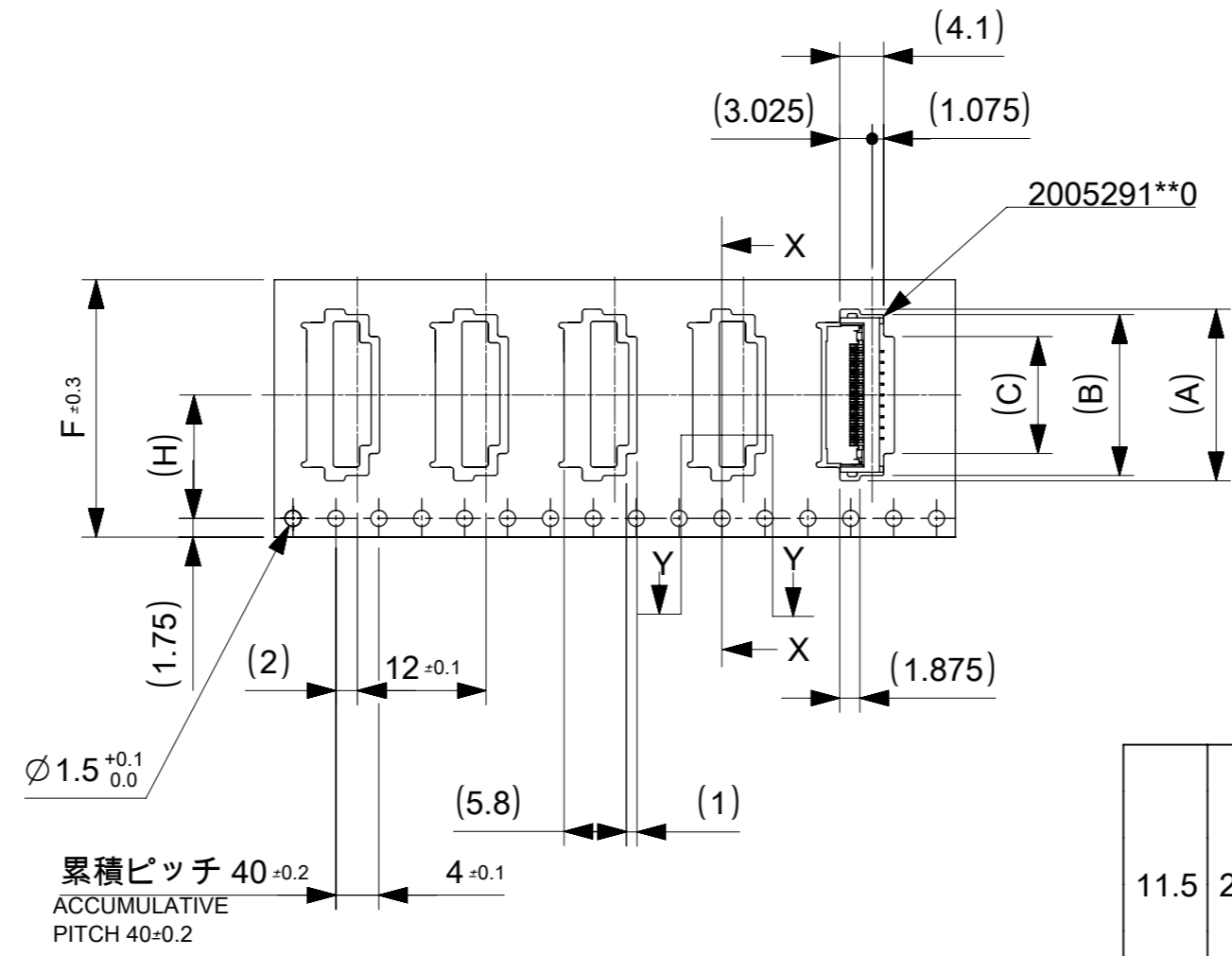
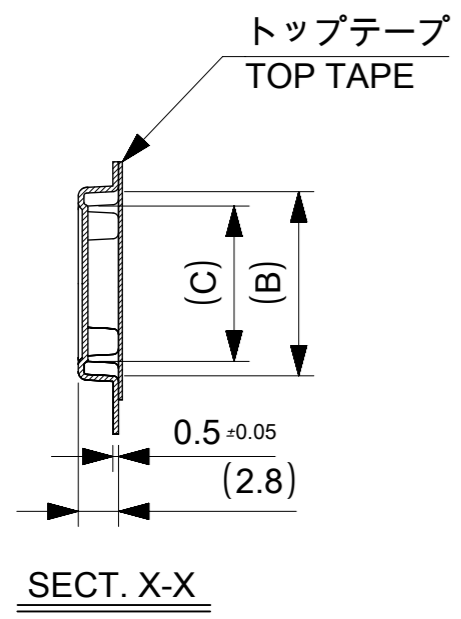


3. カバーテープの剥離強度については、IEC60286-3に準拠。  
COVER TAPE PEEL FORCE IS DEFINED BY IEC 60286-3.
4. 製品詳細寸法については、図面 2005291000-000を参照下さい。  
FOR DIMENTIONS OF PRODUCT, REFER TO 2005291000-000.
5. 材料 MATERIAL  
キャリアテープ : ポリスチレン  
CARRIER TAPE : POLYSTYRENE  
トップテープ : ポリエチレンテレフタレート、ポリエチレン  
TOP TAPE : POLYETHYLENE TEREHTHALATE, POLYETHYLENE  
リール :ポリスチレン<リサイクル材を含む>
6. ELV及びRoHS適合品 ELV AND RoHS COMPLIANT.

THIS DRAWING CONTAINS INFORMATION THAT IS PROPRIETARY TO MOLEX ELECTRONIC TECHNOLOGIES, LLC AND SHOULD NOT BE USED WITHOUT WRITTEN PERMISSION

REVISED	EC NO: 103009	2016/02/09	GENERAL TOLERANCES (UNLESS SPECIFIED)	DIMENSION UNITS	SCALE	<b>molex</b>			
	DRWN: MTAKAHASHI04	2016/02/19	ANGULAR TOL ± 1.0 °	mm	2:1				
	CHK'D: TKUSUHARA01	2016/02/19	4 PLACES ± 0.05	DRWN BY	DATE	PRODUCT CUSTOMER DRAWING			
	APPR: TKUSUHARA01		3 PLACES ± 0.1	MTAKAHASHI04	2015/12/24				
			2 PLACES ± 0.2	CHK'D BY	DATE	DOCUMENT NUMBER DOC TYPE DOC PART SHEET NUMBER 2005290000 PSD 000 1 OF 2			
		1 PLACE ± 0.2	KTAKAHASHI	2015/12/25					
		0 PLACES ± 0.2	APPR BY	DATE					
			YNOGAWA	2016/01/04					
			DRAFT WHERE APPLICABLE MUST REMAIN WITHIN DIMENSIONS	DRAWING SIZE	THIRD ANGLE PROJECTION				
				A3					

引き出し方向  
PULL OUT  
DIRECTION

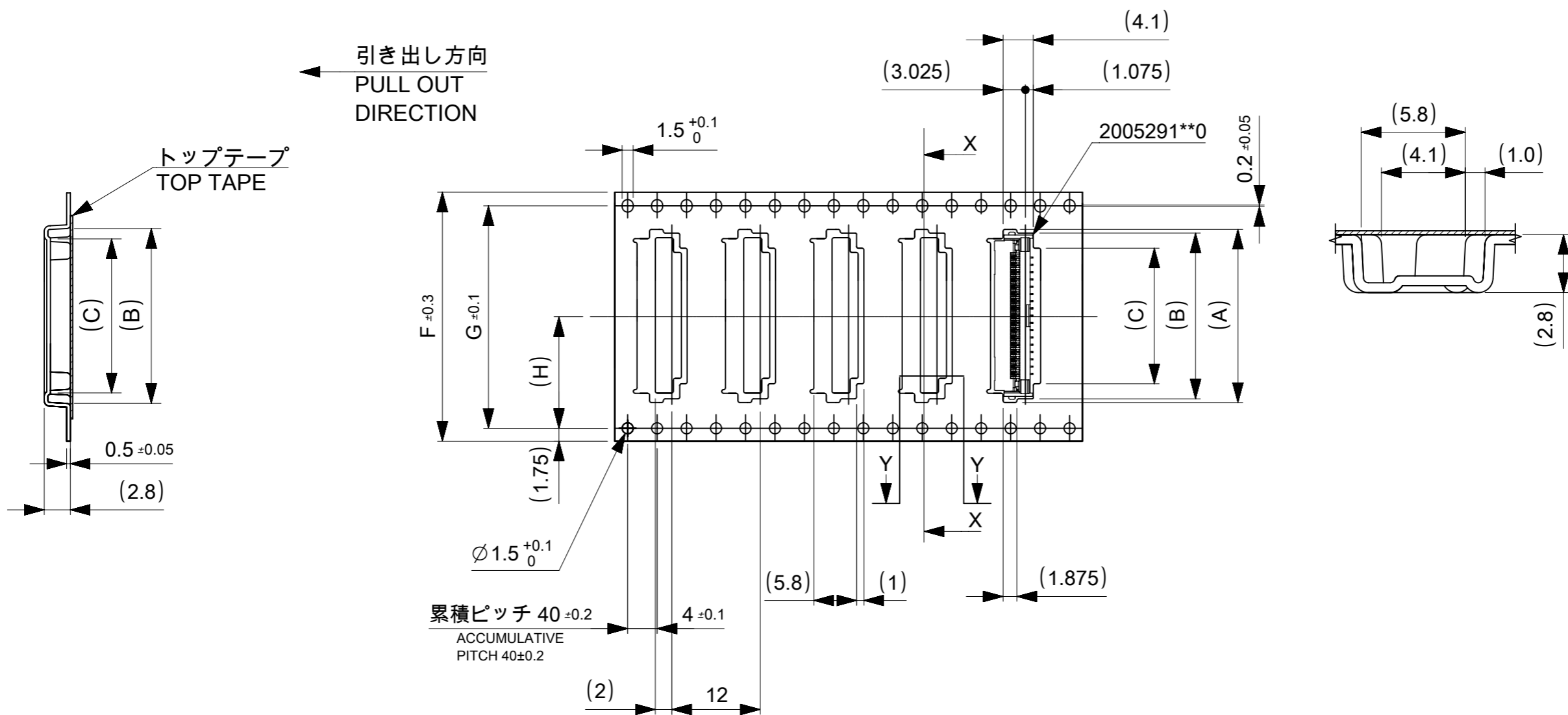


11.5	24	29.4	25.4	10.4	14.4	15.5	2005290090	9
				9.4	13.4	14.5	2005290080	8
				8.4	12.4	13.5	2005290070	7
				7.4	11.4	12.5	2005290060	6
				6.4	10.4	11.5	2005290050	5
				5.4	9.4	10.5	2005290040	4
H	F	E	D	C	B	A	EMBOSSED PACKAGE オーダー番号 ORDER NO.	Ckt
CONNECTER NO. 2005291**0								

THIS DRAWING CONTAINS INFORMATION THAT IS PROPRIETARY TO MOLEX ELECTRONIC TECHNOLOGIES, LLC AND SHOULD NOT BE USED WITHOUT WRITTEN PERMISSION

EC NO: 103009 DRWN: MTAKAHASHI04 CHK'D: TKUSUHARA01 APPR: TKUSUHARA01	2016/02/09	2016/02/19	2016/02/19	GENERAL TOLERANCES (UNLESS SPECIFIED) ANGULAR TOL ± 1.0 ° 4 PLACES ± 0.05 3 PLACES ± 0.1 2 PLACES ± 0.2 1 PLACE ± 0.2 0 PLACES ± 0.2 DRAFT WHERE APPLICABLE MUST REMAIN WITHIN DIMENSIONS	DIMENSION UNITS	SCALE	
	REVISIONS	DATE	DATE		mm	1:1	
	DRWN BY	DATE	DATE		MTAKAHASHI04	2015/12/24	
	CHK'D BY	DATE	DATE		KTAKAHASHI	2015/12/25	
	APPR BY	DATE	DATE		YNOGAWA	2016/01/04	
REV	DATE	DATE	DRAWING SIZE	THIRD ANGLE PROJECTION	PRODUCT CUSTOMER DRAWING SERIES: 200529 MATERIAL NUMBER: SEE CHART CUSTOMER: GENERAL		
B			A3		DOCUMENT NUMBER: 2005290000 DOC TYPE: PSD DOC PART: 000 SHEET NUMBER: 2 OF 2		



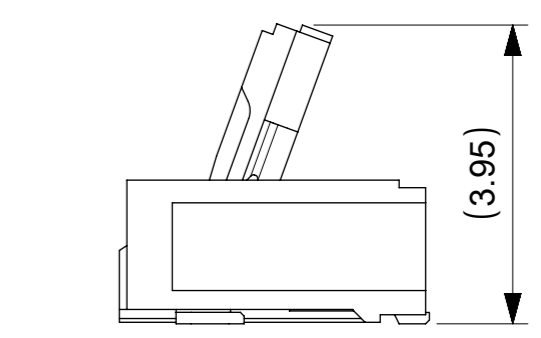
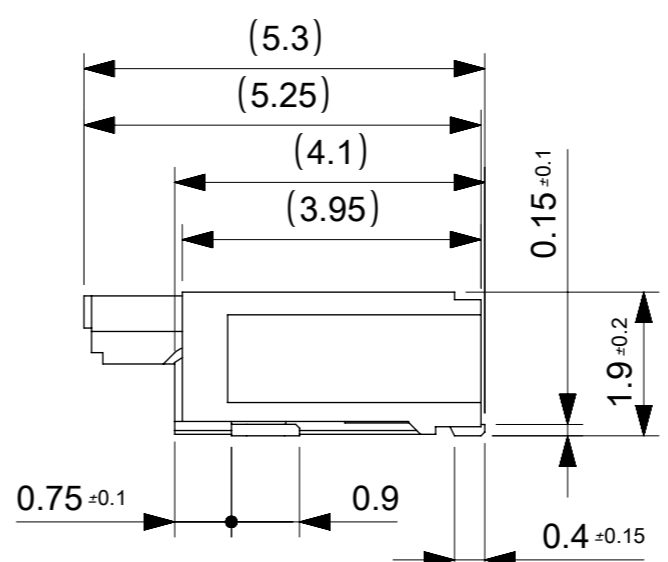
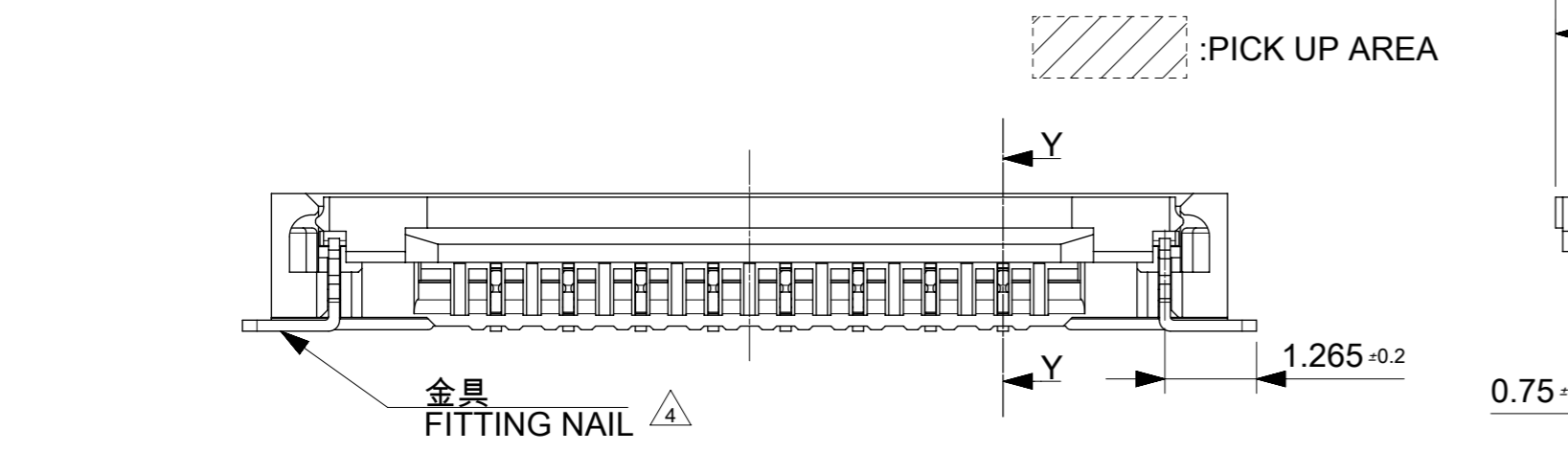
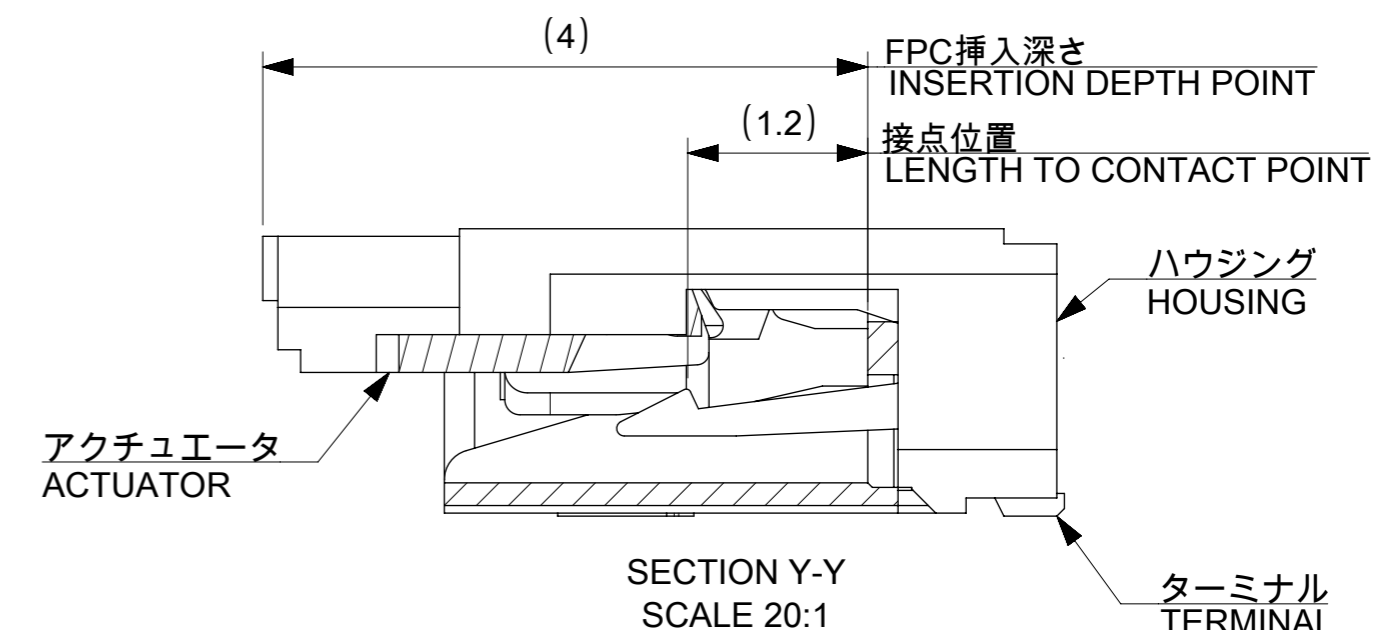
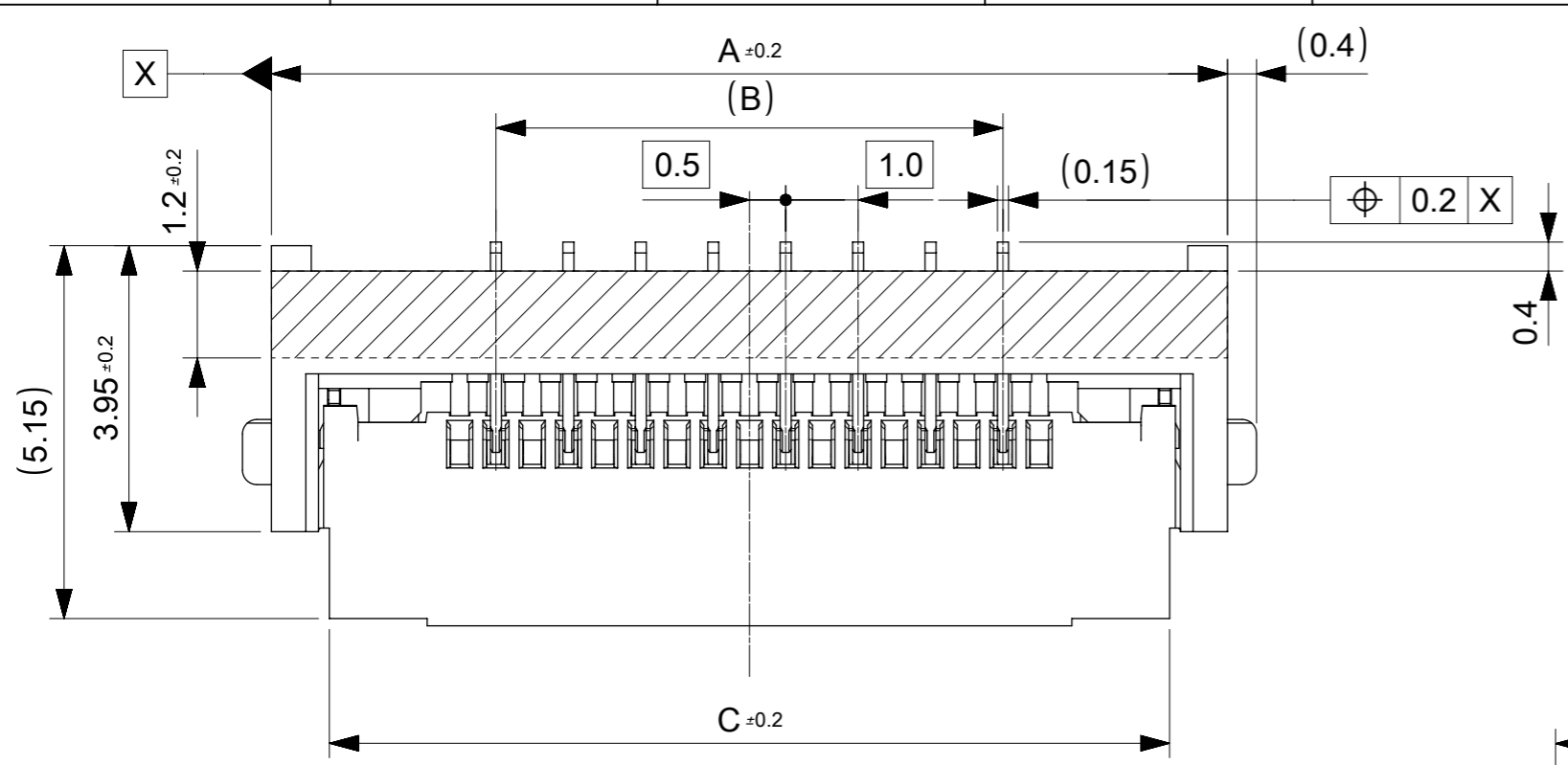


20.2	40.4	44	49.4	45.4	23.4	27.4	28.5	2005290220	22
					18.4	22.4	23.5	2005290170	17
H	G	F	E	D	C	B	A	EMBOSSED PACKAGE	Ckt
								オーダー番号 ORDER NO.	

CONNECTOR SERIES NO. 2005291\*\*0

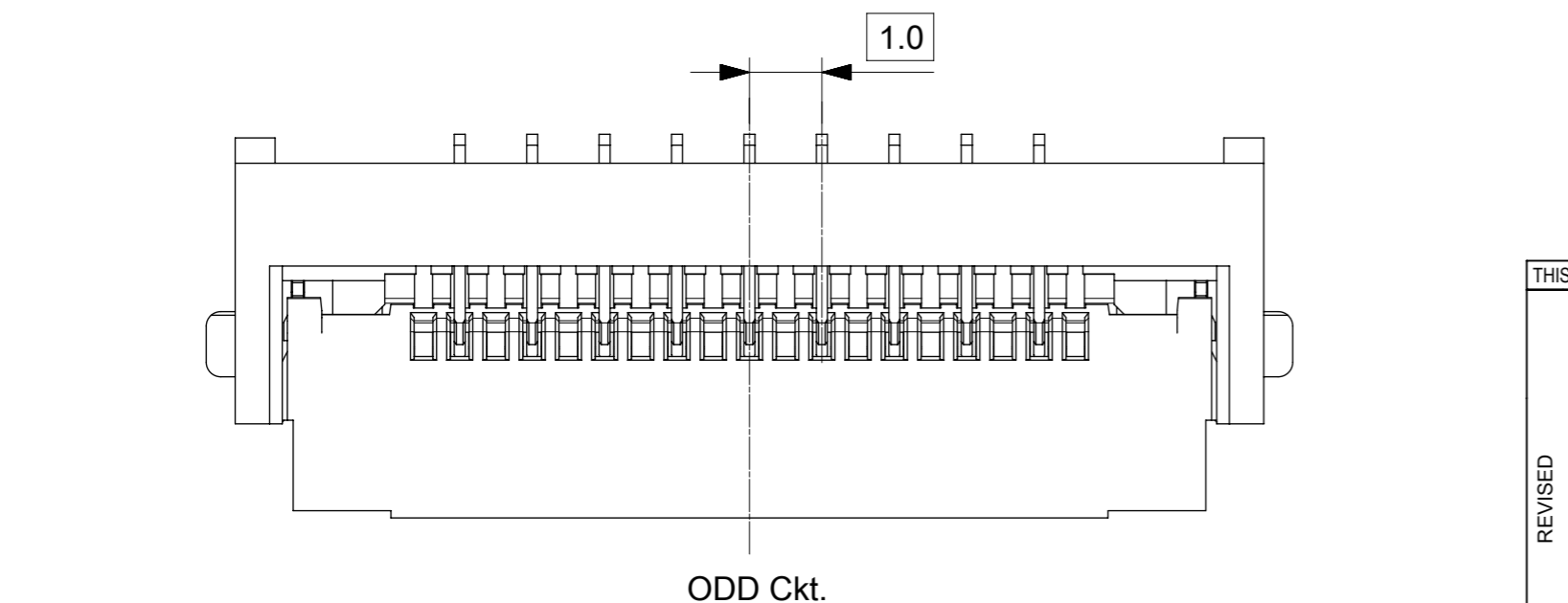
THIS DRAWING CONTAINS INFORMATION THAT IS PROPRIETARY TO MOLEX ELECTRONIC TECHNOLOGIES, LLC AND SHOULD NOT BE USED WITHOUT WRITTEN PERMISSION

EC NO: 103009 DRWN: MTAKAHASHI04 CHK'D: TKUSUHARA01 APPR: TKUSUHARA01	2016/02/09	2016/02/19	2016/02/19	GENERAL TOLERANCES (UNLESS SPECIFIED) ANGULAR TOL ± 1.0 ° 4 PLACES ± 0.05 3 PLACES ± 0.1 2 PLACES ± 0.2 1 PLACE ± 0.2 0 PLACES ± 0.2 DRAFT WHERE APPLICABLE MUST REMAIN WITHIN DIMENSIONS	DIMENSION UNITS	SCALE				
	REVISED				mm	2:1				
		DRWN BY	DATE		MTAKAHASHI04	2015/12/24				
		CHK'D BY	DATE		KTAKAHASHI	2015/12/25				
		APPR BY	DATE		YNOGAWA	2016/01/04				
	DRAWING SIZE	THIRD ANGLE PROJECTION	A3		PRODUCT CUSTOMER DRAWING					
	SERIES	MATERIAL NUMBER	CUSTOMER	200529			SEE CHART	GENERAL		
	DOCUMENT NUMBER	DOC TYPE	DOC PART	SHEET NUMBER	2005290006			PSD	000	2 OF 2



12.6	8.0	14.2	2005290090	9
11.6	7.0	13.2	2005290080	8
10.6	6.0	12.2	2005290070	7
9.6	5.0	11.2	2005290060	6
8.6	4.0	10.2	2005290050	5
7.6	3.0	9.2	2005290040	4
C	B	A	EMBOSSED PACKAGE オーダー番号 ORDER NO.	Ckt

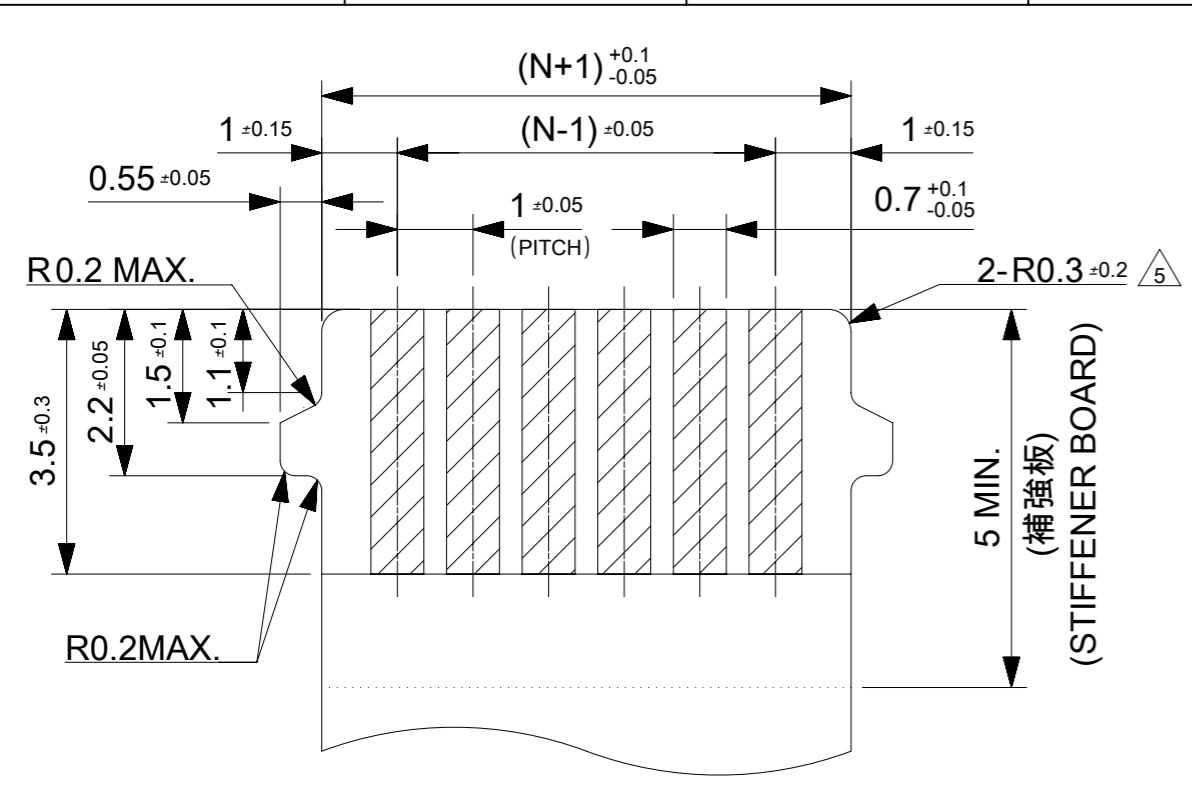
CONNECTOR SERIES NO.2005291\*\*0



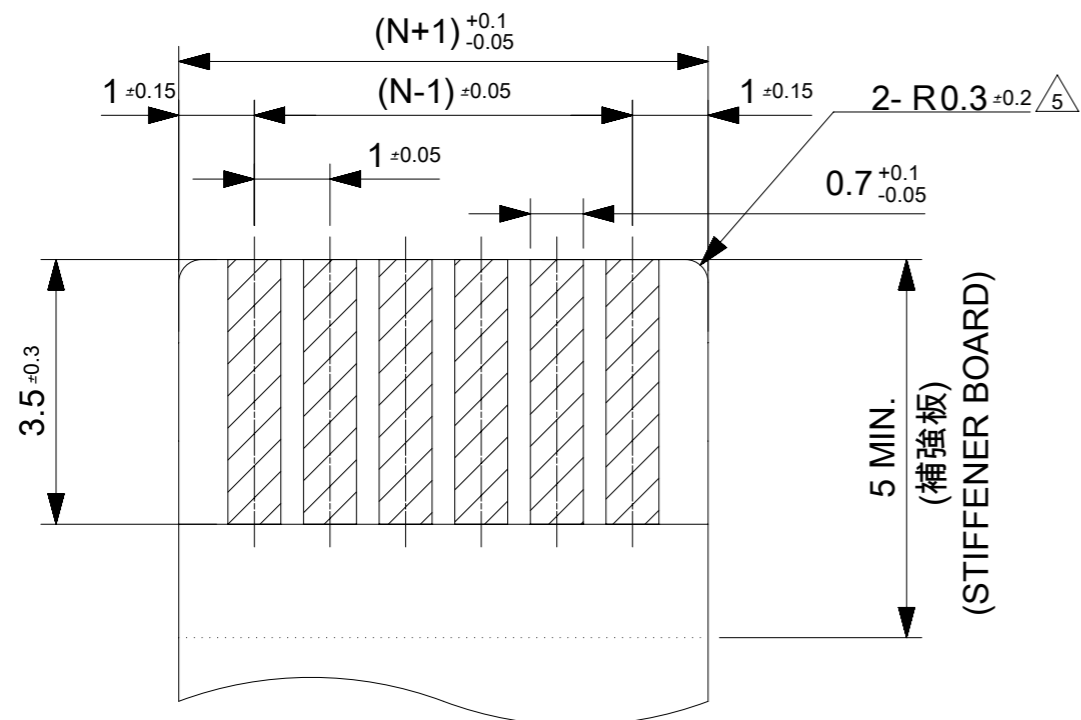
THIS DRAWING CONTAINS INFORMATION THAT IS PROPRIETARY TO MOLEX ELECTRONIC TECHNOLOGIES, LLC AND SHOULD NOT BE USED WITHOUT WRITTEN PERMISSION

REVISED	2017/06/09	DRWN: JASANUMA	GENERAL TOLERANCES (UNLESS SPECIFIED)	DIMENSION UNITS	SCALE	
	2017/06/12	CHK'D: YKOBAYASHI02	ANGULAR TOL ± 1.0 °	MM	10:1	
	2017/06/12	APPR: TKUSUHARA01	4 PLACES ± 0.05	DRWN BY	DATE	
	EC NO: 117930		3 PLACES ± 0.1	MTAKAHASHI04	2015/12/24	
			2 PLACES ± 0.2	CHK'D BY	DATE	1.0 FPC ZIF BTM CONT HSG ASSY PRODUCT CUSTOMER DRAWING
			1 PLACE ± 0.2	KTAKAHASHI	2015/12/25	
			0 PLACES ± 0.2	APPR BY	DATE	
			DRAFT WHERE APPLICABLE MUST REMAIN WITHIN DIMENSIONS	YNOGAWA	2016/01/04	SERIES: 200529 MATERIAL NUMBER: SEE CHART CUSTOMER: GENERAL
				DRAWING SIZE	THIRD ANGLE PROJECTION	DOCUMENT NUMBER: 2005291000 DOC TYPE: PSD DOC PART: 000 SHEET NUMBER: 1 OF 3
				A3		

適合FPC/FFC推奨寸法  
APPLICABLE FPC/FFC  
RECOMMENDED DIMENSION



耳無し適合FPC/FFC推奨寸法  
APPLICABLE NON-TAB FPC/FFC  
RECOMMENDED DIMENSION



- 補強板: ポリイミド  
REINFORCE BOARD: POLYIMIDE
- 熱硬化接着剤  
THERMOSETTING ADHESIVE
- ベースフィルム: ポリイミド(25μm)  
BASE FILM: POLYIMIDE(25μm)
- 熱硬化接着剤  
THERMOSETTING ADHESIVE
- 導体部: 銅箔(35μm)  
CONDUCTIVE PART: COPPER FOIL (35μm)
- 熱硬化接着剤  
THERMOSETTING ADHESIVE
- カバーレイ: ポリイミド(25μm)  
COVER FILM: POLYIMIDE(25μm)

FPC構成推奨仕様  
STRUCTURE OF FPC

- 補強板: ポリエステル系  
REINFORCE BOARD: PET
- 接着剤(難燃ポリエステル系)  
ADHESIVE (FLAME-RETARDANT POLYESTER ADHESIVE)
- 絶縁テープ: ポリエステル系(25μm)  
INSULATING FILM: PET(25μm)
- 接着剤(難燃ポリエステル系)  
ADHESIVE (FLAME-RETARDANT POLYESTER ADHESIVE)
- 導体部: 銅箔(35μmか50μm)  
CONDUCTIVE PART: COPPER FOIL (35μm or 50μm)
- 接着剤(難燃ポリエステル系)  
ADHESIVE (FLAME-RETARDANT POLYESTER ADHESIVE)
- 絶縁テープ: ポリエステル系(25μm)  
INSULATING FILM: PET(25μm)

FFC構成推奨仕様  
STRUCTURE OF FFC

THIS DRAWING CONTAINS INFORMATION THAT IS PROPRIETARY TO MOLEX ELECTRONIC TECHNOLOGIES, LLC AND SHOULD NOT BE USED WITHOUT WRITTEN PERMISSION

REVISED	2017/06/09	GENERAL TOLERANCES (UNLESS SPECIFIED)	DIMENSION UNITS	SCALE	
	2017/06/12		MM	##	
	2017/06/12		ANGULAR TOL ± 1.0 °	DRWN BY	DATE
	4 PLACES ± 0.05		MTAKAHASHI04	2015/12/24	
	3 PLACES ± 0.1		CHK'D BY	DATE	
2 PLACES ± 0.2	KTAKAHASHI	2015/12/25			
1 PLACE ± 0.2	APPR BY	DATE			
0 PLACES ± 0.2	YNOGAWA	2016/01/04			
DRAFT WHERE APPLICABLE MUST REMAIN WITHIN DIMENSIONS			DRAWING SIZE	THIRD ANGLE PROJECTION	
C	REV		A3		

<b>molex</b>			
1.0 FPC ZIF BTM CONT HSG ASSY			
PRODUCT CUSTOMER DRAWING			
SERIES	MATERIAL NUMBER	CUSTOMER	
200529	SEE SHEET 1	GENERAL	
DOCUMENT NUMBER		DOC TYPE	DOC PART SHEET NUMBER
2005291000		PSD	000 2 OF 3

注記 NOTES

1.使用材料 MATERIAL

ハウジング :液晶ポリマー ガラス充填、UL94V-0(ベージュ)  
 HOUSING LIQUID CRYSTAL POLYMER GLASS FILLED, UL94V-0(BEIGE)  
 アクチュエータ :ポリアミド ガラス充填、UL94V-0(黒)  
 ACTUATOR POLYAMIDE GLASS FILLED, UL94V-0(BLACK)  
 ターミナル :リン青銅(t=0.15)  
 TERMINAL PHOSPHOR BRONZE  
 金具 :リン青銅(t=0.15)  
 FITTING NAIL PHOSPHOR BRONZE

2.めっき仕様 PLATING

ターミナル TERMINAL  
 錫銀ビスマスめっき (1.0µm以上)  
 下地:ニッケルめっき (1.0µm以上)  
 TINSILVER BISMUTH PLATING (1.0 MICROMETER MINIMUM)  
 UNDERPLATE : NICKEL OVERALL (1.0 MICROMETER MINIMUM)  
 金具 FITTING NAIL  
 錫めっき(1.0µm以上)  
 下地:ニッケルめっき (1.0µm以上)  
 TIN PLATING (1.0 MICROMETER MIN.)  
 UNDER PLATING : NICKEL PLATING (1.0 MICROMETER MIN.)

3.エンボステープ梱包時は、アクチュエータが閉じた状態とする。  
 IN THE PACKAGE, ACTUATOR OF PART SHOULD BE CLOSED.

パターン剥離止め用金具

4. FITTING NAIL FOR PREVENTION OF PEELING OF P.C.B. PATTERN.

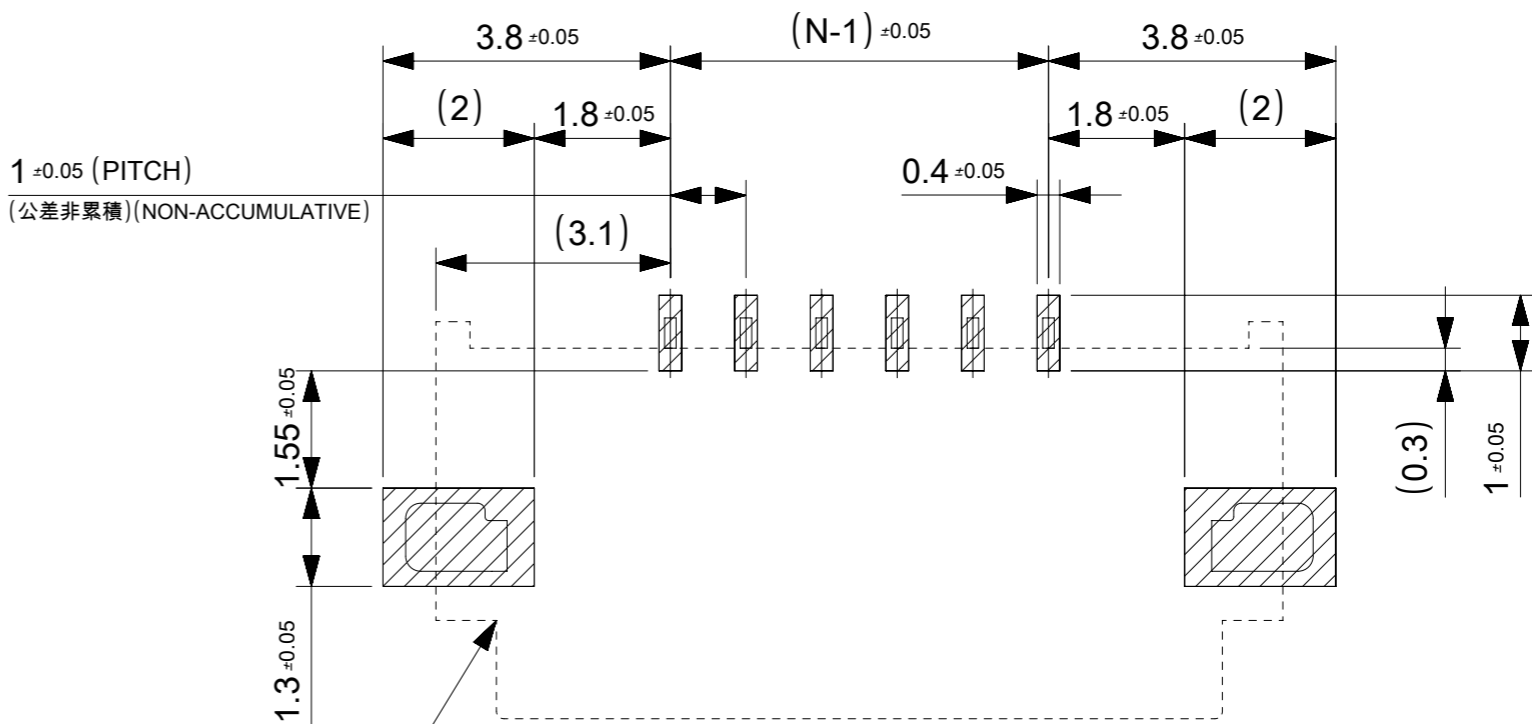
R0.3はFPC/FFC導体部にかからないこと。

5. R0.3 MUST NOT BE OVERLAPPED TO PATTERN OF FPC/FFC.

6.N:極数 N:CIRCUIT.

7.ELV及びRoHS適合品  
 ELV AND RoHS COMPLIANT

8.テールと金具を併せた平坦度は0.1以下とする。  
 TAILS AND NAILS COPLANALITY TO BE 0.1 MAX.



コネクタ位置  
 (CONNECTOR POSITION)

推奨基板レイアウト  
 RECOMENDED P.W.B.  
 PATTERN LAYOUT

参考マスク厚 : 100µm  
 参考マスク開口率 : 100%  
 REFERENCE SCREEN THICKNESS : 100µm  
 REFERENCE SCREEN OPEN RATIO : 100%

FPC/FFCについて ABOUT FPC/FFC

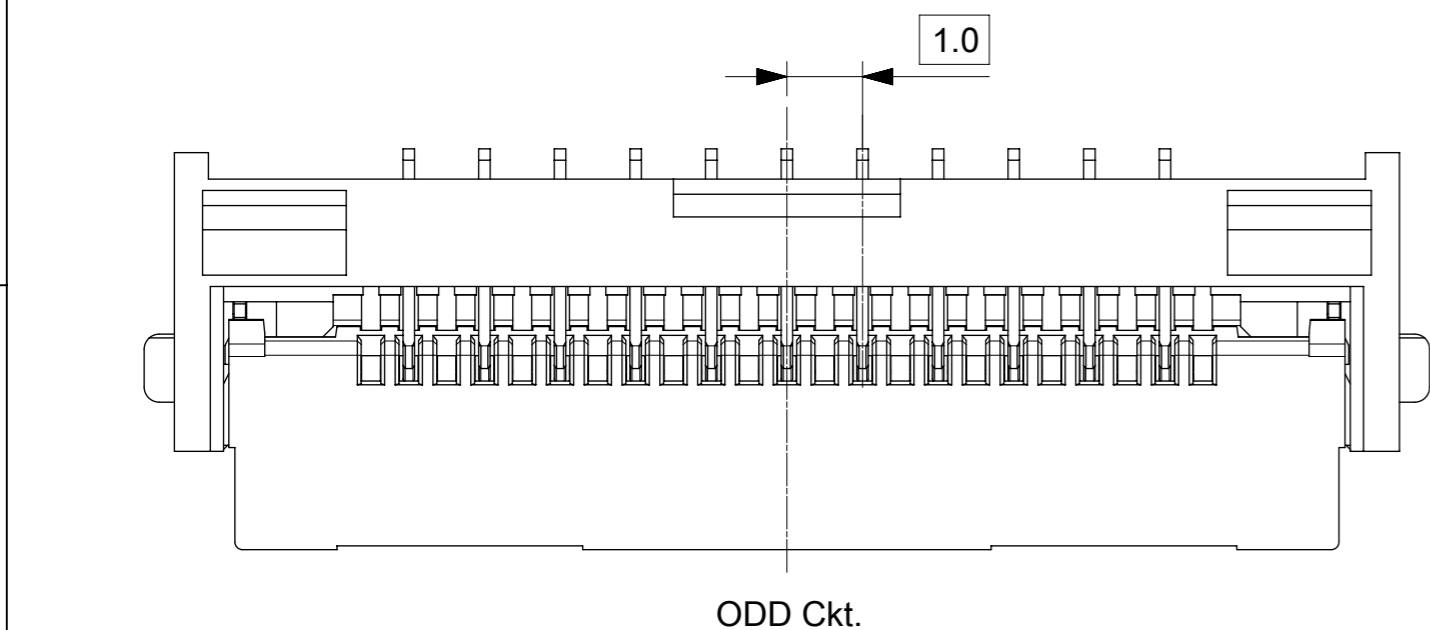
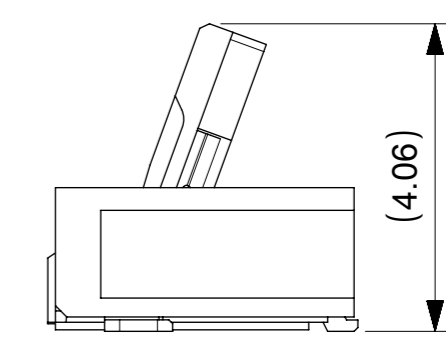
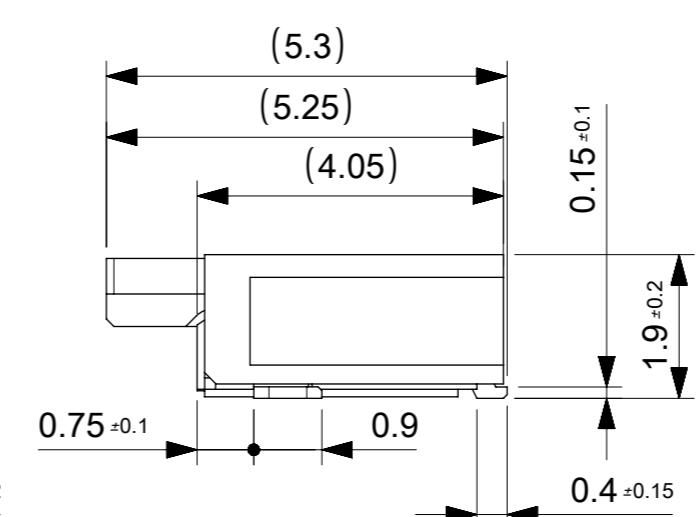
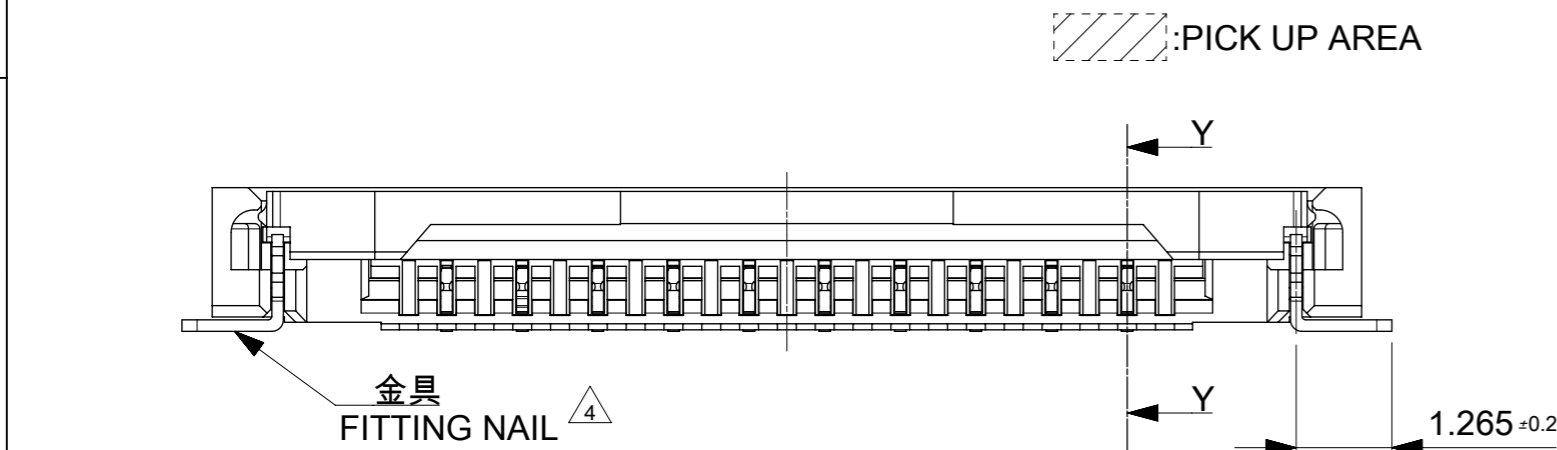
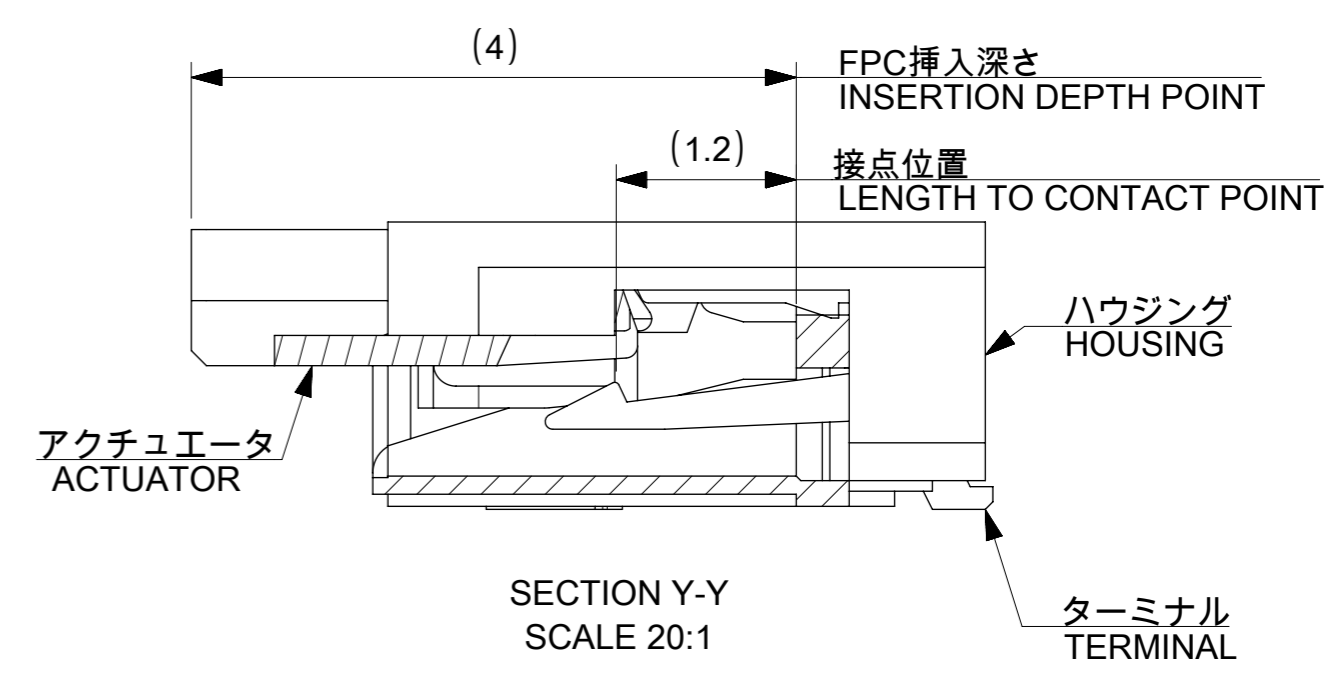
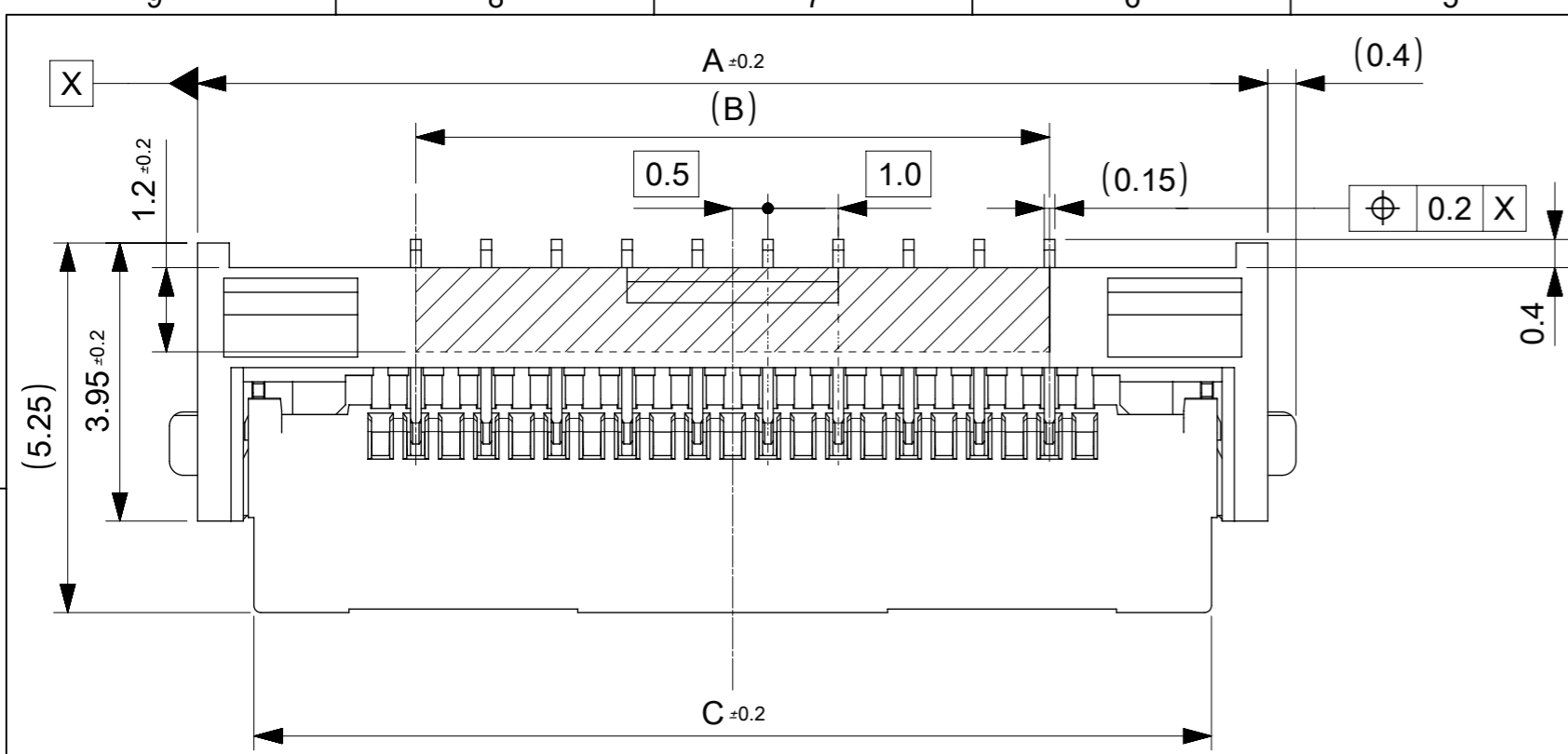
打ち抜き方向は導体側から補強板側を推奨します。  
 導体部については軟箔銅35µmまたは50µmを推奨します。  
 FFCに規定された定格温度がFFC単体前提である場合が御座います。  
 コネクタと組み合わせての実使用において、接着層が劣化するなどの信頼性を満足できないケースを回避するため、  
 実機での評価/確認をお願いいたします。  
 RECOMMENDED PUNCHING DIRECTION : FROM CONDUCTOR SIDE TO STIFFENER SIDE  
 RECOMMENDED CONDUCTOR SPEC : SOFT COPPER FOIL  
 RECOMMENDED CONDUCTOR THICKNESS : 35 MICROMETER OR 50 MICROMETER  
 WHEN ACTUALLY USING IT WITH CONNECTOR, PLEASE DO THE EVALUATION AND THE CONFIRMATION WITH AN ACTUAL EQUIPMENT TO EVADE THE CASE WHERE RELIABILITY CANNOT BE FILLED (THE ADHESIVE LINE OF FFC IS DETERIORATED ETC.)

FPCについて ABOUT FPC

補強フィルム材質はポリイミドを推奨します。ベースフィルムは25µmを推奨します。  
 接着剤は熱硬化接着剤を推奨します。  
 尚、接着剤の接点部への付着は導通不良の原因になりますので、染み出しが無い様お願い致します。  
 RECOMMENDED MATERIAL/THICKNESS.  
 RECOMMENDED STIFFENER MATERIAL: POLYIMIDE  
 RECOMMENDED BASE FILM THICKNESS: 25 MICROMETER  
 RECOMMENDED ADHESIVE: THERMOSETTING ADHESIVE  
 PLEASE PUT APPROPRIATE AMOUNT OF ADHESIVE ON ADHEREND BECAUSE THERE IS A POSSIBILITY THAT THE EXTRA ADHESIVE CAUSES THE DEFECT IN ELECTRICAL CONTINUITY.  
 THERE IS A POSSIBILITY THAT THE PRESCRIPT TEMPERATURE OF FFC IS SET TO SINGLE IT.

THIS DRAWING CONTAINS INFORMATION THAT IS PROPRIETARY TO MOLEX ELECTRONIC TECHNOLOGIES, LLC AND SHOULD NOT BE USED WITHOUT WRITTEN PERMISSION

REVISED	2017/06/09	GENERAL TOLERANCES (UNLESS SPECIFIED)		DIMENSION UNITS	SCALE	<b>molex®</b>
	2017/06/12	ANGULAR TOL ± 1.0 °		MM	±±	
	2017/06/12	4 PLACES ± 0.05	MTAKAHASHI04	DATE	2015/12/24	
	2017/06/12	3 PLACES ± 0.1	CHK'D BY	DATE	2015/12/25	
EC NO: 117930 DRWN: JASANUMA CHK'D: YKOBAYASHI02 APPR: TKUSUHARA01	2017/06/12	2 PLACES ± 0.2	APPR BY	DATE	2016/01/04	PRODUCT CUSTOMER DRAWING
	2017/06/12	1 PLACE ± 0.2	DRAWING SIZE	THIRD ANGLE PROJECTION		
	2017/06/12	0 PLACES ± 0.2	A3			
	2017/06/12	DRAFT WHERE APPLICABLE MUST REMAIN WITHIN DIMENSIONS				
SERIES		MATERIAL NUMBER		CUSTOMER		1.0 FPC ZIF BTM CONT HSG ASSY
200529		SEE SHEET 1		GENERAL		
DOCUMENT NUMBER		DOC TYPE	DOC PART	SHEET NUMBER		
2005291000		PSD	000	3 OF 3		



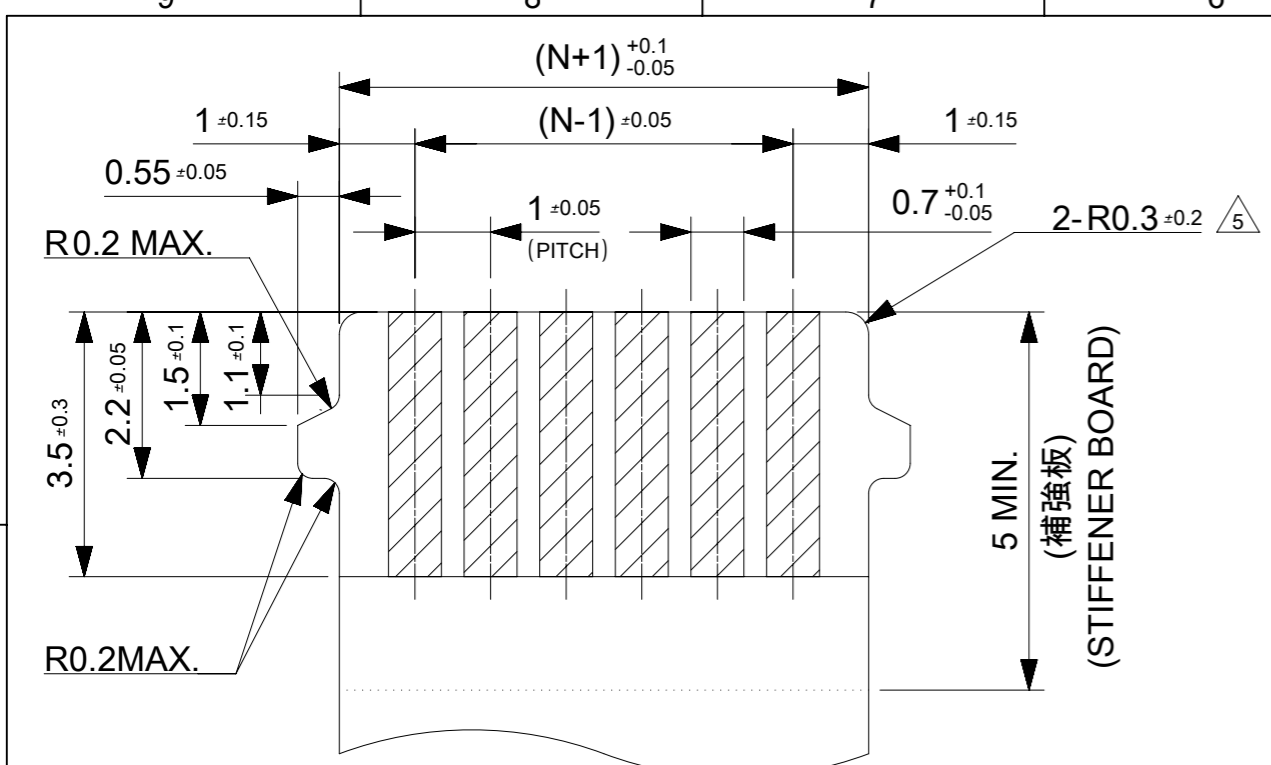
25.6	21	27.2	2005290220	22
20.6	16	22.2	2005290170	17
C	B	A	EMBOSSED PACKAGE オーダー番号 ORDER NO.	Ckt

CONNECTOR SERIES NO. 2005291\*\*0

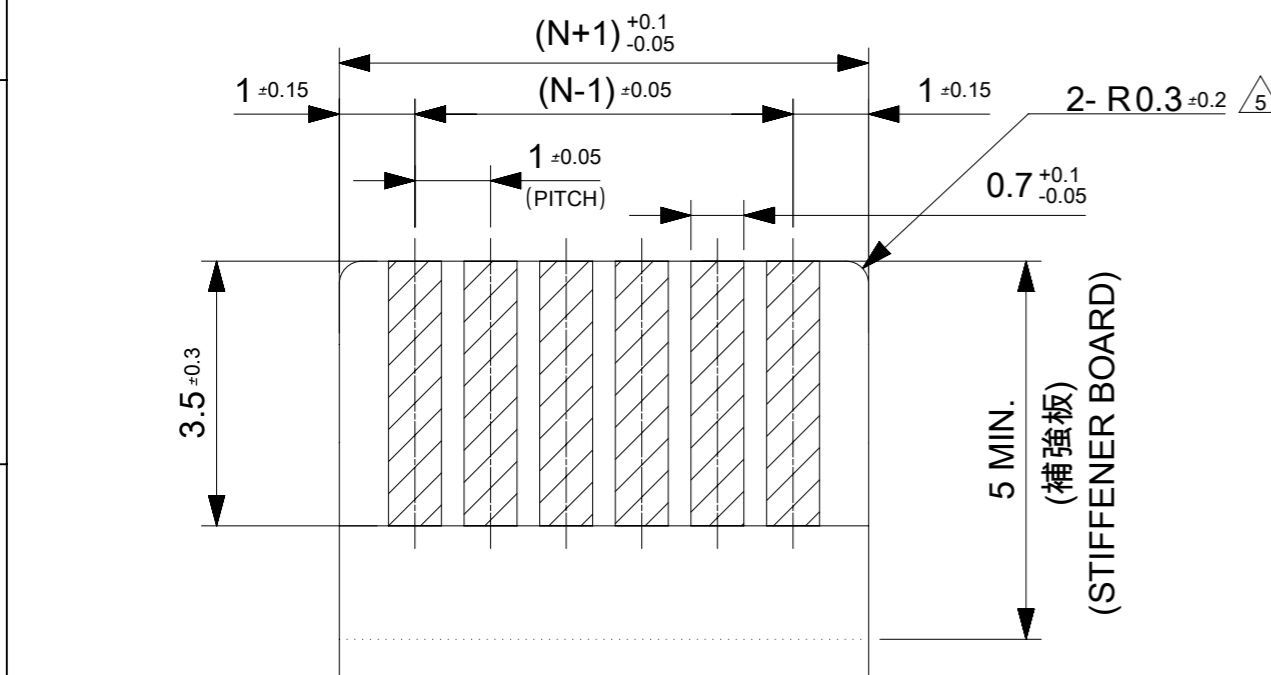
THIS DRAWING CONTAINS INFORMATION THAT IS PROPRIETARY TO MOLEX ELECTRONIC TECHNOLOGIES, LLC AND SHOULD NOT BE USED WITHOUT WRITTEN PERMISSION

REVISED	2017/06/09	GENERAL TOLERANCES (UNLESS SPECIFIED)	DIMENSION UNITS	SCALE			
	2017/06/12		MM	10:1			
	2017/06/12		ANGULAR TOL ± 1.0 °	DRWN BY		DATE	
	2017/06/12		4 PLACES ± 0.05	MTAKAHASHI04		2015/12/24	
EC NO: 117930	DRWN: JASANUMA	3 PLACES ± 0.1	CHK'D BY	DATE	<p>1.0 FPC ZIF BTM CONT HSG ASSY</p> <p>PRODUCT CUSTOMER DRAWING</p>		
	CHK'D: YKOBAYASHI02	2 PLACES ± 0.2	KTAKAHASHI	2015/12/25			
	APPR: TKUSUHARA01	1 PLACE ± 0.2	YNOGAWA	2016/01/04			
		0 PLACES ± 0.2	DRAWING SIZE	THIRD ANGLE PROJECTION			
D	REV	DRAFT WHERE APPLICABLE MUST REMAIN WITHIN DIMENSIONS	A3		<p>SERIES: 200529</p> <p>MATERIAL NUMBER: SEE CHART</p> <p>CUSTOMER: GENERAL</p>		
RELEASE STATUS P1		RELEASE DATE 12.06.2017 07:07:21	DOCUMENT NUMBER 2005291006		DOC TYPE PSD	DOC PART 000	SHEET NUMBER 1 OF 3

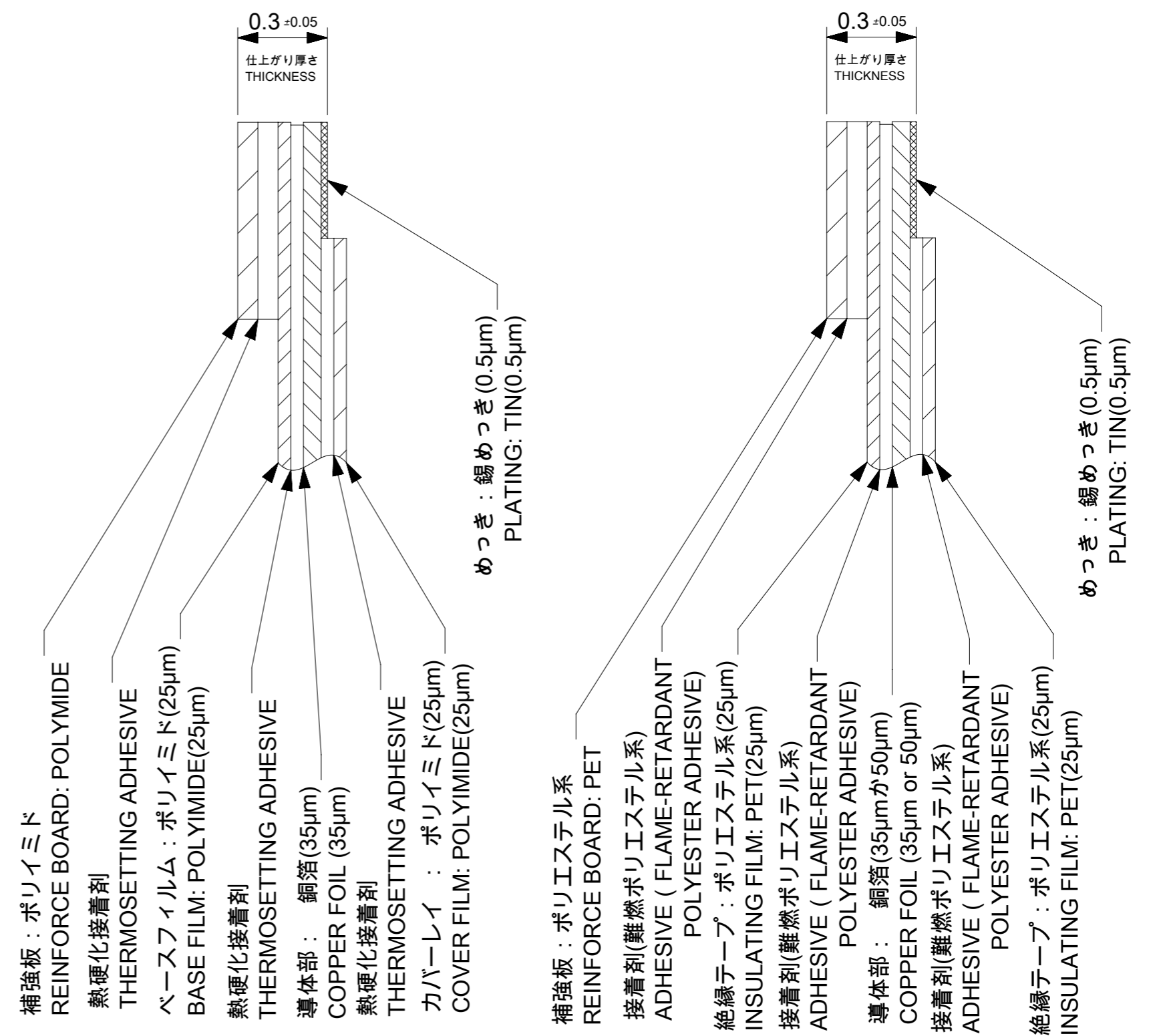




適合FPC/FFC推奨寸法  
APPLICABLE FPC/FFC  
RECOMMENDED DIMENSION



耳無し適合FPC/FFC推奨寸法  
APPLICABLE NON-TAB FPC/FFC  
RECOMMENDED DIMENSION



FPC構成推奨仕様  
STRUCTURE OF FPC

FFC構成推奨仕様  
STRUCTURE OF FFC

THIS DRAWING CONTAINS INFORMATION THAT IS PROPRIETARY TO MOLEX ELECTRONIC TECHNOLOGIES, LLC AND SHOULD NOT BE USED WITHOUT WRITTEN PERMISSION

REVISED	EC NO: 117930	GENERAL TOLERANCES (UNLESS SPECIFIED)	DIMENSION UNITS	SCALE		
	DRWN: JASANUMA	ANGULAR TOL ± 1.0 °	MM	≠		
	CHK'D: YKOBAYASHI02	4 PLACES ± 0.05	DRWN BY	DATE		MTAKAHASHI04 2015/12/24
	APPR: TKUSUHARA01	3 PLACES ± 0.1	CHK'D BY	DATE		KTAKAHASHI 2015/12/25
		2 PLACES ± 0.2	APPR BY	DATE		YNOGAWA 2016/01/04
	1 PLACE ± 0.2	DRAFT WHERE APPLICABLE MUST REMAIN WITHIN DIMENSIONS	DRAWING SIZE	THIRD ANGLE PROJECTION		
	0 PLACES ± 0.2		A3			
RELEASE STATUS	P1	RELEASE DATE	12.06.2017	07:07:21	PRODUCT CUSTOMER DRAWING	
					SERIES: 200529	
					MATERIAL NUMBER: SEE SHEET 1	
					CUSTOMER: GENERAL	
					DOCUMENT NUMBER: 2005291006	
					DOC TYPE: PSD	
					DOC PART: 000	
					SHEET NUMBER: 2 OF 3	

注記 NOTES

1.使用材料 MATERIAL

ハウジング :液晶ポリマー ガラス充填、UL94V-0(ベージュ)  
 HOUSING LIQUID CRYSTAL POLYMER GLASS FILLED, UL94V-0(BEIGE)  
 アクチュエータ :ポリアミド ガラス充填、UL94V-0(黒)  
 ACTUATOR POLYAMIDE GLASS FILLED, UL94V-0(BLACK)  
 ターミナル :リン青銅(t=0.15)  
 TERMINAL PHOSPHOR BRONZE  
 金具 :リン青銅(t=0.15)  
 FITTING NAIL PHOSPHOR BRONZE

2.めっき仕様 PLATING

ターミナル TERMINAL  
 錫銀ビスマスめっき (1.0μm以上)  
 下地:ニッケルめっき (1.0μm以上)  
 TINSILVER BISMUTH PLATING (1.0 MICROMETER MINIMUM)  
 UNDERPLATE : NICKEL OVERALL (1.0 MICROMETER MINIMUM)  
 金具 FITTING NAIL  
 錫めっき(1.0μm以上)  
 下地:ニッケルめっき (1.0μm以上)  
 TIN PLATING (1.0 MICROMETER MIN.)  
 UNDER PLATING : NICKEL PLATING (1.0 MICROMETER MIN.)

3.エンボステーブ梱包時は、アクチュエータが閉じた状態とする。  
 IN THE PACKAGE, ACTUATOR OF PART SHOULD BE CLOSED.

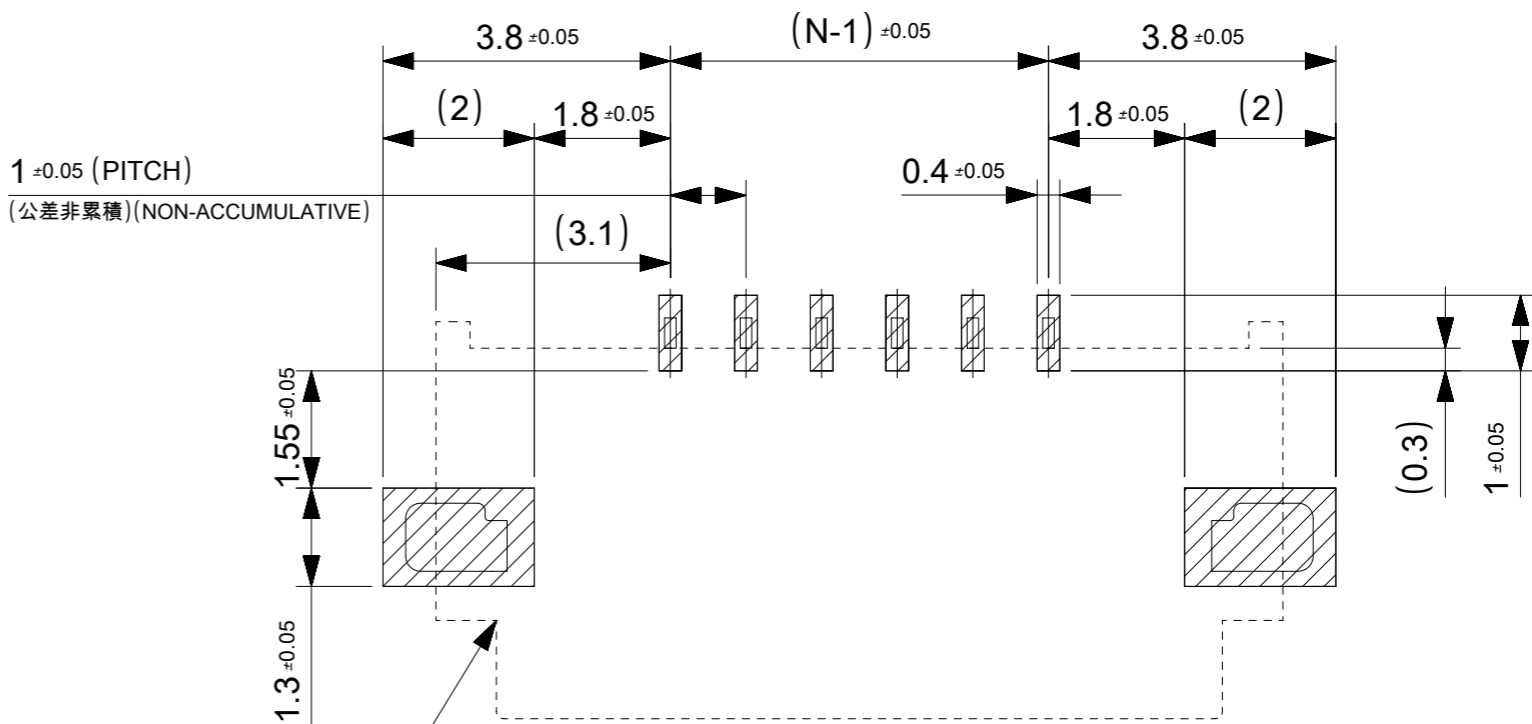
4. パターン剥離止め用金具  
 FITTING NAIL FOR PREVENTION OF PEELING OF P.C.B. PATTERN.

5. R0.3はFPC/FFC導体部にかからないこと。  
 R0.3 MUST NOT BE OVERLAPPED TO PATTERN OF FPC/FFC.

6.N:極数 N:CIRCUIT.

7.ELV及びRoHS適合品  
 ELV AND RoHS COMPLIANT

8.テールと金具を併せた平坦度は0.1以下とする。  
 TAILS AND NAILS COPLANALITY TO BE 0.1 MAX.



コネクタ位置 (CONNECTOR POSITION)

推奨基板レイアウト RECOMENDED P.W.B. PATTERN LAYOUT

参考マスク厚 : 100μm  
 参考マスク開口率 : 100%  
 REFERENCE SCREEN THICKNESS : 100μm  
 REFERENCE SCREEN OPEN RATIO : 100%

FPC/FFCについて ABOUT FPC/FFC

打ち抜き方向は導体側から補強板側を推奨します。  
 導体部については軟箔銅35μmまたは50μmを推奨します。  
 FFCに規定された定格温度がFFC単体前提である場合が御座います。  
 コネクタと組み合わせての実使用において、接着層が劣化するなどの信頼性を満足できないケースを回避するため、  
 実機での評価/確認をお願いいたします。

RECOMMENDED PUNCHING DIRECTION : FROM CONDUCTOR SIDE TO STIFFENER SIDE  
 RECOMMENDED CONDUCTOR SPEC : SOFT COPPER FOIL  
 RECOMMENDED CONDUCTOR THICKNESS : 35 MICROMETER OR 50 MICROMETER  
 WHEN ACTUALLY USING IT WITH CONNECTOR, PLEASE DO THE EVALUATION AND THE CONFIRMATION WITH AN ACTUAL EQUIPMENT TO EVADE THE CASE WHERE RELIABILITY CANNOT BE FILLED (THE ADHESIVE LINE OF FFC IS DETERIORATED ETC.)

FPCについて ABOUT FPC

補強フィルム材質はポリイミドを推奨します。ベースフィルムは25μmを推奨します。  
 接着剤は熱硬化接着剤を推奨します。  
 尚、接着剤の接点部への付着は導通不良の原因になりますので、染み出しが無い様お願い致します。  
 RECOMMENDED MATERIAL/THICKNESS.  
 RECOMMENDED STIFFENER MATERIAL: POLYIMIDE  
 RECOMMENDED BASE FILM THICKNESS: 25 MICROMETER  
 RECOMMENDED ADHESIVE: THERMOSETTING ADHESIVE  
 PLEASE PUT APPROPRIATE AMOUNT OF ADHESIVE ON ADHEREND BECAUSE THERE IS A POSSIBILITY THAT THE EXTRA ADHESIVE CAUSES THE DEFECT IN ELECTRICAL CONTINUITY.  
 THERE IS A POSSIBILITY THAT THE PRESCRIPT TEMPERATURE OF FFC IS SET TO SINGLE IT.

THIS DRAWING CONTAINS INFORMATION THAT IS PROPRIETARY TO MOLEX ELECTRONIC TECHNOLOGIES, LLC AND SHOULD NOT BE USED WITHOUT WRITTEN PERMISSION

REVISED	2017/06/09	2017/06/12	GENERAL TOLERANCES (UNLESS SPECIFIED)	DIMENSION UNITS	SCALE				
	2017/06/12	2017/06/12		MM	±±				
	EC NO: 117930 DRWN: JASANUMA CHK'D: YKOBAYASHI02 APPR: TKUSUHARA01	4 PLACES		± 0.05	DRWN BY		DATE		
		3 PLACES		± 0.1	MTAKAHASHI04		2015/12/24		
		2 PLACES		± 0.2	CHK'D BY		DATE		
1 PLACE		± 0.2	KTAKAHASHI	2015/12/25					
0 PLACES	± 0.2	APPR BY	DATE	PRODUCT CUSTOMER DRAWING					
			DRAFT WHERE APPLICABLE MUST REMAIN WITHIN DIMENSIONS	DRAWING SIZE	THIRD ANGLE PROJECTION	SERIES	MATERIAL NUMBER	CUSTOMER	
				A3		200529	SEE SHEET 1	GENERAL	
						DOCUMENT NUMBER	DOC TYPE	DOC PART	SHEET NUMBER
						2005291006	PSD	000	3 OF 3