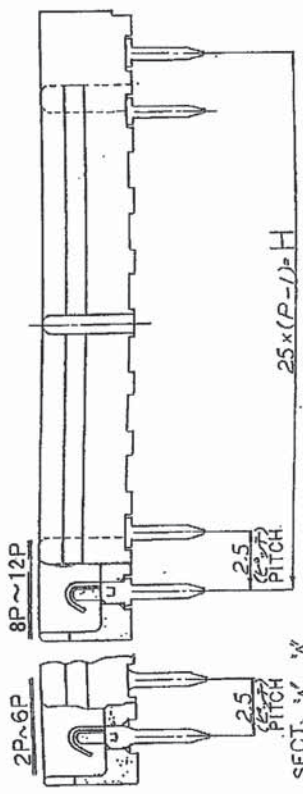
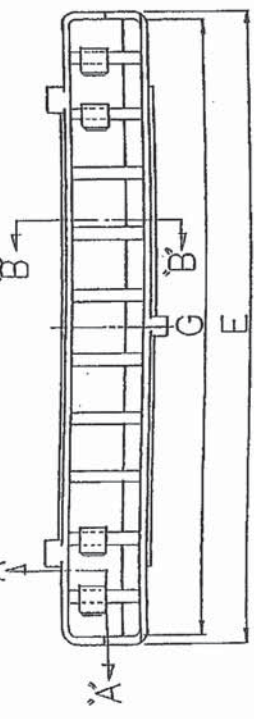
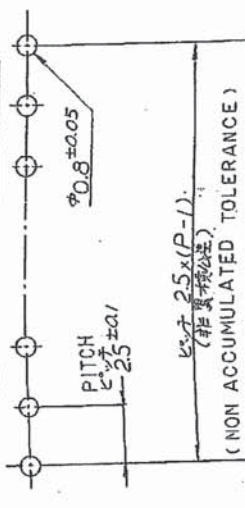


注:  $\Delta$  W寸法は以下の通り.

極数	W
7P~12P	4.7



P.C.B. LAYOUT FIG. 2  
基極孔加工寸法 FIG. 2



Pos.	A	B
2-12	4.7	2.05

ピッチ 25 x (P-1)  
(非貫通孔)

(NON ACCUMULATED TOLERANCE)

2

3

4

5

6

7

8

9

10

11

12

13

14

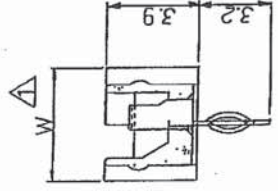
2 材料: ハウジング: PBT ガラス入り  
ポスト: 易めき清りん青銅

3 製品規格: 108-5176(圧着タイプ)、108-5177(圧接タイプ)

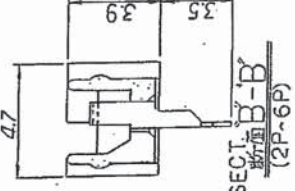
NOTES:  
 $\Delta$  "W" DIMENSION: SEE FIG. 1

2 MATERIAL: HSG; PBT GLASS FILLED  
POST: PRE-TIN PHOS BRZ

3 PRODUCT SPECIFICATION: 108-5176(CRIMP TYPE)  
108-5177(MT TYPE)



SECT. B-B'  
断面 (8P~12P)



SECT. B-B'  
断面 (2P~6P)

	15	39.0	38.1	35.0
	14	36.5	35.6	32.5
	13	34.0	33.1	30.0
	12	31.5	30.6	27.5
	11	29.0	28.1	25.0
	10	26.5	25.6	22.5
	9	24.0	23.1	20.0
	8	21.5	20.6	17.5
	7	19.0	18.1	15.0
	6	16.5	15.6	12.5
	5	14.0	13.1	10.0
	4	11.5	10.6	7.5
	3	9.0	8.1	5.0
	2	6.5	5.6	2.5
WHITE	RED	BLUE	BLACK	P
P/N AND COLOR				
	E	G	H	極数

tyco Electronics		Tyco Electronics Corporation Kawasaki, Japan	
PITCH SPRING POST ASSY (V-TYPE)		2.5mm ピッチ スプリングポスト アッセンブリ(圧着型)	
SIZE	A3 J1	LOC	319 (M03)
REV. NO.	1	DATE	1978.05.18
DESIGNED BY	Y. S. H.	CHECKED BY	Y. S. H.
DRAWN BY	Y. S. H.	APPROVED BY	Y. S. H.
DATE	1978.05.18	SCALE	1:1
FIG. NO.	51	REV.	F
C-172681		SHEET 1/1	