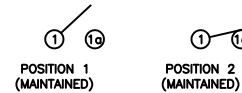


SCHEMATIC



SPECIFICATIONS

**FUNCTION:**  
1P1T OFF-ON

**RATINGS:**  
ANSI/UL 1054 and CAN/CSA C22.2 No. 55 (E194579):  
10A 125VAC [UR, cUR]  
EN 61058-1:2002:  
6A 250V~ μ 1E4 T85 [ENEC14]

**CONTACT RESISTANCE:**  
Initial: 35mΩ Max. at 50VAC

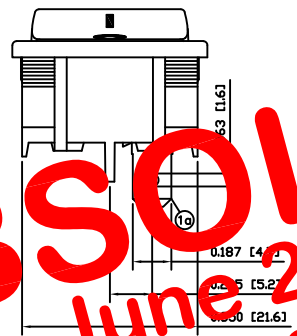
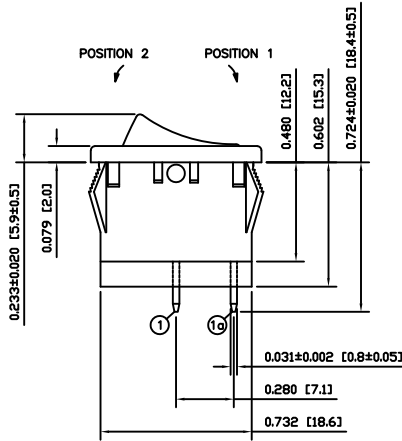
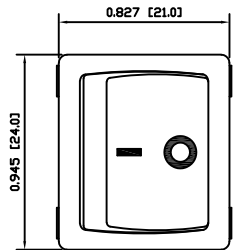
**INSULATION RESISTANCE:**  
100MΩ Min. at 500VDC

**DIELECTRIC STRENGTH:**  
1,500VAC For 1 Minute

**ELECTRICAL LIFE:**  
6,000 Cycles [UR, cUR]  
10,000 Cycles [ENEC14]

**TEMPERATURE:**  
Operating: -20°C to 105°C [UR, cUR]  
Operating: -20°C to 85°C [ENEC14]

**APPROVALS:**



**OBSOLETE**  
 June 2018  
 PCR 23427

COLORS AND MARKINGS

**BODY:**  
Black

**ACTUATOR:**  
Black

**MARKING:**  
1/O Vertical (1)

**MARKING COLOR:**  
White

MATERIALS

**BODY:**  
Polyamide 6/6 (PA66), UL94 V-2

**ACTUATOR:**  
Polyamide 6/6 (PA66), UL94 V-2

**SPRING:**  
Steel

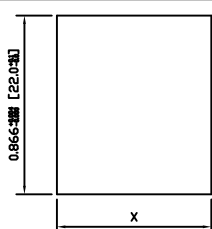
**BALL:**  
Steel

**MOBILE CONTACT:**  
Silver Alloy

**CONTACTS:**  
Silver Alloy

**TERMINALS:**  
Silver Plated Copper

SUGGESTED PANEL CUTOUT



PANEL THICKNESS	X
0.030~0.049 [0.75~1.25]	0.756 [19.2]
0.049~0.079 [1.25~2.00]	0.764 [19.4]
0.079~0.118 [2.00~3.00]	0.772 [19.6]

ACTUATOR	A	09/09/17	CAB
BODY	A	09/09/17	CAB
COLORS	A	09/09/17	CAB
MATERIALS	A	09/09/17	CAB
SPECIFICATIONS	A	09/09/17	CAB
REFERENCE	REV.	DATE	BY

THE INFORMATION CONTAINED IN THIS DOCUMENT IS PROPRIETARY TO E-SWITCH-LAMB INDUSTRIES AND IS NOT TO BE COPIED OR TRANSFERRED

INITIAL RELEASE	PCRD0227	09/12/08	CAB
DESCRIPTION	PCR	DATE	DRAWN BY

DIMENSIONS
INCHES [MILLIMETERS]
GENERAL TOLERANCES
±0.008 [±0.2] / ±1'

RA41131121				
SCALE	PROJECTION	DRAWING NUMBER	DATE	REVISION
DRAWING NOT TO SCALE		38-RA41131121	DECEMBER 8, 2009	A