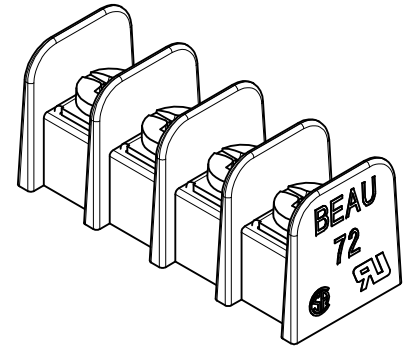
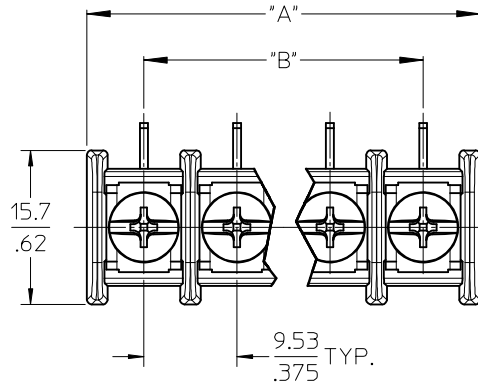
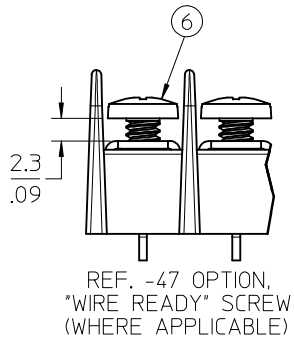


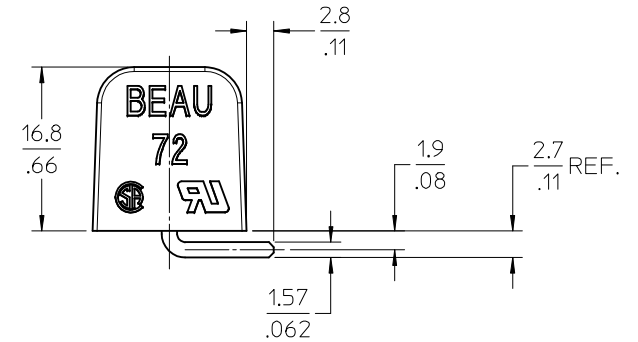
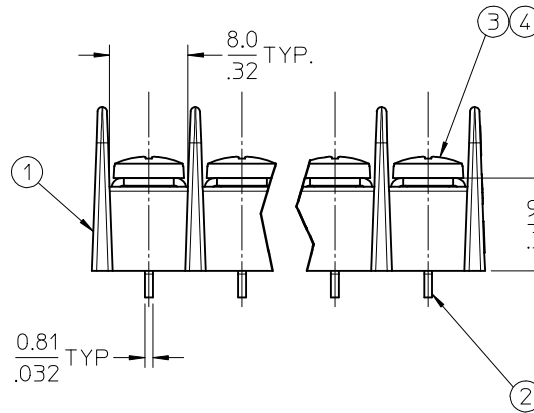
REF. -50 OPTION,
CLAMP WASHER SCREW
(WHERE APPLICABLE)



4 CIRCUIT SHOWN



REF. -47 OPTION,
"WIRE READY" SCREW
(WHERE APPLICABLE)



NOTES:

1. MATERIAL: SEE TABLE
2. FINISHES: SEE TABLE
3. "XX" REFERS TO THE QUANTITY OF CIRCUITS.
4. UL FILE# E48521, SEE SHEET 2.
5. CSA FILE# 025562, SEE SHEET 2.
6. INSULATOR IS UL 94 V-0
7. ALL COMPONENTS ARE ROHS COMPLIANT.

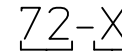
| | | | | | | | | | | | |
|------|------|---|-------------|--------------------|--|-------------------------------|---|---|--|---|---------------------|
| 6 | XX | SCREW #6-32 BHD, PH-SL, WRDY (-47 OPT) | STEEL | ZN, CLEAR CHROMATE | FILE SAVE CHG ONLY EC NO: WNA2010-0237 DT: DRW:NYC/CLYORK 2009/10/01 CHKD:DTITUS 2009/10/02 APPR:DTITUS 2009/10/05 REV DESCRIPTION | QUALITY SYMBOLS ▽=0 ▽=0 | GENERAL TOLERANCES (UNLESS SPECIFIED) mm INCH 4 PLACES ± --- ± --- 3 PLACES ± --- ± .005 2 PLACES ± 0.13 ± .01 1 PLACE ± 0.25 ± --- ANGULAR ± 2 ° | DIMENSION STYLE MM/IN DRAWN BY DATE C. YORK 2006/02/08 CHECKED BY DATE RDEROSS 2006/02/08 APPROVED BY DATE DTITUS 2009/10/02 | SCALE 2:1 DESIGN UNITS INCH THIRD ANGLE PROJECTION | TITLE 9.53/.375 SR BTS ASY, PC RA, NO MTG | |
| 5 | XX | SCREW&WASHER #6-32 PAN, PH-SL (-50 OPT) | STEEL | ZN, CLEAR CHROMATE | | | | | | | |
| 4 | XX | SCREW #6-32 BHD, PHIL-SLOT (-49 OPT) | BRASS | NICKEL PLATE | | | | | | | |
| 3 | XX | SCREW #6-32 BHD, PHIL-SLOT (STD.) | STEEL | ZN, CLEAR CHROMATE | | | | | | | |
| 2 | XX | TERMINAL, WW | BRASS | TIN PLATE | | | | | | | |
| 1 | 1 | INSULATOR, SR, NO MTG. | PBT, 30% GF | BLACK | | | | | | | |
| ITEM | QTY. | DESCRIPTION | MATERIAL | FINISH | | | DRAFT WHERE APPLICABLE MUST REMAIN WITHIN DIMENSIONS | | MATERIAL NO. SEE CHART | DOCUMENT NO. SD-38721-001 | SHEET NO. 1 OF 2 |

| NUMBER OF CIRCUITS "XX" | DIM. "A" | | DIM. "B" | | MATERIAL NO. WITH STD. SCREW (-C OPT.) | MATERIAL NO. WITH WIRE READY SCREW (-C-47 OPT.) | MATERIAL NO. WITH BRASS SCREW (-C-49 OPT.) | MATERIAL NO. W/CLAMP-WASHER SCREW (-C-50 OPT.) | UL & CSA REFERENCE NUMBER |
|-------------------------|----------|--------|----------|---------|--|---|--|--|---------------------------|
| 02 | 21.1 | [.83] | 9.53 | [.375] | 38721-5302 | 38721-6202 | 38721-5602 | 38721-5902 | 72 |
| 03 | 30.7 | [1.21] | 19.05 | [.750] | 38721-5303 | 38721-6203 | 38721-5603 | 38721-5903 | 72 |
| 04 | 40.1 | [1.58] | 28.58 | [1.125] | 38721-5304 | 38721-6204 | 38721-5604 | 38721-5904 | 72 |
| 05 | 49.8 | [1.96] | 38.10 | [1.500] | 38721-5305 | 38721-6205 | 38721-5605 | 38721-5905 | 72 |
| 06 | 59.2 | [2.33] | 47.63 | [1.875] | 38721-5306 | 38721-6206 | 38721-5606 | 38721-5906 | 72 |
| 07 | 68.8 | [2.71] | 57.15 | [2.250] | 38721-5307 | 38721-6207 | 38721-5607 | 38721-5907 | 72 |
| 08 | 78.3 | [3.08] | 66.68 | [2.625] | 38721-5308 | 38721-6208 | 38721-5608 | 38721-5908 | 72 |
| 09 | 87.8 | [3.46] | 76.20 | [3.000] | 38721-5309 | 38721-6209 | 38721-5609 | 38721-5909 | 72 |
| 10 | 97.3 | [3.83] | 85.73 | [3.375] | 38721-5310 | 38721-6210 | 38721-5610 | 38721-5910 | 72 |
| 11 | 106.9 | [4.21] | 95.25 | [3.750] | 38721-5311 | 38721-6211 | 38721-5611 | 38721-5911 | 72 |
| 12 | 116.3 | [4.58] | 104.78 | [4.125] | 38721-5312 | 38721-6212 | 38721-5612 | 38721-5912 | 72 |
| 13 | 126.0 | [4.96] | 114.30 | [4.500] | 38721-5313 | 38721-6213 | 38721-5613 | 38721-5913 | 72 |
| 14 | 135.3 | [5.33] | 123.83 | [4.875] | 38721-5314 | 38721-6214 | 38721-5614 | 38721-5914 | 72 |
| 15 | 145.0 | [5.71] | 133.35 | [5.250] | 38721-5315 | 38721-6215 | 38721-5615 | 38721-5915 | 72 |
| 16 | 154.4 | [6.08] | 142.88 | [5.625] | 38721-5316 | 38721-6216 | 38721-5616 | 38721-5916 | 72 |
| 17 | 164.1 | [6.46] | 152.40 | [6.000] | 38721-5317 | 38721-6217 | 38721-5617 | 38721-5917 | 72 |
| 18 | 173.5 | [6.83] | 161.93 | [6.375] | 38721-5318 | 38721-6218 | 38721-5618 | 38721-5918 | 72 |
| 19 | 183.1 | [7.21] | 171.45 | [6.750] | 38721-5319 | 38721-6219 | 38721-5619 | 38721-5919 | 72 |
| 20 | 192.5 | [7.58] | 180.98 | [7.125] | 38721-5320 | 38721-6220 | 38721-5620 | 38721-5920 | 72 |
| 21 | 202.2 | [7.96] | 190.50 | [7.500] | 38721-5321 | 38721-6221 | 38721-5621 | 38721-5921 | 72 |
| 22 | 211.6 | [8.33] | 200.03 | [7.875] | 38721-5322 | 38721-6222 | 38721-5622 | 38721-5922 | 72 |
| 23 | 221.2 | [8.71] | 209.55 | [8.250] | 38721-5323 | 38721-6223 | 38721-5623 | 38721-5923 | 72 |
| 24 | 230.6 | [9.08] | 219.08 | [8.625] | 38721-5324 | 38721-6224 | 38721-5624 | 38721-5924 | 72 |
| 25 | 240.3 | [9.46] | 228.60 | [9.000] | 38721-5325 | 38721-6225 | 38721-5625 | 38721-5925 | 72 |
| 26 | 249.6 | [9.83] | 238.13 | [9.375] | 38721-5326 | 38721-6226 | 38721-5626 | 38721-5926 | 72 |



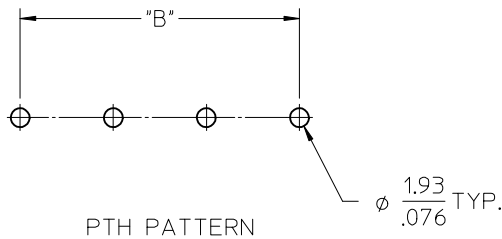
NOTES:

- 1 FOR UL OR CSA FILE, USE UL & CSA REFERENCE NO. PROVIDED IN CHART ALONG WITH THE INSTRUCTIONS BELOW.
- 2 FOR ASSEMBLY WITH CLAMP-WASHER SCREW, ADD -50 TO THE UL & CSA REFERENCE NO.



SERIES _____ OPTIONS (WHERE APPLICABLE)

UL & CSA FILE INSTRUCTIONS



| | | | | | | | | | | | | | |
|--|-----------------------|-------------------|-------------------------------|--|--|--------------------|--|---|--------------|--|--|--|--|
| UPDATE TABLE EC NO: WNA2010-0237 DRAWN: C. YORK 2009/10/01 CHKD: DTITUS 2009/10/02 APPR: DTITUS 2009/10/05 | DESCRIPTION DTITUS | REV | QUALITY SYMBOLS ▽=0 ▽=0 | GENERAL TOLERANCES (UNLESS SPECIFIED) | | DIMENSION STYLE | | SCALE | DESIGN UNITS | THIRD ANGLE PROJECTION | | | |
| | | | | | | MM/IN | | 2:1 | INCH | 9.53/.375 SR BTS ASY, PC RA, NO MTG | | | |
| | | | | | | DRAWN BY DATE | | CHECKED BY DATE | | Molex MOLEX INCORPORATED DOCUMENT NO. SD-38721-001 SHEET NO. 2 OF 2 | | | |
| | | | | | | C. YORK 2006/02/08 | | RDEROSS 2006/02/08 | | | | | |
| | | APPROVED BY DATE | | MATERIAL NO. | | SEE CHART | | THIS DRAWING CONTAINS INFORMATION THAT IS PROPRIETARY TO MOLEX INCORPORATED AND SHOULD NOT BE USED WITHOUT WRITTEN PERMISSION | | | | | |
| | | DTITUS 2009/10/02 | | DTITUS 2009/10/02 | | ANGULAR ± 2 ° | | | | | | | |
| | | | | DRAFT WHERE APPLICABLE MUST REMAIN WITHIN DIMENSIONS | | | | | | | | | |