

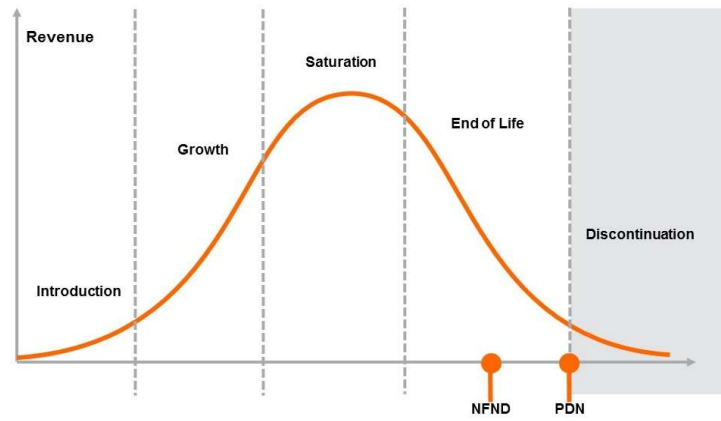
Light is OSRAM

Product Or Individual Q-Code Discontinuation (acc. JEDEC J-STD-048)

03 August 2020

OS-PDN-2020-039

| | |
|----------------|------------------|
| Last order: | 01 February 2021 |
| Last delivery: | 01 August 2021 |



Please direct your feedback to your local Sales office.

| DISCONTINUED | | | | NEW (REPLACEMENT) | | |
|--------------|---------------|--------------|--|-------------------|-------------------------|--------------|
| Device | Ordering Code | Brand | Reason for discontinuation | Device | Datasheet Ordering Code | Brand |
| LB E6SG | Q65110A5777 | Power TOPLED | Brightness increase – dim selections need to be phased-out | LB E6SG | Q65113A1394 | Power TOPLED |
| LB E6SG | Q65110A6728 | Power TOPLED | Brightness increase – dim selections need to be phased-out | LB E6SG | Q65113A1394 | Power TOPLED |
| LB E6SG | Q65110A8307 | Power TOPLED | Brightness increase – dim selections need to be phased-out | LB E6SG | Q65113A1394 | Power TOPLED |
| LB E6SG | Q65111A2673 | Power TOPLED | Brightness increase – dim selections need to be phased-out | LB E6SG | Q65113A1394 | Power TOPLED |
| LB TTSD | Q65111A4061 | TOPLED | Brightness increase – dim selections need to be phased-out | LB TTSD | Q65113A0874 | TOPLED |
| LB TTSD | Q65111A5027 | TOPLED | Brightness increase – dim selections need to be phased-out | LB TTSD | Q65113A0874 | TOPLED |
| LB TTSD | Q65111A6533 | TOPLED | Brightness increase – dim selections need to be phased-out | LB TTSD | Q65113A0874 | TOPLED |
| LB TTSD | Q65111A6788 | TOPLED | Brightness increase – dim selections need to be phased-out | LB TTSD | Q65113A0874 | TOPLED |
| LB TTSD | Q65111A6919 | TOPLED | Brightness increase – dim selections need to be phased-out | LB TTSD | Q65113A0874 | TOPLED |
| LB TTSD | Q65111A8398 | TOPLED | Brightness increase – dim selections need to be phased-out | LB TTSD | Q65113A0874 | TOPLED |
| LB TTSD | Q65111A8703 | TOPLED | Brightness increase – dim selections need to be phased-out | LB TTSD | Q65113A0874 | TOPLED |
| LB TTSD | Q65112A3033 | TOPLED | Brightness increase – dim selections need to be phased-out | LB TTSD | Q65113A0874 | TOPLED |
| LB TTSD | Q65112A5405 | TOPLED | Brightness increase – dim selections need to be phased-out | LB TTSD | Q65113A0874 | TOPLED |
| LCB E6SG | Q65111A0090 | Power TOPLED | Brightness increase – dim selections need to be phased-out | LCB E6SG | Q65113A1056 | Power TOPLED |
| LCB E6SG | Q65111A1944 | Power TOPLED | Brightness increase – dim selections need to be phased-out | LCB E6SG | Q65113A1056 | Power TOPLED |
| LCB E6SG | Q65111A6728 | Power TOPLED | Brightness increase – dim selections need to be phased-out | LCB E6SG | Q65113A1056 | Power TOPLED |
| LCB E6SG | Q65111A8153 | Power TOPLED | Brightness increase – dim selections need to be phased-out | LCB E6SG | Q65113A1055 | Power TOPLED |
| LCB E6SG | Q65112A1611 | Power TOPLED | Brightness increase – dim selections need to be phased-out | LCB E6SG | Q65113A1056 | Power TOPLED |
| LCB E6SG | Q65113A0394 | Power TOPLED | Brightness increase – dim selections need to be phased-out | LCB E6SG | Q65113A1055 | Power TOPLED |
| LT E6SG | Q65110A5790 | Power TOPLED | Brightness increase – dim selections need to be phased-out | LT E6SG | Q65113A1343 | Power TOPLED |
| LT TTSD | Q65111A6528 | TOPLED | Efficacy increase - high Uf selections need to be phased out | LT TTSD | Q65113A0864 | TOPLED |
| LT TTSD | Q65111A6784 | TOPLED | Brightness increase – dim selections need to be phased-out | LT TTSD | Q65113A0864 | TOPLED |
| LT TTSD | Q65111A7528 | TOPLED | Brightness increase – dim selections need to be phased-out | LT TTSD | Q65113A0873 | TOPLED |
| LT TTSD | Q65112A0088 | TOPLED | Brightness increase – dim selections need to be phased-out | LT TTSD | Q65113A0864 | TOPLED |
| LT TTSD | Q65112A7382 | TOPLED | Efficacy increase - high Uf selections need to be phased out | LT TTSD | Q65113A0864 | TOPLED |
| LW T6SG | Q65111A2022 | TOPLED | Brightness increase – dim selections need to be phased-out | LW T6SG | Q65113A1045 | TOPLED |
| LW T6SG | Q65111A2041 | TOPLED | Brightness increase – dim selections need to be phased-out | LW T6SG | Q65113A1045 | TOPLED |
| LW T6SG | Q65111A3491 | TOPLED | Brightness increase – dim selections need to be phased-out | LW T6SG | Q65113A1045 | TOPLED |
| LW T6SG | Q65111A3492 | TOPLED | Brightness increase – dim selections need to be phased-out | LW T6SG | Q65113A1045 | TOPLED |
| LW T6SG | Q65111A8865 | TOPLED | Brightness increase – dim selections need to be phased-out | LW T6SG | Q65113A1045 | TOPLED |

| DISCONTINUED | | | | NEW (REPLACEMENT) | | |
|--------------|---------------|--------|--|-------------------|-------------------------|--------|
| Device | Ordering Code | Brand | Reason for discontinuation | Device | Datasheet Ordering Code | Brand |
| LW TTSD | Q65111A0300 | TOPLED | Brightness increase – dim selections need to be phased-out | LW TTSD | Q65113A0873 | TOPLED |
| LW TTSD | Q65111A2856 | TOPLED | Brightness increase – dim selections need to be phased-out | LW TTSD | Q65113A1043 | TOPLED |
| LW TTSD | Q65111A3591 | TOPLED | Brightness increase – dim selections need to be phased-out | LW TTSD | Q65113A1043 | TOPLED |
| LW TTSD | Q65111A3711 | TOPLED | Brightness increase – dim selections need to be phased-out | LW TTSD | Q65113A0873 | TOPLED |
| LW TTSD | Q65111A3918 | TOPLED | Brightness increase – dim selections need to be phased-out | LW TTSD | Q65113A1043 | TOPLED |
| LW TTSD | Q65111A4888 | TOPLED | Brightness increase – dim selections need to be phased-out | LW TTSD | Q65113A0873 | TOPLED |
| LW TTSD | Q65111A5501 | TOPLED | Brightness increase – dim selections need to be phased-out | LW TTSD | Q65113A0873 | TOPLED |
| LW TTSD | Q65111A5722 | TOPLED | Brightness increase – dim selections need to be phased-out | LW TTSD | Q65113A1043 | TOPLED |
| LW TTSD | Q65111A6212 | TOPLED | Brightness increase – dim selections need to be phased-out | LW TTSD | Q65113A1043 | TOPLED |
| LW TTSD | Q65111A6213 | TOPLED | Brightness increase – dim selections need to be phased-out | LW TTSD | Q65113A1043 | TOPLED |
| LW TTSD | Q65111A6314 | TOPLED | Brightness increase – dim selections need to be phased-out | LW TTSD | Q65113A1043 | TOPLED |
| LW TTSD | Q65111A6472 | TOPLED | Brightness increase – dim selections need to be phased-out | LW TTSD | Q65113A0873 | TOPLED |
| LW TTSD | Q65111A6473 | TOPLED | Brightness increase – dim selections need to be phased-out | LW TTSD | Q65113A0873 | TOPLED |
| LW TTSD | Q65111A7020 | TOPLED | Brightness increase – dim selections need to be phased-out | LW TTSD | Q65113A0873 | TOPLED |
| LW TTSD | Q65111A7219 | TOPLED | Brightness increase – dim selections need to be phased-out | LW TTSD | Q65113A1043 | TOPLED |
| LW TTSD | Q65111A7812 | TOPLED | Brightness increase – dim selections need to be phased-out | LW TTSD | Q65113A1043 | TOPLED |
| LW TTSD | Q65111A7991 | TOPLED | Brightness increase – dim selections need to be phased-out | LW TTSD | Q65113A0873 | TOPLED |
| LW TTSD | Q65111A8737 | TOPLED | Brightness increase – dim selections need to be phased-out | LW TTSD | Q65113A0873 | TOPLED |
| LW TTSD | Q65111A9998 | TOPLED | Brightness increase – dim selections need to be phased-out | LW TTSD | Q65113A0873 | TOPLED |
| LW TTSD | Q65112A0084 | TOPLED | Brightness increase – dim selections need to be phased-out | LW TTSD | Q65113A0873 | TOPLED |
| LW TTSD | Q65112A1980 | TOPLED | Brightness increase – dim selections need to be phased-out | LW TTSD | Q65113A1043 | TOPLED |
| LW TTSD | Q65112A4302 | TOPLED | Brightness increase – dim selections need to be phased-out | LW TTSD | Q65113A1043 | TOPLED |
| LW TTSD | Q65112A5266 | TOPLED | Brightness increase – dim selections need to be phased-out | LW TTSD | Q65113A0873 | TOPLED |
| LW TTSD | Q65112A5595 | TOPLED | Brightness increase – dim selections need to be phased-out | LW TTSD | Q65113A1043 | TOPLED |
| LW TTSD | Q65112A8157 | TOPLED | Brightness increase – dim selections need to be phased-out | LW TTSD | Q65113A1043 | TOPLED |
| LW TTSD | Q65112A8663 | TOPLED | Brightness increase – dim selections need to be phased-out | LW TTSD | Q65113A0873 | TOPLED |