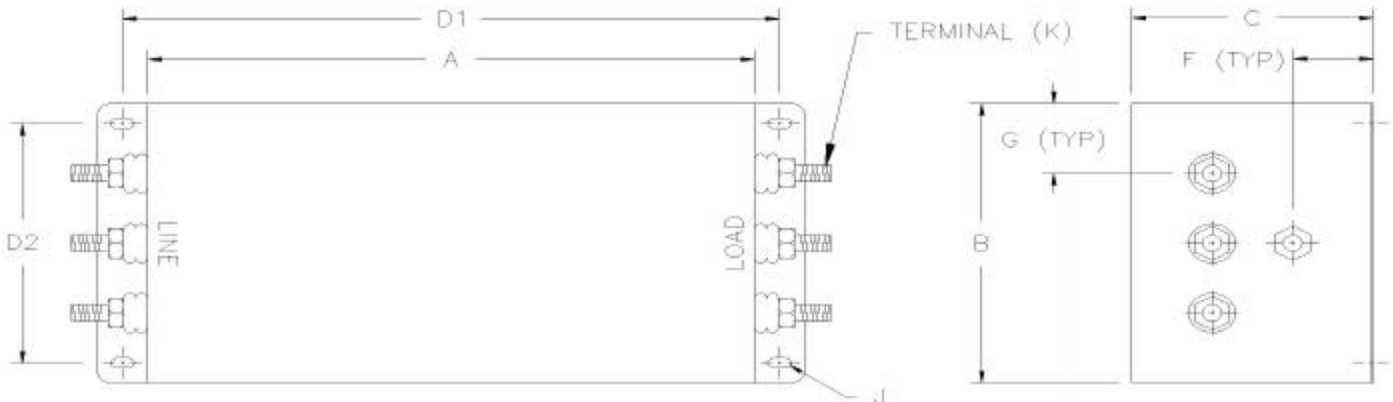


THREE PHASE DELTA, 480VAC, FILTERS, DE SERIES



FEATURES AND SPECIFICATIONS

LR46611



SPECIFICATIONS

1.0 HIGHPOT RATING:

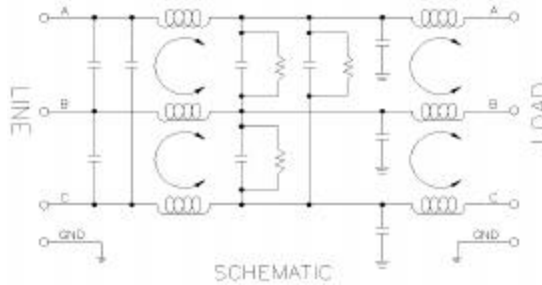
LINE-TO-GROUND: 2000 VAC

LINE-TO-LINE: 2160 VDC

2.0 MAXIMUM LEAKAGE CURRENT, EACH LINE TO GROUND. @ 480 VAC, 60 Hz: 2.50 mA max

3.0 PERFORMANCE

	0.05	0.15	0.50	1.50	5.00	20.0	30.0
C/M L/G	10 dB	50 dB	55 dB	65 dB	65 dB	65 dB	65 dB
D/M L/L	20 dB	50 dB	50 dB	60 dB	60 dB	60 dB	60 dB



4.0 RATED VOLTAGES AND FREQUENCY: 480 VAC, 47-63 Hz

PART NUMBER	RATED CURRENT	5.0 DIMENSIONS (INCHES)									
		A	B	C	D1	D2	F	G	J	K	
DE3-4FF	3A	5.00	4.00	4.00	5.81	3.25	1.33	1.00	.18 X .37	#8-32 UNC	
DE5-4FF	5A	7.00	4.00	4.00	7.81	3.25	1.33	1.00	.18 X .37	#8-32 UNC	
DE10-4FF	10A	7.00	4.00	4.00	7.81	3.25	1.33	1.00	.18 X .37	#8-32 UNC	
DE20-4FF	20A	7.00	4.00	4.00	7.81	3.25	1.33	1.00	.18 X .37	#8-32 UNC	
DE30-4FF	30A	8.00	5.00	4.75	9.00	4.00	1.58	1.25	.25 X .50	#10-32 UNC	
DE45-4FF	45A	11.00	5.00	4.75	12.00	4.00	1.58	1.25	.31 X .62	#1/4-20 UNC	
DE60-4FF	60A	12.00	6.50	4.75	13.00	5.50	1.58	1.63	.31 X .62	#1/4-20 UNC	
DEC60-4FF	60A	12.00	6.50	4.75	13.00	5.50	1.58	1.63	.31 X .62	#1/4-20 UNC	
DE100-4FF	100A	12.00	6.50	4.75	13.00	5.50	1.58	1.63	.31 X .62	#3/8-16 UNC	
DE150-4FF	150A	12.00	7.50	5.75	13.00	5.25	1.92	1.88	.31 X .62	#3/8-16 UNC	
DE200-4FF	200A	16.00	7.50	5.75	17.00	5.25	1.92	1.88	.31 X .62	#3/8-16 UNC	

6.0 FEATURES

- * RUGGED CONSTRUCTION
- * REDUCES RADIATED EMISSIONS FROM VARIABLE FREQUENCY DRIVES
- * REDUCES CONDUCTED EMISSIONS FROM VARIABLE FREQUENCY DRIVES