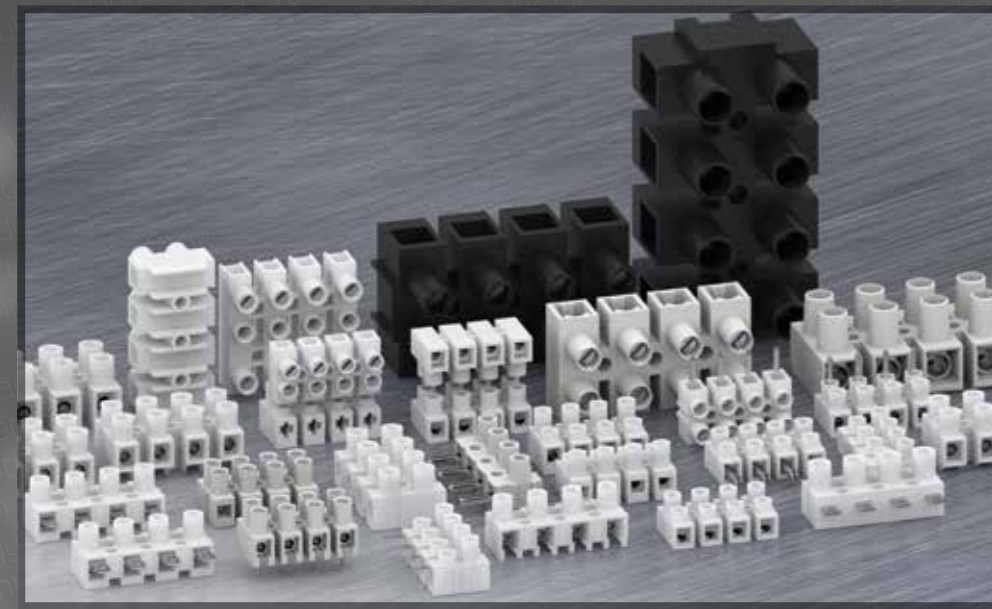


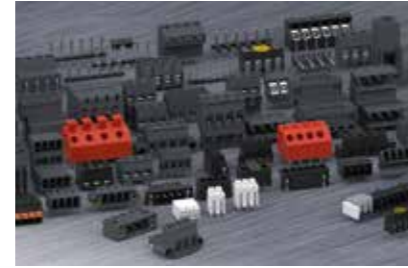


# Terminal Strips

PRODUCT SELECTION GUIDE



## Overview



### Connectors for Printed Circuit Boards

WECO PCB connectors are available in socket terminal style with either elevator clamping mechanism or head contact, as well as additional configurations with tab connectors or as screwless connector systems. Plug connectors are specially designed for peripheral devices.



### Plug-In connector systems

WECO plug-in connector systems are either screw or screwless. Corresponding pin strips are available for the plug-in connectors. Both components of these connector systems are available in different grid dimensions, optionally with lateral flange versions, as tier variants as well as in different mating directions.



### SMD & THR

Our connection systems are available for both Surface Mount Technology (SMT) and Through-Hole-Technology (THR) in reflow soldering for higher temperature resistance. WECO's SMD and THR products are trademarked under



a unique patented technology available in either Tape-on-Reel or bar magazine for automated assembly processes.



### Terminal strips

This family includes terminal strips offered in screw, soldered, with plug or screwless connection. They are available in multiple pole sizes, pitch and accommodate wire from 1.5 mm<sup>2</sup> (14 AWG) to 35 mm<sup>2</sup> (2 AWG) and capable of handling current up to 115 Amps. Housings are polyamide plastic material and meet the ball pressure test at 125°C according to VDE 0470, a key requirement in many IEC and VDE regulations for insulators.



### Tab connectors

These connectors allow for quick connections to "tab receptacles" commonly used in HVAC and field installation. WECO offers a multitude of sizes and configurations such as Multi-Point Tab Connections including tab/solder connections, flat plug coupler and space saving Tiered version offering increased connection density.



### Ceramic Terminal Blocks

This family encompasses mantle terminals, ceramic terminal strips and terminals withstand high temperatures, are immune to humidity and corrosion resistant. They are available in multiple configurations and sizes and are designed for currents up to 160 A, depending on the series. Key applications are in intrinsically safe electrical equipment used in furnaces, ovens, engines, and shipbuilding.

## Who we are ...



## Connecting Industries for over 100 Years!

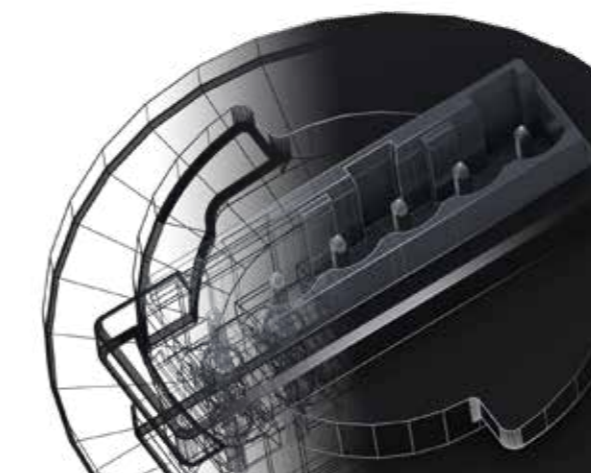
We are an engineering based company specialized in developing, manufacturing and optimizing electrical connection solutions for the energy, industrial, electrical, and electronic markets.

Founded 1921 in Germany, we are a global company headquartered in Montreal, Canada, with sales and manufacturing sites in seven key locations around the world.

We provide excellent value to our customers by developing, enhancing, and tailoring our connectors to their needs.

We strive to get it right the first time, every time, through continuous process improvement and fostering business relationships with customers.

Our streamlined manufacturing production delivers components that offer superior reliability, reduced footprint, and compact designs. These advantages have resulted in reduced lead times and greater efficiency, creating greater return on investment for the end user.



## We are global ...

### CANADA & NORTH AMERICA

GLOBAL HEADQUARTER  
WECO Electrical Connectors Inc.  
18 050 Trans-Canada Highway  
Kirkland, QC Canada H9J 4A1  
Phone: +1 514 694-9136  
Fax: +1 514 694-0956  
salesnorthamerica@wecoconnectors.com  
www.wecoconnectors.com

### EMEIA

WECO Contact GmbH  
Donaustrasse 15  
63452 Hanau, Germany  
Phone: +49 6181 105 -145  
Fax: +49 6181 105 -720  
salesemeia@wecoconnectors.com  
www.wecoconnectors.com

### BRAZIL

WECO do Brasil LTDA.  
Rua Edvino Antônio Deboni 225 Galpão 38  
CEP 81.330-600  
Curitiba, Brasil  
Phone: +55 41 3278-9720  
salesbrazil@wecoconnectors.com  
www.wecoconnectors.com

### LATIN AMERICA

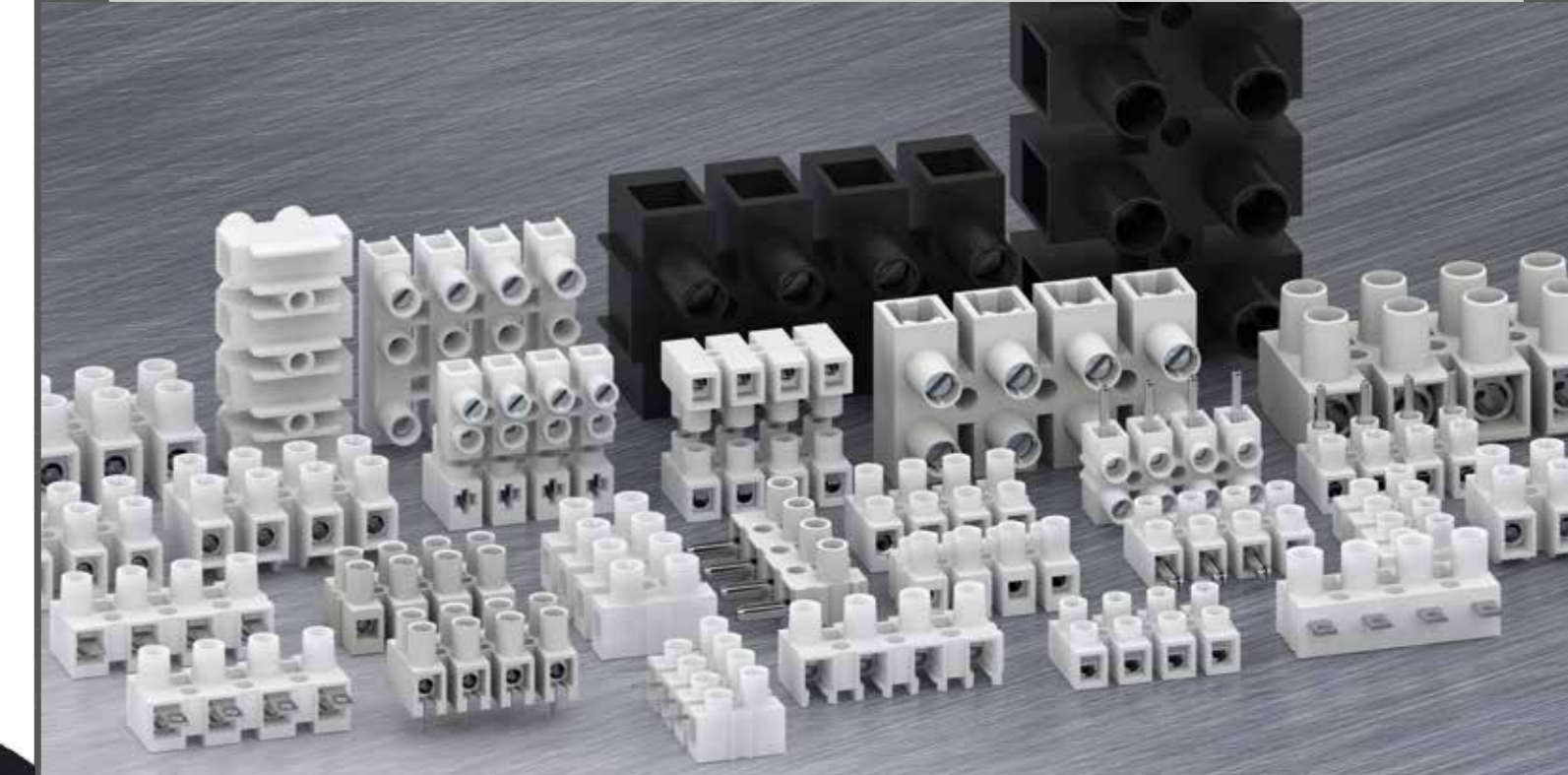
WECO de México SA CV  
Av. Vicente Guerrero #76  
Col. Agua Blanca Industrial  
Zapopan,  
Jalisco, C.P. 45235, México  
Phone: +52 33 3684 9066  
Phone: +52 33 3804 0094  
Fax: +52 33 3684 9066  
saleslatam@wecoconnectors.com  
www.wecoconnectors.com

### ASIA PACIFIC

WECO Electrical (Shenzhen) Ltd.  
Room 909A, North Block,  
Cangsong Building, Tairan 6th Road,  
Chegongmiao, Futian district,  
Shenzhen 518040, China  
Phone: +86 755 8280 7672 -0  
Fax: +86 755 8280 7674  
salesasia@wecoconnectors.com  
www.wecoconnectors.com

### ASIA PACIFIC

WECO Electrical Connectors Ltd.  
Room 1105, New Commerce Centre  
19 On Sum Street, Shatin  
New Territory, Hong Kong  
Phone: +852 2636 6252  
Fax: +852 2559 3161  
salesasia@wecoconnectors.com  
www.wecoconnectors.com



wecoconnectors.com

© 2022 by WECO.  
WECO® is a registered trademark.  
Information provided in this document may be changed without prior notice.  
Product Selection Guide "Terminal Strips" | 54 955 102 | EN | 04.05.2022



# Terminal Strips

SELECTION (ORDER BY PITCH)

For more detailed product information, refer to the technical datasheets available on our website at [wecoconnectors.com](http://wecoconnectors.com)

8.0 mm

**302-HDS**



**302-LF-DS**



**302-NFLW-DS**



**302-NSTB-DS**



10 mm

**302-STB-DS**



**321-LFS-DS**



**322-FBG**



**322-STFS-DS**



**322-SVW-DS**



**323-FBW-DS**



**323-N-HDS**



11.5 mm

**323-V-HDS**

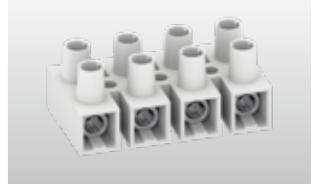


**324-FU-HDS**



14.5 mm

**326-HDS**



17.5 mm / 22 mm

**328**



|                           |   |  |   |  |   |   |   |  |  |  |  |   |   |   |   |   |   |   |
|---------------------------|---|--|---|--|---|---|---|--|--|--|--|---|---|---|---|---|---|---|
| Pitch                     | 8 mm  | 8 mm   | 8 mm  | 8 mm   | 8 mm  | 10 mm   | 10 mm   | 10 mm  | 10 mm  | 10 mm  | 10 mm  | 10 mm   | 10 mm   | 11,5 mm                                     | 11,5 mm                                     | 14,5 mm                                     | 14,5 mm                                     | 17,5 mm                                     |
| Available number of poles | 1 - 12                                      | 1 - 12   | 2 - 12  | 2 - 12   | 2 - 12  | 1 - 12  | 2 - 12  | 2 - 12   | 2 - 12   | 2 - 12   | 2 - 12   | 1 - 12  | 1 - 12  | 1 - 12                                      | 1 - 12                                      | 1 - 12                                      | 1 - 12                                      | 1 - 12                                      |
| Rated Cross Section       | 1,5 mm <sup>2</sup> / 16 AWG                | 1,5 mm <sup>2</sup> / 16 AWG                                 | 1,5 mm <sup>2</sup> / 16 AWG  | 1,5 mm <sup>2</sup> / 16 AWG   | 1,5 mm <sup>2</sup> / 16 AWG                          | 2,5 mm <sup>2</sup> / 14 AWG  | ---   | 2,5 mm <sup>2</sup> / 14 AWG                       | 2,5 mm <sup>2</sup> / 14 AWG   | 2,5 mm <sup>2</sup> / 14 AWG   | 2,5 mm <sup>2</sup> / 14 AWG                                     | 2,5 mm <sup>2</sup> / 14 AWG  | 2,5 mm <sup>2</sup> / 14 AWG                                  | 4 mm <sup>2</sup> / 12 AWG                  | 4 mm <sup>2</sup> / 12 AWG                  | 10 mm <sup>2</sup> / 8 AWG                  | 10 mm <sup>2</sup> / 8 AWG                  | 25 mm <sup>2</sup> / 4 AWG                  |
| Rated Insulation Voltage  | 450 V acc. to EN 60998-1                    | 450 V acc. to EN 60998-1                                     | 250 V acc. to EN 60998-1  | 130 V acc. to EN 60998-1   | 450 V acc. to EN 60998-1                              | 450 V acc. to EN 60998-1  | 750 V acc. to EN 60998-1  | 450 V acc. to EN 60998-1                           | 450 V acc. to EN 60998-1   | 450 V acc. to EN 60998-1   | 450 V acc. to EN 60998-1   | 450 V acc. to EN 60998-1  | 450 V acc. to EN 60998-1                                      | 250 V acc. to EN 60998-1                    | 750 V acc. to EN 60998-1                    | 750 V acc. to EN 60998-1                    | 750 V acc. to EN 60998-1                    | 750 V acc. to EN 60998-1                    |
| Rated Current             | 17,5 A                                      | 6 A  | 6 A   | 6 A  | 6 A   | 26 A  | 10 A  | 16 A   | 15 A   | 15 A   | 24 A   | 24 A  | 24 A  | 32 A  | 32 A  | 57 A  | 57 A  | 101 A                                       |
| Approvals                 |   |  |   |  |   |   |   |  |  |  |  |   |   |   |   |   |   |   |
| Description               | Socket terminal strip with screw connection | Screw/solder terminal strip with screw/solder tag connection | Plug-in terminal strip with screw connection & socket with clamping spring, low profile version | Plug-in terminal strip with screw connection & socket, low profile version | Plug-in terminal strip with screw connection & socket | Screw/solder terminal strip with screw/solder tag connection, side of solder tag closed | Plug-in terminal strip with socket with clamping spring, with solder pin, for PCB | Plug-in terminal strip with screw connection & pin | Plug-in terminal strip with screw connection & pin, plug-in direction vertical, long pin | Plug-in terminal strip with screw connection & socket with clamping spring, plug-in direction vertical | Socket terminal strip with screw connection, low profile version | Socket terminal strip with screw connection, integrated push-through protection | Socket terminal strip with screw connection, with raised base | Socket terminal strip with screw connection | Socket terminal strip with screw connection | Socket terminal strip with screw connection | Socket terminal strip with screw connection | Socket terminal strip with screw connection |

**302-FB-DS**



**302-N-HDS**



**302-NSLP-HDS**



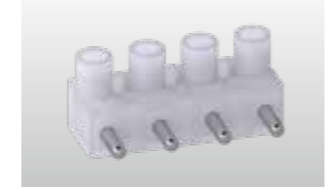
**302-NSTS-DS**



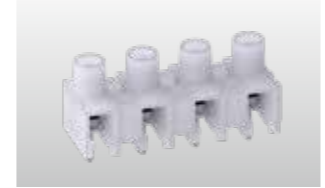
**302-ST5-DS**



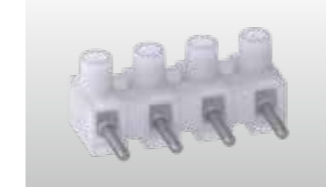
**321-S-DS**



**322-G**



**322-SV-DS**



**323-HDS**



**323-FU-16.5-HDS**



**323-PHFHW-DS**



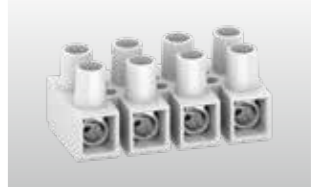
**820-DS**



**324-STFB-DS**



**327-HDS**



**329**



|                           |  |  |  |   |  |  |   |  |   |  |   |  |   |   |   |   |   |                            |
|---------------------------|--|--|--|---|--|--|---|--|---|--|---|--|---|---|---|---|---|----------------------------|
| Pitch                     | 8 mm   | 8 mm   | 8 mm   | 8 mm  | 8 mm   | 10 mm  | 10 mm   | 10 mm  | 10 mm                                       | 10 mm  | 10 mm   | 10 mm  | 10 mm   | 10 mm                                       | 11,5 mm                                     | 14,5 mm                                     | 14,5 mm                                     | 22 mm                      |
| Available number of poles | 2 - 12   | 1 - 12   | 2 - 12   | 2 - 12  | 2 - 12   | 2 - 12   | 2 - 12  | 2 - 12   | 2 - 12                                      | 1 - 12   | 1 - 12  | 2 - 12   | 1 - 12  | 1 - 12                                      | 2 - 12                                      | 1 - 12                                      | 1 - 12                                      | 1 - 12                     |
| Rated Cross Section       | 2,5 mm <sup>2</sup> / 16 AWG   | 1,5 mm <sup>2</sup> / 16 AWG                                     | 1,5 mm <sup>2</sup> / 16 AWG   | 1,5 mm <sup>2</sup> / 16 AWG  | 1,5 mm <sup>2</sup> / 16 AWG                       | 2,5 mm <sup>2</sup> / 14 AWG                       | 2,5 mm <sup>2</sup> / 14 AWG  | 2,5 mm <sup>2</sup> / 14 AWG                       | 2,5 mm <sup>2</sup> / 14 AWG                | 2,5 mm <sup>2</sup> / 14 AWG   | 2,5 mm <sup>2</sup> / 14 AWG  | 2,5 mm <sup>2</sup> / 14 AWG                                 | 2,5 mm <sup>2</sup> / 14 AWG                          | 1,5 / 2,5 mm <sup>2</sup> / 16/14 AWG       | 4 mm <sup>2</sup> / 12 AWG                  | 16 mm <sup>2</sup> / 6 AWG                  | 16 mm <sup>2</sup> / 6 AWG                  | 35 mm <sup>2</sup> / 2 AWG |
| Rated Insulation Voltage  | 130 V acc. to EN 60998-1   | 250 V acc. to EN 60998-1   | 250 V acc. to EN 60998-1   | 130 V acc. to EN 60998-1  | 450 V acc. to EN 60998-1                           | 450 V acc. to EN 60998-1                           | 750 V acc. to EN 60998-1  | 450 V acc. to EN 60998-1                           | 450 V acc. to EN 60998-1                    | 450 V acc. to EN 60998-1   | 450 V acc. to EN 60998-1  | 450 V acc. to EN 60998-1                                     | 450 V acc. to EN 60998-1                              | 450 V acc. to EN 60998-1                    | 250 V acc. to EN 60998-1                    | 750 V acc. to EN 60998-1                    | 750 V acc. to EN 60998-1                    | 750 V acc. to EN 60998-1   |
| Rated Current             | 6 A  | 17,5 A   | 6 A  | 6 A   | 6 A  | 16 A   | 15 A  | 15 A   | 24 A  | 24 A   | 24 A  | max. 25 A (screw) / 15 A (plug)                              | 17,5 A (screw) / 24 A (plug)                          | 25 A  | 25 A  | 76 A  | 76 A  | 125 A                      |
| Approvals                 |  |  |  |   |  |  |   |  |   |  |   |  |   |   |   |   |   |                            |
| Description               | Plug-in terminal strip with screw connection & socket with clamping spring | Socket terminal strip with screw connection, low profile version | Plug-in terminal strip with screw connection & pin, wire entrance vertical to pin, low profile version | Plug-in terminal strip with screw connection & pin, low profile version | Plug-in terminal strip with screw connection & pin | Plug-in terminal strip with screw connection & pin | Socket terminal strip with screw connection, with solder pin, for PCB | Plug-in terminal strip with screw connection & pin | Socket terminal strip with screw connection | Socket terminal strip with screw connection, with 2,2 mm raised base | Plug-in terminal strip with 2 screw connections & socket with clamping spring | Screw/plug-in terminal strip with screw/screwless connection | Plug-in terminal strip with screw connection & socket | Socket terminal strip with screw connection | Socket terminal strip with screw connection | Socket terminal strip with screw connection | Socket terminal strip with screw connection |                            |

**302-FLW-DS**



**302-NFLP-DS**



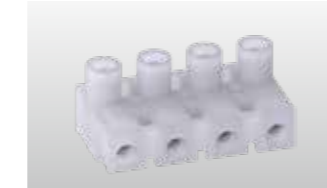
**302-NSLW-HDS**



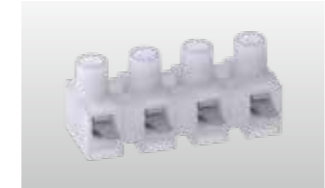
**302-NSV-DS**



**321-B-DS**



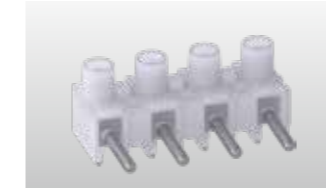
**322-A-2.8**



**322-LFS-DS**



**322-SVG**



**323-FB-HDS**



**323-FU-18.5-V-HDS**



**323-STFB-DS**



**324-HDS**



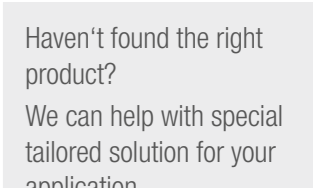
**324-STFS-DS**



**327-FU-HDS**



**Tailored Solutions**



|                           |  |  |   |   |   |  |  |  |  |  |   |   |   |  |   |   |   |   |
|---------------------------|--|--|---|---|---|--|--|--|--|--|---|---|---|--|---|---|---|---|
| Pitch                     | 8 mm   | 8 mm   | 8 mm  | 8 mm  | 10 mm   | 10 mm                                      | 10 mm  | 10 mm  | 10 mm  | 10 mm  | 10 mm   | 10 mm   | 10 mm                                       | 11,5 mm  | 11,5 mm   | 14,5 mm   | 14,5 mm   | 14,5 mm   |
| Available number of poles | 2 - 12   | 2 - 12   | 2 - 12  | 2 - 12  | 2 - 12  | 1 - 12                                     | 1 - 12   | 2 - 12   | 2 - 12   | 2 - 12   | 1 - 12  | 2 - 12  | 2 - 12                                      | 1 - 12   | 2 - 12  | 1 - 12  | 1 - 12  | 1 - 12  |
| Rated Cross Section       | 1,5 mm <sup>2</sup> / 16 AWG   | 1,5 mm <sup>2</sup> / 16 AWG   | 1,5 mm <sup>2</sup> / 16 AWG  | 1,5 mm <sup>2</sup> / 16 AWG  | 2,5 mm <sup>2</sup> / 14 AWG                          | 2,5 mm <sup>2</sup> / 14 AWG               | 2,5 mm <sup>2</sup> / 14 AWG                                 | 2,5 mm <sup>2</sup> / 14 AWG   | 2,5 mm <sup>2</sup> / 14 AWG   | 2,5 mm <sup>2</sup> / 14 AWG   | 2,5 mm <sup>2</sup> / 14 AWG  | 2,5 mm <sup>2</sup> / 14 AWG                          | 2,5 mm <sup>2</sup> / 14 AWG                | 4 mm <sup>2</sup> / 12 AWG                         | 4 mm <sup>2</sup> / 12 AWG                                    | 16 mm <sup>2</sup> / 6 AWG                                    | 16 mm <sup>2</sup> / 6 AWG                                    | 16 mm <sup>2</sup> / 6 AWG                                    |
| Rated Insulation Voltage  | 130 V acc. to EN 60998-1   | 250 V acc. to EN 60998-1   | 250 V acc. to EN 60998-1  | 250 V acc. to EN 60998-1  | 450 V acc. to EN 60998-1                              | 450 V acc. to EN 60998-1                   | 450 V acc. to EN 60998-1                                     | 750 V acc. to EN 60998-1   | 450 V acc. to EN 60998-1   | 450 V acc. to EN 60998-1   | 450 V acc. to EN 60998-1  | 450 V acc. to EN 60998-1                              | 450 V acc. to EN 60998-1                    | 450 V acc. to EN 60998-1                           | 250 V acc. to EN 60998-1                                      | 750 V acc. to EN 60998-1                                      | 750 V acc. to EN 60998-1                                      | 750 V acc. to EN 60998-1                                      |
| Rated Current             | 6 A  | 6 A  | 6 A   | 6 A   | 16 A  | 7,5 A with receptacle 2.8 mm <sup>1)</sup> | 24 A   | 10 A   | 15 A   | 15 A   | 24 A  | 24 A  | 16 A  | 32 A   | 25 A  | 76 A  | 76 A  | 76 A  |
| Approvals                 |  |  |   |   |   |  |  |  |  |  |   |   |   |  |   |   |   |   |
| Description               | Plug-in terminal strip with screw connection & socket with clamping spring, Plug-in direction vertical | Low profile plug-in terminal strip with screw connection & socket with clamping spring | Low profile plug-in terminal strip with screw connection, short pins, wire entrance vertical to pin | Plug-in terminal strip with screw connection & pin, low profile version | Plug-in terminal strip with screw connection & socket | Tab/screw connector with tab A 2.8         | Screw/solder terminal strip with screw/solder tag connection | Plug-in terminal strip with screw connection & pin, with solder pin, for PCB | Plug-in terminal strip with screw connection & socket with clamping spring | Plug-in terminal strip with screw connection & socket with clamping spring | Socket terminal strip with screw connection with wire stop, with 4,2 mm raised base | Plug-in terminal strip with screw connection & socket | Socket terminal strip with screw connection | Plug-in terminal strip with screw connection & pin | Socket terminal strip with screw connection, with raised base | Socket terminal strip with screw connection, with raised base | Socket terminal strip with screw connection, with raised base | Socket terminal strip with screw connection, with raised base |

1) plug/tab side

