



LCD132-070CTL1ARNTTR1.1

7" WUXGA High Bright Wide Gamut

In-Cell Touch

1200*1920

www.lincolntechsolutions.com

©2020 All rights reserved.

Rev.1.4

Table of Contents

Revision History3

 Document Revision3

 Hardware Revision.....3

General Specifications4

Block Diagram5

Pin Out-LCD.....6

Absolute Max Ratings - LCD.....8

Absolute Max Ratings – PCAP - In Cell Touch.....8

Electrical Characteristics - LCD.....8

Electrical Characteristics – PCAP - In Cell Touch.....9

Backlight Specifications10

Timing Specifications - LCD.....11

Timing Specifications – PCAP.....11

MIPI Init.....12

Optical Characteristics.....13

Packaging17

Quality & Inspection Criteria18

 Terminologies:18

 Inspection Conditions.....22

 Acceptance Criteria Table:.....23

Appendix 1: Mechanical Drawing25

Revision History

Document Revision

Date	Version #	Description
12/23/2019	R1.0	Preliminary Release
04/23/2020	R1.1	Updated brightness, gamut, max operating temp conditions, 40 pin out update
04/29/2020	R1.2	Added nits vs. power table and updated some formatting
12/2/2020	R1.3	Production drawing added as appendix. BL power chart updated with new production stack. Optical parameters updated. HW rev update to R1.1.
4/5/2021	R1.4	NITS alignment, NITS vs Wattage chart added to BL characteristics. Optical parameters updated for new QDEF. Uniformity updated to 5 point. Packaging added. MIPI init section added.

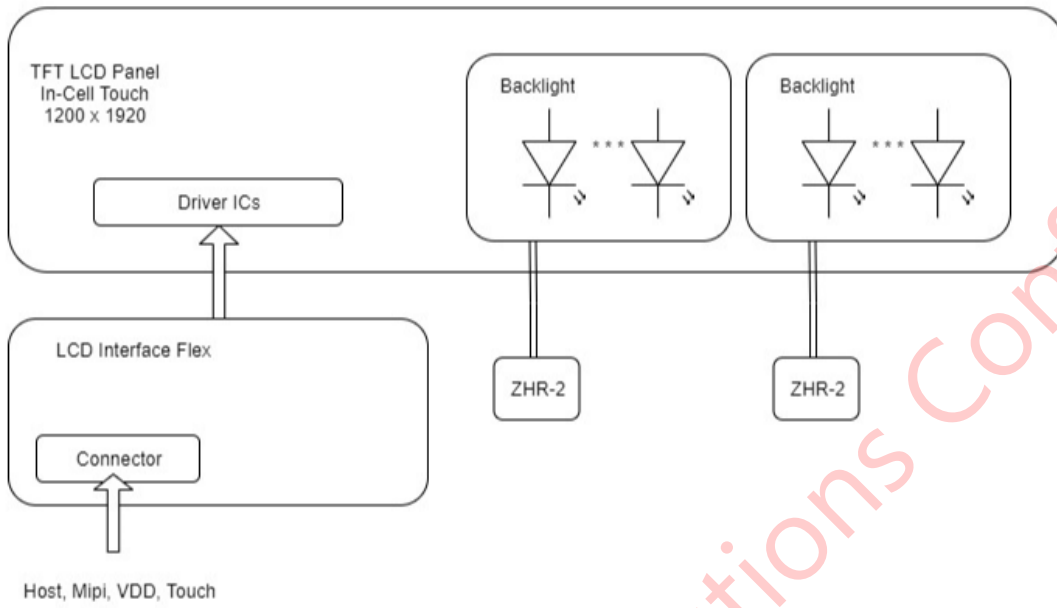
Hardware Revision

Date	Version #	Description
12/23/2019	R1.0	Production Release
12/4/2020	R1.1	Film stack update, high transmissive LG, locking LG feature, + up BEF

General Specifications

Item	Specification	Unit
Outline Dimensions	111.26(W) X 166.6(L) X 5.07(H)	mm
Display Size	7.02	inches
Active Area	94.5 X 151.2	mm
Pixel Pitch	0.07875 X 0.07875	mm
Number of Dots	1200 X 1920	-
LCD Type	ADS 10 bit (8bit + 2bit FRC)	-
Backlight Type	LED Wide Gamut	-
Viewing Direction	Free	-
Touch Panel	Capacitive Touch (In-Cell) – FT7250	-
Luminance	2500	cd/m ²
Interface	MIPI	-
Surface Treatment	Cover Lens w/AR	-
Operating	-20..70	°C

Block Diagram



Pin Out-LCD

The interface connector is a 40 pin Zif with 0.5mm pitch. It accepts an FFC of 0.3mm thickness and gold-plated contacts.

An example of the part mounted on the LCD flex is, Hirose FH28-40S-0.5SH(05)

Number	Pin Name	I/O	Description
1	NC	-	No connection – Must not connect
2	IOVCC	P	Power supply for system (1.8V)
3	IOVCC	P	Power supply for system (1.8V)
4	GND	P	Ground
5	LCD_RSTN	I	LCD reset signal, Active Low
6	NC	-	No connection
7	GND	P	Ground
8	MIPI_0N	I	MIPI Negative data inputs
9	MIPI_0P	I	MIPI Positive data inputs
10	GND	P	Power ground
11	MIPI_1N	I	MIPI Negative data inputs
12	MIPI_1P	I	MIPI Positive data inputs
13	GND	P	Power ground
14	MIPI_CKN	I	MIPI Negative clock inputs
15	MIPI_CKP	I	MIPI Positive clock inputs
16	GND	P	Power ground
17	MIPI_2N	I	MIPI Negative data inputs
18	MIPI_2P	I	MIPI Positive data inputs
19	GND	P	Power ground

20	MIPI_3N	I	MIPI Negative data inputs
21	MIPI_3P	I	MIPI Positive data inputs
22	GND	P	Power ground
23	TP_SCL	I	TP I2C Clock 1.8V
24	TP_SDA	I/O	TP I2C Data 1.8V
25	GND	P	Power ground
26	TE	O	Tear output
27	PWMO	O	PWM control signal for LED driver (CABC)
28	TP_INT	O	Touch Interrupt 1.8V
29	TP_RST	I	TP reset signal 1.8V
30	GND	P	Power ground
31	LED-	P	LED Cathode
32	LED-	P	LED Cathode
33	NC	-	No connection
34	VSN	P	Analog supply negative voltage (-5~-6V)
35	VSN	P	Analog supply negative voltage (-5~-6V)
36	NC	-	No connection
37	VSP	P	Analog supply positive voltage (5~6V)
38	VSP	P	Analog supply positive voltage (5~6V)
39	LED+	P	LED Anode
40	LED+	P	LED Anode

Absolute Max Ratings - LCD

Item	Symbol	Value	Unit
Power Supply Voltage for Logic	IOVCC	-0.3 - 4.5	V
Power for Analog Negative	VSN	0 ~ -6.6	V
Power for Analog Positive	VSP	0 ~ +6.6	V
Operating Temperature	Topr	-20 to 70 ¹	°C
Storage Temperature	Tstg	-30 to 80	°C

¹operating the module above 60°C requires thermal management or limiting the LED drive current to 120mA at 65°C and 100mA at 70°C.

Absolute Max Ratings – PCAP - In Cell Touch

Item	Symbol	Value	Unit
Power Supply Voltage for Logic	VCC	-0.3 – 3.47	V
Signal IO	VCC_IO	-0.3 – 3.47	V

Electrical Characteristics - LCD

Item	Symbol	Min	Typ	Max	Unit	Test Condition
Operating Voltage	IOVCC	1.65	1.8	1.95	V	-
Voltage for Analog Negative	VSN	-6.5	-5.5	-4.5	V	-
Voltage for Analog Positive	VSP	4.5	5.5	6.5	V	-
Supply Current	IDD(IOVCC)	-	-	50	mA	Ta = 25 °C

Supply Current	IDD(VSN)	-	-	75	mA	Ta = 25 °C
Supply Current	IDD(VSP)	-	-	75	mA	Ta = 25 °C
Input Voltage	Vih	0.7IOVCC	-	IOVCC	V	-
	Vil	0	-	0.3IOVCC	V	-
Input Leakage Current	IiL	-1.0	-	1.0	μA	Vin = IOVCC

Electrical Characteristics – PCAP - In Cell Touch

Item	Symbol	Min	Typ	Max	Unit	Test Condition
Operating Voltage	VCC	1.65	1.8*	3.3	V	-
Operating Voltage IO	VCC_IO	1.8	1.8*	3.3	V	-
Supply Current	IDD(VCC)	-	8	14.5	mA	Ta = 25 °C
Input Voltage	Vih	0.7VCC_IO	-	VCC_IO	V	-
	Vil	GND	-	0.3VCC_IO	V	-

*IOVCC powers the PCAP circuitry which is powered at 1.8V

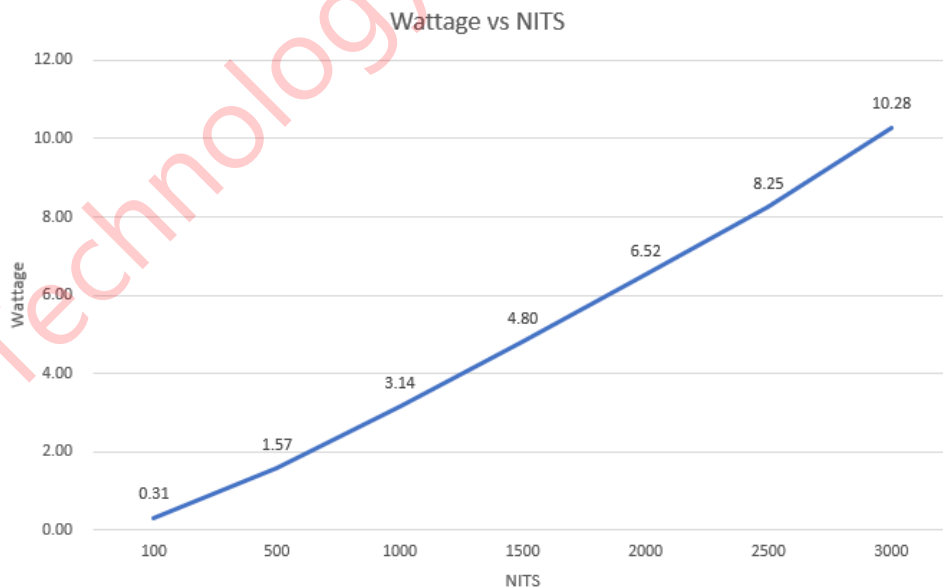
Backlight Specifications

The backlight wiring is 28AWG and has been pinned into a JST-ZH series connector. The part number is ZHR-2. An example mating part number is, S2B-ZR-SM2-TF. This design has 2 LED rails to achieve maximum brightness. The supply current mentioned below is the sum, i.e., 125mA per backlight connector is required for a total of 250mA(typical) at 2500NITS.

Number	Pin Name	I/O	Description
1	LEDA	P	LED Anode + connection
2	LEDK	P	LED Cathode - connection

Item	Symbol	Min	Typ	Max	Unit	Test Condition
Supply Voltage	Vf	-	33.0	39.6	v	If = 250mA
Supply Current	If	-	250	400*	mA	Typ = 2500 NITS
Backlight Color	Blue					

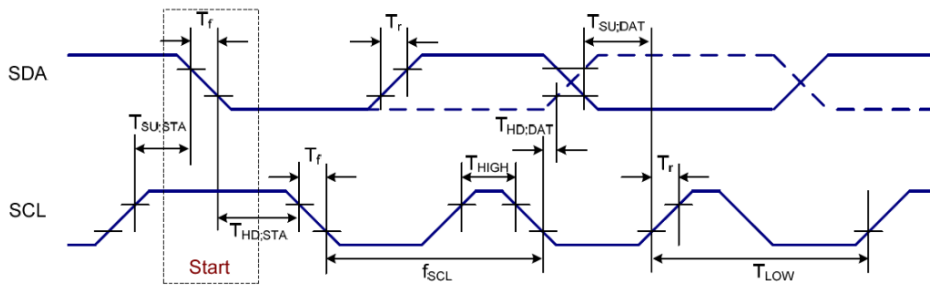
*thermal management required



Timing Specifications - LCD

Refer to Focal Tech FT7250

Timing Specifications – PCAP



Symbol	Parameter	Min	Typ	Max	Unit
f_{SCLK}	SCL clock frequency	10	-	400	kHz
T_{LOW}	SCL clock LOW period	1.2	-	-	us
T_{HIGH}	SCL clock HIGH period	0.6	-	-	us
$T_{SU;DATA}$	Data set-up time	250	-	-	ns
$T_{HD;DATA}$	Data hold time	0	-	0.9	us
T_r	SCL and SDA rise time	20	-	300	ns
T_f	SCL and SDA fall time	20	-	300	ns
T_f	SDA fall time for read out	20	-	1000	ns
C_b	Capacitive load represented by each bus line	-	-	400	pF
$T_{SU;STA}$	Setup time for a repeated START condition	0.6	-	-	us
$T_{HD;STA}$	START condition hold time	0.6	-	-	us

www.lincolntechsolutions.com

©2020 All rights reserved.

Rev.1.4

Symbol	Parameter	Min	Typ	Max	Unit
T _{SU;STO}	Setup time for STOP condition	0.6	-	-	us
T _{SW}	Tolerable spike width on bus	-	-	50	ns
T _{BUF}	BUS free time between a STOP and START condition	4.7	-	-	us

MIPI Init

The MIPI initialization sequence consists of 2 commands. This initializes touch and graphics.

```
DCS_NoParam(0x11); //Sleep out
delay(300); //Delay 300ms
DCS_NoParam(0x29); //Display On
delay(200); //Delay 200ms
```

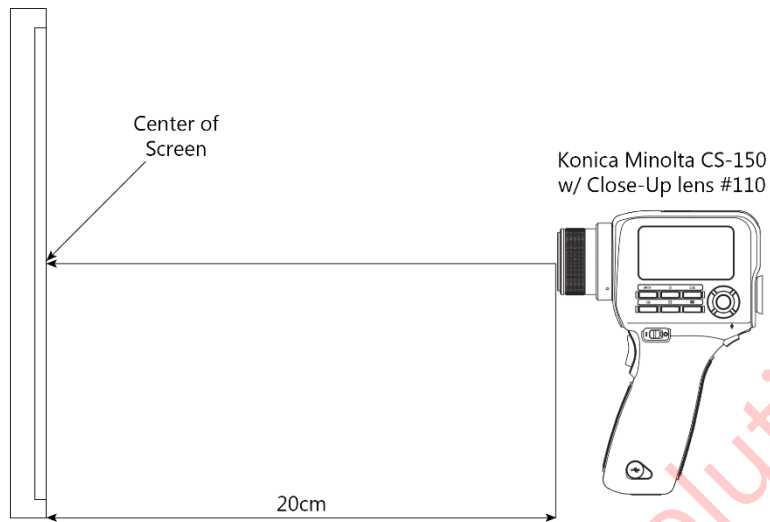
Optical Characteristics

All measurements taken after minimum runtime of 25 minutes.

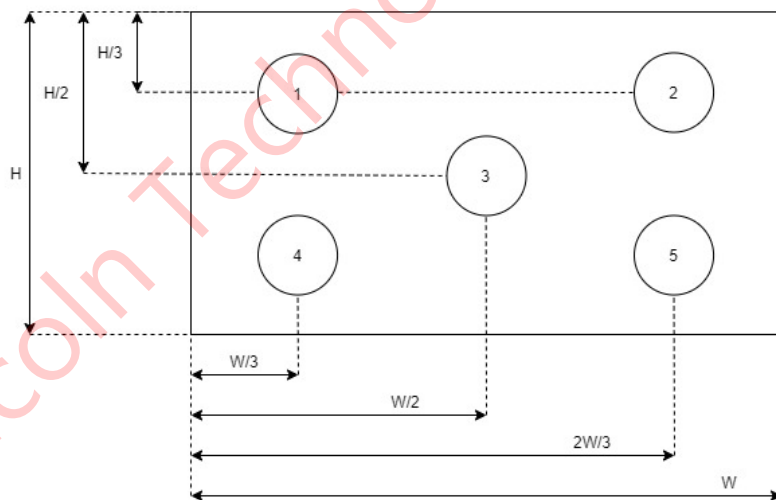
Item	Symbol	Conditions	Specification			Unit	Note	
			Min	Typ	Max			
Response Time	Tr Tf	Ta = 25°C	-	25	-	ms	(1)(4)	
Contrast Ratio	CR	Normal Viewing Angle	1200	-	-	-	(1)(3)(5)	
Viewing Angle	Hor.	X-	CR > 10	70	80	-	Deg	(3)(5)
		X+		70	80	-	Deg	
	Ver.	Y+		70	80	-	Deg	
		Y-		70	80	-	Deg	
Chromaticity	Red	Rx	Ta = 25 °C	-	.6785	-	-	
		Ry		-	.3247	-	-	
	Green	Gx		-	.1720	-	-	
		Gy		-	.7726	-	-	
	Blue	Bx		-	.1490	-	-	
		By		-	.0717	-	-	
	White	Wx		-	.3103	-	-	
		Wy		-	.3303	-	-	
Luminance	L	Ta = 25 °C	2000	2500	-	cd/m2	(1)	
Color Gamut Ratio DCI-P3			100	105	-	%		
Color Gamut Coverage DCI-P3			90	96	-	%		
Uniformity	U		75	80	-	%	(2)	

Note 1: Measurement setup

The LCD module should be stabilized at a given temperature for 25 minutes to avoid abrupt temperature change during measurement. After temperature saturation measurement should be executed.

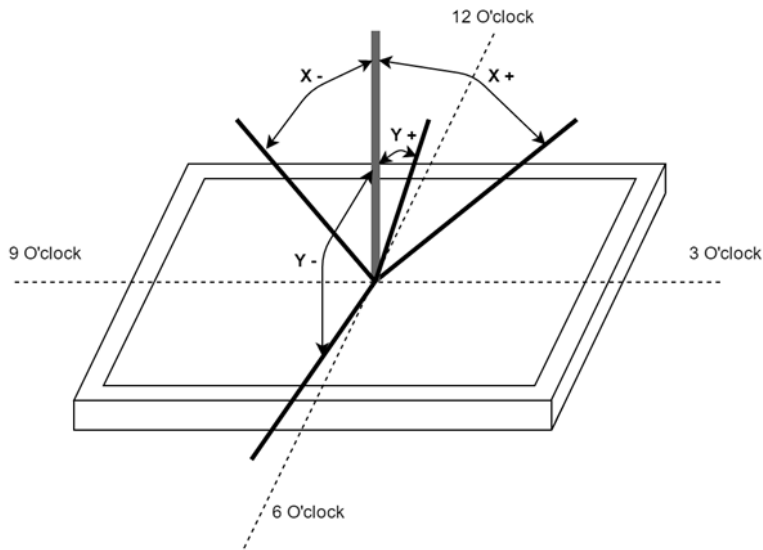
**Note 2: Brightness Uniformity**

Brightness uniformity = (Minimum Luminance of 5 points / Max Luminance of 5 points) * 100



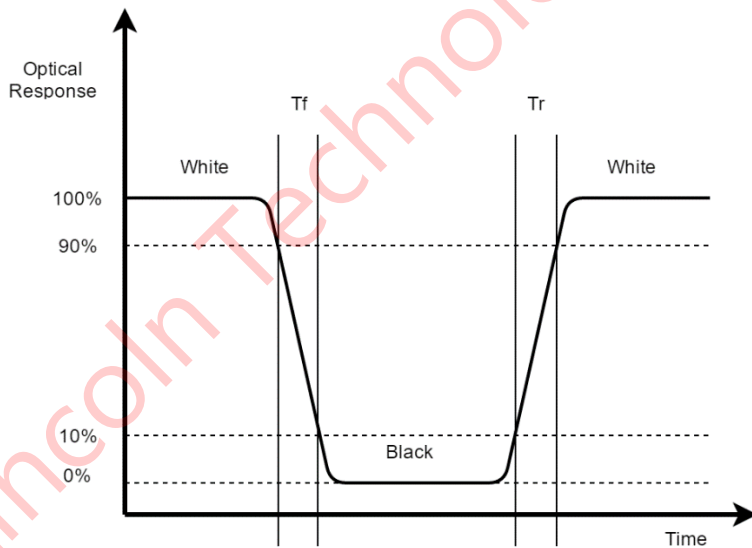
Note 3: Viewing Angle

Definition of viewing angle for Y+/- and X+/- is as follows.



Note 4: Response Time

Definition of response time as follows below.



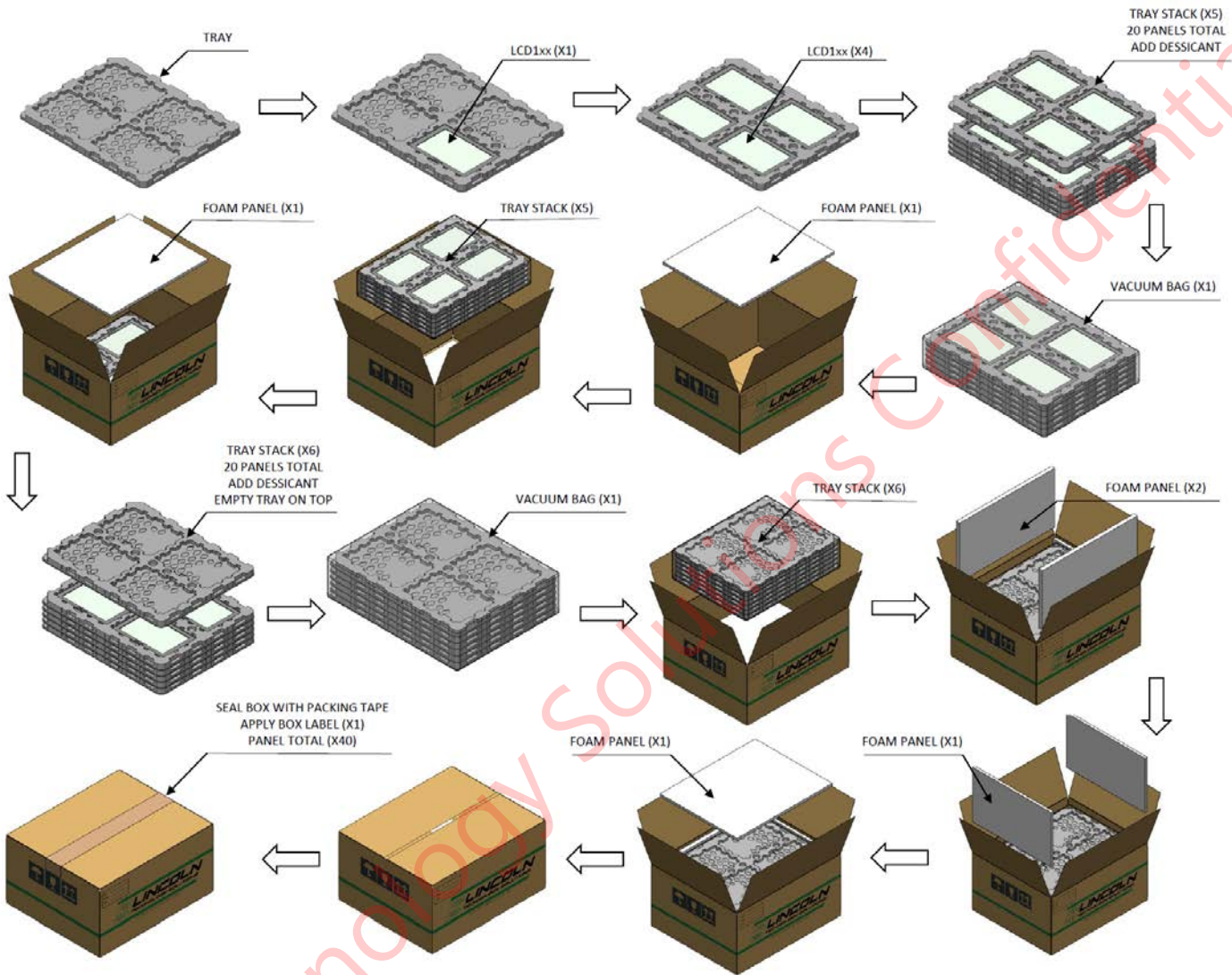
Note 5: Contrast Ratio

Definition of Contrast Ratio is as follows.

Contrast measurements shall be made at a viewing angle of 0° at the center of the surface.

$$\text{CR} = \frac{\text{Luminance when displaying White}}{\text{Luminance when displaying Black}}$$

Packaging

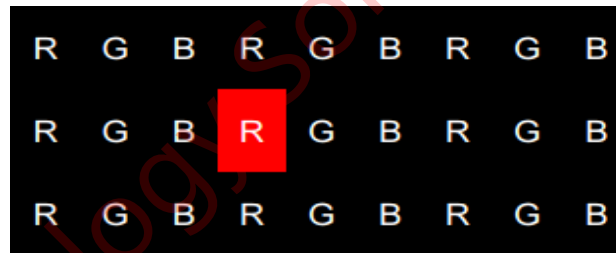
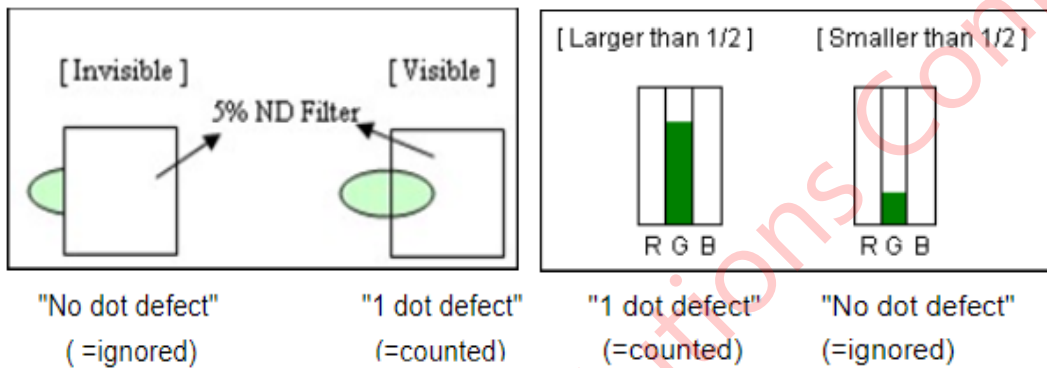


Quality & Inspection Criteria

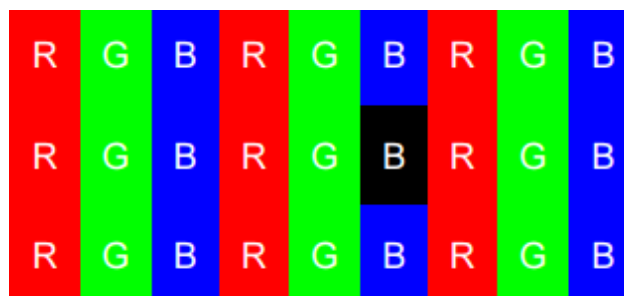
Terminologies:

LCD: Liquid Crystal Display; Each pixel contains three dots of R, G, and B (sub-pixel).

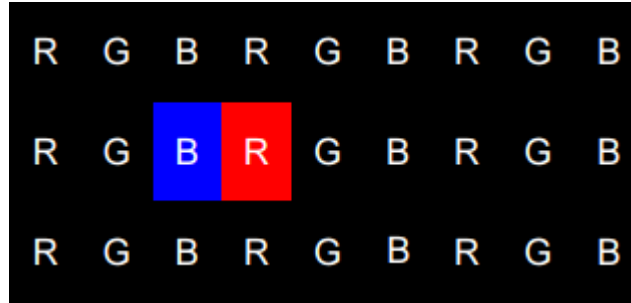
Bright Dot: 1 sub-pixel is a dot. Defects should be larger than 1/2 of a sub-pixel. Dots that are not visible through a 5% ND Filter or smaller than 1/2 of sub-pixel size will not be counted as a dot defect.



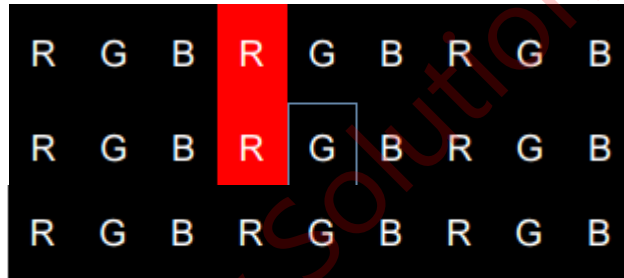
Dark Dot: Any single sub-pixel that does not light up in a white screen or another non-black screen is called a dark dot.



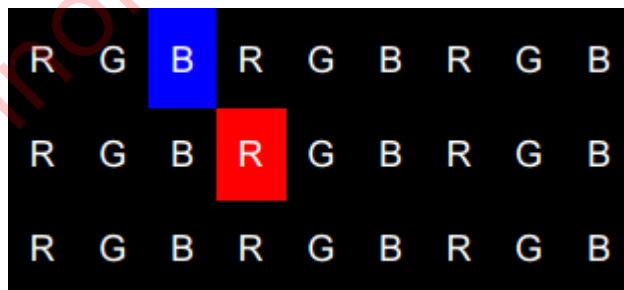
Two adjacent dots (horizontal direction): Use the bright dot illustration as an example to demonstrate two horizontal consecutive dots.



Two adjacent dots (vertical direction): Use the bright spot illustration as an example to demonstrate two vertical consecutive dots.



Two adjacent dots (bevel direction): Use the bright spot illustration as an example to demonstrate two consecutive dots in the bevel direction.



Three or more adjacent dots (horizontal): Use the bright spot illustration as an example to demonstrate three or more consecutive horizontal and vertical dots.

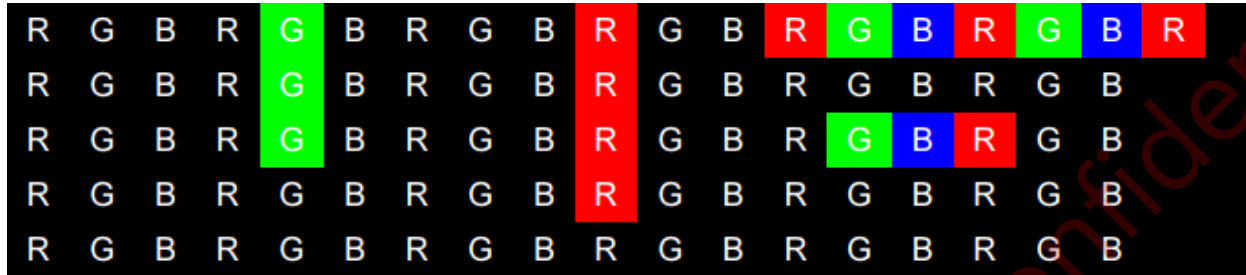
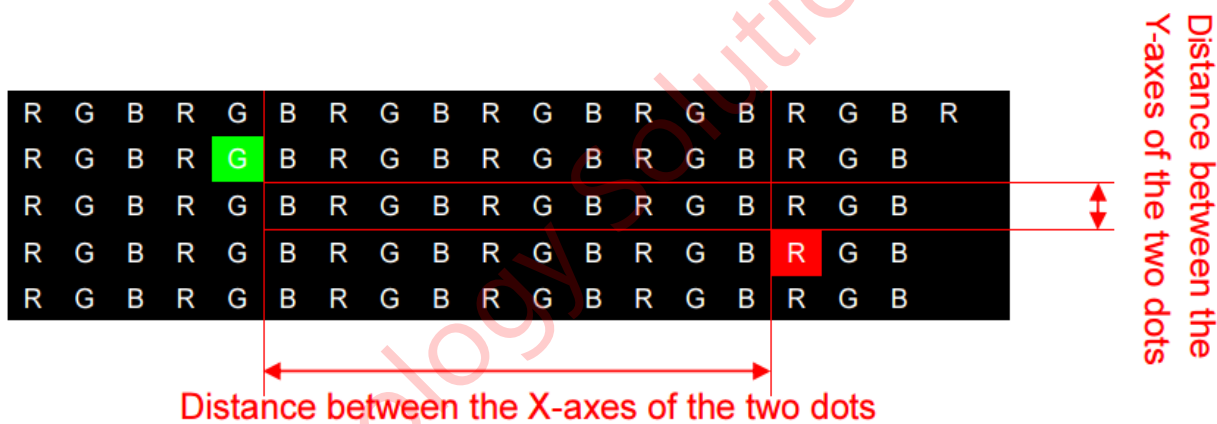


Illustration of spacing between two dots: (Distance is the relative distance between the X-axes of the two dots or the relative distance between the Y-axes of the two dots, whichever is larger)



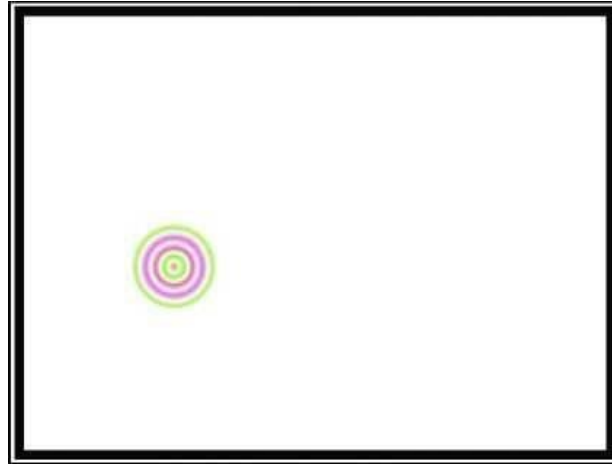
Functional Test

The LCD display testing program should display the following screens in order: all red, all green, all blue, all white, all gray, all black.

Inspection Requirements

After booting the system (single illumination), there are no non-display, unlit backlight, dark backlight, blinking, or other abnormal signs, and there are no bright lines, dark lines, or bright rims/leakage of light close to the LCD bezel.

Newton's Ring



Under high temperature and high humidity conditions, uneven deformations caused by heat in different layers of the LCD module will result in the display of an all-white screen. However, this condition can be recovered when temperature is resumed under normal circumstances. A specific determination can be conducted according to the operating conditions and storage conditions defined in the product's technical specifications. Any exception will be negotiated and mutually agreed by both parties. (Ripples are not permitted at fixed locations. For ripples at non-fixed locations, they are OK if they disappear within two seconds.)

LCD blaze

Uneven internal LCD installation, surface deformation of the LCD polarizer, internal structural interference of the LCD module, damaged LCD backlight plates, and other factors may cause partial fading of color on the LCD display. When observed from a certain incident angle (upper 10°, lower 3°, 40° on both sides), they will appear as white cicatrices, typically about the size of a grain of rice. In serious cases, they accumulate in large patches or stripes, appear in different degrees under various colors (red, blue, green, black, gray, white), and are especially obvious under an all-gray screen. Blazes with diameters $\geq 0.5\text{mm}$ are not allowed: for those with diameters under 0.5 mm, 2 are acceptable if the space between them is $\geq 15\text{mm}$. Card chromatic aberration ratio versus ND Filter: $1.0 + 0.3$ standard = 5% ND Filer (see definition of Mura).

Mura

Mura refers to the unevenness and irregularity that is visible in the image. It is difficult for visual inspection to recognize the non-uniform brightness or mura. Mura detection is subjective and therefore doesn't have pass/fail criteria. There are several precautions to take which can avoid mura. Avoid high ambient temperatures around the

module, frame warpage and high temperature operation over long periods of time. Utilize screen savers to avoid mura.

Inspection Conditions

Inspection distance should be $35\text{cm} \pm 5\text{cm}$ with a FujiFilm ND-LCD 5% filter approximately 5cm from the backlight surface.

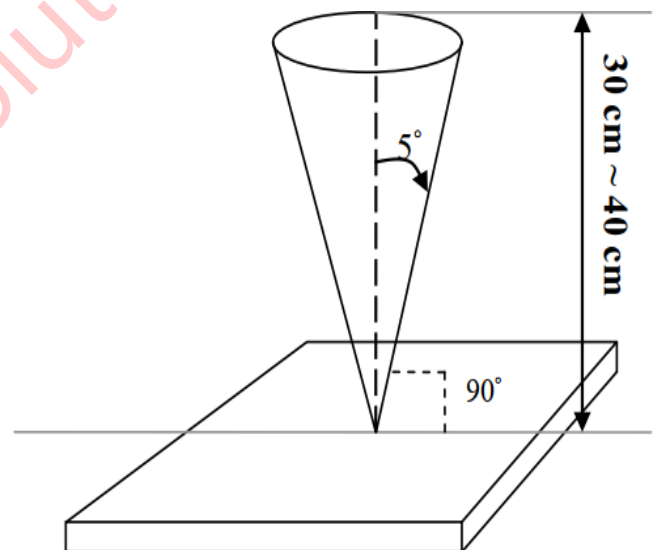
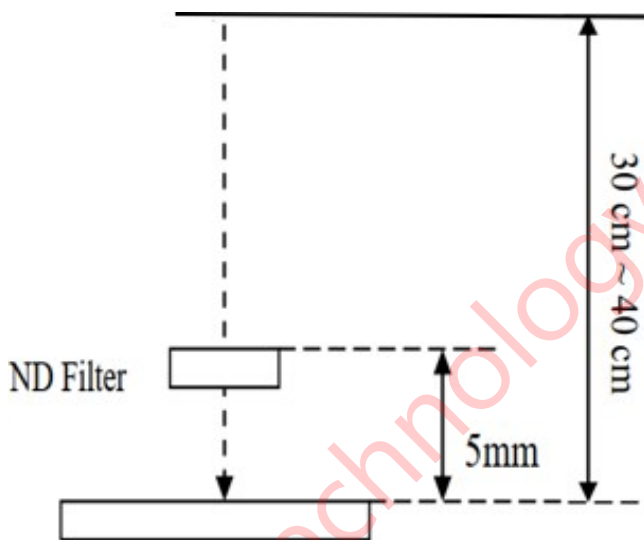
Viewing angle: $90^\circ \pm 5^\circ$.

Room temperature: $23 \pm 2^\circ\text{C}$

Humidity: $60 \pm 10\%$

Inspection Ambient Illumination: 300-700 LUX

Viewing Distance: 30-40 CM



Acceptance Criteria Table:

There should be no corrosion or cracking, or an uneven coating layer on LCD display surface, and there should be no sign of coagulation, flaking, cracking, or wear. The definition of minor defects and acceptance criteria are shown in the following table:

Item	Size	Unit	Acceptance qty.
Unfelt scratch visible with backlight off.	W < 0.05	mm	Ignore
	W > .05 and < .10 L > .3 and < 3.0	mm	4
	W > .10 or L > 3.0	mm	none
	Visible with backlight on		none
Felt scratch	None allowed		
Dent visible with backlight off	D < .2	mm	Ignore
	D > .2 and < .5	mm	5
	Spacing between defects must be > 30mm		
	D > .5	mm	none
	Visible with backlight on		none
Bubble visible with backlight off	D < .2	mm	Ignore
	D > .2 and < .5	mm	5
	D > .5	mm	none
	Visible with backlight on		none
	W < .05		Ignore

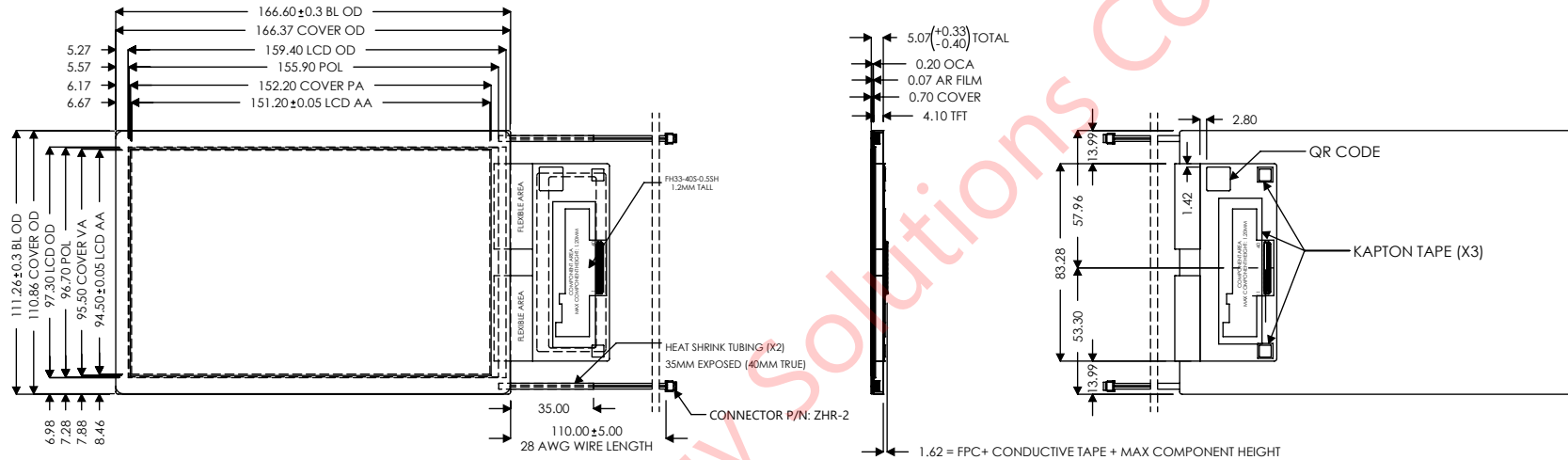
Item	Size	Unit	Acceptance qty.
Foreign material (line shape) visible with backlight on		mm	
	W > .05 and < .10 L > .3 and < 2.0	mm	4
	W > .10 or L > 2.0	mm	none
Foreign material (dot shape) visible with backlight on	D < .2	mm	Ignore
	D > .2 and < .5	mm	5
	D > .5	mm	none
Bright dot defect(lit)	1 dot	-	4
	2 adjacent dots	-	0
Dark dot defect (not lit)	1 dot	-	5
	2 adjacent dots	-	2
	3 adjacent dots	-	0

Appendix 1: Mechanical Drawing

Lincoln Technology Solutions Confidential

GENERAL TOLERANCE TABLE (\pm MM)	
L \leq 20	0.1
20 < L \leq 50	0.2
50 < L \leq 200	0.25
100 < L \leq 200	0.3
200 < L	0.5

ZONE	REV.	DESCRIPTION	DATE	APPROVED
	A	INITIAL ISSUE	1/24/2020	JK
	B	DRAWING FORMAT REVISION	11/30/2020	JK



LCD PINOUT TABLE

PIN	DEFINITION	PIN	DEFINITION	PIN	DEFINITION	PIN	DEFINITION
1	NC	11	MIPI_1N	21	MIPI_3P	31	LEDK
2	IOVCC	12	MIPI_1P	22	GND	32	LEDK
3	IOVCC	13	GND	23	TP_SCL	33	NC
4	GND	14	MIPI_CKN	24	TP_SDA	34	VSN
5	LCD_RSTN	15	MIPI_CKP	25	GND	35	VSN
6	NC	16	GND	26	TE	36	NC
7	GND	17	MIPI_2N	27	PWMO	37	VSP
8	MIPI_ON	18	MIPI_2P	28	TP_INT	38	VSP
9	MIPI_OP	19	GND	29	TP_RST	39	LEDA
10	GND	20	MIPI_3N	30	GND	40	LEDA

SCALE: 1:3 SHEET 1 OF 1

DO NOT SCALE DRAWING

DRAWN BY: DAT DATE: 11/30/2020

CHECKED BY: JK DATE: 11/30/2020

MATERIAL: N/A

FINISH: N/A

COMMENTS: ALL DIMENSIONS ARE IN MILLIMETERS.



DESCRIPTION: 7" HBWG

PART NO.: LCD132-070CTL1ARNTR1.1

DOC REV.: B

THE INFORMATION CONTAINED IN THIS DRAWING IS THE SOLE PROPERTY OF LINCOLN TECHNOLOGY SOLUTIONS (LTS) AND SHALL NOT BE REDISTRIBUTED. ANY REPRODUCTION IN PART OR AS A WHOLE WITHOUT THE WRITTEN PERMISSION OF LTS IS PROHIBITED.