

4

3

2

1


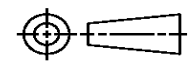
THIS DRAWING IS UNPUBLISHED. RELEASED FOR PUBLICATION
© COPYRIGHT ALL RIGHTS RESERVED.

LOC		DIST		REVISIONS			
P	LTR	DESCRIPTION		DATE	DWN	APVD	
	C1	ECR-16-009824		28JUL2016	GK	SD	

REPLACED BY OCEAN STYLE APPLICATOR PART NUMBER 2836118-1

FOR REPLACEMENT PARTS FOR APPLICATOR 1426204
REFER TO ADDITIONAL PAGE(S). SPARE PARTS KIT (IF LISTED)
WILL REMAIN AVAILABLE.

THE REPLACEMENT OCEAN STYLE APPLICATOR HAS THE
SAME TERMINATOR/PRESS INTERFACE AS APPLICATOR
1426204

THIS DRAWING IS A CONTROLLED DOCUMENT.		DWN	GOPALAKRISHNA HV		 TE Connectivity
DIMENSIONS:		CHK	GOPALAKRISHNA HV		
		TOLERANCES UNLESS OTHERWISE SPECIFIED:		NAME	
0 PLC ± 1 PLC ± 2 PLC ± 3 PLC ± 4 PLC ± ANGLES ±		APVD	STOUGH DALE		SIDE FEED HD-I APPLICATOR
MATERIAL		PRODUCT SPEC		SIZE	
FINISH		APPLICATION SPEC		CAGE CODE	DRAWING NO 1426204
		WEIGHT		SCALE	
		CUSTOMER DRAWING			

DRAWING MADE IN THIRD ANGLE PROJECTION

1426204 1426204

rd/mbaum/middleton

PART NUMBER	REV	FIRST USED	TERMINATOR	FEED TYPE	DESCRIPTION
1426204-1	C	-	LEADMAKER	MECH POST FEED	CUTS CARRIER
1426204-2	C	-	BENCH	MECH PRE FEED	CUTS CARRIER
1426204-6	C	-	LEADMAKER	MECH POST FEED	CONTINUOUS CARRIER
7-1426204-1	C	-	LEADMAKER	MECH POST FEED	-1 AND SPARE PARTS
7-1426204-2	C	-	BENCH	MECH PRE FEED	-2 AND SPARE PARTS
7-1426204-6	C	-	LEADMAKER	MECH POST FEED	-6 AND SPARE PARTS
7-1426204-7	A	-	-	-	SPARE PARTS KIT

CRIMP DATA AMP TERMINAL AMP CRIMP SPECS

TERMINAL NAME: SOCKET CONTACT, SIZE 20 DF.

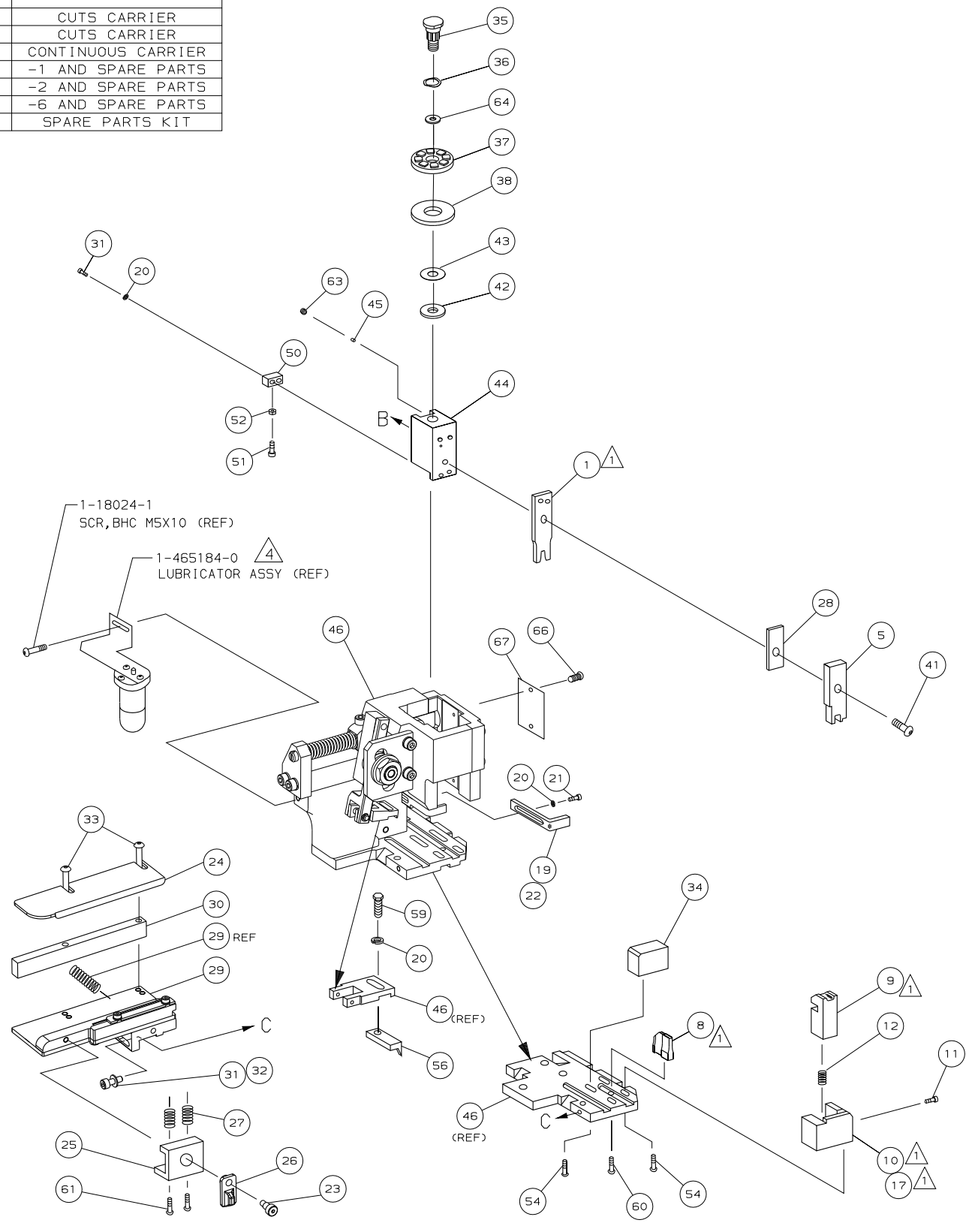
CRIMP	SIZE	TYPE	RANGE
WIRE	1.40 [.055 IN]	F	24 - 22 AWG
INSUL	-	-	-

WIRE STRIP LENGTH 2.52-3.02 [.099-.119 IN] APPL INSTRUCTION 408-8322

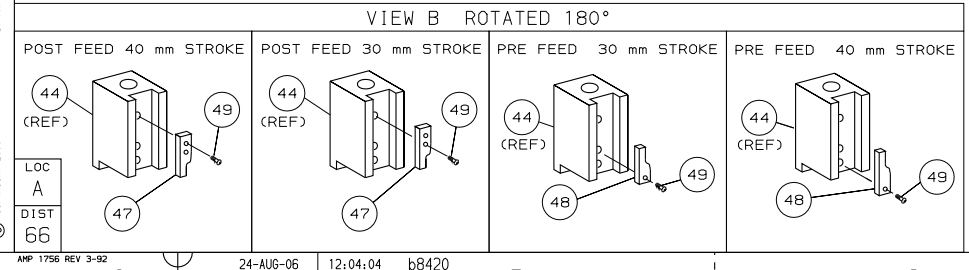
TERMINAL APPL SPEC 114-10000 FEED 7.62 [.300 IN]

TERMINALS APPLIED	SOCKET	PIN	TERMINATOR	FEED TYPE	DESCRIPTION
205201	SOCKET	-	-	-	-
205202	PIN	-	-	-	-
-	-	-	-	-	-
-	-	-	-	-	-
-	-	-	-	-	-
-	-	-	-	-	-
-	-	-	-	-	-
-	-	-	-	-	-
-	-	-	-	-	-
-	-	-	-	-	-

WIRE SIZE mm ² AWG	CRIMP HEIGHT	PIN PN AND LENGTH [IN]
20 AWG	0.81 ±0.05 [.032 ±.002 IN]	5-354779-7 [.3275]
22 AWG	0.81 ±0.05 [.032 ±.002 IN]	5-354779-7 [.3275]
24 AWG	0.81 ±0.05 [.032 ±.002 IN]	5-354779-7 [.3275]



- 1. RECOMMENDED SPARE PARTS.
- 2. GREASE RAM, CAM, CAM FOLLOWER AND FEED ROD LIGHTLY.
- 3. LUBRICATE DAILY PER THE APPLICATOR INSTRUCTION SHEET SUPPLIED WITH THE APPLICATOR.
- 4. CERTAIN TERMINALS REQUIRE LUBRICATION. REFER TO THE APPLICATOR INSTRUCTION SHEET FOR MORE INFORMATION.



QTY	REQD	PER	ASSY	PART NO	DESCRIPTION	ITEM NO			
-	1	1	1	1	1	1426204	PRINT, APPLICATOR LOG SHEET	73	
-	1	1	1	1	1	1338705-1	DOCUMENTATION PACKAGE	71	
-	-	-	-	-	-	-	-	70	
-	-	-	-	-	-	-	-	69	
-	-	-	-	-	-	-	-	68	
-	1	1	1	1	1	461264-1	PLATE, IDENTIFICATION	67	
-	2	2	2	2	2	21017-2	SCR, DRIVE (#2X.19) ID PLATE	66	
-	-	-	-	-	-	-	-	65	
-	1	1	1	1	1	986950-1	WASHER, FLAT PRECISION	64	
-	1	1	1	1	1	3-18031-0	SCR, SKT SET (M6X6) RAM	63	
-	-	-	-	-	-	-	-	62	
-	2	2	2	2	2	2-18032-5	SCR, SOC SET (M5X20) DRAG	61	
-	1	1	1	1	1	18024-7	SCR, BHC (M4X10) ANVIL	60	
-	1	1	1	1	1	5-18022-2	SCR, HEX (M4X8) FEED FINGER	59	
-	-	-	-	-	-	-	-	58	
-	-	-	-	-	-	-	-	57	
-	1	1	1	1	1	1338685-1	PAWL, FEED	56	
-	-	-	-	-	-	-	-	55	
-	4	4	4	4	4	18024-8	SCR, BHC (M4X12) SHEAR HOLDER	54	
-	-	-	-	-	-	-	-	53	
-	1	1	1	1	1	18030-1	NUT, HEX (M3) HOLD DOWN	52	
-	1	1	1	1	1	811242-5	BUMPER, HOLDDOWN	51	
-	1	1	1	1	1	690753-2	SPACER, TONKER	50	
-	1	1	1	1	1	18024-3	SCR, BHC (M3X10) CAM	49	
-	-	-	-	-	-	-	-	48	
-	1	1	1	1	1	1338675-1	CAM, PRE FEED 30 & 40 mm ST	48	
-	1	1	1	1	1	1338676-1	CAM, POST FEED 30 & 40 mm ST	47	
-	1	1	1	1	1	1320999-3	APPLICATOR BASIC SUBASSY	46	
-	1	1	1	1	1	690191-1	PLUG, NYLON	45	
-	1	1	1	1	1	1338660-1	RAM	44	
-	1	1	1	1	1	690125-1	WASHER, LAMINATED	43	
-	1	1	1	1	1	690124-1	WASHER, RAM	42	
-	1	1	1	1	1	2-18024-6	SCR, BHC (M8X25) RAM	41	
-	-	-	-	-	-	-	-	40	
-	-	-	-	-	-	-	-	39	
-	1	1	1	1	1	690223-2	SPACER, INSULATION DISC	38	
-	1	1	1	1	1	354777-1	WIRE DISC, PLASTIC	37	
-	1	1	1	1	1	22480-5	WASHER, SPRING	36	
-	1	1	1	1	1	690212-1	POST, RAM	35	
-	1	1	1	1	1	1424186-2	SUPPORT, TERMINAL	34	
-	2	2	2	2	2	1-18024-0	SCR, BHC (M4X20) STRIP GUIDE	33	
-	1	1	1	1	1	18027-2	WASHER, FLAT (M4)	32	
-	3	3	3	3	3	1-18023-2	SCR, SKT CAP (M4X12) MOUNT BLOCK	31	
-	1	1	1	1	1	1320908-9	SPACER, STRIP GUIDE	30	
-	1	1	1	1	1	1633073-3	STRIP GUIDE PLATE ASSY	29	
-	1	1	1	1	1	1-455888-0	SPACER, FRONT SHEAR DEP	28	
-	2	2	2	2	2	1-22284-0	SPRING, DRAG	27	
-	1	1	1	1	1	356835-1	LEVER, DRAG RELEASE	26	
-	1	1	1	1	1	240792-1	DRAG, TERMINAL	25	
-	1	1	1	1	1	1320928-1	PLATE, STRIP GUIDE	24	
-	1	1	1	1	1	980371-4	SCR, SHC SHLD	23	
-	1	1	1	1	1	690472-2	STRIPPER	22	
-	1	1	1	1	1	1-18023-1	SCR, SHC (M4X10) STRIPPER	21	
-	4	4	4	4	4	18025-2	WASHER, LOCK (M4) STRIPPER	20	
-	-	-	-	-	-	-	-	19	
-	-	-	-	-	-	-	-	18	
-	1	-	-	1	-	1338684-1	HOLDER, SHEAR, FRONT (NO-CUT)	17	
-	-	-	-	-	-	-	-	16	
-	-	-	-	-	-	-	-	15	
-	-	-	-	-	-	-	-	14	
-	-	-	-	-	-	-	-	13	
-	1	1	1	1	1	3-22280-3	SPRING, SHEAR	12	
-	1	1	1	1	1	356885-4	STOP, SHEAR	11	
-	-	1	1	-	1	1320921-1	HOLDER, SHEAR, FRONT (CUT)	10	
-	1	1	1	1	1	462006-1	SHEAR, FLOAT (FRONT)	9	
-	1	2	2	2	1	1333227-4	ANVIL	8	
-	-	-	-	-	-	-	-	7	
-	-	-	-	-	-	-	-	6	
-	1	1	1	1	1	2-455889-0	DEPRESSOR, SHEAR (FRONT)	5	
-	-	-	-	-	-	-	-	4	
-	-	-	-	-	-	-	-	3	
-	-	-	-	-	-	-	-	2	
-	1	2	2	2	1	1	1-456402-7	CRIMPER, WIRE	1

THIS DRAWING IS UNPUBLISHED. RELEASE FOR PUBLICATION BY AMP INCORPORATED. ALL RIGHTS RESERVED. © COPYRIGHT 2000 AMP 1756 REV 3-92

QTY REQD PER ASSY

REVISION OF EACH ASSY NO (WHEN BLANK, USE DWG REVISION)

PARTS LIST

DO NOT SCALE PRINT. TOLERANCES UNLESS OTHERWISE SPECIFIED: 1 PLC DEC ±0.5 [.02 IN] 2 PLC DEC ±- 3 PLC DEC ±-

DR L.LOFTHOUSE 17MAY01 APP F.BACKHURST 17MAY01
 CHK - REL 05JUL01 L.LOFTHOUSE

NAME SIDE FEED HD-I APPLICATOR MACHINE REF HD-I APPL
 SCALE - DWG NO 1426204 SHEET 1 of 1 REV C

DATE 24-AUG-06 12:04:04 b8420

CHG CODE 00779 CUSTOMER AND ASSEMBLY DRAWING RESTRICTED TO -