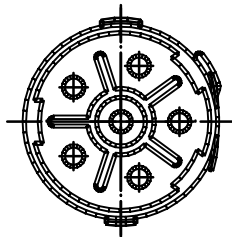
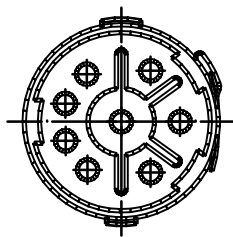


Views from "X"

6-Pole
(5+1)



8-Pole

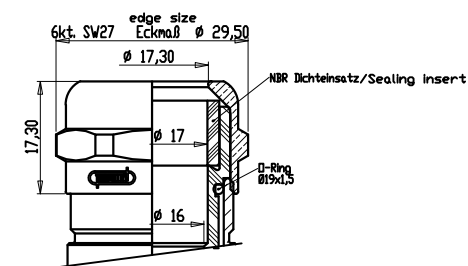
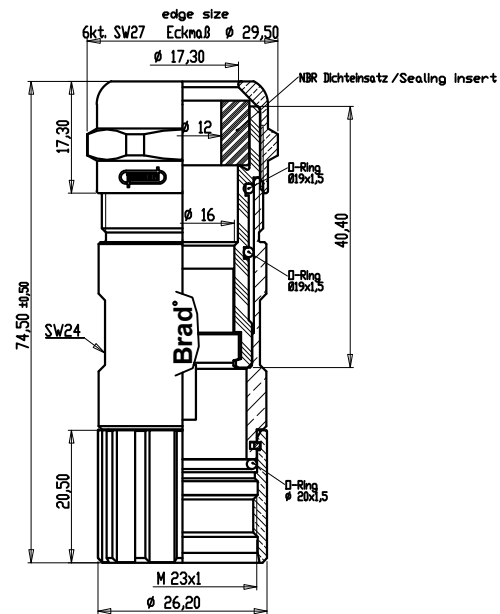


Cable Diameter

7 - 12 mm

Cable Diameter

11 - 17 mm



Cable Diameter		Crimp Contacts	Without Contacts
6 Pole (5+PE)	7 - 12mm	KAP6S00-105	KAP6S00-005
		1202330001	1202330003
	11 - 17mm	KAP6S00-109	KAP6S00-009
		1202330002	1202330004
	Crimp range*	0,75-2,5mm ²	
8 Pole	7 - 12mm	KAP8S00-115	KAP8S00-005
		1202330005	1202330007
	11 - 17mm	KAP8S00-119	KAP8S00-009
		1202330006	1202330008
	Crimp range*	0,25-1,0mm ² /0,75-2,5mm ²	

*Crimp range only applies to "Crimp Contacts" version

Notes:

Tolerances (unless specified): DIN ISO 2768 m

DESCRIPTION EC NO: IPG2015-0907 DRWN: BBRAUCH 2014/11/18 CHKD: ZISMAYIL 2014/11/19 APPR: CBURGER	QUALITY SYMBOLS	GENERAL TOLERANCES (UNLESS SPECIFIED)	DIMENSION STYLE	SCALE	DESIGN UNITS	THIRD ANGLE PROJECTION
	▽ = 0	4 PLACES ± ---	mm INCH	MM	METRIC	FA M23 XP FE STR
	▽ = 0	3 PLACES ± ---				----
		2 PLACES ± 0.05				----
		1 PLACE ± 0.1				
	0 PLACE ± ---					
	ANGULAR ± --- °					
	DRAFT WHERE APPLICABLE MUST REMAIN WITHIN DIMENSIONS					
			see table		SD-120233-001	
			SIZE A3	THIS DRAWING CONTAINS INFORMATION THAT IS PROPRIETARY TO MOLEX INCORPORATED AND SHOULD NOT BE USED WITHOUT WRITTEN PERMISSION		

molex

SHEET NO.
1 OF 1