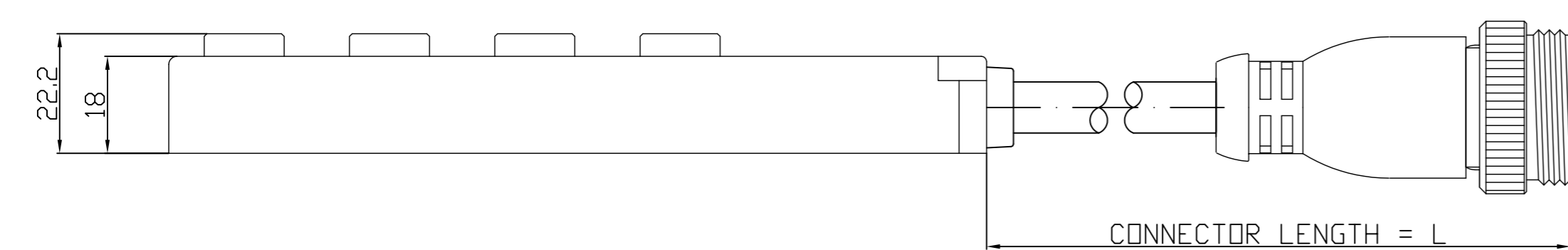


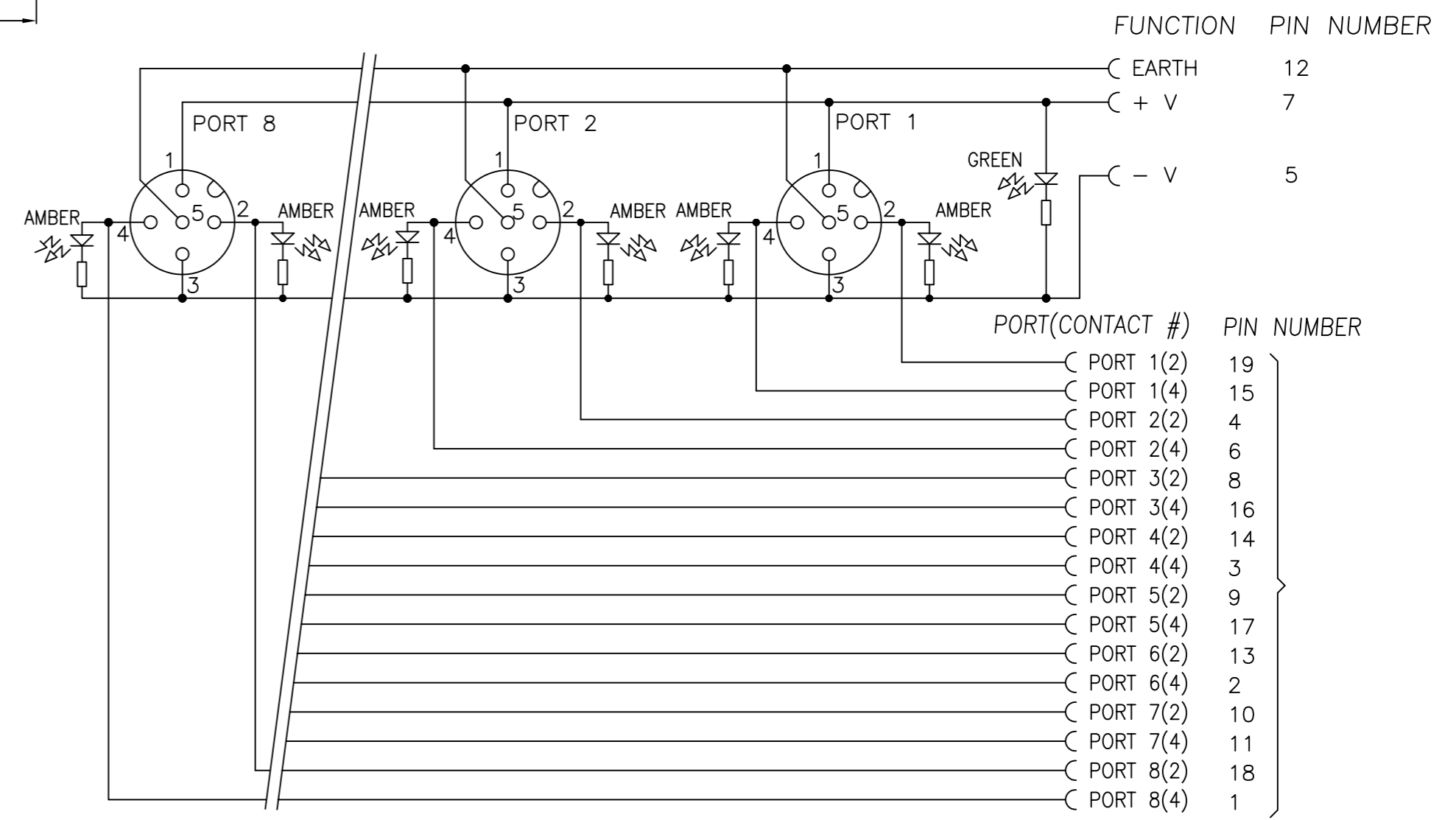
NOTE
FACE VIEW ON
END RECEPTACLE



MATERIAL NUMBER	OLD PART NUMBER	FINISHED LENGTH
1201140096	BTY812P-FBP-003	0.3M ± 10
1201140097	BTY812P-FBP-05	5.0M ± 25
1201140098	BTY812P-FBP-10	10.0M ± 30

VOLTAGE RATING	10-30 VDC
AMPERAGE RATING PER PORT	4 AMPS
PROTECTION	IP67
OPERATING TEMPERATURE	-5°C TO 90°C
UL CERTIFICATIONS	UL RECOGNIZED, FILE NO. E46237
CSA CERTIFICATIONS	CSA CERTIFIED, FILE NO. LR6837

ITEM	COMPONENT	MATERIAL	FINISH
1	CONTACT SOCKET	COPPER ALLOY	GOLD OVER NICKEL
2	O-RING	VITON	RED
3	RECEPTACLE SHELL	BRASS	NICKEL PLATED
4	HOUSING	PBT	YELLOW
5	LABEL	ABS	WHITE
6	LENS	NYLON	CLEAR
7	CABLE	PUR	-



DESCRIPTION EC NO: WEU2010-0451 DRWN: LSTEMMLE 2010/03/22 CHKD: NSTAUDIG APPR: FPACHER 2010/03/23	QUALITY SYMBOLS ▽ = 0 ◻ = 0	GENERAL TOLERANCES (UNLESS SPECIFIED)	DIMENSION STYLE MM ONLY	SCALE 1:1	DESIGN UNITS METRIC	THIRD ANGLE PROJECTION																													
	1	<table border="1"> <thead> <tr> <th></th> <th>mm</th> <th>INCH</th> </tr> </thead> <tbody> <tr> <td>4 PLACES</td> <td>±---</td> <td>±---</td> </tr> <tr> <td>3 PLACES</td> <td>±---</td> <td>±---</td> </tr> <tr> <td>2 PLACES</td> <td>±---</td> <td>±.01</td> </tr> <tr> <td>1 PLACE</td> <td>±0.3</td> <td>±---</td> </tr> <tr> <td colspan="3">ANGULAR ± --- °</td> </tr> </tbody> </table>		mm	INCH	4 PLACES	±---	±---	3 PLACES	±---	±---	2 PLACES	±---	±.01	1 PLACE	±0.3	±---	ANGULAR ± --- °			<table border="1"> <thead> <tr> <th>DRAWN BY</th> <th>DATE</th> </tr> </thead> <tbody> <tr> <td>LSTEMMLE</td> <td>2010/03/22</td> </tr> <tr> <th>CHECKED BY</th> <th>DATE</th> </tr> <tr> <td>FP</td> <td>2010/03/22</td> </tr> <tr> <th>APPROVED BY</th> <th>DATE</th> </tr> <tr> <td>FPACHER</td> <td>2010/03/23</td> </tr> </tbody> </table>	DRAWN BY	DATE	LSTEMMLE	2010/03/22	CHECKED BY	DATE	FP	2010/03/22	APPROVED BY	DATE	FPACHER	2010/03/23	<p>MICRO-CHANGE MPIS 8 PORT PNP TWIN PORT 5P 19P MM MOULDET CONNECTOR</p> <p>MOLEX INCORPORATED</p>	
	mm	INCH																																	
4 PLACES	±---	±---																																	
3 PLACES	±---	±---																																	
2 PLACES	±---	±.01																																	
1 PLACE	±0.3	±---																																	
ANGULAR ± --- °																																			
DRAWN BY	DATE																																		
LSTEMMLE	2010/03/22																																		
CHECKED BY	DATE																																		
FP	2010/03/22																																		
APPROVED BY	DATE																																		
FPACHER	2010/03/23																																		
DRAFT WHERE APPLICABLE MUST REMAIN WITHIN DIMENSIONS		SEE TABLE	THIS DRAWING CONTAINS INFORMATION THAT IS PROPRIETARY TO MOLEX INCORPORATED AND SHOULD NOT BE USED WITHOUT WRITTEN PERMISSION		DOCUMENT NO. SD-120114-089																														