

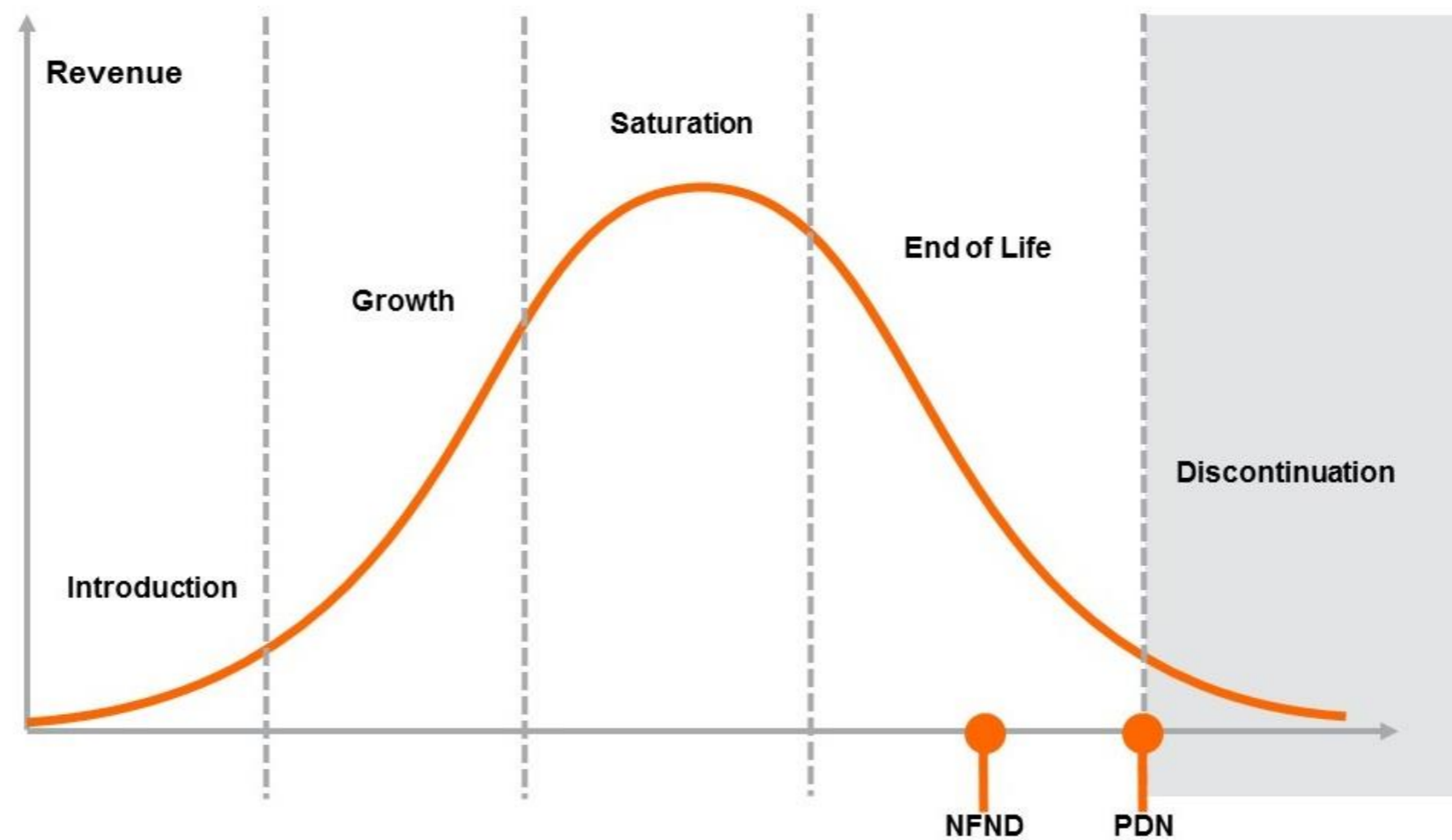
Product Or Individual Q-Code Discontinuation (acc. JEDEC J-STD-048)  
OS-PDN-2019-041

15 July 2019

---

**Last order:** 15 January 2020  
**Last delivery:** 15 July 2020

---



Please direct your feedback to your local Sales office.

DISCONTINUED				NEW (REPLACEMENT)		
Device	Ordering Code	Brand	Reason for discontinuation	Device	Datasheet Ordering Code	Brand
<b>LA M67B</b>						
LA M67B-T2U2-1-0-30-R18-Z	Q65110A9150	Mini TOPLED	Portfolio clearance	LA M67F-V1AB-24-1-20-R18-Z	Q65111A1848	Mini TOPLED
LA M67B-T2U2-1-0-30-R18-Z	Q65110A9150	Mini TOPLED	Portfolio clearance	KR DELPS1.22-UHVI-26-H3Q4-20-S	Q65112A5163	TOPLED
LA M67B-T2U2-1-0-30-R18-Z-KS	Q65110A8066	Mini TOPLED	Portfolio clearance	LA M67F-V1AB-24-1-20-R18-Z	Q65111A1848	Mini TOPLED
LA M67B-T2U2-1-0-30-R18-Z-KS	Q65110A8066	Mini TOPLED	Portfolio clearance	KR DELPS1.22-UHVI-26-H3Q4-20-S	Q65112A5163	TOPLED
LA M67B-T2V1-1-0-30-R18-Z	Q65110A2368	Mini TOPLED	Portfolio clearance	LA M67F-V1AB-24-1-20-R18-Z	Q65111A1848	Mini TOPLED
LA M67B-T2V1-1-0-30-R18-Z	Q65110A2368	Mini TOPLED	Portfolio clearance	KR DELPS1.22-UHVI-26-H3Q4-20-S	Q65112A5163	TOPLED
<b>LCG M67S</b>						
LCG M67S-P1R1-4-0-10-R18-Z	Q65110A4588	Mini TOPLED	Portfolio clearance			
LCG M67S-P2Q2-4-0-10-R18-Z	Q65110A4589	Mini TOPLED	Portfolio clearance			
LCG M67S-P2Q2-4-0-10-R18-Z-APS	Q65111A8384	Mini TOPLED	Portfolio clearance			
LCG M67S-Q1R1-4-0-10-R18-Z	Q65110A4633	Mini TOPLED	Portfolio clearance			
<b>LCL M67S</b>						
LCL M67S-P2Q2-4-0-10-R18-Z	Q65110A3185	Mini TOPLED	Portfolio clearance			
LCL M67S-P2Q2-45-0-10-R18-Z	Q65110A2287	Mini TOPLED	Portfolio clearance			
LCL M67S-Q1Q2-4-0-10-R18-Z	Q65110A3214	Mini TOPLED	Portfolio clearance			
<b>LG M670</b>						
LG M670-J2K2-1-0-10-R18-Z	Q65110A4302	Mini TOPLED	Portfolio clearance	LG M67K-G1J2-24-0-2-R18-Z	Q65110A2395	Mini TOPLED

DISCONTINUED				NEW (REPLACEMENT)		
Device	Ordering Code	Brand	Reason for discontinuation	Device	Datasheet Ordering Code	Brand
LG M670-J2L1-1-0-10-R18-Z	Q65110A2372	Mini TOPLED	Portfolio clearance	LG M67K-G1J2-24-0-2-R18-Z	Q65110A2395	Mini TOPLED
LG M670-J2M1-1-0-10-R18-Z	Q65110A2374	Mini TOPLED	Portfolio clearance	LG M67K-G1J2-24-0-2-R18-Z	Q65110A2395	Mini TOPLED
LG M670-K1L2-1-0-10-R18-Z-KS	Q65110A5120	Mini TOPLED	Portfolio clearance	LG M67K-G1J2-24-0-2-R18-Z	Q65110A2395	Mini TOPLED
LG M670-K1L2-1-0-10-R33-Z	Q65110A3672	Mini TOPLED	Portfolio clearance	LG M67K-G1J2-24-0-2-R18-Z	Q65110A2395	Mini TOPLED
LG M670-K2M1-1-0-10-R18-Z	Q65110A2373	Mini TOPLED	Portfolio clearance	LG M67K-G1J2-24-0-2-R18-Z	Q65110A2395	Mini TOPLED
<b>LG M676</b>						
LG M676-N2P2-24-0-20-R18-Z	Q65110A3708	Mini TOPLED	Portfolio clearance	LG M67K-G1J2-24-0-2-R18-Z	Q65110A2395	Mini TOPLED
LG M676-N2P2-24-0-20-R18-Z	Q65110A3708	Mini TOPLED	Portfolio clearance	KG DELMS1.22-PHQI-24-E6L6-20-S	Q65112A4854	TOPLED
LG M676-N2Q1-23-0-20-R18-Z	Q65110A8152	Mini TOPLED	Portfolio clearance	LG M67K-G1J2-24-0-2-R18-Z	Q65110A2395	Mini TOPLED
LG M676-N2Q1-23-0-20-R18-Z	Q65110A8152	Mini TOPLED	Portfolio clearance	KG DELMS1.22-PHQI-24-E6L6-20-S	Q65112A4854	TOPLED
LG M676-N2Q1-24-0-20-R18-Z	Q65110A2389	Mini TOPLED	Portfolio clearance	LG M67K-G1J2-24-0-2-R18-Z	Q65110A2395	Mini TOPLED
LG M676-N2Q1-24-0-20-R18-Z	Q65110A2389	Mini TOPLED	Portfolio clearance	KG DELMS1.22-PHQI-24-E6L6-20-S	Q65112A4854	TOPLED
LG M676-P1Q1-24-0-20-R18-Z	Q65110A4303	Mini TOPLED	Portfolio clearance	LG M67K-G1J2-24-0-2-R18-Z	Q65110A2395	Mini TOPLED
LG M676-P1Q1-24-0-20-R18-Z	Q65110A4303	Mini TOPLED	Portfolio clearance	KG DELMS1.22-PHQI-24-E6L6-20-S	Q65112A4854	TOPLED
LG M676-P1Q1-24-0-20-R33-Z-HE	Q65110A6024	Mini TOPLED	Portfolio clearance	LG M67K-G1J2-24-0-2-R18-Z	Q65110A2395	Mini TOPLED
LG M676-P1Q1-24-0-20-R33-Z-HE	Q65110A6024	Mini TOPLED	Portfolio clearance	KG DELMS1.22-PHQI-24-E6L6-20-S	Q65112A4854	TOPLED
LG M676-P2Q1-3-0-20-R18-Z-JC	Q65110A8907	Mini TOPLED	Portfolio clearance	LG M67K-G1J2-24-0-2-R18-Z	Q65110A2395	Mini TOPLED
LG M676-P2Q1-3-0-20-R18-Z-JC	Q65110A8907	Mini TOPLED	Portfolio clearance	KG DELMS1.22-PHQI-24-E6L6-20-S	Q65112A4854	TOPLED
LG M676-P2Q2-24-0-20-R18-Z	Q65110A7023	Mini TOPLED	Portfolio clearance	LG M67K-G1J2-24-0-2-R18-Z	Q65110A2395	Mini TOPLED

DISCONTINUED				NEW (REPLACEMENT)		
Device	Ordering Code	Brand	Reason for discontinuation	Device	Datasheet Ordering Code	Brand
LG M676-P2Q2-24-0-20-R18-Z	Q65110A7023	Mini TOPLED	Portfolio clearance	KG DELMS1.22-PHQI-24-E6L6-20-S	Q65112A4854	TOPLED
<b>LO M670</b>						
LO M670-H2K1-24-0-10-R18-Z	Q65110A2375	Mini TOPLED	Portfolio clearance	LO M67K-J2M1-24-0-2-R18-Z	Q65110A2055	Mini TOPLED
LO M670-H2L1-24-0-10-R18-Z	Q65110A2377	Mini TOPLED	Portfolio clearance	LO M67K-J2M1-24-0-2-R18-Z	Q65110A2055	Mini TOPLED
LO M670-J1K2-34-0-10-R18-Z	Q65110A6120	Mini TOPLED	Portfolio clearance	LO M67K-J2M1-24-0-2-R18-Z	Q65110A2055	Mini TOPLED
LO M670-J2L1-24-0-10-R18-Z	Q65110A2376	Mini TOPLED	Portfolio clearance	LO M67K-J2M1-24-0-2-R18-Z	Q65110A2055	Mini TOPLED
<b>LO MZ7F</b>			Portfolio clearance	KO DELPS1.22-UGVI-24-H3Q4-20-S	Q65112A3997	TOPLED
<b>LP M676</b>						
LP M676-K2L2-25-0-20-R18-Z	Q65110A3714	Mini TOPLED	Portfolio clearance	LP M675-M2P1-25-0-30-R18-Z	Q65110A2399	Mini TOPLED
LP M676-K2L2-25-0-20-R18-Z	Q65110A3714	Mini TOPLED	Portfolio clearance	KP DELMS1.22-MGNH-25-E6L6-20-S	Q65112A4856	TOPLED
LP M676-K2M1-23-0-20-R18-Z-XX	Q65112A2502	Mini TOPLED	Portfolio clearance	LP M675-M2P1-25-0-30-R18-Z	Q65110A2399	Mini TOPLED
LP M676-K2M1-23-0-20-R18-Z-XX	Q65112A2502	Mini TOPLED	Portfolio clearance	KP DELMS1.22-MGNH-25-E6L6-20-S	Q65112A4856	TOPLED
LP M676-K2M1-25-0-20-R18-Z	Q65110A2390	Mini TOPLED	Portfolio clearance	LP M675-M2P1-25-0-30-R18-Z	Q65110A2399	Mini TOPLED
LP M676-K2M1-25-0-20-R18-Z	Q65110A2390	Mini TOPLED	Portfolio clearance	KP DELMS1.22-MGNH-25-E6L6-20-S	Q65112A4856	TOPLED
LP M676-K2M1-45-0-20-R18-Z	Q65111A1369	Mini TOPLED	Portfolio clearance	LP M675-M2P1-25-0-30-R18-Z	Q65110A2399	Mini TOPLED
LP M676-K2M1-45-0-20-R18-Z	Q65111A1369	Mini TOPLED	Portfolio clearance	KP DELMS1.22-MGNH-25-E6L6-20-S	Q65112A4856	TOPLED
LP M676-L1M1-34-0-20-R18-Z	Q65110A8728	Mini TOPLED	Portfolio clearance	LP M675-M2P1-25-0-30-R18-Z	Q65110A2399	Mini TOPLED
LP M676-L1M1-34-0-20-R18-Z	Q65110A8728	Mini TOPLED	Portfolio clearance	KP DELMS1.22-MGNH-25-E6L6-20-S	Q65112A4856	TOPLED
LP M676-L1M1-34-0-20-R18-Z-TW	Q65110A7164	Mini TOPLED	Portfolio clearance	LP M675-M2P1-25-0-30-R18-Z	Q65110A2399	Mini TOPLED

DISCONTINUED				NEW (REPLACEMENT)		
Device	Ordering Code	Brand	Reason for discontinuation	Device	Datasheet Ordering Code	Brand
LP M676-L1M1-34-0-20-R18-Z-TW	Q65110A7164	Mini TOPLED	Portfolio clearance	KP DELMS1.22-MGNH-25-E6L6-20-S	Q65112A4856	TOPLED
LP M676-L1M2-25-0-20-R18-Z	Q65110A7809	Mini TOPLED	Portfolio clearance	LP M675-M2P1-25-0-30-R18-Z	Q65110A2399	Mini TOPLED
LP M676-L1M2-25-0-20-R18-Z	Q65110A7809	Mini TOPLED	Portfolio clearance	KP DELMS1.22-MGNH-25-E6L6-20-S	Q65112A4856	TOPLED
LP M676-L2M2-25-0-20-R18-Z-VIS	Q65110A9196	Mini TOPLED	Portfolio clearance	LP M675-M2P1-25-0-30-R18-Z	Q65110A2399	Mini TOPLED
LP M676-L2M2-25-0-20-R18-Z-VIS	Q65110A9196	Mini TOPLED	Portfolio clearance	KP DELMS1.22-MGNH-25-E6L6-20-S	Q65112A4856	TOPLED
LP M676-L2M2-34-0-20-R18-Z-XX	Q65110A8829	Mini TOPLED	Portfolio clearance	LP M675-M2P1-25-0-30-R18-Z	Q65110A2399	Mini TOPLED
LP M676-L2M2-34-0-20-R18-Z-XX	Q65110A8829	Mini TOPLED	Portfolio clearance	KP DELMS1.22-MGNH-25-E6L6-20-S	Q65112A4856	TOPLED
<b>LP M67K</b>						
LP M67K-D2F1-25-0-2-R18-Z	Q65110A2396	Mini TOPLED	Portfolio clearance	LP M675-M2P1-25-0-30-R18-Z	Q65110A2399	Mini TOPLED
LP M67K-D2F1-25-0-2-R18-Z	Q65110A2396	Mini TOPLED	Portfolio clearance	KP DELLS1.22-FGGI-25-0-2-S	Q65112A4851	TOPLED
LP M67K-D2G1-25-0-2-R18-Z	Q65110A2398	Mini TOPLED	Portfolio clearance	LP M675-M2P1-25-0-30-R18-Z	Q65110A2399	Mini TOPLED
LP M67K-D2G1-25-0-2-R18-Z	Q65110A2398	Mini TOPLED	Portfolio clearance	KP DELLS1.22-FGGI-25-0-2-S	Q65112A4851	TOPLED
LP M67K-E1F1-34-0-2-R18-Z	Q65110A3521	Mini TOPLED	Portfolio clearance	LP M675-M2P1-25-0-30-R18-Z	Q65110A2399	Mini TOPLED
LP M67K-E1F1-34-0-2-R18-Z	Q65110A3521	Mini TOPLED	Portfolio clearance	KP DELLS1.22-FGGI-25-0-2-S	Q65112A4851	TOPLED
LP M67K-E2G1-25-0-2-R18-Z	Q65110A2397	Mini TOPLED	Portfolio clearance	LP M675-M2P1-25-0-30-R18-Z	Q65110A2399	Mini TOPLED
LP M67K-E2G1-25-0-2-R18-Z	Q65110A2397	Mini TOPLED	Portfolio clearance	KP DELLS1.22-FGGI-25-0-2-S	Q65112A4851	TOPLED
LP M67K-F1G1-25-0-2-R18-Z-XX	Q65112A0006	Mini TOPLED	Portfolio clearance	LP M675-M2P1-25-0-30-R18-Z	Q65110A2399	Mini TOPLED
LP M67K-F1G1-25-0-2-R18-Z-XX	Q65112A0006	Mini TOPLED	Portfolio clearance	KP DELLS1.22-FGGI-25-0-2-S	Q65112A4851	TOPLED
<b>LS M670</b>						



DISCONTINUED				NEW (REPLACEMENT)		
Device	Ordering Code	Brand	Reason for discontinuation	Device	Datasheet Ordering Code	Brand
LS M670-H2K1-1-0-10-R18-Z	Q65110A2381	Mini TOPLED	Portfolio clearance	LS M676-P2S1-1-0-20-R18-Z	Q65110A2364	Mini TOPLED
LS M670-H2K1-1-0-10-R18-Z	Q65110A2381	Mini TOPLED	Portfolio clearance	KS DELMS1.22-QHRI-68-E6L4-20-R18	Q65112A1792	TOPLED
LS M670-H2L1-1-0-10-R18-Z	Q65110A2383	Mini TOPLED	Portfolio clearance	LS M676-P2S1-1-0-20-R18-Z	Q65110A2364	Mini TOPLED
LS M670-H2L1-1-0-10-R18-Z	Q65110A2383	Mini TOPLED	Portfolio clearance	KS DELMS1.22-QHRI-68-E6L4-20-R18	Q65112A1792	TOPLED
LS M670-J1K2-1-0-10-R18-Z-KS	Q65110A5165	Mini TOPLED	Portfolio clearance	LS M676-P2S1-1-0-20-R18-Z	Q65110A2364	Mini TOPLED
LS M670-J1K2-1-0-10-R18-Z-KS	Q65110A5165	Mini TOPLED	Portfolio clearance	KS DELMS1.22-QHRI-68-E6L4-20-R18	Q65112A1792	TOPLED
LS M670-J2K2-1-0-10-R18-Z	Q65110A4337	Mini TOPLED	Portfolio clearance	LS M676-P2S1-1-0-20-R18-Z	Q65110A2364	Mini TOPLED
LS M670-J2K2-1-0-10-R18-Z	Q65110A4337	Mini TOPLED	Portfolio clearance	KS DELMS1.22-QHRI-68-E6L4-20-R18	Q65112A1792	TOPLED
LS M670-J2K2-1-0-10-R18-Z-DL	Q62703Q6125	Mini TOPLED	Portfolio clearance	LS M676-P2S1-1-0-20-R18-Z	Q65110A2364	Mini TOPLED
LS M670-J2K2-1-0-10-R18-Z-DL	Q62703Q6125	Mini TOPLED	Portfolio clearance	KS DELMS1.22-QHRI-68-E6L4-20-R18	Q65112A1792	TOPLED
LS M670-J2L1-1-0-10-R18-Z	Q65110A2382	Mini TOPLED	Portfolio clearance	LS M676-P2S1-1-0-20-R18-Z	Q65110A2364	Mini TOPLED
LS M670-J2L1-1-0-10-R18-Z	Q65110A2382	Mini TOPLED	Portfolio clearance	KS DELMS1.22-QHRI-68-E6L4-20-R18	Q65112A1792	TOPLED
LS M670-K1K2-1-0-10-R18-Z-XX	Q65112A2503	Mini TOPLED	Portfolio clearance	LS M676-P2S1-1-0-20-R18-Z	Q65110A2364	Mini TOPLED
LS M670-K1K2-1-0-10-R18-Z-XX	Q65112A2503	Mini TOPLED	Portfolio clearance	KS DELMS1.22-QHRI-68-E6L4-20-R18	Q65112A1792	TOPLED
<b>LT MZ73</b>			Portfolio clearance	KT DELMS1.12-QHRH-25-26E6-10-S	Q65112A5167	TOPLED
<b>LY MZ7F</b>			Portfolio clearance	KY DELLS1.22-KGLH-26-0-2-S	Q65112A4853	TOPLED

# Products Affected by Product Discontinuation Notification

**Number:** OS-PDN-2019-041

**Name:** Product Discontinuation due to Portfolio Clearance

**Release Date:** 7/15/2019

**Last Order:** 1/15/2020

**Last Delivery:** 7/15/2020

## DISCONTINUED

## NEW (REPLACEMENT)

Product	QNumber	QNumber Description	Part Number	Product	QNumber	QNumber Description	Part Number
LA M67B	Q65110A2368	LA M67B-T2V1-1-0-30-R18-Z	LA M67B-T2V1-1-Z	LA M67F	Q65111A1848	LA M67F-V1AB-24-1-20-R18-Z	LA M67F-V1AB-24-Z
LA M67B	Q65110A2368	LA M67B-T2V1-1-0-30-R18-Z	LA M67B-T2V1-1-Z	KR DELPS1.	Q65112A5163	KR DELPS1.22-UHVI-26-H3Q4-20-S	
LA M67B	Q65110A8066	LA M67B-T2U2-1-0-30-R18-Z-KS	LA M67B-T2U2-1-Z-KS	LA M67F	Q65111A1848	LA M67F-V1AB-24-1-20-R18-Z	LA M67F-V1AB-24-Z
LA M67B	Q65110A8066	LA M67B-T2U2-1-0-30-R18-Z-KS	LA M67B-T2U2-1-Z-KS	KR DELPS1.	Q65112A5163	KR DELPS1.22-UHVI-26-H3Q4-20-S	
LA M67B	Q65110A9150	LA M67B-T2U2-1-0-30-R18-Z	LA M67B-T2U2-1-Z	KR DELPS1.	Q65112A5163	KR DELPS1.22-UHVI-26-H3Q4-20-S	
LA M67B	Q65110A9150	LA M67B-T2U2-1-0-30-R18-Z	LA M67B-T2U2-1-Z	LA M67F	Q65111A1848	LA M67F-V1AB-24-1-20-R18-Z	LA M67F-V1AB-24-Z
LCG M67S	Q65110A4588	LCG M67S-P1R1-4-0-10-R18-Z	LCG M67S-P1R1-4-Z				
LCG M67S	Q65110A4589	LCG M67S-P2Q2-4-0-10-R18-Z	LCG M67S-P2Q2-4-Z				
LCG M67S	Q65110A4633	LCG M67S-Q1R1-4-0-10-R18-Z	LCG M67S-Q1R1-4-Z				
LCG M67S	Q65111A8384	LCG M67S-P2Q2-4-0-10-R18-Z-APS	LCG M67S-P2Q2-4-APS				
LCL M67S	Q65110A2287	LCL M67S-P2Q2-45-0-10-R18-Z	LCL M67S-P2Q2-45-Z				
LCL M67S	Q65110A3185	LCL M67S-P2Q2-4-0-10-R18-Z	LCL M67S-P2Q2-4-Z				
LCL M67S	Q65110A3214	LCL M67S-Q1Q2-4-0-10-R18-Z	LCL M67S-Q1Q2-4-Z				
LG M670	Q65110A2372	LG M670-J2L1-1-0-10-R18-Z	LG M670-J2L1-1-Z	LG M67K	Q65110A2395	LG M67K-G1J2-24-0-2-R18-Z	LG M67K-G1J2-24-Z
LG M670	Q65110A2373	LG M670-K2M1-1-0-10-R18-Z	LG M670-K2M1-1-Z	LG M67K	Q65110A2395	LG M67K-G1J2-24-0-2-R18-Z	LG M67K-G1J2-24-Z
LG M670	Q65110A2374	LG M670-J2M1-1-0-10-R18-Z	LG M670-J2M1-1-Z	LG M67K	Q65110A2395	LG M67K-G1J2-24-0-2-R18-Z	LG M67K-G1J2-24-Z
LG M670	Q65110A3672	LG M670-K1L2-1-0-10-R33-Z	LG M670-K1L2-1-Z	LG M67K	Q65110A2395	LG M67K-G1J2-24-0-2-R18-Z	LG M67K-G1J2-24-Z
LG M670	Q65110A4302	LG M670-J2K2-1-0-10-R18-Z	LG M670-J2K2-1-Z	LG M67K	Q65110A2395	LG M67K-G1J2-24-0-2-R18-Z	LG M67K-G1J2-24-Z
LG M670	Q65110A5120	LG M670-K1L2-1-0-10-R18-Z-KS	LG M670-K1L2-1-Z-KS	LG M67K	Q65110A2395	LG M67K-G1J2-24-0-2-R18-Z	LG M67K-G1J2-24-Z
LG M676	Q65110A2389	LG M676-N2Q1-24-0-20-R18-Z	LG M676-N2Q1-24-Z	LG M67K	Q65110A2395	LG M67K-G1J2-24-0-2-R18-Z	LG M67K-G1J2-24-Z
LG M676	Q65110A2389	LG M676-N2Q1-24-0-20-R18-Z	LG M676-N2Q1-24-Z	KG DELMS1.	Q65112A4854	KG DELMS1.22-PHQI-24-E6L6-20-S	
LG M676	Q65110A3708	LG M676-N2P2-24-0-20-R18-Z	LG M676-N2P2-24-Z	LG M67K	Q65110A2395	LG M67K-G1J2-24-0-2-R18-Z	LG M67K-G1J2-24-Z
LG M676	Q65110A3708	LG M676-N2P2-24-0-20-R18-Z	LG M676-N2P2-24-Z	KG DELMS1.	Q65112A4854	KG DELMS1.22-PHQI-24-E6L6-20-S	
LG M676	Q65110A4303	LG M676-P1Q1-24-0-20-R18-Z	LG M676-P1Q1-24-Z	KG DELMS1.	Q65112A4854	KG DELMS1.22-PHQI-24-E6L6-20-S	
LG M676	Q65110A4303	LG M676-P1Q1-24-0-20-R18-Z	LG M676-P1Q1-24-Z	LG M67K	Q65110A2395	LG M67K-G1J2-24-0-2-R18-Z	LG M67K-G1J2-24-Z
LG M676	Q65110A6024	LG M676-P1Q1-24-0-20-R33-Z-HE	LG M676-P1Q1-24-Z-HE	KG DELMS1.	Q65112A4854	KG DELMS1.22-PHQI-24-E6L6-20-S	
LG M676	Q65110A6024	LG M676-P1Q1-24-0-20-R33-Z-HE	LG M676-P1Q1-24-Z-HE	LG M67K	Q65110A2395	LG M67K-G1J2-24-0-2-R18-Z	LG M67K-G1J2-24-Z
LG M676	Q65110A7023	LG M676-P2Q2-24-0-20-R18-Z	LG M676-P2Q2-24-Z	KG DELMS1.	Q65112A4854	KG DELMS1.22-PHQI-24-E6L6-20-S	
LG M676	Q65110A7023	LG M676-P2Q2-24-0-20-R18-Z	LG M676-P2Q2-24-Z	LG M67K	Q65110A2395	LG M67K-G1J2-24-0-2-R18-Z	LG M67K-G1J2-24-Z
LG M676	Q65110A8152	LG M676-N2Q1-23-0-20-R18-Z	LG M676-N2Q1-23-S-Z	KG DELMS1.	Q65112A4854	KG DELMS1.22-PHQI-24-E6L6-20-S	
LG M676	Q65110A8152	LG M676-N2Q1-23-0-20-R18-Z	LG M676-N2Q1-23-S-Z	LG M67K	Q65110A2395	LG M67K-G1J2-24-0-2-R18-Z	LG M67K-G1J2-24-Z
LG M676	Q65110A8907	LG M676-P2Q1-3-0-20-R18-Z-JC	LG M676-P2Q1-3-Z-JC	KG DELMS1.	Q65112A4854	KG DELMS1.22-PHQI-24-E6L6-20-S	

**DISCONTINUED**

**NEW (REPLACEMENT)**

<i>Product</i>	<i>QNumber</i>	<i>QNumber Description</i>	<i>Part Number</i>	<i>Product</i>	<i>QNumber</i>	<i>QNumber Description</i>	<i>Part Number</i>
LG M676	Q65110A8907	LG M676-P2Q1-3-0-20-R18-Z-JC	LG M676-P2Q1-3-Z-JC	LG M67K	Q65110A2395	LG M67K-G1J2-24-0-2-R18-Z	LG M67K-G1J2-24-Z
LO M670	Q65110A2375	LO M670-H2K1-24-0-10-R18-Z	LO M670-H2K1-24-Z	LO M67K	Q65110A2055	LO M67K-J2M1-24-0-2-R18-Z	LO M67K-J2M1-24-Z
LO M670	Q65110A2376	LO M670-J2L1-24-0-10-R18-Z	LO M670-J2L1-24-Z	LO M67K	Q65110A2055	LO M67K-J2M1-24-0-2-R18-Z	LO M67K-J2M1-24-Z
LO M670	Q65110A2377	LO M670-H2L1-24-0-10-R18-Z	LO M670-H2L1-24-Z	LO M67K	Q65110A2055	LO M67K-J2M1-24-0-2-R18-Z	LO M67K-J2M1-24-Z
LO M670	Q65110A6120	LO M670-J1K2-34-0-10-R18-Z	LO M670-J1K2-34-Z	LO M67K	Q65110A2055	LO M67K-J2M1-24-0-2-R18-Z	LO M67K-J2M1-24-Z
LO MZ7F		LO MZ7F		KO DELPS1.	Q65112A3997	KO DELPS1.22-UGVI-24-H3Q4-20-S	
LP M676	Q65110A2390	LP M676-K2M1-25-0-20-R18-Z	LP M676-K2M1-25-Z	KP DELMS1.	Q65112A4856	KP DELMS1.22-MGNH-25-E6L6-20-S	
LP M676	Q65110A2390	LP M676-K2M1-25-0-20-R18-Z	LP M676-K2M1-25-Z	LP M675	Q65110A2399	LP M675-M2P1-25-0-30-R18-Z	LP M675-M2P1-25-Z
LP M676	Q65110A3714	LP M676-K2L2-25-0-20-R18-Z	LP M676-K2L2-25-Z	KP DELMS1.	Q65112A4856	KP DELMS1.22-MGNH-25-E6L6-20-S	
LP M676	Q65110A3714	LP M676-K2L2-25-0-20-R18-Z	LP M676-K2L2-25-Z	LP M675	Q65110A2399	LP M675-M2P1-25-0-30-R18-Z	LP M675-M2P1-25-Z
LP M676	Q65110A7164	LP M676-L1M1-34-0-20-R18-Z-TW	LP M676-L1M1-34-Z-TW	KP DELMS1.	Q65112A4856	KP DELMS1.22-MGNH-25-E6L6-20-S	
LP M676	Q65110A7164	LP M676-L1M1-34-0-20-R18-Z-TW	LP M676-L1M1-34-Z-TW	LP M675	Q65110A2399	LP M675-M2P1-25-0-30-R18-Z	LP M675-M2P1-25-Z
LP M676	Q65110A7809	LP M676-L1M2-25-0-20-R18-Z	LP M676-L1M2-25-Z	LP M675	Q65110A2399	LP M675-M2P1-25-0-30-R18-Z	LP M675-M2P1-25-Z
LP M676	Q65110A7809	LP M676-L1M2-25-0-20-R18-Z	LP M676-L1M2-25-Z	KP DELMS1.	Q65112A4856	KP DELMS1.22-MGNH-25-E6L6-20-S	
LP M676	Q65110A8728	LP M676-L1M1-34-0-20-R18-Z	LP M676-L1M1-34-Z	LP M675	Q65110A2399	LP M675-M2P1-25-0-30-R18-Z	LP M675-M2P1-25-Z
LP M676	Q65110A8728	LP M676-L1M1-34-0-20-R18-Z	LP M676-L1M1-34-Z	KP DELMS1.	Q65112A4856	KP DELMS1.22-MGNH-25-E6L6-20-S	
LP M676	Q65110A8829	LP M676-L2M2-34-0-20-R18-Z-XX	LP M676-L2M2-34-XX	LP M675	Q65110A2399	LP M675-M2P1-25-0-30-R18-Z	LP M675-M2P1-25-Z
LP M676	Q65110A8829	LP M676-L2M2-34-0-20-R18-Z-XX	LP M676-L2M2-34-XX	KP DELMS1.	Q65112A4856	KP DELMS1.22-MGNH-25-E6L6-20-S	
LP M676	Q65110A9196	LP M676-L2M2-25-0-20-R18-Z-VIS	LP M676-L2M2-25-Z-VIS	KP DELMS1.	Q65112A4856	KP DELMS1.22-MGNH-25-E6L6-20-S	
LP M676	Q65110A9196	LP M676-L2M2-25-0-20-R18-Z-VIS	LP M676-L2M2-25-Z-VIS	LP M675	Q65110A2399	LP M675-M2P1-25-0-30-R18-Z	LP M675-M2P1-25-Z
LP M676	Q65111A1369	LP M676-K2M1-45-0-20-R18-Z	LP M676-K2M1-45-Z	LP M675	Q65110A2399	LP M675-M2P1-25-0-30-R18-Z	LP M675-M2P1-25-Z
LP M676	Q65111A1369	LP M676-K2M1-45-0-20-R18-Z	LP M676-K2M1-45-Z	KP DELMS1.	Q65112A4856	KP DELMS1.22-MGNH-25-E6L6-20-S	
LP M676	Q65112A2502	LP M676-K2M1-23-0-20-R18-Z-XX		LP M675	Q65110A2399	LP M675-M2P1-25-0-30-R18-Z	LP M675-M2P1-25-Z
LP M676	Q65112A2502	LP M676-K2M1-23-0-20-R18-Z-XX		KP DELMS1.	Q65112A4856	KP DELMS1.22-MGNH-25-E6L6-20-S	
LP M67K	Q65110A2396	LP M67K-D2F1-25-0-2-R18-Z	LP M67K-D2F1-25-Z	KP DELLS1.2	Q65112A4851	KP DELLS1.22-FGGI-25-0-2-S	
LP M67K	Q65110A2396	LP M67K-D2F1-25-0-2-R18-Z	LP M67K-D2F1-25-Z	LP M675	Q65110A2399	LP M675-M2P1-25-0-30-R18-Z	LP M675-M2P1-25-Z
LP M67K	Q65110A2397	LP M67K-E2G1-25-0-2-R18-Z	LP M67K-E2G1-25-Z	KP DELLS1.2	Q65112A4851	KP DELLS1.22-FGGI-25-0-2-S	
LP M67K	Q65110A2397	LP M67K-E2G1-25-0-2-R18-Z	LP M67K-E2G1-25-Z	LP M675	Q65110A2399	LP M675-M2P1-25-0-30-R18-Z	LP M675-M2P1-25-Z
LP M67K	Q65110A2398	LP M67K-D2G1-25-0-2-R18-Z	LP M67K-D2G1-25-Z	KP DELLS1.2	Q65112A4851	KP DELLS1.22-FGGI-25-0-2-S	
LP M67K	Q65110A2398	LP M67K-D2G1-25-0-2-R18-Z	LP M67K-D2G1-25-Z	LP M675	Q65110A2399	LP M675-M2P1-25-0-30-R18-Z	LP M675-M2P1-25-Z
LP M67K	Q65110A3521	LP M67K-E1F1-34-0-2-R18-Z	LP M67K-E1F1-34-0-2-R18-Z	LP M675	Q65110A2399	LP M675-M2P1-25-0-30-R18-Z	LP M675-M2P1-25-Z
LP M67K	Q65110A3521	LP M67K-E1F1-34-0-2-R18-Z	LP M67K-E1F1-34-0-2-R18-Z	KP DELLS1.2	Q65112A4851	KP DELLS1.22-FGGI-25-0-2-S	
LP M67K	Q65110A0006	LP M67K-F1G1-25-0-2-R18-Z-XX	LP M67K-F1G1-25-XX	LP M675	Q65110A2399	LP M675-M2P1-25-0-30-R18-Z	LP M675-M2P1-25-Z
LP M67K	Q65112A0006	LP M67K-F1G1-25-0-2-R18-Z-XX	LP M67K-F1G1-25-XX	KP DELLS1.2	Q65112A4851	KP DELLS1.22-FGGI-25-0-2-S	
LS M670	Q62703Q6125	LS M670-J2K2-1-0-10-R18-Z-DL	LS M670-J2K2-1-Z-DL	LS M676	Q65110A2364	LS M676-P2S1-1-0-20-R18-Z	LS M676-P2S1-1-Z
LS M670	Q62703Q6125	LS M670-J2K2-1-0-10-R18-Z-DL	LS M670-J2K2-1-Z-DL	KS DELMS1.	Q65112A1792	KS DELMS1.22-QHRI-68-E6L4-20-R18	KS DELLS1.22-Q1R2-68-E6L4
LS M670	Q65110A2381	LS M670-H2K1-1-0-10-R18-Z	LS M670-H2K1-1-Z	KS DELMS1.	Q65112A1792	KS DELMS1.22-QHRI-68-E6L4-20-R18	KS DELLS1.22-Q1R2-68-E6L4
LS M670	Q65110A2382	LS M670-J2L1-1-0-10-R18-Z	LS M670-J2L1-1-Z	LS M676	Q65110A2364	LS M676-P2S1-1-0-20-R18-Z	LS M676-P2S1-1-Z
LS M670	Q65110A2382	LS M670-J2L1-1-0-10-R18-Z	LS M670-J2L1-1-Z	KS DELMS1.	Q65112A1792	KS DELMS1.22-QHRI-68-E6L4-20-R18	KS DELLS1.22-Q1R2-68-E6L4
LS M670	Q65110A2383	LS M670-H2L1-1-0-10-R18-Z	LS M670-H2L1-1-Z	LS M676	Q65110A2364	LS M676-P2S1-1-0-20-R18-Z	LS M676-P2S1-1-Z
LS M670	Q65110A2383	LS M670-H2L1-1-0-10-R18-Z	LS M670-H2L1-1-Z	KS DELMS1.	Q65112A1792	KS DELMS1.22-QHRI-68-E6L4-20-R18	KS DELLS1.22-Q1R2-68-E6L4
LS M670	Q65110A4337	LS M670-J2K2-1-0-10-R18-Z	LS M670-J2K2-1-Z	LS M676	Q65110A2364	LS M676-P2S1-1-0-20-R18-Z	LS M676-P2S1-1-Z
LS M670	Q65110A4337	LS M670-J2K2-1-0-10-R18-Z	LS M670-J2K2-1-Z	KS DELMS1.	Q65112A1792	KS DELMS1.22-QHRI-68-E6L4-20-R18	KS DELLS1.22-Q1R2-68-E6L4



***DISCONTINUED***

***NEW (REPLACEMENT)***

<b><i>Product</i></b>	<b><i>QNumber</i></b>	<b><i>QNumber Description</i></b>	<b><i>Part Number</i></b>	<b><i>Product</i></b>	<b><i>QNumber</i></b>	<b><i>QNumber Description</i></b>	<b><i>Part Number</i></b>
LS M670	Q65110A5165	LS M670-J1K2-1-0-10-R18-Z-KS	LS M670-J1K2-1-Z-KS	LS M676	Q65110A2364	LS M676-P2S1-1-0-20-R18-Z	LS M676-P2S1-1-Z
LS M670	Q65110A5165	LS M670-J1K2-1-0-10-R18-Z-KS	LS M670-J1K2-1-Z-KS	KS DELMS1.	Q65112A1792	KS DELMS1.22-QHRI-68-E6L4-20-R18	KS DELLS1.22-Q1R2-68-E6L4
LS M670	Q65112A2503	LS M670-K1K2-1-0-10-R18-Z-XX		LS M676	Q65110A2364	LS M676-P2S1-1-0-20-R18-Z	LS M676-P2S1-1-Z
LS M670	Q65112A2503	LS M670-K1K2-1-0-10-R18-Z-XX		KS DELMS1.	Q65112A1792	KS DELMS1.22-QHRI-68-E6L4-20-R18	KS DELLS1.22-Q1R2-68-E6L4
LT MZ73		LT MZ73		KT DELMS1.	Q65112A5167	KT DELMS1.12-QHRH-25-26E6-10-S	
LY MZ7F		LY MZ7F		KY DELLS1.2	Q65112A4853	KY DELLS1.22-KGLH-26-0-2-S	