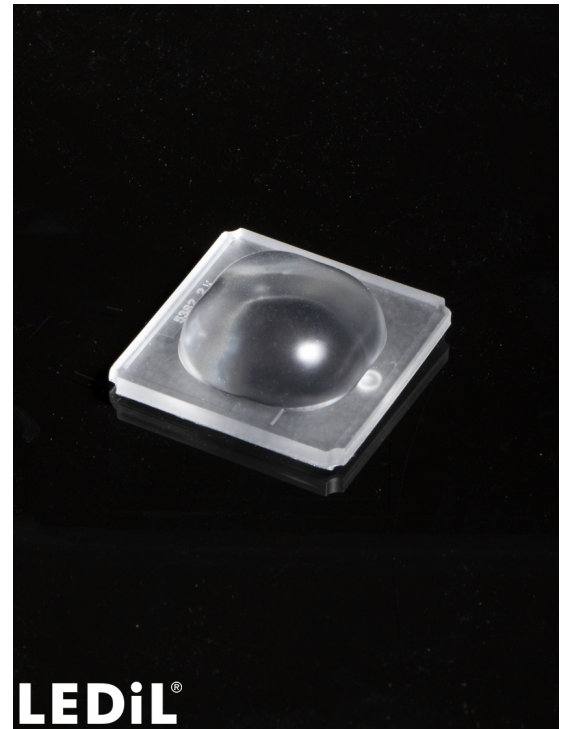


JENNY-CY-G2

~105° + 105° batwing light distribution for canopy and symmetrical tunnel lighting.

TECHNICAL SPECIFICATIONS:

Dimensions	35.0 x 35.0 mm
Height	11.5 mm
Fastening	tape
ROHS compliant	yes ⓘ

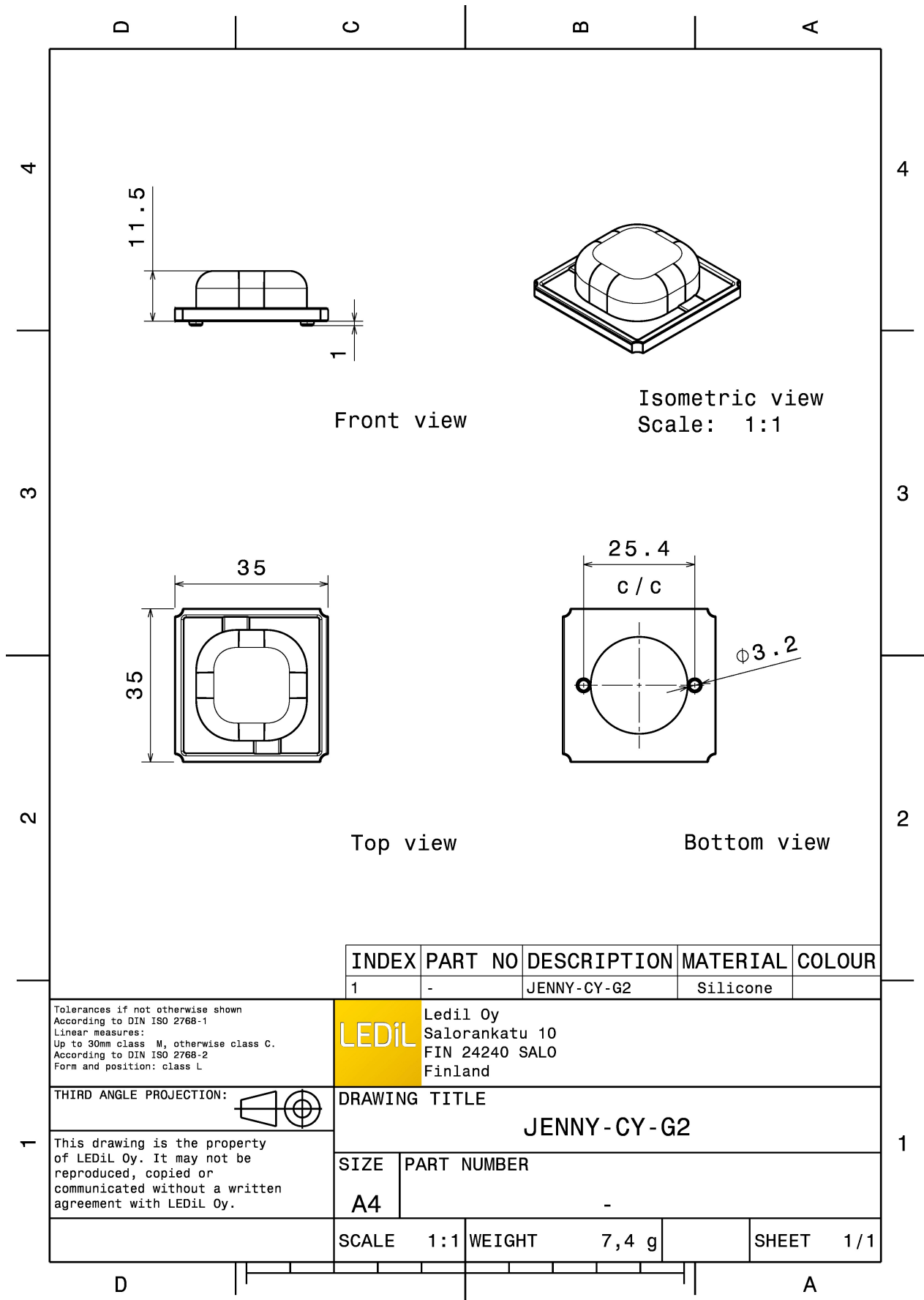


MATERIAL SPECIFICATIONS:

Component	Type	Material	Colour	Finish
JENNY-CY-G2	Single lens	Silicone	clear	

ORDERING INFORMATION:

Component	Qty in box	MOQ	MPQ	Box weight (kg)
F15382_JENNY-CY-G2 » Box size: 480 x 280 x 300 mm	1200	120	60	9.1



INDEX	PART NO	DESCRIPTION	MATERIAL	COLOUR
1	-	JENNY-CY-G2	Silicone	

Tolerances if not otherwise shown
According to DIN ISO 2768-1
Linear measures:
Up to 30mm class M, otherwise class C.
According to DIN ISO 2768-2
Form and position: class L

LEDiL Ledil Oy
Salorankatu 10
FIN 24240 SALO
Finland

THIRD ANGLE PROJECTION:

DRAWING TITLE
JENNY-CY-G2

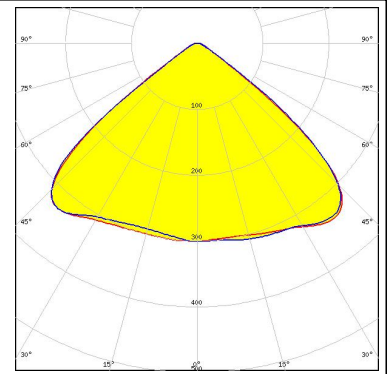
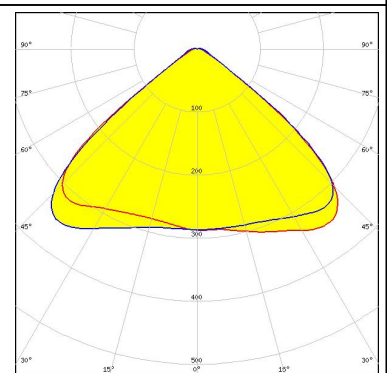
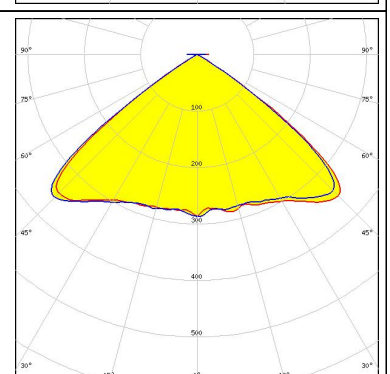
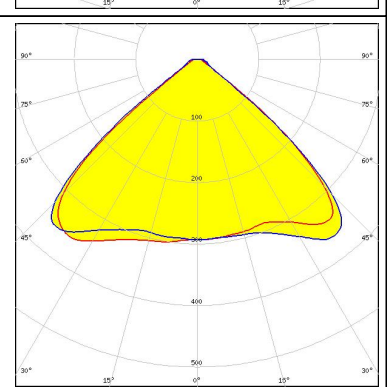
This drawing is the property of LEDiL Oy. It may not be reproduced, copied or communicated without a written agreement with LEDiL Oy.

SIZE	PART NUMBER
A4	-

SCALE	1:1	WEIGHT	7,4 g	SHEET	1/1
-------	-----	--------	-------	-------	-----

See also our general installation guide: www.ledil.com/installation_guide

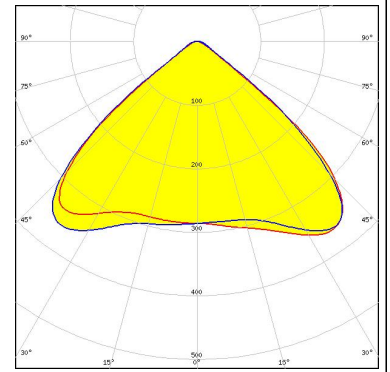
PHOTOMETRIC DATA (MEASURED):

<p>CREE ⇄ LED</p> <p>LED MK-R FWHM / FWTM 105.0° / 120.0° Efficiency % LEDs/each optic 1 Light colour White Required components:</p>	
<p>CREE ⇄ LED</p> <p>LED XHP50 FWHM / FWTM 102.0° / 118.0° Efficiency % LEDs/each optic 1 Light colour White Required components:</p>	
<p>CREE ⇄ LED</p> <p>LED XHP50.2 FWHM / FWTM 106.0° / 110.0° Efficiency % LEDs/each optic 1 Light colour White Required components:</p>	
<p>CREE ⇄ LED</p> <p>LED XM-L EZW FWHM / FWTM 103.0° / 119.0° Efficiency 94 % Peak intensity 0.5 cd/m LEDs/each optic 1 Light colour White Required components:</p>	

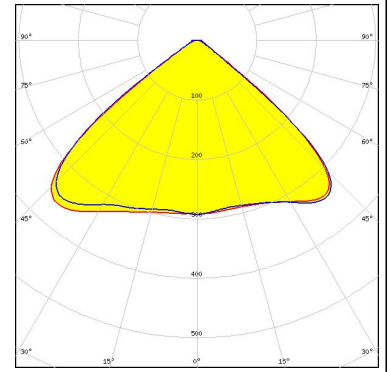
PHOTOMETRIC DATA (MEASURED):



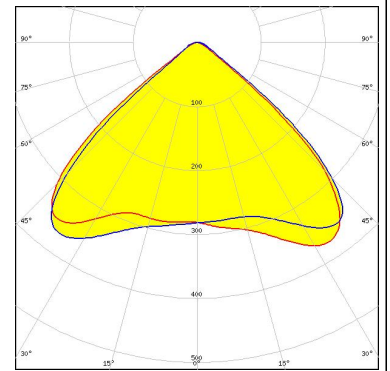
LED LUXEON 5258
FWHM / FWTM 103.0° / 118.0 + 120.0°
Efficiency %
LEDs/each optic 1
Light colour White
Required components:



LED LUXEON M/MX
FWHM / FWTM 102.0° / 120.0°
Efficiency %
LEDs/each optic 1
Light colour White
Required components:



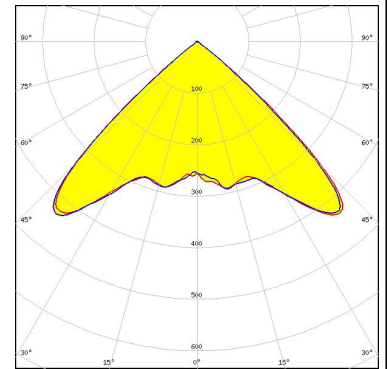
LED Duris S8
FWHM / FWTM 102.0° / 118.0°
Efficiency %
LEDs/each optic 1
Light colour White
Required components:



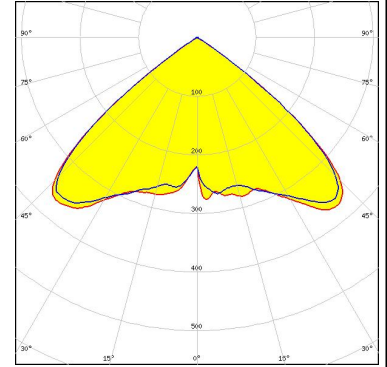
PHOTOMETRIC DATA (SIMULATED):



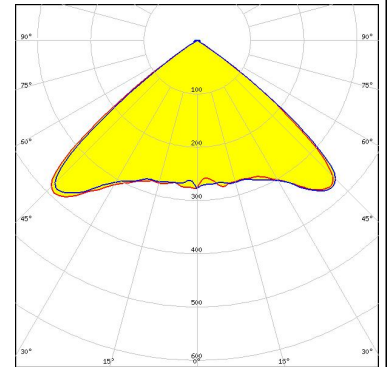
LED J Series 2835
 FWHM / FWTM 95.0° / 104.0°
 Efficiency 96 %
 Peak intensity 0.7 cd/lm
 LEDs/each optic 1
 Light colour White
 Required components:



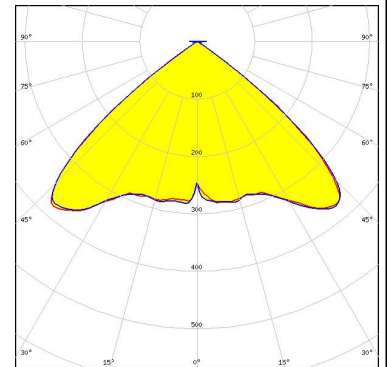
LED MX-6
 FWHM / FWTM 102.0° / 118.0°
 Efficiency 93 %
 LEDs/each optic 1
 Light colour White
 Required components:



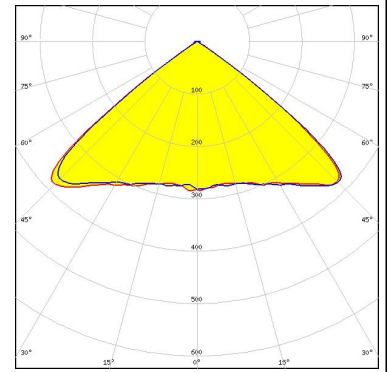
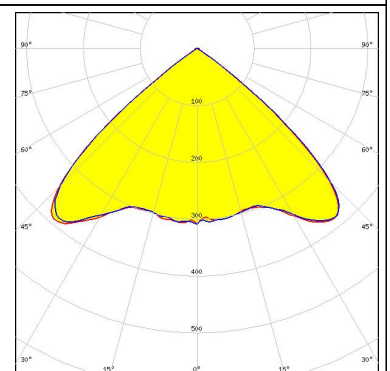
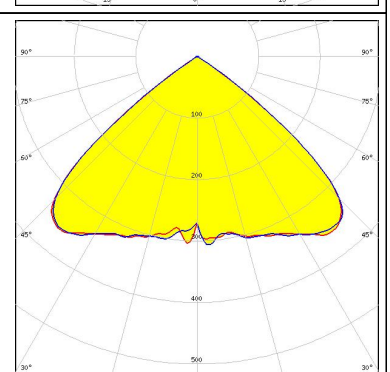
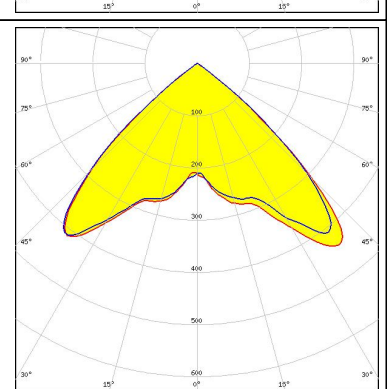
LED XHP50.3 HD
 FWHM / FWTM 103.0 + 102.0° / 112.0°
 Efficiency 96 %
 Peak intensity 0.5 cd/lm
 LEDs/each optic 1
 Light colour White
 Required components:



LED XHP50.3 HI
 FWHM / FWTM 102.0° / 110.0°
 Efficiency 97 %
 Peak intensity 0.5 cd/lm
 LEDs/each optic 1
 Light colour White
 Required components:



PHOTOMETRIC DATA (SIMULATED):

<p>CREE LED</p> <p>LED: XHP70.3 HD FWHM / FWTM: 105.0° / 112.0° Efficiency: 96 % Peak intensity: 0.5 cd/lm LEDs/each optic: 1 Light colour: White Required components:</p>	
<p>LUMILEDS</p> <p>LED: LUXEON 5050 Round LES FWHM / FWTM: 100.0° / 110.0° Efficiency: 94 % Peak intensity: 0.6 cd/lm LEDs/each optic: 1 Light colour: White Required components:</p>	
<p>LUMILEDS</p> <p>LED: LUXEON 7070 FWHM / FWTM: 102.0° / 112.0° Efficiency: 93 % Peak intensity: 0.5 cd/lm LEDs/each optic: 1 Light colour: White Required components:</p>	
<p>NICHIA</p> <p>LED: NCSU334A FWHM / FWTM: 96.0° / 106.0° Efficiency: 71 % LEDs/each optic: 1 Light colour: UV-C Required components:</p> <p>The UVC LED result tolerance is ±10 %</p>	

PHOTOMETRIC DATA (SIMULATED):

<p>NICHIA</p> <p>LED NVSxE21A FWHM / FWTM 96.0° / 108.0° Efficiency 94 % Peak intensity 0.6 cd/lm LEDs/each optic 4 Light colour White Required components:</p>	
<p>OSRAM <small>Opto Semiconductors</small></p> <p>LED OSCONIQ P 7070 FWHM / FWTM 100.0° / 106.0° Efficiency 93 % Peak intensity 0.5 cd/lm LEDs/each optic 1 Light colour White Required components:</p>	
<p>SEOL <small>SEOUL SEMICONDUCTOR</small></p> <p>LED Z8Y22 FWHM / FWTM 102.0° / 130.0 + 110.0° Efficiency 93 % Peak intensity 0.6 cd/lm LEDs/each optic 1 Light colour White Required components:</p>	

GENERAL INFORMATION:

NOTE: The typical beam angle will be changed by different color, chip size and chip position tolerance. The typical total beam angle is the full angle measured where the luminous intensity is half of the peak value.

MATERIALS:

As part of our continuous research and improvement processes, and to ensure the best possible quality and availability of our products, LEDiL reserves the right to change material grades without notice.

PRODUCT DATA USER AGREEMENT AND DISCLAIMER:

The measured data in the provided downloadable LEDiL Product Datasheets and Mechanical 2D-Drawings is rounded and provided as reference for planning. LEDiL Oy's optical specifications have been verified by conducting performance testing of the products in accordance with the company's quality system. The reported data are averaged results of multiple measurements with typical variation. LEDiL Oy reserves the right to without prior notification make changes and improvements to its products.

LEDiL Oy assumes neither warranty, nor guarantee nor any other liability of any kind for the contents and correctness of the provided data. The provided data has been generated with highest diligence but the provided data may in reality not represent the complete possible variation range of all intrinsic parameters. Therefore, in certain cases a deviation from the provided data could occur.

LEDiL Oy reserves the right to undertake technical changes of its products without further notification which could lead to changes in the provided data. LEDiL Oy assumes no liability of any kind for the possible deviation from any provided data or any other damage resulting from the usage of the provided data.

The user agrees to this disclaimer and user agreement with the download or usage of the provided files.

LEDiL Oy

Joensuunkatu 13
FI-24240 SALO
Finland

LEDiL Inc.

228 West Page Street
Suite D
Sycamore IL 60178
USA

Ledil Optics Technology (Shenzhen) Co., Ltd.

405 , Block B
Casic Motor Building
Shenzhen 518057
P.R.CHINA

Local sales and technical support

[www.ledil.com/
where_to_buy](http://www.ledil.com/where_to_buy)

Shipping locations

Salo, Finland
Hong Kong, China

Distribution Partners

[www.ledil.com/
where_to_buy](http://www.ledil.com/where_to_buy)