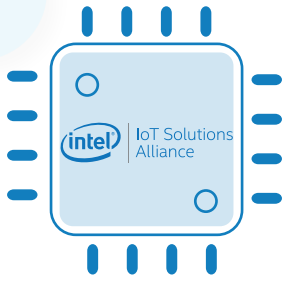




THE NEXT-GEN INTEL® x86 OPEN HARDWARE SBC

www.udoo.org

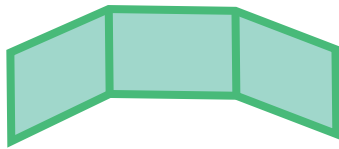
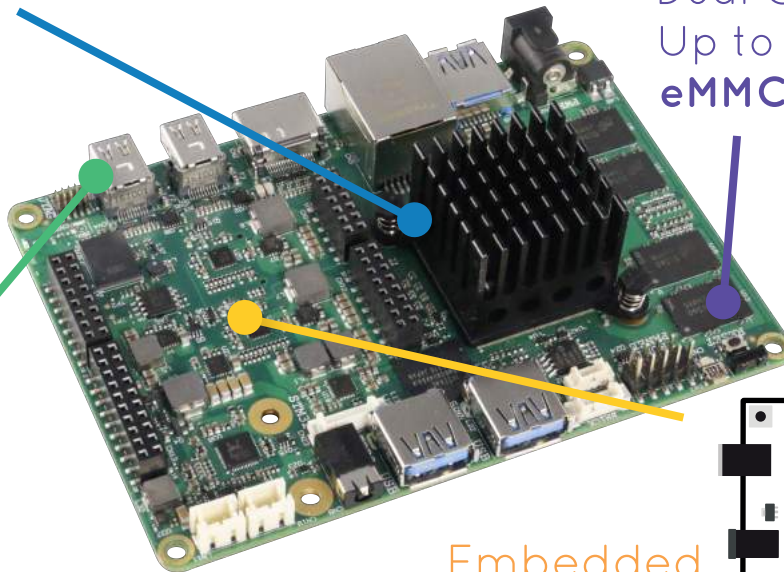
X86



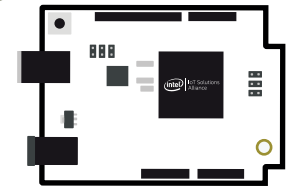
Quad core 64 BIT
CPU Up to **2.56 GHz**
GPU Up to **700 MHz**



Up to **8 GB**
Dual Channel **RAM**
Up to **32 GB**
eMMC Drive



Up to **3 simultaneous screens**
1x HDMI, 2x MiniDP++



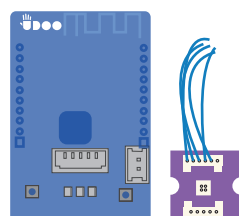
Embedded
Arduino 101-compatible
Bluetooth LE, 6-axis
accelerometer/gyroscope

Bluetooth 4.0 and Wi-Fi**



IoT Ready:

Main cloud services,
UDOO BRICKS &
UDOO BLU



Operating Systems:

Windows 10 8,1
+ All Linux Flavors
for x86, Android






Low Consumption and Fanless



** Optional



FEATURES	UDOO X86	
	ADVANCED PLUS	ULTRA
PROCESSOR	2.24 GHZ INTEL® CELERON® N3160	2.56 GHZ INTEL® PENTIUM® N3710
CORES	4	
MEMORY	4 GB DDR3L DUAL CHANNEL 1600 MHZ	8 GB DDR3L DUAL CHANNEL 1600 MHZ
MASS STORAGE	SATA 3 connector - M.2 Key B 2260 SSD Slot - Micro SD card slot	
USB	eMMC 32 GB	
NETWORKING	3x USB 3.0 type-A sockets	
VIDEO INTERFACE	Gigabit Ethernet LAN interface M.2 Key E 2230 slot for optional Wifi/BT modules	
GRAPHICS	1 x HDMI (CEC) 2 x mini DP++	
MULTIMEDIA	Intel HD Graphics 400 Up to 640 MHz 12 execution units	Intel HD Graphics 405 Up to 700 MHz 16 execution units
AUDIO	HW Video decode: H.265/HEVC, H.264, MPEG2, MVC, VC-1, WMV9, JPEG, VP8, VP9 HW Video encode: H.264, MVC, JPEG	
IR	HD audio codec ALC 283CG Microphone+Headphone combo connector Pre-amplified speaker output - S/PDIF output	
OTHER INTERFACES	RC5 IR interface	
OPERATING SYSTEM	Up to 20 GPIOs - 2x I2C - 2x UART - LPC - SDIO - Touch Screen signals on external pin headers	
DIMENSIONS	  	
	120 mm x 85 mm (4.72 inch x 3.35 inch)	

Main Fields of Application



Digital Signage



3D Scanning



Gaming



Development platform



Interactive Installation



Smart Home Gateway



Rovers and Drones

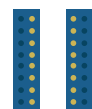


Educational

The communication between the Braswell SoC and the Curie™ SoC goes through a USB interface. Just like Arduino 101 / Genuino 101 boards connect to external PCs.

UDOO X86 is ARDUINO™ 101-COMPATIBLE

ARDUINO™ PINOUT



6-AXIS



BLE



Intel® Curie Microcontroller

Processor	Intel® Quark™ SE core 32 MHz plus 32-bit ARC core 32 MHz
Networking	Bluetooth Low Energy
Other Interfaces	SPI Flash JTAG connector SPI - I2C
Arduino Pinout	Arduino™101-compatible and compatible with most Arduino shields 3.3V compliant
Digital I/O Pinout	14 (4 PWM)
Analog I/O Pinout	6 (10 Bits of resolution)
Sensors	6-axis combo sensor with accelerometer and gyroscope UDOO Bricks connector

19.09.18