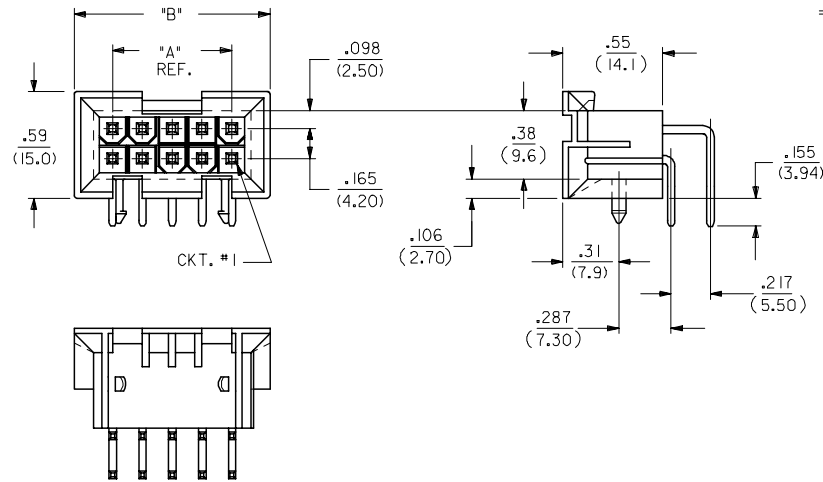
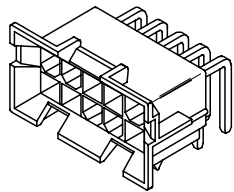


CIRCUIT SIZE	DIM. 'A'	DIM. 'B'
6	.331 (8.40)	.76 (19.2)
8	.496 (12.60)	.92 (23.4)
10	.661 (16.80)	1.09 (27.6)
12	.827 (21.00)	1.25 (31.8)
14	.992 (25.20)	1.42 (36.0)
16	1.157 (29.40)	1.58 (40.2)
18	1.323 (33.60)	1.75 (44.4)
20	1.488 (37.80)	1.91 (48.6)
22	1.654 (42.00)	2.08 (52.8)
24	1.819 (46.20)	2.24 (57.0)

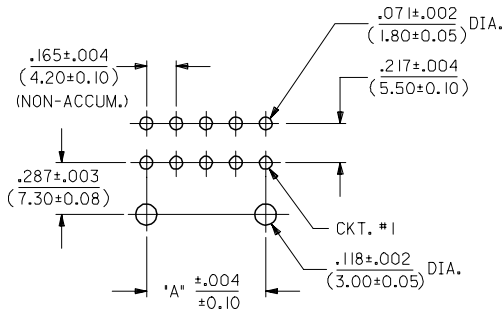


NOTES:

- HOUSING MATERIAL: "1" = NYLON 6/6, U.L. 94V-2
COLOR: NATURAL.
"2" = NYLON 6/6, U.L. 94V-0
COLOR: NATURAL.
- TERMINAL MATERIAL: BRASS, ALLOY 260.
- 4-24 CKT. PARTS MATE WITH MINI-FIT JR. RECEPTACLES #5557, #42385 AND #42474. 2 CKT. PART MATES WITH #42385 AND #42474 ONLY.
- PART ALLOWS FOR UP TO .100/(2.54) MISALIGNMENT WITH MATING RECEPTACLE IN ANY DIRECTION. SEE MATING CONNECTOR DRAWINGS FOR SPECIFIC ALLOWANCES.
- PART IS DESIGNED IN METRIC.
- TERMINAL PLATING:
 - .000100/(.00254) MIN. BRIGHT TIN OVER .000050/(.00127) MIN. NICKEL.
 - .000030/(.00076) MIN. GOLD OVER .000050/(.00127) MIN. NICKEL.
 - .000100/(.00254) MIN. MATTE TIN OVER .000050/(.00127) MIN. NICKEL.
 - .000050/(.00127) MIN. GOLD OVER .000050/(.00127) MIN. NICKEL.
- THE PRIMARY SHIPPING CARTON WILL BE LABELED "COMPLIANT TO RoHS DIRECTIVE 2002/95/EC AND ELV ANNEX II OF DIRECTIVE 2000/53/EC". CARTONS WITHOUT THIS LABEL MAY CONTAIN PRODUCT WITH TIN-LEAD PLATING.
- PRODUCT SPECIFICATION AND PROCESSING PARAMETERS SEE: PS-5556-002
- CONNECTOR ASSEMBLIES ARE NOT TO BE MATED OR UNMATED WHILE CIRCUITS ARE LIVE.



A-43644-****



RECOMMENDED HOLE LAYOUT FOR
.093/(2.36) MAX. THICK P.C. BOARD
(SEE NOTE 5.)

LEGEND:

A-43644-****

BASE NUMBER: _____

CKT. SIZE: (02-24) _____

HOUSING MAT'L: (SEE NOTE 1) _____

TERMINAL PLATING: (SEE NOTE 6) _____

---	**22, _**24	42474-***21, 5556-PBGS*P	94V-0	PHOS. BRZ.	GOLD
---	**12, _**14	42474-***11, 5556-PBGS*P	94V-2		TIN
---	**21, _**23	42474-***21, 5556-PBS*P	94V-0	BRASS	GOLD
---	**11, -**13	42474-***11, 5556-PBS*P	94V-2		TIN
---	**22, _**24	42474-***21, 5556-GS*P	94V-0	PHOS. BRZ.	GOLD
---	**12, _**14	42474-***11, 5556-GS*P	94V-2		TIN
---	**21, _**23	42474-***21, 5556-S*P	94V-0	BRASS	GOLD
---	**11, -**13	42474-***11, 5556-S*P	94V-2		TIN
---	**22, _**24	A-42385-**D2	94V-0	PHOS. BRZ.	GOLD
---	**12, _**14	A-42385-**C2	94V-2		TIN
---	**21, _**23	A-42385-**D1	94V-0	BRASS	GOLD
---	**11, -**13	A-42385-**C1	94V-2		TIN
---	**22, _**24	A-42385-**B2	94V-0	PHOS. BRZ.	GOLD
---	**12, _**14	A-42385-**A2	94V-2		TIN
---	**21, _**23	A-42385-**B1	94V-0	BRASS	GOLD
---	**11, -**13	A-42385-**A1	94V-2		TIN
R.A. HEADER	A-43644	MATING CONNECTOR	HSG. MAT'L.	TERM. MAT'L.	PLATING
		MATING CONNECTOR FEATURES			

UPDATE ME10 TITLE EC NO: UCP2005-2348 DRW:ADRA1NOL 2005/05/02 CHKD:POLGAR 2005/05/02 APPR:YMARGULLI 2005/05/03	QUALITY SYMBOLS 	GENERAL TOLERANCES (UNLESS SPECIFIED)		DIMENSION STYLE IN/MM		SCALE 2:1	DESIGN UNITS METRIC	THIRD ANGLE PROJECTION
		4 PLACES ± --- ± --- 3 PLACES ± --- ± --- 2 PLACES ± 0.25 ± .015 1 PLACE ± 0.38 ± --- ANGULAR ±1/2°	mm INCH KSM SF SF	DRAWN BY DATE 1995/12/15	CHECKED BY DATE 1995/12/15	APPROVED BY DATE 1995/12/15	TITLE MINI-FIT JR. RIGHT ANGLE HEADER ASSY EXTEND TAIL (BLIND-MATE)	MATERIAL NO. SDA-43644-0001
DRAFT WHERE APPLICABLE MUST REMAIN WITHIN DIMENSIONS		SEE SHEET 3		THIS DRAWING CONTAINS INFORMATION THAT IS PROPRIETARY TO MOLEX INCORPORATED AND SHOULD NOT BE USED WITHOUT WRITTEN PERMISSION				

