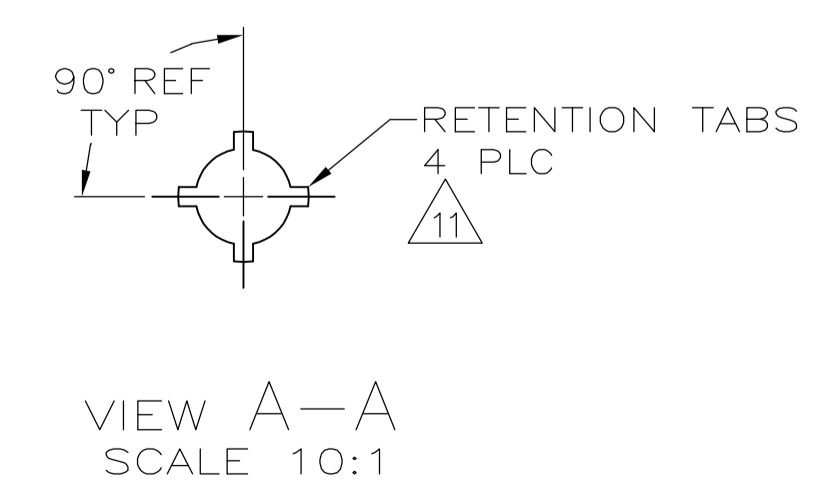
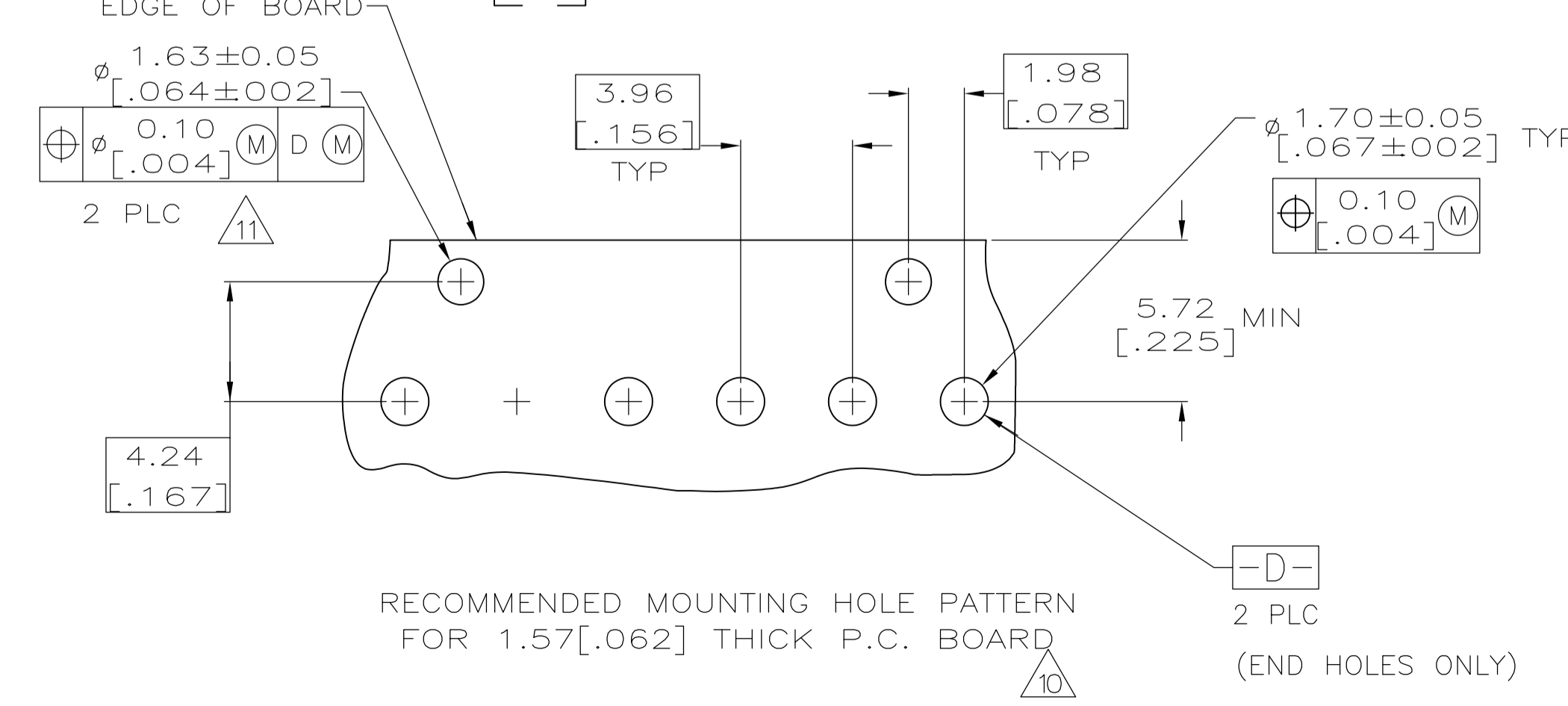
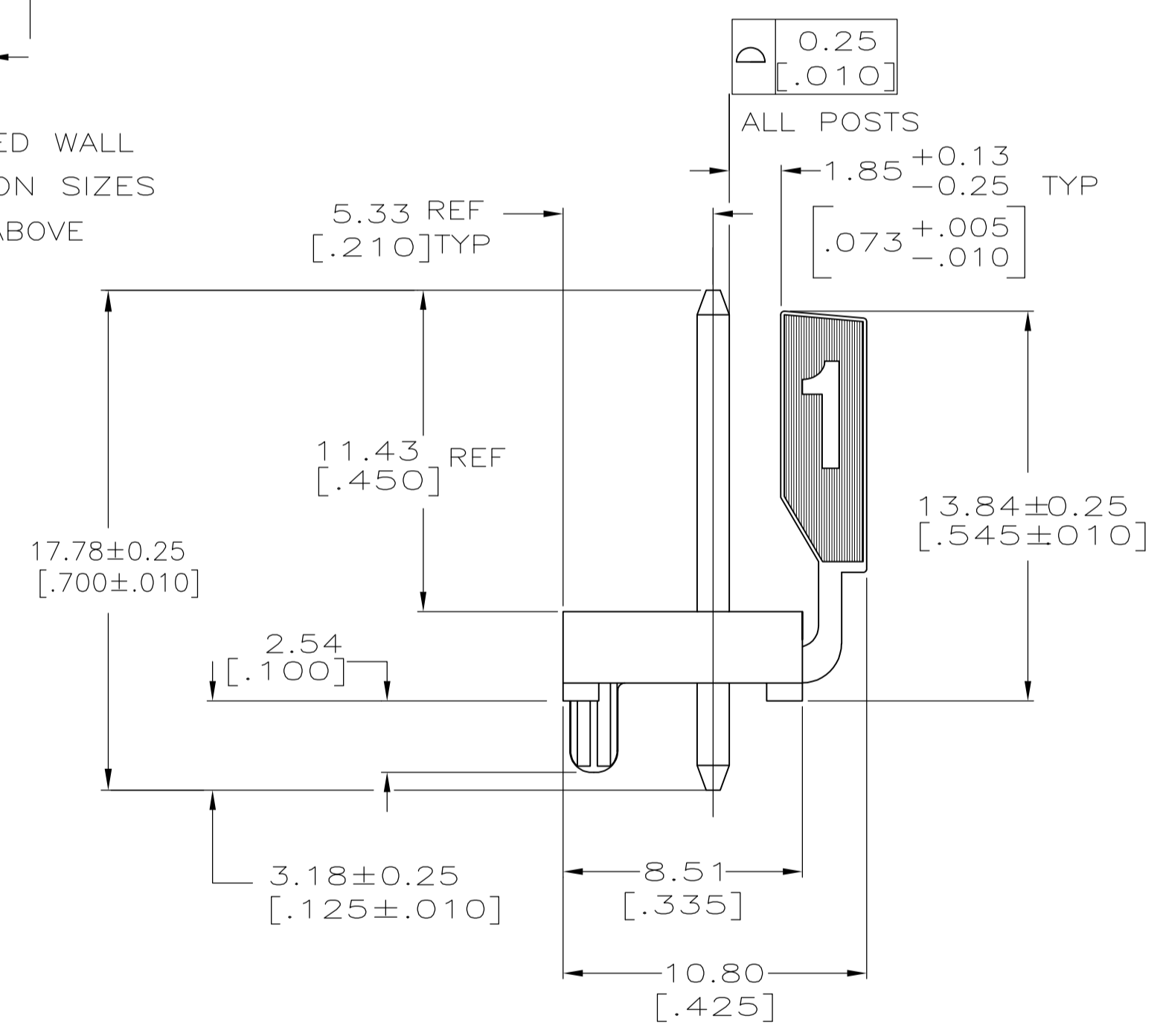
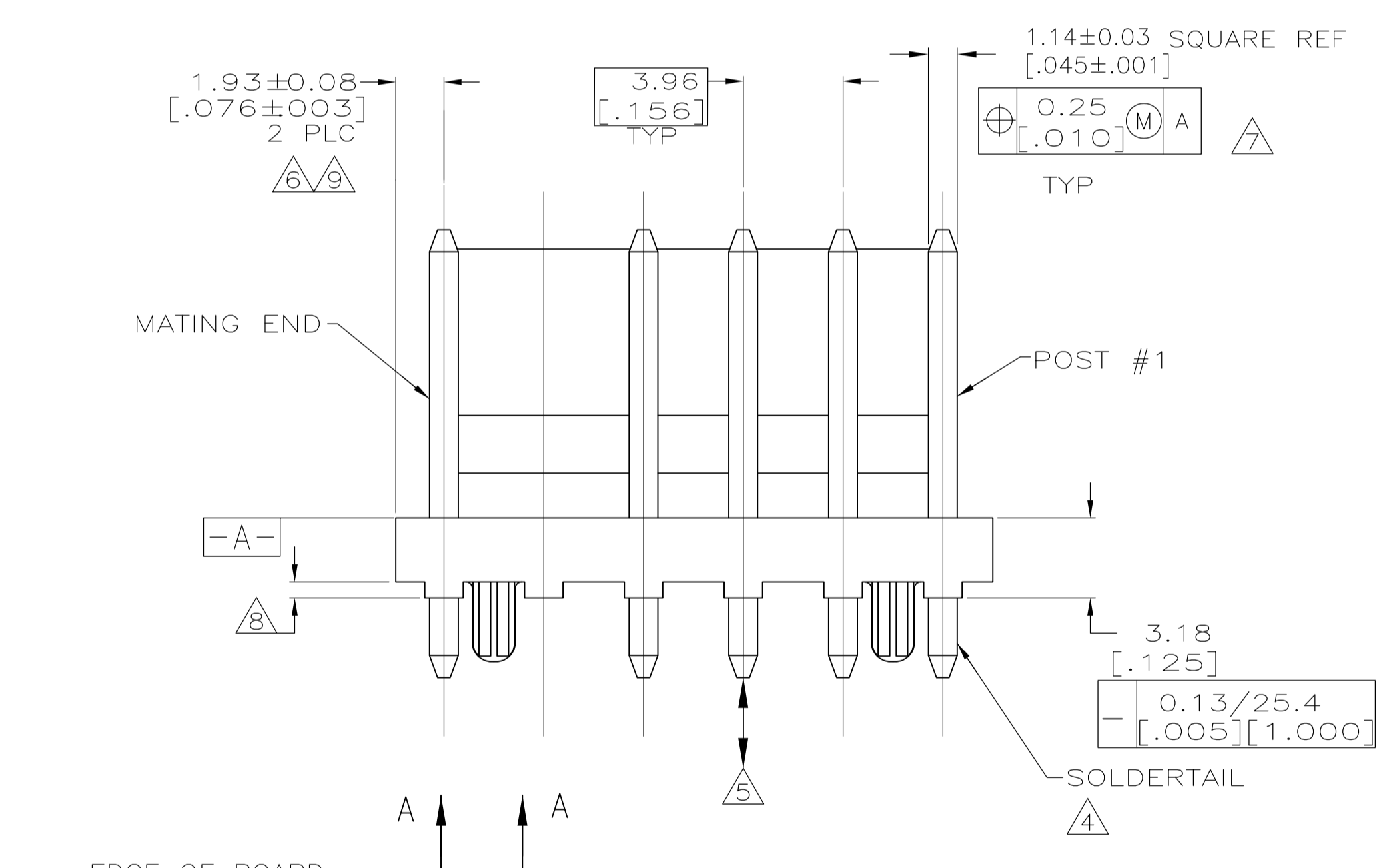
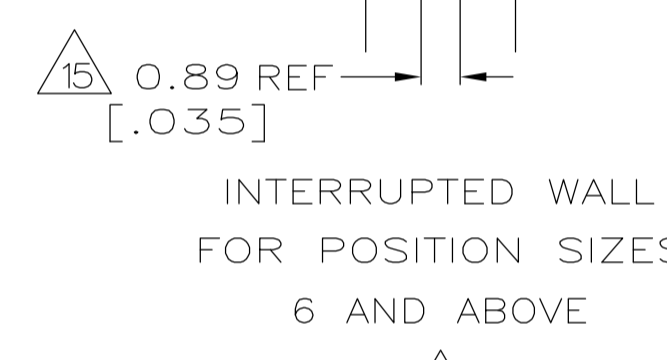
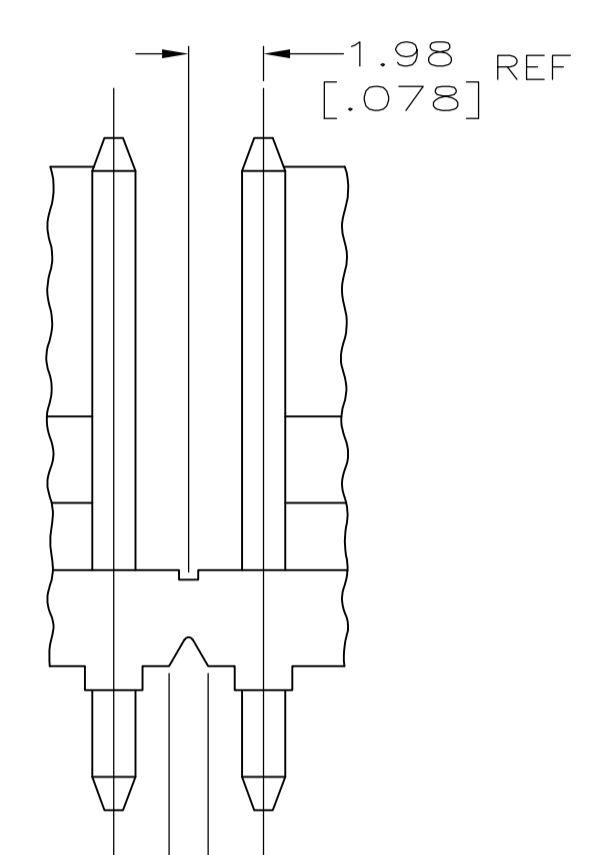
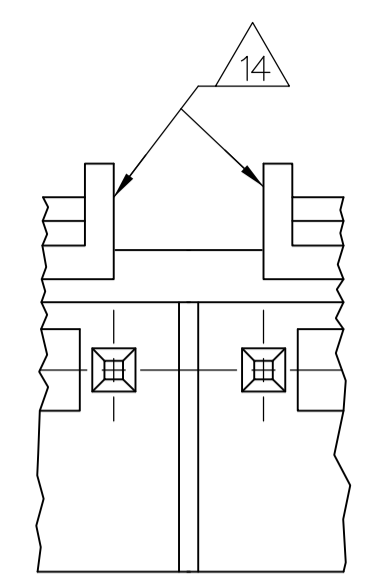
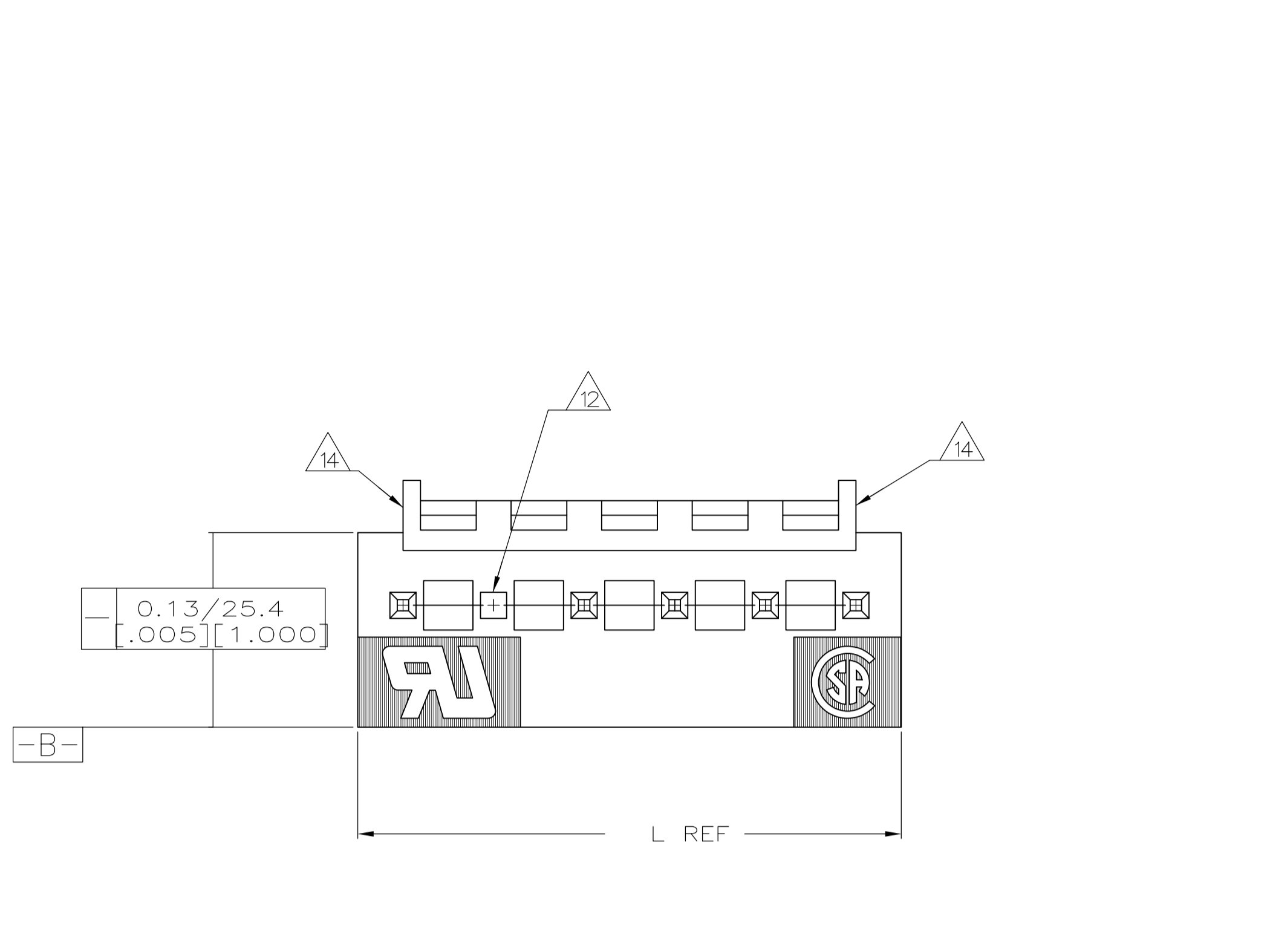


LOC		DIST		REVISIONS			
P	LTR	DESCRIPTION	DATE	DN	APVD		
E1	REVISED PER	ECR-15-006687	21OCT2015	NK	NL		



- 1 MATERIAL
HOUSING: THERMOPLASTIC POLYESTER, GLASS FILLED, UL94V-0.
POST: COPPER ALLOY
- 2 FINISH
HOUSING: NATURAL
POST, BRIGHT TIN-LEAD (93/7) PLATE, 0.00380 [0.000150] - 0.00880 [0.000350] OVER NICKEL UNDERPLATE, 0.0013 [0.00005] MIN THICK FOR -5 & 6.
POST, MATTE TIN PLATE, 0.00380 [0.000150] - 0.00880 [0.000350] OVER NICKEL UNDERPLATE, 0.0013 [0.00005] MIN THICK FOR -35 & -36.
- 3 ALL POSITION SIZES HAVE THE BACKWALL NOTCHED ON BOTH ENDS AS SHOWN.
POSITION SIZES 6 AND ABOVE HAVE AN INTERRUPTED BACKWALL AT VARIOUS LOCATIONS. (SEE TABLE FOR INTERRUPTION(S) LOCATIONS).
- 4 POST SOLDER TAILS COMPLY WITH AMP SOLDERABILITY SPEC 109-11-2.
- 5 POST WITHSTANDS 13.34N (3 LB) MIN AXIAL FORCE IN EITHER DIRECTION WITHOUT DISLODGING.
- 6 APPLIES AT -A-.
- 7 APPLIES WHEN THE HEADER IS STRAIGHT.
- 8 PLASTIC PROJECTIONS PERMITTED IN THIS ZONE.
- 9 COORDINATE DIMENSIONS APPLIES FROM THE CENTER OF THE ACTUAL FEATURE.
- 10 SOLDER SIDE OF BOARD IS SHOWN.
- 11 THE RETENTION TABS PROVIDE A ONE-TIME INTERFERENCE FIT IN THE 1.63 [0.064] DIAMETER BOARD HOLE FOR HEADER ASSEMBLY RETENTION DURING SOLDERING. FOUR TABS PER PEG, TWO PEGS PER HEADER ASSEMBLY.
- 12 POST NO. 5 OMITTED.
- 13 DIMENSIONS IN BRACKETS ARE IN INCHES
- 14 EDGE OF POLARIZING LOCK WALL TO BE IN LINE WITH CENTERLINE OF ADJACENT POST WITHIN ±0.13 [0.005].
- 15 NOTCH SHOWN MAY OR MAY NOT APPEAR.
- 16 OBSOLETE PART NUMBER

CALLOUT	POSITIONS	BACKWALL INTERRUPTION(S) BETWEEN POST	L	NO OF POSITIONS	PART NO
16	3 & 4		23.65 [0.931]	6	3-647068-6
	-		19.69 [0.775]	5	3-647068-5
16	3 & 4		23.65 [0.931]	6	647068-6
16	-		19.69 [0.775]	5	647068-5

NOTES		BACKWALL INTERRUPTION(S) BETWEEN POST	L	NO OF POSITIONS	PART NO
THIS DRAWING IS A CONTROLLED DOCUMENT.					
DIMENSIONS: mm [INCHES]		TOLERANCES UNLESS OTHERWISE SPECIFIED:			
0 PLC ± -		1 PLC ± -			
1 PLC ± -		2 PLC ± 0.13 [0.005]			
2 PLC ± -		3 PLC ± -			
3 PLC ± -		4 PLC ± -			
4 PLC ± -		ANGLES ± -			
MATERIAL		FINISH	WEIGHT	SIZE	CAGE CODE DRAWING NO
1		2		A1	00779
CUSTOMER DRAWING		SCALE	5:1	SHEET	1 OF 1
		REV		E1	