

1 | 2 | 3 | 4

A

B

C

D

E

F

A

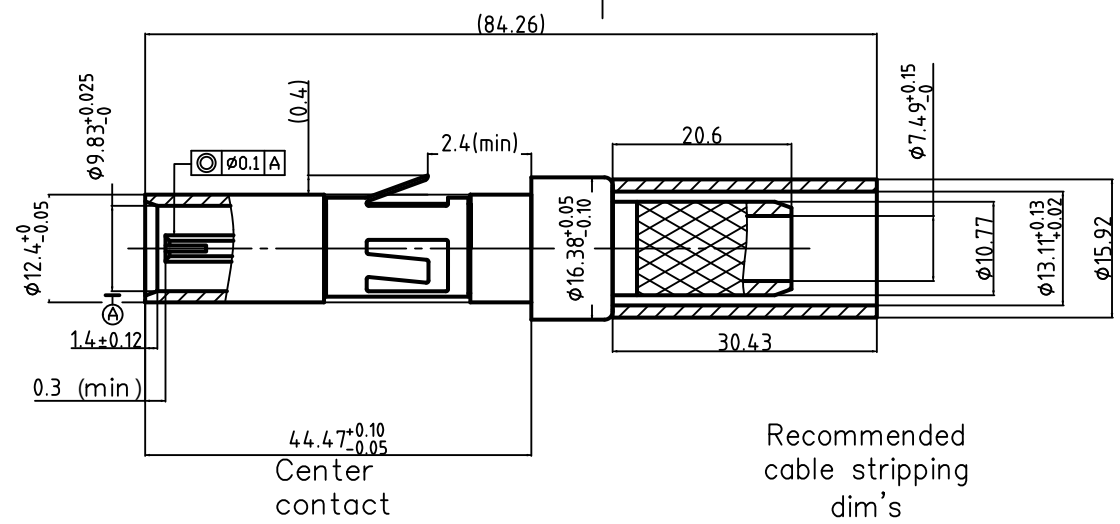
B

C

D

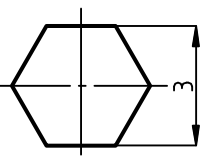
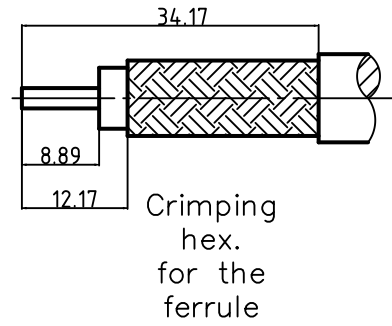
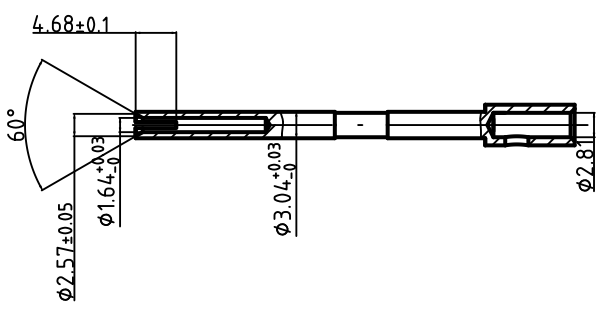
E

F



Center contact

Recommended cable stripping dim's



BUILD INSTRUCTIONS:
SLIDE AMPHENOL SINE SYSTEMS ALIGNMENT COLLAR 20-80646 ON COAX CABLE (PURCHASED SEPARATELY).



PREP CABLE AS SHOWN ABOVE. SOLDER CENTER CONTACT ONTO THE CENTER CONDUCTOR.



SLIDE THE CRIMP FERRULE OVER THE COAX CABLE AND PUSH THE CENTER PIN INTO COAX CONTACT.



CRIMP FERRULE USING DANIELS CRIMPER HX4 AND DIE SET Y193.



Electrical Characteristics:

- Characteristic impedance: 50Ω
- Working voltage: 500V(rms)
- Frequency range: 0-10GHz
- Dielectric withstanding voltage: 750V(volts RMS)
- Contact resistance: Center contact: ≤10mΩ, Outer contact: ≤3mΩ
- Insulation resistance: ≥1000MΩ
- VSWR: <1.30(0-3GHz)

Note:

- 1.Match cable: RG-316/U
- 2.Center contact :Solder
- 3.Outer contact: Crimp

4	Ferrule	Copper alloy	Nickel	1	
3	Body	Brass	Gold	1	
2	Insulator	PTFE	---	1	
1	Center contact	Beryllium copper	Gold	1	
NO.	Title/Name	Material	Finish	QTY	Remark

Customer Code. AFN	Customer part NO.
Unless otherwise specified tolerance X.XX±0.1 X.X±0.2	Designed J-0030 Date 2011.01.28 Checked J-0006 Date 2011.01.28
Notice: This document is the property of Amphenol ,reproduction or disclosure is forbidden unless authorized by Amphenol.	

AMPHENOL	
Part No MIM-K2.5Y	
Drawing No MIM.1212006/R/1	Rev. V6.0
Scale 5:1	Sheet 1/1

1 | 2 | 3 | 4