

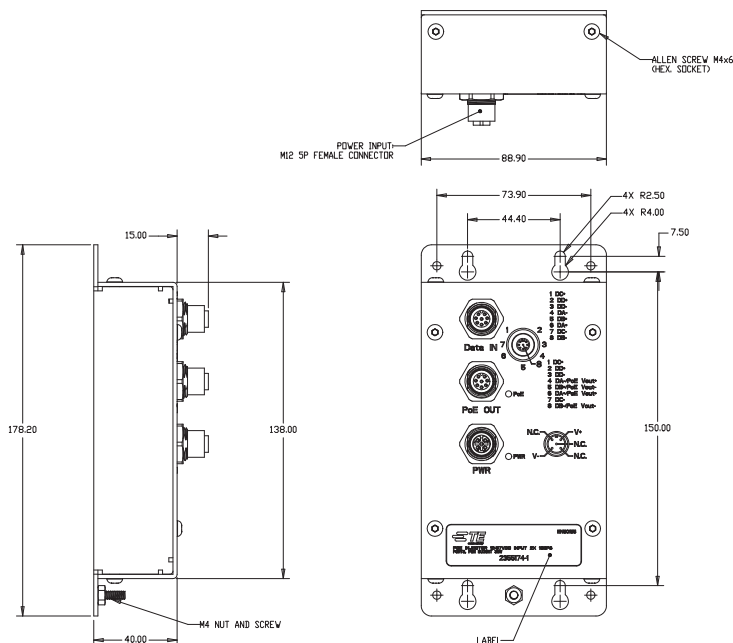


1-PORT EN50155 POE INJECTOR

1-PORT GIGABIT POWER OVER ETHERNET INJECTOR

TE's EN50155 compliant PoE Injectors are designed for industrial applications, such as rolling stock, vehicle, and railway applications. The PoE Injector is an advanced IEEE802.3at compliant device with Intelligent Detection that provides 1-port 10/100/1000 Base-T(X) PoE output which is compliant with EN50155. It is specifically designed for the toughest industrial environments. The EN50155 PoE Injector uses M12 connectors to ensure tight, robust connections, and guarantee reliable operation during environmental disturbances, such as vibration and shock. The device does not turn on power until it detects a valid PoE signature from the PoE devices attached downstream in the network. This provides protection against damage to non-PoE compliant devices which may be connected to the Ethernet cable.

Dimensions



GIGABIT EN50155 POE INJECTOR

Characteristics

Part Number	
	2355174-1
Physical ports	
10/100/1000 Base-T(X) with P.S.E. Ports in M12 Auto MDI/MDIX	1 x M12 connector (8-pin female M12 A-coding)
10/100/1000 Base-T(X) Port in M12 Auto MDI/MDIX	1 x M12 connector (8-pin female M12 A-coding)
Operating voltage	
Input Voltage	24VDC (12-57VDC) on 5-pin female M12 A-Coding
Output Voltage	50V / 600mA, 30 Watts max.
LED Indicator	
Power Indicator	PWR/Ready: 1x LED
	Blue On: PoE Device Link
	Blue Blinking: Detecting PoE Device
	Blue Off: No PoE Device Detected
Protection	
Short circuit Protection	Present
Overload Protection	Present
Physical Characteristics	
Enclosure	IP-40
Dimensions (WxDxH)	88.9 x 40 x 178.2mm (3.5 x 1.57 x 7")
Weight (g)	446 gram
Environmental	
Storage Temperature	-40 to 80 °C (-40 to 176 °F)
Operating Temperature	-40 to 75 °C (-40 to 167 °F)
Operating Humidity	5% to 90% non condensing
Regulatory approvals	
EMI	FCC Part 15, CISPR (EN55022) class A, EN50155 (EN50121-3-2, EN55011, EN50121-4)
EMS	EN61000-4-2 (ESD), EN61000-4-3 (RS), EN61000-4-4 (EFT), EN61000-4-5 (Surge), EN61000-4-6 (CS), EN61000-4-8, EN61000-4-11
Shock, freefall, vibration	IEC 60068-2-27, IEC 60068-2-31, IEC 60068-2-6
Safety	IEC/ EN 60950-1

GIGABIT EN50155 POE INJECTOR

Pin Assignments

1000 Base-T				
Pin	M12 Input (data only)		M12 Output (Data and Power)	
	Symbol	Description	Symbol	Description
1	BI_DC+	Data	BI_DC+	Data
2	BI_DD+	Data	BI_DD+	Data
3	BI_DD-	Data	BI_DD-	Data
4	BI_DA-	Data	BI_DA- (Vdc+)	Data + Power(+)
5	BI_DB+	Data	-I_DB+ (Vdc-)	Data + Power(-)
6	BI_DA+	Data	BI_DA+ (Vdc+)	Data + Power(+)
7	BI_DC-	Data	BI_DC-	Data
8	BI_DB-	Data	BI_DB- (Vdc-)	Data + Power(-)

10/100 Base-T(X)				
Pin	RJ-45 Input (Data and Power)		RJ-45 Output (Data Only)	
	Symbol	Description	Symbol	Description
1	NC	Not Connected	NC	Not Connected
2	NC	Not Connected	NC	Not Connected
3	NC	Not Connected	NC	Not Connected
4	Rx-	Data	Rx- (Vdc+)	Data + Power(+)
5	Tx+	Data	Tx+ (Vdc-)	Data + Power(-)
6	Rx+	Data	R+ (Vdc+)	Data + Power(+)
7	NC	Not Connected	NC	Not Connected
8	Tx-	Data	Tx- (Vdc-)	Data + Power(-)

Pins 5 and 8 (-Vdc) should not be shorted to ground

- 1 BI_DC+
- 2 BI_DD+
- 3 BI_DD-
- 4 BI_DA - / PoE Vout+
- 5 BI_DB+ / PoE Vout-
- 6 BI_DA+ / PoE Vout+
- 7 BI_DC-
- 8 BI_DB- / PoE Vout-

