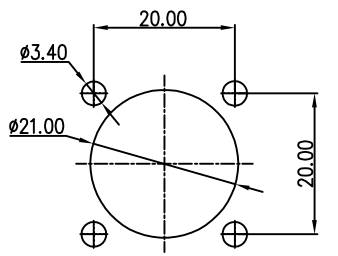
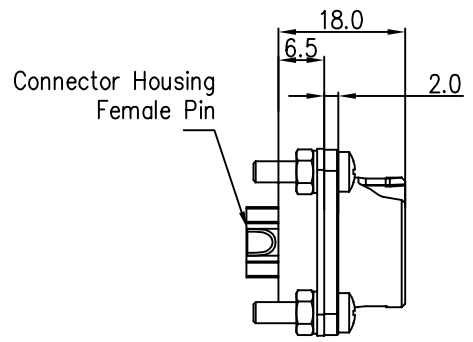


THIS INFORMATION IS CONFIDENTIAL AND IS DISCLOSED TO YOU ON CONDITION THAT NO FURTHER DISCLOSURE IS MADE BY YOU TO OTHER THAN CHOGORI PERSONNEL WITHOUT AUTHORIZATION FROM CHOGORI CORP.

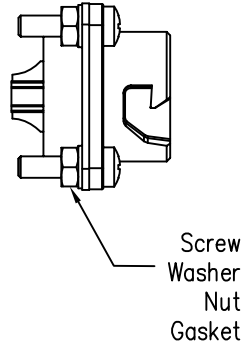
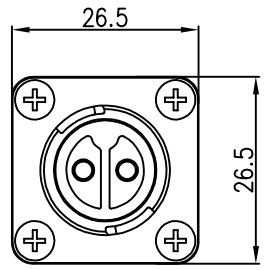
REV.	ECN NO.	DESCRIPTION	SIGN	DATE
C1	N/A	INITIAL DRAWING	Liu	2020/05/16



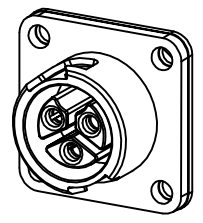
Recommended Panel Cut-Out  
Panel Thickness Max 4mm



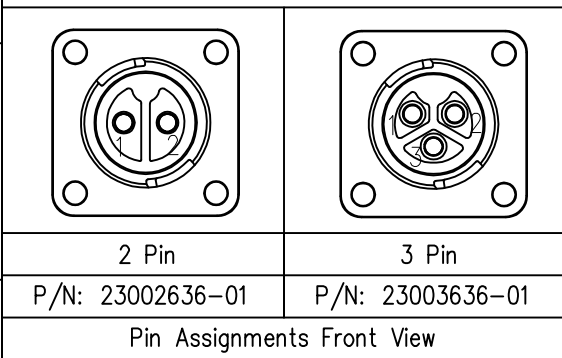
Connector Housing  
Female Pin



Screw  
Washer  
Nut  
Gasket



23XXX636-01  
Pin Number



- Specification:
- 1.Operation Temperature: -45℃~105℃.
  - 2.Insulation Resistance:100MΩ at DC500V.
  - 3.Contact Resistance:<10mΩ.
  - 4.Withstand Voltage:2000V AC, 1min
  - 5.Operating Current: 20A
  - 6.Operating Voltage:AC 300V
  - 7.Waterproof Rate:IP67 (Mated)
  - 8.Housing: Nylon, Black
  - 9.Female Pin:Copper Alloy, Gold Plated
  - 10.Gasket:Silicon Black
  - 11.Screw: Stainless Steel
  - 12.Washer: Stainless Steel
  - 13.Nut: Stainless Steel
  - 14.RoHS Compliant.

UNIT:mm		DESCRIPTION Middle Series Push Lock Square Flange Mount With Female Pin	<b>CHOGORI</b>	PART NO 23XXX636-01	DRAWN BY Liu	DATE 2020/05/16
TOLERANCE .X ±0.25 .XX ±0.15 .XXX ±0.05 ANGLES ±1°	SCALE 1:1	SHEET 1 OF 1		DWG NO	CHECKED BY Mo	DATE 2020/05/16
REV. C1	SIZE A4	* :Inspection Item		CUSTOMER	APPROVED BY Adley	DATE 2020/05/16