

- NOTES:
- MATERIALS:  
HOUSING - LIQUID CRYSTAL POLYMER (LCP),  
GLASS-FILLED, UL 94V-0, COLOR: BLACK  
SIGNAL PIN - COPPER ALLOY
  - FINISHES:  
CONTACT AREA: SELECTIVE GOLD (Au)  
PCB TAILS: SELECTIVE MATTE TIN (Sn)  
NICKEL (Ni) OVERALL.
  - THIS PART CONFORMS TO MOLEX PRODUCT SPECIFICATION PS-74031-999
  - FOR MIXED CONTACT LENGTHS CONSULT MOLEX FOR AVAILABILITY
  - FOR SPECIFIC MATERIAL NUMBERS & MATING INFORMATION REFER TO SHEET 2
  - PACKAGE PER PK-74061-003
  - MARK PART WITH PART NUMBER & DATE CODE APPROXIMATELY WHERE SHOWN
  - MAPS (MOLEX ADVANCED PLATING SYSTEM)

THE PRIMARY CARTON WITH A LABEL STATING "ELV AND RoHS COMPLAINT" IS LEAD FREE. CARTONS WITHOUT THIS LABEL MAY CONTAIN LEAD.

REV	DESCRIPTION	DATE	APPR	DRWNGS
G	LEAD FREE CONVERSION	2012/08/24		
	EC NO: UCP2013-0687	2012/08/24		
	CHKD:MOLFE	2012/11/21		
	APPR:SMILLER	2012/12/14		

GENERAL TOLERANCES (UNLESS SPECIFIED)	
mm	INCH
4 PLACES ± .005	± .0004
3 PLACES ± .003	± .0002
2 PLACES ± .002	± .0001
1 PLACE ± .001	± .00005
0 PLACE ±	±
ANGULAR ±1/2°	
DRAFT WHERE APPLICABLE MUST REMAIN WITHIN DIMENSIONS	

DIMENSION STYLE	
MM ONLY	
DRAWN BY	DATE
JMELTON	2010/05/19
CHECKED BY	DATE
SDANNELLEY	2010/05/19
APPROVED BY	DATE
SMILLER	2010/07/14
MATERIAL NO.	
SEE SHEET 2	

SCALE	DESIGN UNITS	THIRD ANGLE PROJECTION
2.5:1	METRIC	
<b>VHDM LITE 8 ROW SIGNAL END BACKPLANE SALES ASSEMBLY</b>		
DOCUMENT NO.	SHEET NO.	
SD-75198-001	1 OF 2	
THIS DRAWING CONTAINS INFORMATION THAT IS PROPRIETARY TO MOLEX INCORPORATED AND SHOULD NOT BE USED WITHOUT WRITTEN PERMISSION		

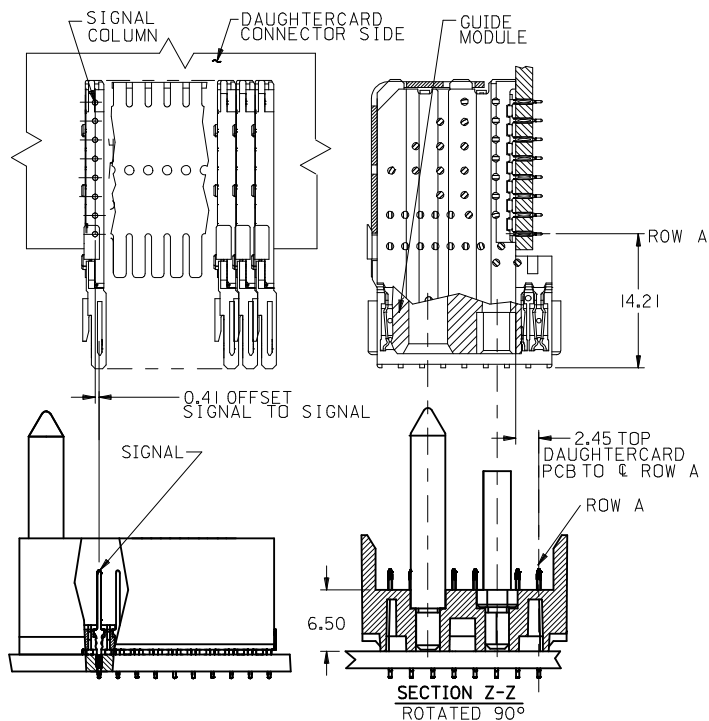
M/N 75198-( )	-**0*	-**1*	-**2*	-**3*	-**4*	-**5*	-**6*	-**7*	-**8*
KEYING PIN ORIENTATION	O	A	B	C	D	E	F	G	H

75198 - \* \* \* \*

NUMBER OF COLUMNS/PLATING  
 10 = 10 COLUMN MATTE TIN (FORMERLY TIN/LEAD)  
 25 = 25 COLUMN MATTE TIN (FORMERLY TIN/LEAD)  
 60 = 10 COLUMN MATTE TIN (MAPS)  
 75 = 25 COLUMN MATTE TIN (MAPS)  
 90 = 10 COLUMN MATTE TIN  
 85 = 25 COLUMN MATTE TIN

PIN HEIGHT  
 1 = 4.75  
 2 = 6.25  
 3 = 4.25  
 4 = 5.15

PART NUMBER	COLUMN	NUMBER OF SIGNAL PIN	NUMBER OF SHIELD	A	B	M	GOLD THICKNESS MICROMETER	TIN THICKNESS MICROMETER
75198-60*1	10	80	0	27.00	18.00	4.75	0.25 MAPS	0.76-1.52
75198-*0*1							0.76	
75198-75*1	25	200	0	57.00	48.00	4.75	0.25 MAPS	
75198-*5*1							0.76	
75198-60*2	10	80	0	27.00	18.00	6.25	0.25 MAPS	
75198-*0*2							0.76	
75198-75*2	25	200	0	57.00	48.00	6.25	0.25 MAPS	
75198-*5*2							0.76	
75198-60*3	10	80	0	27.00	18.00	4.25	0.25 MAPS	
75198-*0*3							0.76	
75198-75*3	25	200	0	57.00	48.00	4.25	0.25 MAPS	
75198-*5*3							0.76	
75198-60*4	10	80	0	27.00	18.00	5.15	0.25 MAPS	
75198-*0*4							0.76	
75198-75*4	25	200	0	57.00	48.00	5.15	0.25 MAPS	
75198-*5*4							0.76	



SEE SHEET 1 EC NO: UCP2013-0687 DRWNGES CHKD:HWOLFE APPR:SMILLER 2012/08/24 2012/11/21 2012/12/14	QUALITY SYMBOLS	GENERAL TOLERANCES (UNLESS SPECIFIED)	DIMENSION STYLE MM ONLY	SCALE 2.5:1	DESIGN UNITS METRIC	THIRD ANGLE PROJECTION
	▽=0	mm INCH	DRAWN BY DATE JMELTON 2010/05/19	TITLE	VHDM LITE 8 ROW SIGNAL END BACKPLANE SALES ASSEMBLY <b>molex</b> SD-75198-001 SHEET NO. 2 OF 2	
	▽=0	4 PLACES ± --- ± ---	CHECKED BY DATE SDANNELLEY 2010/05/19			
	▽=0	3 PLACES ± --- ± ---	APPROVED BY DATE SMILLER 2010/07/14			
	▽=0	2 PLACES ± --- ± ---	MATERIAL NO.	DOCUMENT NO.		
▽=0	1 PLACE ± --- ± ---	SEE TABLE				
		0 PLACE ± ±				
		ANGULAR ±1/2°				
		DRAFT WHERE APPLICABLE MUST REMAIN WITHIN DIMENSIONS				

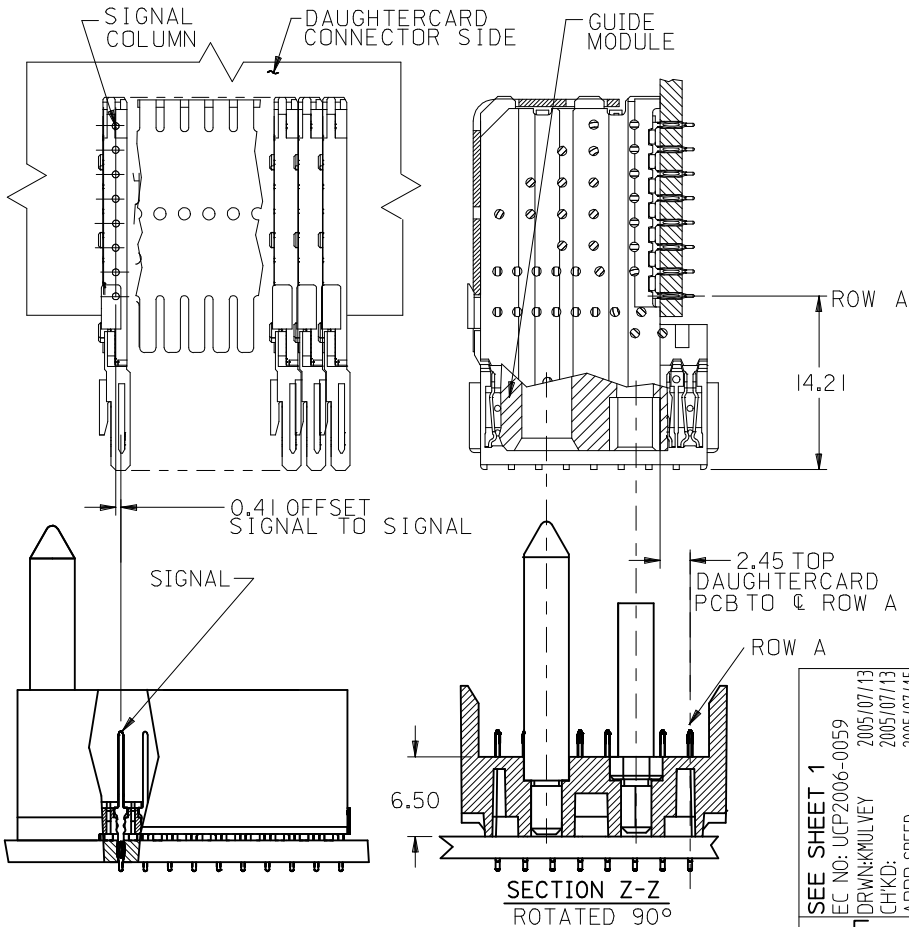
10 9 8 7 6 5 4 3 2 1

M/N 75198-( )	-**0*	-**1*	-**2*	-**3*	-**4*	-**5*	-**6*	-**7*	-**8*
KEYING PIN ORIENTATION	O	A	B	C	D	E	F	G	H

75198 - \* \* \* \*

NUMBER OF COLUMNS/PLATING  
 10 = 10 COLUMN TIN/LEAD  
 25 = 25 COLUMN TIN/LEAD  
 90 = 10 COLUMN MATTE TIN  
 85 = 25 COLUMN MATTE TIN

CONTACT LOAD  
 (PIN HEIGHT)  
 1 = 4.75  
 2 = 6.25  
 3 = 4.25  
 4 = 5.15



PART NUMBER	COLUMN	NUMBER OF SIGNAL PIN	NUMBER OF SHIELD	A	B	M	Au (um) THICKNESS	Sn (um) THICKNESS
75198-x0*1	10	80	0	27.00	18.00	4.75	0.76	0.76-1.52
75198-x5*1	25	200	0	57.00	48.00	4.75	0.76	
75198-x0*2	10	80	0	27.00	18.00	6.25	0.76	
75198-x5*2	25	200	0	57.00	48.00	6.25	0.76	
75198-x0*3	10	80	0	27.00	18.00	4.25	0.76	
75198-x5*3	25	200	0	57.00	48.00	4.25	0.76	
75198-x0*4	10	80	0	27.00	18.00	5.15	0.76	
75198-x5*4	25	200	0	57.00	48.00	5.15	0.76	

<b>SEE SHEET 1</b> EC NO: UCP2006-0059 DRAWN: KULVEY 2005/07/13 CHKD: 2005/07/13 APPR: SREED 2005/07/15 DESCRIPTION REV	<b>QUALITY SYMBOLS</b> ▽=0 ▽=0	<b>GENERAL TOLERANCES (UNLESS SPECIFIED)</b> <table border="1"> <tr> <th></th> <th>mm</th> <th>INCH</th> </tr> <tr> <td>4 PLACES</td> <td>±---</td> <td>±---</td> </tr> <tr> <td>3 PLACES</td> <td>±---</td> <td>±---</td> </tr> <tr> <td>2 PLACES</td> <td>±---</td> <td>±---</td> </tr> <tr> <td>1 PLACE</td> <td>±---</td> <td>±---</td> </tr> </table>		mm	INCH	4 PLACES	±---	±---	3 PLACES	±---	±---	2 PLACES	±---	±---	1 PLACE	±---	±---	<b>DIMENSION STYLE</b> <b>MM ONLY</b> DRAWN BY DATE MBANDURA 2002/10/09 CHECKED BY DATE NMARTIN 2002/10/09 APPROVED BY DATE CBIXLER 2002/10/09 MATERIAL NO.	<b>SCALE</b> 2.5:1 <b>DESIGN UNITS</b> METRIC <b>THIRD ANGLE PROJECTION</b>	<b>TITLE</b> VHDM LITE 8 ROW SIGNAL END BACKPLANE SALES ASSEMBLY <b>MOLEX INCORPORATED</b> DOCUMENT NO. SD-75198-001 SHEET NO. 2 OF 2
		mm	INCH																	
	4 PLACES	±---	±---																	
	3 PLACES	±---	±---																	
2 PLACES	±---	±---																		
1 PLACE	±---	±---																		
DRAFT WHERE APPLICABLE MUST REMAIN WITHIN DIMENSIONS		<b>SEE CHART</b>	THIS DRAWING CONTAINS INFORMATION THAT IS PROPRIETARY TO MOLEX INCORPORATED AND SHOULD NOT BE USED WITHOUT WRITTEN PERMISSION																	