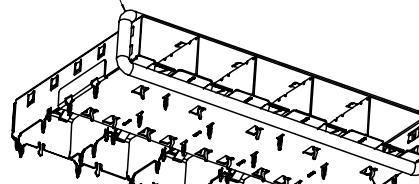
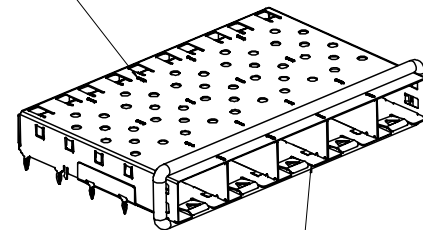


360° ELASTOMER EMI GASKET COMPLIES WITH (SFP) MSA BOARD AND BEZEL LOCATIONS

INNER WALL TABS ARE COINED OVER BASE AND COVER FOR RIGIDITY

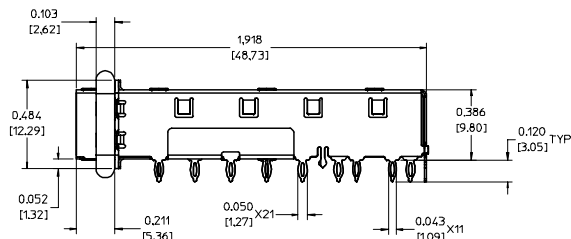


EMI FINGERS CONTACT ADAPTER



15 UNDER BELLY EMI PINS

DIMENSIONS OF EACH INNER CAGE DESIGNED TO FUNCTION WITH SMALL FORM-FACTOR PLUGGABLE (SFP) TRANSCEIVER



NOTES:

- PRESS FIT LEGS .120" LONG-
0.062 [1.57] MINIMUM PCB THICKNESS FOR SINGLE SIDED USE.
0.118 [3.00] MINIMUM PCB THICKNESS FOR BELLY TO BELLY USE.

- MATERIAL: COPPER ALLOY
PLATING: NONE

NOTE: A NICKEL PLATED VERSION OF THIS ASSEMBLY IS AVAILABLE. REFER TO DOCUMENT SD-74723-004.

3. REFERENCE DOCUMENTS:

PRODUCT SPECIFICATION: PS-74728-000
COSMETIC SPECIFICATIONS: WI-HP-7-2774 AND WI-HPA-7-0093

- MATES WITH SERIES 74729, LIGHT PIPE COVER ASSEMBLY.

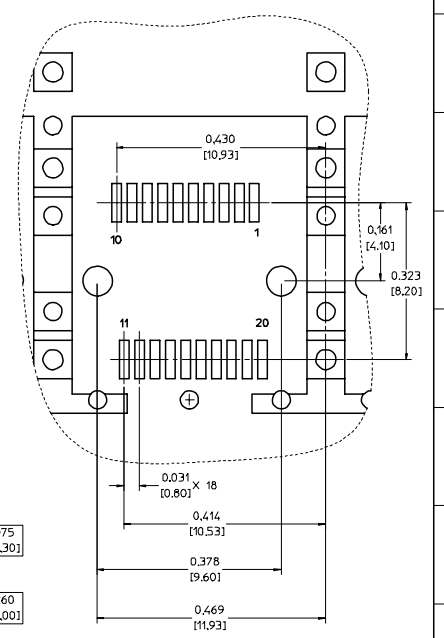
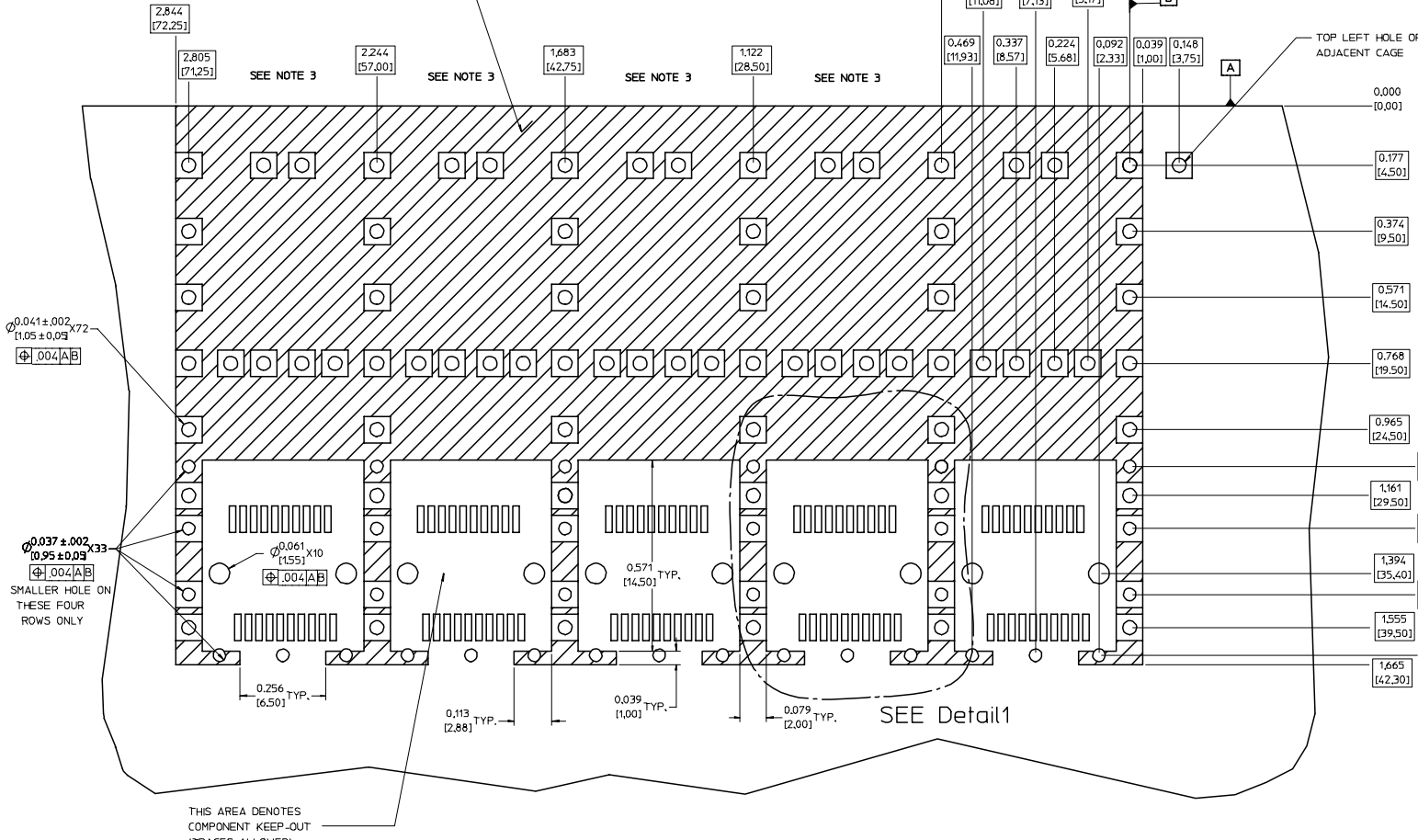
- THIS PART MEETS THE RESTRICTION OF HAZARDOUS SUBSTANCES IN ELECTRICAL AND ELECTRONIC EQUIPMENT (ROHS) DIRECTIVE (2002/95/EC).

ENTER DESCRIPTION EC NO: USY2006-026 DRWKS:IMONSO 2006/01/18 CHKD:BRUSSELL 2006/01/26 APPR:BRUSSELL 2006/01/25	QUALITY SYMBOLS	GENERAL TOLERANCES (UNLESS SPECIFIED)	DIMENSION STYLE	SCALE	DESIGN UNITS	THIRD ANGLE PROJECTION
	▽=0 ▽=0	mm ± --- ± --- INCH ± --- ± ---	IN/MM	3:1	METRIC	
		4 PLACES ± --- ± --- 3 PLACES ± --- ± .005 2 PLACES ± 0.13 ± .010 1 PLACE ± 0.25 ± --- ANGULAR ± 1 °	DRAWN BY: KS IMONSO CHECKED BY: BRUSSELL APPROVED BY: BRUSSELL	DATE: 2004/01/26 DATE: 2004/01/26 DATE: 2004/01/26		TITLE: 1X5 SFP GANGED CAGE ASSEMBLY, PRESS FIT MOLEX INCORPORATED
		DRAFT WHERE APPLICABLE MUST REMAIN WITHIN DIMENSIONS	MATERIAL NO: 739270501 SIZE: D	DOCUMENT NO: SD-73927-501		SHEET NO: 1 OF 5

PCB LAYOUT FOR BELLY TO BELLY MOUNTING

HOST CONNECTOR DETAIL

CROSS-HATCHED AREA DENOTES COMPONENT AND TRACE KEEP-OUT (EXCEPT CHASSIS GROUND)



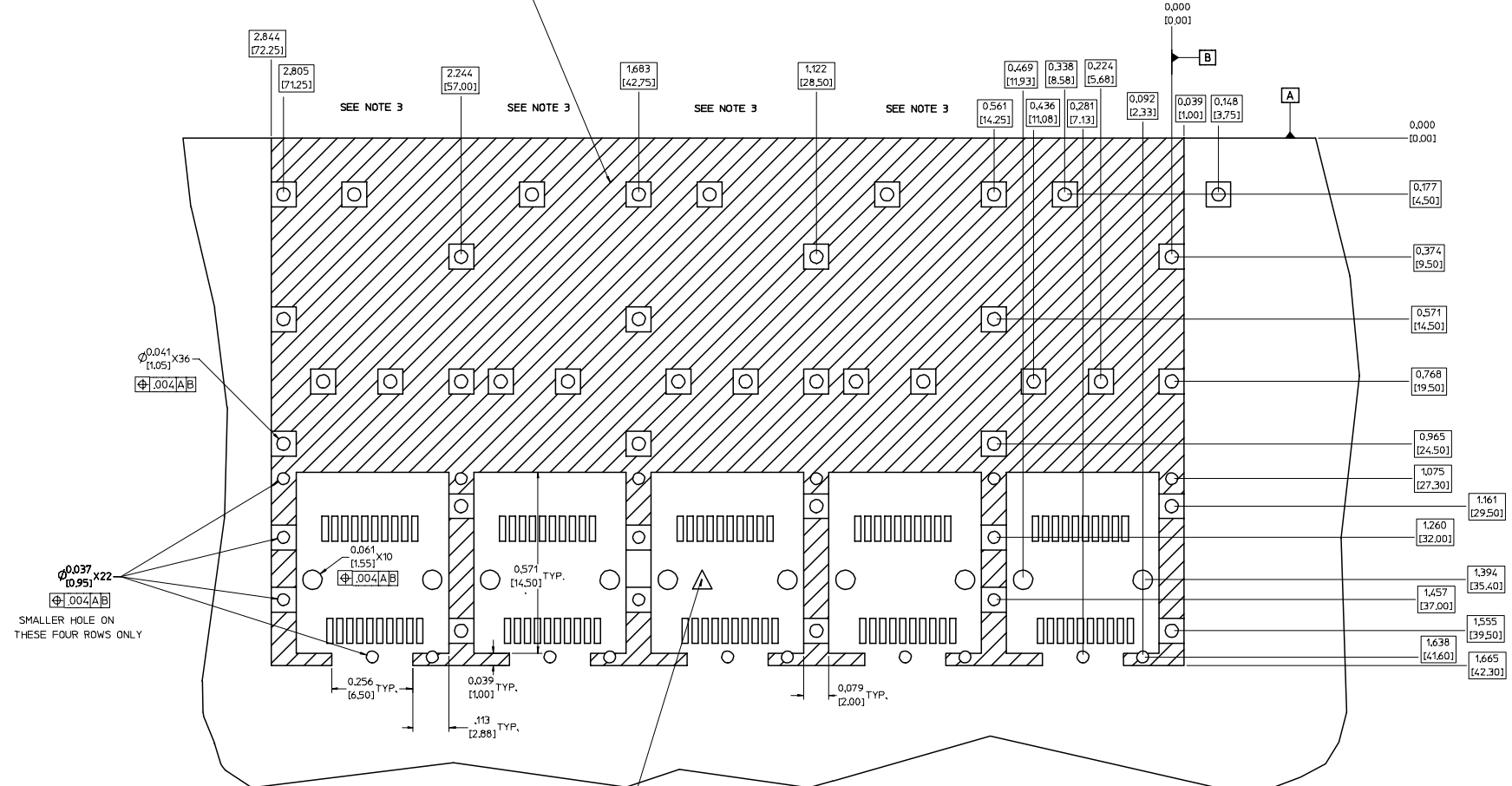
Detail1
SCALE 8:1

- NOTES:**
- PADS AND VIAS GO TO CHASSIS GROUND. (84 PLACES).
RECOMMENDED PADS TO BE 2mm SQUARE.
 - PLATING OPTIONAL FOR THROUGH HOLES (21 PLACES).
 - RECOMMENDED PLATING INCLUDES HASL, IMMERSION (GOLD, SILVER, OR TIN), AND OSP.
 - HOLE PATTERN REPEATS FOR EACH PORT.
SPACING BETWEEN PORTS IS .561 [14.25].
 - CONNECTOR PAD LAYOUT PER SFP MSA. WILL ACCOMMODATE MOLEX CONNECTOR SERIES 74441 OR EQUIVALENT.

ENTER DESCRIPTION EC NO: UST2006-026 DRAWN BY: DRANKS MONSON 2006/01/18 CHECKED BY: CHUCK BRUSSELL 2006/01/26 APPR: BRUSSELL 2006/01/25	QUALITY SYMBOLS	GENERAL TOLERANCES (UNLESS SPECIFIED)	DIMENSION STYLE	SCALE	DESIGN UNITS	THIRD ANGLE PROJECTION
	▽=0 ▽=0	mm INCH 4 PLACES ± --- ± --- 3 PLACES ± --- ± .005 2 PLACES ± 0.13 ± .010 1 PLACE ± 0.25 ± --- ANGULAR ± 1 °	IN/MM	6:1	METRIC	DRAWN BY: KS IMONSO 2004/01/26 CHECKED BY: BRUSSELL 2004/01/26 APPROVED BY: BRUSSELL 2004/01/26
	DRAFT WHERE APPLICABLE MUST REMAIN WITHIN DIMENSIONS	MATERIAL NO: 739270501	DOCUMENT NO: SD-73927-501	TITLE: 1X5 SFP GANGED CAGE ASSEMBLY, PRESS FIT MOLEX INCORPORATED		
	SIZE D	THIS DRAWING CONTAINS INFORMATION THAT IS PROPRIETARY TO MOLEX INCORPORATED AND SHOULD NOT BE USED WITHOUT WRITTEN PERMISSION		SHEET NO: 2 OF 5		

PCB LAYOUT FOR SINGLE SIDE MOUNTING

CROSS-HATCHED AREA DENOTES
COMPONENT AND TRACE KEEP-OUT
(EXCEPT CHASSIS GROUND)



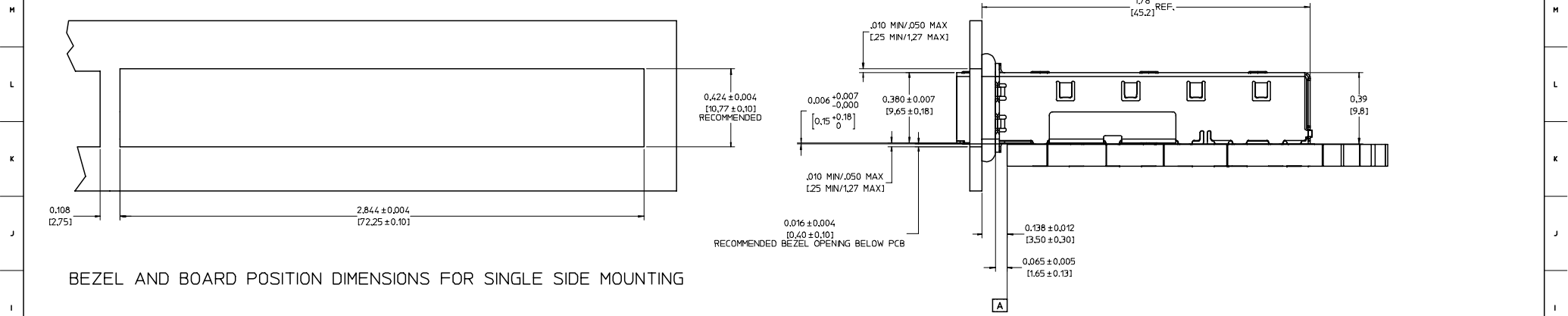
NOTES:

1. PADS AND VIAS GO TO CHASSIS GROUND. (42 PLACES).
RECOMMENDED PADS TO BE 2mm SQUARE.
2. PLATING OPTIONAL FOR THROUGH HOLES (16 PLACES).
3. RECOMMENDED PLATING INCLUDES HASL, IMMERSION (GOLD, SILVER, OR TIN), AND OSP.
4. HOLE PATTERN REPEATS FOR EACH PORT.
SPACING BETWEEN PORTS IS .561 (14.25).
5. CONNECTOR PAD LAYOUT PER SFP MSA. WILL ACCOMMODATE MOLEX
CONNECTOR SERIES 74441 OR EQUIVALENT.

THIS AREA DENOTES
COMPONENT KEEP-OUT
(TRACES ALLOWED)

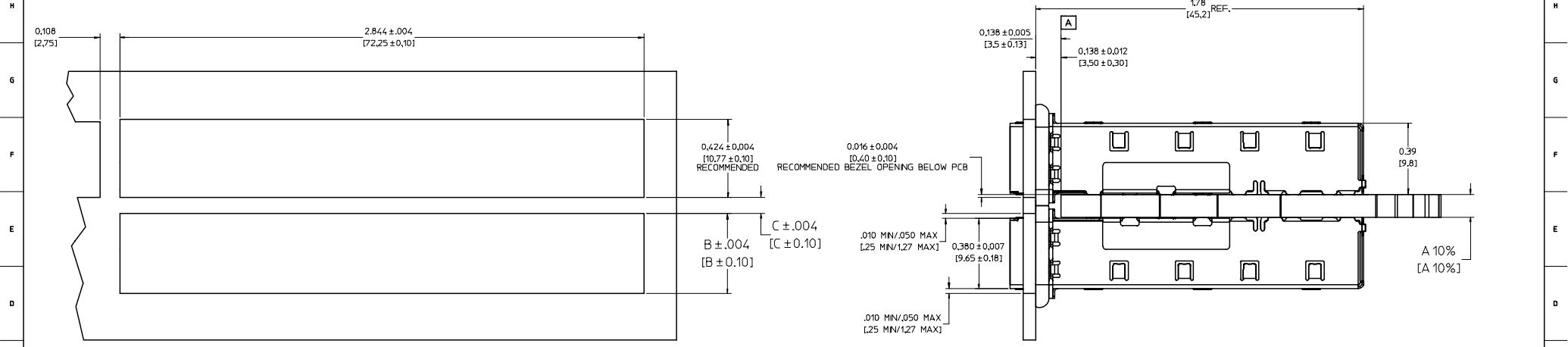
ENTER DESCRIPTION EC NO: UST2006-026 DRINKS IMONSO 2006/01/18 CHK: BRUSSELL 2006/01/26 APPR: BRUSSELL 2006/01/25	QUALITY SYMBOLS	GENERAL TOLERANCES (UNLESS SPECIFIED)	DIMENSION STYLE IN/MM	SCALE 6:1	DESIGN UNITS METRIC	THIRD ANGLE PROJECTION
	▽=0	4 PLACES ± --- ± ---	DRAWN BY KS IMONSO 2004/01/26	TITLE 1X5 SFP GANGED CAGE ASSEMBLY, PRESS FIT		
	▽=0	3 PLACES ± --- ± .005	CHECKED BY BRUSSELL 2004/01/26	MATERIAL NO. 739270501		
	▽=0	2 PLACES ± 0.13 ± .010 1 PLACE ± 0.25 ± --- ANGULAR ± 1 °	APPROVED BY BRUSSELL 2004/01/26	DOCUMENT NO. SD-73927-501		
DRAFT WHERE APPLICABLE MUST REMAIN WITHIN DIMENSIONS		SIZE D		SHEET NO. 3 OF 5		
THIS DRAWING CONTAINS INFORMATION THAT IS PROPRIETARY TO MOLEX INCORPORATED AND SHOULD NOT BE USED WITHOUT WRITTEN PERMISSION						

20 19 18 17 16 15 14 13 12 11 10 9 8 7 6 5 4 3 2 1



BEZEL AND BOARD POSITION DIMENSIONS FOR SINGLE SIDE MOUNTING

BEZEL AND BOARD POSITION DIMENSIONS FOR BELLY TO BELLY MOUNTING



NOTE: FOR A GIVEN BOARD THICKNESS (A), DIMENSIONS (B) AND (C) ARE DIRECTLY AFFECTED.

USE RECOMMENDED DIMENSIONS AND TOLERANCES TO AID IN DEVELOPING BEZEL OPENING.

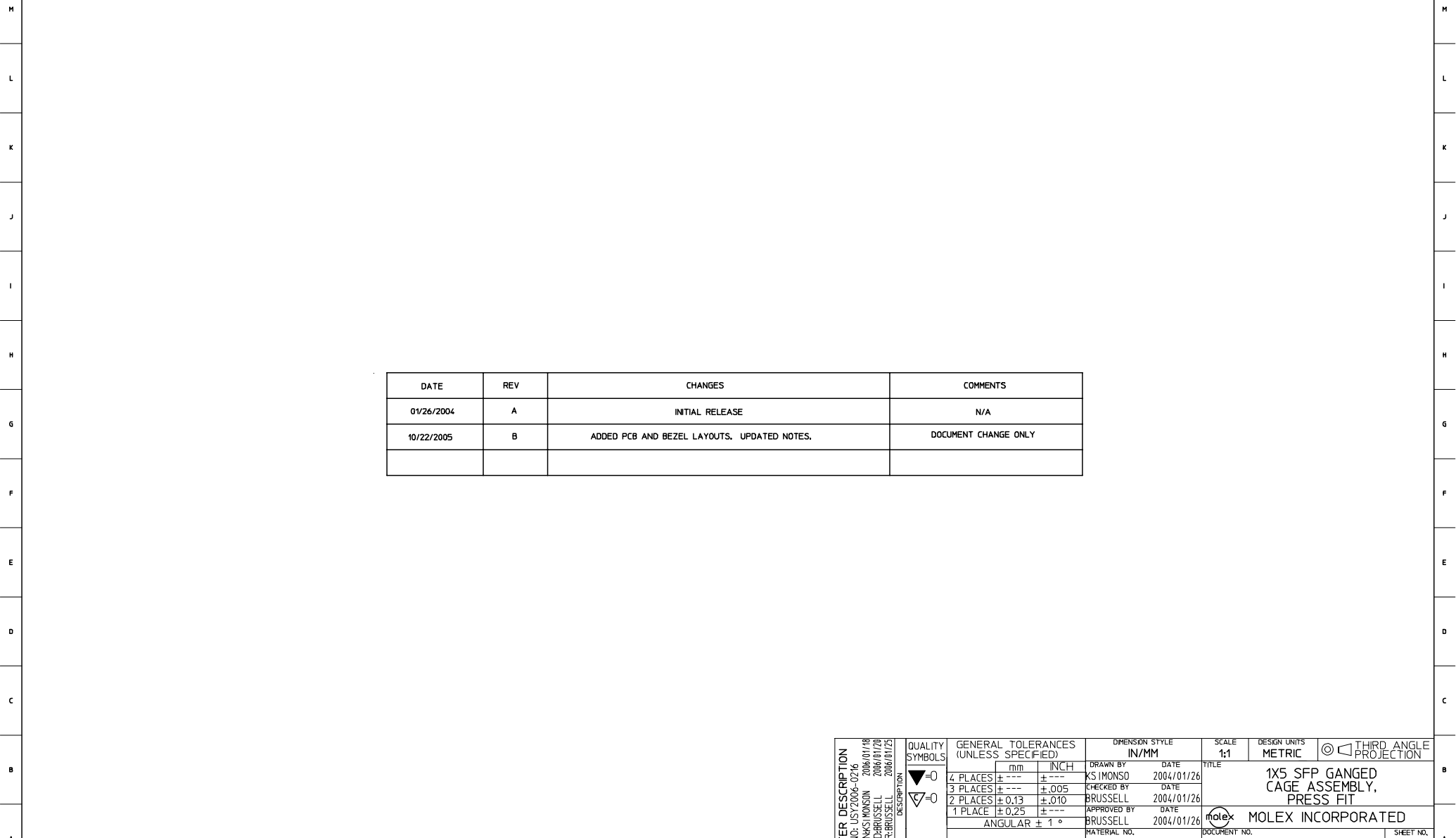
FOR EXAMPLE USING A BOARD THICKNESS OF .125" THE RECOMMENDED VALUES WOULD BE:

A= .125/3.18 ± 10%
 B= .434/11.03 ± .004
 C= .088/2.23 ± .004

ENTER DESCRIPTION EC NO: UST2006-02/6 DRWN: KJIMONSON 2006/01/18 CHKD: BRUSSELL 2006/01/26 APPR: BRUSSELL 2006/01/25	QUALITY SYMBOLS	GENERAL TOLERANCES (UNLESS SPECIFIED)		DIMENSION STYLE		SCALE	DESIGN UNITS	THIRD ANGLE PROJECTION	
	▽=0	mm	INCH	IN/MM		4:1	METRIC		
	▽=0	3 PLACES ± --- ± ---	± .005	DRAWN BY	DATE	TITLE			
		2 PLACES ± 0.13 ± .010	± .010	BRUSSELL	2004/01/26	1X5 SFP GANGED CAGE ASSEMBLY, PRESS FIT			
	1 PLACE ± 0.25 ± ---	± ---	APPROVED BY	DATE	MOLEX INCORPORATED				
	ANGULAR ± 1 °		BRUSSELL	2004/01/26					
DRAFT WHERE APPLICABLE MUST REMAIN WITHIN DIMENSIONS		MATERIAL NO.		DOCUMENT NO.		SHEET NO.			
		739270501		SD-73927-501		4 OF 5			
THIS DRAWING CONTAINS INFORMATION THAT IS PROPRIETARY TO MOLEX INCORPORATED AND SHOULD NOT BE USED WITHOUT WRITTEN PERMISSION									

19 18 17 16 15 14 13 12 11 10 9 8 7 6 5 4 3 2 1

20 19 18 17 16 15 14 13 12 11 10 9 8 7 6 5 4 3 2 1



DATE	REV	CHANGES	COMMENTS
01/26/2004	A	INITIAL RELEASE	N/A
10/22/2005	B	ADDED PCB AND BEZEL LAYOUTS. UPDATED NOTES.	DOCUMENT CHANGE ONLY

ENTER DESCRIPTION EC NO: UST2006-02/6 DRW:KS IMONSO 2004/01/18 CHK:BRUSSELL 2004/01/26 APPR:BRUSSELL 2004/01/25	QUALITY SYMBOLS ▽=0 ▽=0	GENERAL TOLERANCES (UNLESS SPECIFIED)		DIMENSION STYLE IN/MM		SCALE 1:1	DESIGN UNITS METRIC	THIRD ANGLE PROJECTION	
		4 PLACES ± --- ± --- 3 PLACES ± --- ± .005 2 PLACES ± 0.13 ± .010 1 PLACE ± 0.25 ± ---	mm INCH	DRAWN BY KS IMONSO	DATE 2004/01/26	TITLE 1X5 SFP GANGED CAGE ASSEMBLY, PRESS FIT			
		ANGULAR ± 1 °	DRAFT WHERE APPLICABLE MUST REMAIN WITHIN DIMENSIONS	CHECKED BY BRUSSELL	DATE 2004/01/26	APPROVED BY BRUSSELL			
		MATERIAL NO. 739270501	DOCUMENT NO. SD-73927-501	SIZE D		THIS DRAWING CONTAINS INFORMATION THAT IS PROPRIETARY TO MOLEX INCORPORATED AND SHOULD NOT BE USED WITHOUT WRITTEN PERMISSION			



MOLEX INCORPORATED

SHEET NO.
5 OF 5

19 18 17 16 15 14 13 12 11 10 9 8 7 6 5 4 3 2 1