

1

2

3

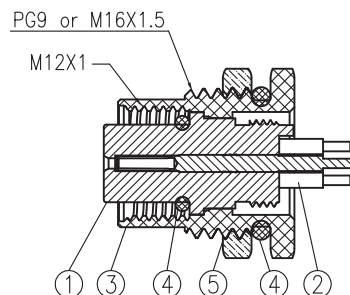
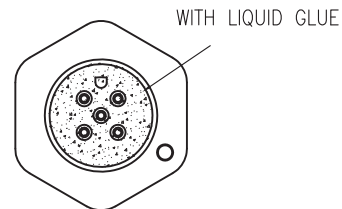
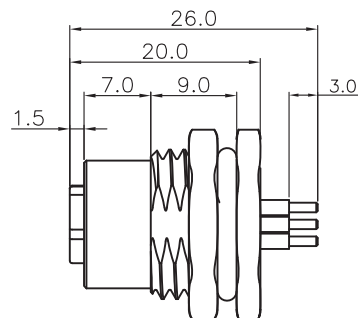
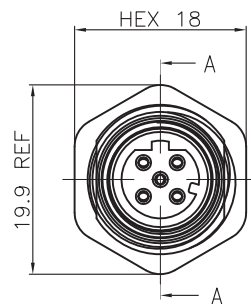
4

5

RoHS Compliant

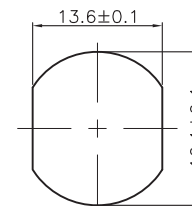
## Specifications:

Current Rating:4A(2~5Pin)AC/DC  
 Voltage Rating:250V(2~4Pin);60V(5Pin)AC/DC  
 Contact Resistance:5m ohm. Max.  
 Insulation Resistance:100M ohm. Min.  
 Withstanding Voltage:500V AC/Minute  
 Operating Temperature Range:-40°C ~ +100°C  
 Waterproof Rate:IP67  
 Material and Finish  
 See Table  
 How to Order  
 M12-XXS-FD-PBX

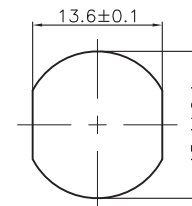


Section A-A

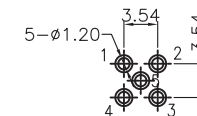
Panel Lock Thread  
 1:PG9  
 2:M16  
 Panel Mount PCB Dip  
 Front Fastened D Coding Die Casting  
 Socket  
 No.of Contacts  
 M12



M16 Recommended  
 Panel CUT-Out  
 Thickness:4.0mm

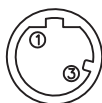


PG9 Recommended  
 Panel CUT-Out  
 Thickness:4.0mm

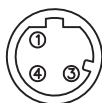


2~5P Recommended PCB Layout  
 TOL:±0.05mm

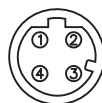
Pin Assignments Front View



2Pin



3Pin



4Pin



5Pin

ITEM	Description	Material	Remark	Q'TY
1	Insulator	Nylon	UL94V-0 Black	1
2	Terminal	Copper Alloy	Gold Plated 1u"	2~5
3	Shell	Zinc Alloy	Nickel Plated 60u"	1
4	Seal ring	Silicone	Red	2
5	Nut	Copper Alloy	PG9 or M16 Nickel Plated 60u"	1

F				
E				
D				
C				
B				
A	27-MAR-2021		JOY	
REV	DATE	FILE	BY	

DRAWN:	JOY
CHECKED:	BILL
APPROVAL:	JOY
BILL	

GENERAL TOLERANCE:	.X=±0.3 .XX=±0.2
UNIT:	MM
SCALE:	1:1
SHEET:	1/1
PROJECTION:	

ON-SHORE TECHNOLOGY, INC.

DESCRIPTION:

M12 D CODE SOCKET STRAIGHT DIP TYPE

PART NO:

M12-XXS-FD-PBX

A

B

C

D