

RPT5500

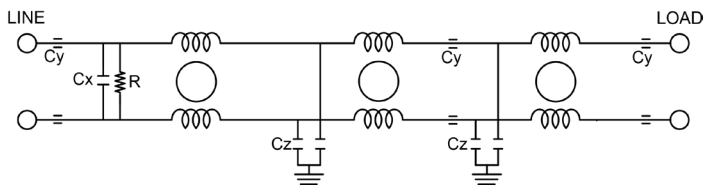
TEMPEST/COTS AC EMI POWER LINE FILTER

FEATURES

- » Rated currents include **5A, 10A, 15A, 25A, 30A, and 35A**
- » Multi Stage Line Filter
- » Available with **S** (studs)
- » Agency Approved to RoHS
- » Y-cap value can be adjusted to fit specification



ELECTRICAL SCHEMATIC



SPECIFICATIONS

OPERATING FREQUENCY	50/60/400 Hz
MAX. OPERATING VOLTAGE*	300 VAC +10%
AMBIENT TEMPERATURE	-40 TO 70°C
CLIMATIC CATEGORY	25/100/21
TERMINALS (-T)	STUDS: 5-35A (M5)
TYP. WEIGHT, LBS (KG)	3.2 - 6(1.45 - 2.72)

HIPOT RATINGS

LINE TO GROUND	1500 VDC
----------------	----------

TYPICAL APPLICATIONS

- ✓ TEMPEST/Mil-461/DO-160

NOTE:

- ✓ Call for other termination types (e.g. Circular Mil Connectors, etc.)

HOW TO ORDER

RPT5500 - Y - Z

Z = TERMINAL (-T)
X = RATED CURRENT

RPT5500=FILTER SERIES

NOTE: USE ANY COMBINATION OF -X (AMPS) WITH ANY -Y RATINGS

E.G. **RPT5500-5-S** (5 AMPS)

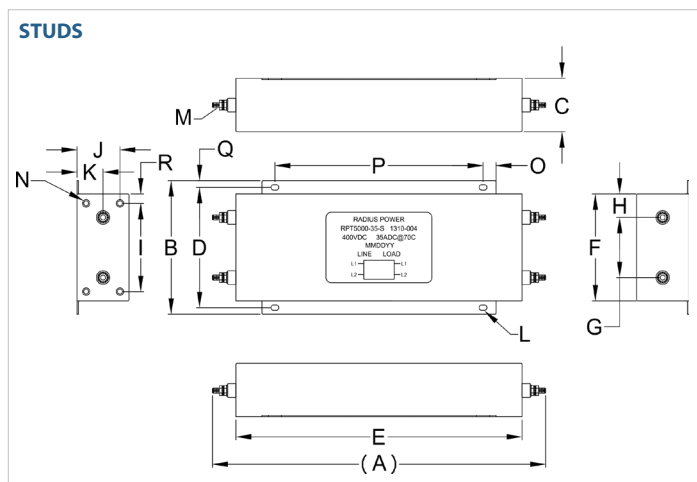
For **X** and **Y** options see product specification table.

RPT5500

TEMPEST/COTS AC EMI POWER LINE FILTER

MODEL NO.	RATED CURRENT, A @ 40° C	LEAKAGE CURRENT mA, @ 250V AC/60 Hz	TERMINAL OPTIONS			MAX. DIMENSIONS" (MM)		
			(QD) INPUT/ OUTPUT	(W) INPUT/ OUTPUT	(S) INPUT/ OUTPUT	WIDTH	(LENGTH)	HEIGHT
RPT5500-5-S	5	3.50			✓	4.50"(114)	9.70"(246)	2.00"(51)
RPT5500-10-S	10	3.50			✓	4.50"(114)	9.70"(246)	2.00"(51)
RPT5500-15-S	15	3.50			✓	5.00"(127)	12.81"(325)	2.00"(51)
RPT5500-25-S	25	3.50			✓	5.00"(127)	12.81"(325)	2.00"(51)
RPT5500-30-S	30	3.50			✓	5.00"(127)	12.81"(325)	2.00"(51)
RPT5500-35-S	35	3.50			✓	5.00"(127)	12.81"(325)	2.00"(51)

RPT5500 MECHANICAL OUTLINES (MM)



SERIES	(A)	B	C	D	E	F	G	H	I	J	K	L	M	N	O	P	Q
STUDS (5/10A)	9.70" (246)	4.50" (114)	2.00" (51)	4.00" (102)	8.00" (203)	3.50" (89)	1.75" (45)	0.87" (22)	2.80" (71)	1.65" (42)	0.35" (9)	Ø 0.50"x0.20", 4x (Ø 12.7x5.1, 4x)	STUD, M5, 4x	INSERT, 6-32, 4x	0.38" (10)	5.25" (133)	0.25" (6)
STUDS (15/25//30/35A)	12.81" (325)	5.00" (127)	2.00" (51)	4.50" (114)	11.00" (279)	4.00" (102)	2.25" (57)	0.87" (22)	3.30" (84)	1.65" (42)	1.00" (25)	Ø 0.29"x0.20", 4x (Ø 7.6x5.0, 4x)	STUD, M5, 4x	INSERT, 6-32, 4x	0.50" (13)	8.00" (203)	0.25" (6)

TYPICAL TOLERANCE: +/-0.02" (0.50MM)

RPT5500

TEMPEST/COTS AC EMI POWER LINE FILTER

TYPICAL INSERTION LOSS, dB (50/50 Ohm)

Amps	Freq (MHz)	0.15	0.5	1.0	10	30
5	CM (dB)	60	80	100	100	100
	DM (dB)	-	-	-	-	-
10	CM (dB)	60	80	100	100	100
	DM (dB)	-	-	-	-	-
15	CM (dB)	60	80	100	100	100
	DM (dB)	-	-	-	-	-
25	CM (dB)	60	80	100	100	100
	DM (dB)	-	-	-	-	-
30	CM (dB)	60	80	100	100	100
	DM (dB)	-	-	-	-	-
35	CM (dB)	60	80	100	100	100
	DM (dB)	-	-	-	-	-