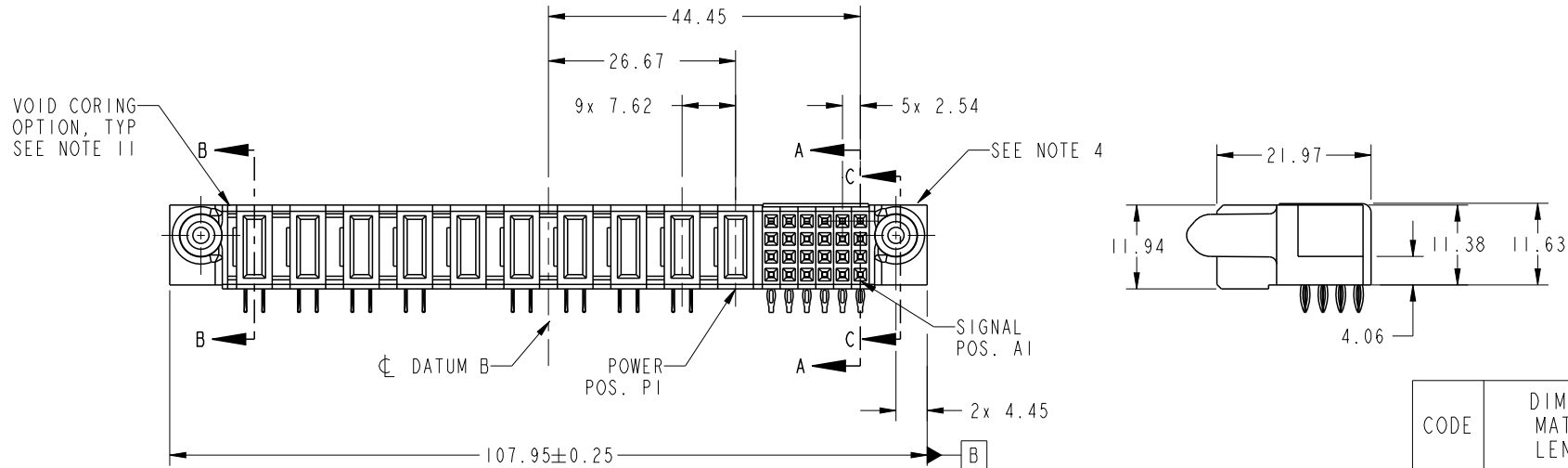


PRODUCT NO. 51866-053-- NOTE 3	ROWS D C B A	POWER										SIGNAL					E1		
		E2	P10	P9	P8	P7	P6	P5	P4	P3	P2	P1	6	5	4	3		2	1
			PE	PE	PE	PE	X	PE	PE	PE	PE	X	S	S	S	S	S	S	
													R	R	R	R	R	R	
													P	P	P	P	P	P	
													N	N	N	N	N	N	

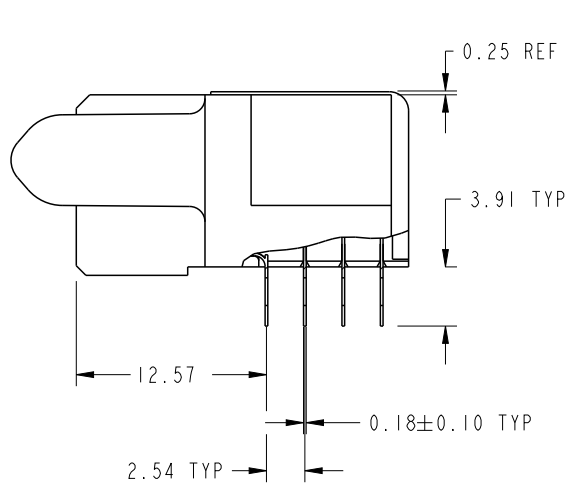


CODE	DIM "M" MATING LENGTH	CONTACT TYPE
PE	[1.07]	POWER
S	[N/A]	SIGNAL
R	[N/A]	SIGNAL
P	[N/A]	SIGNAL
N	[N/A]	SIGNAL

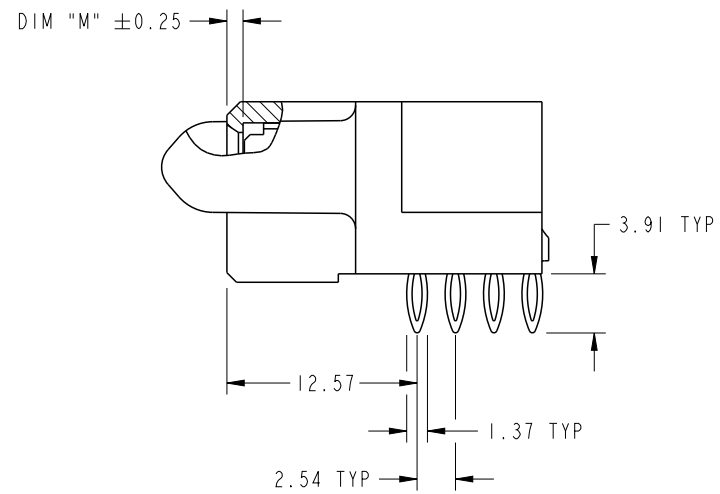
spec ref	SEE NOTES			dr	Luo Weller	2013/01/10	projection 	MM ←→	size	A4	scale	1:1
tolerance std	TOLERANCES UNLESS OTHERWISE SPECIFIED			eng	Luo Weller	2013/02/04			ecn no	-		
SEE NOTES				chr	-	-			rel level	Released		
surface ✓	linear	0.X	±0.50	FCI www.fci.com	title	24S+10ACP R/A PRESS-FIT RECEPTACLE	cat. no.	Product - Customer Drw	dwg no	51866-053	rev	A
		0.XX	±0.25									
angular	0°	±2°										

PRODUCT NUMBER

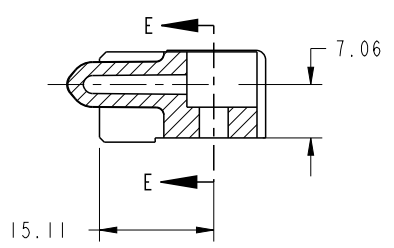
51866-053__
NOTE 3



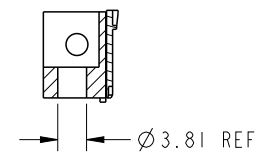
BROKEN-OUT SECTION A-A
SCALE 2:1



BROKEN-OUT SECTION B-B
SCALE 2:1



SECTION C-C

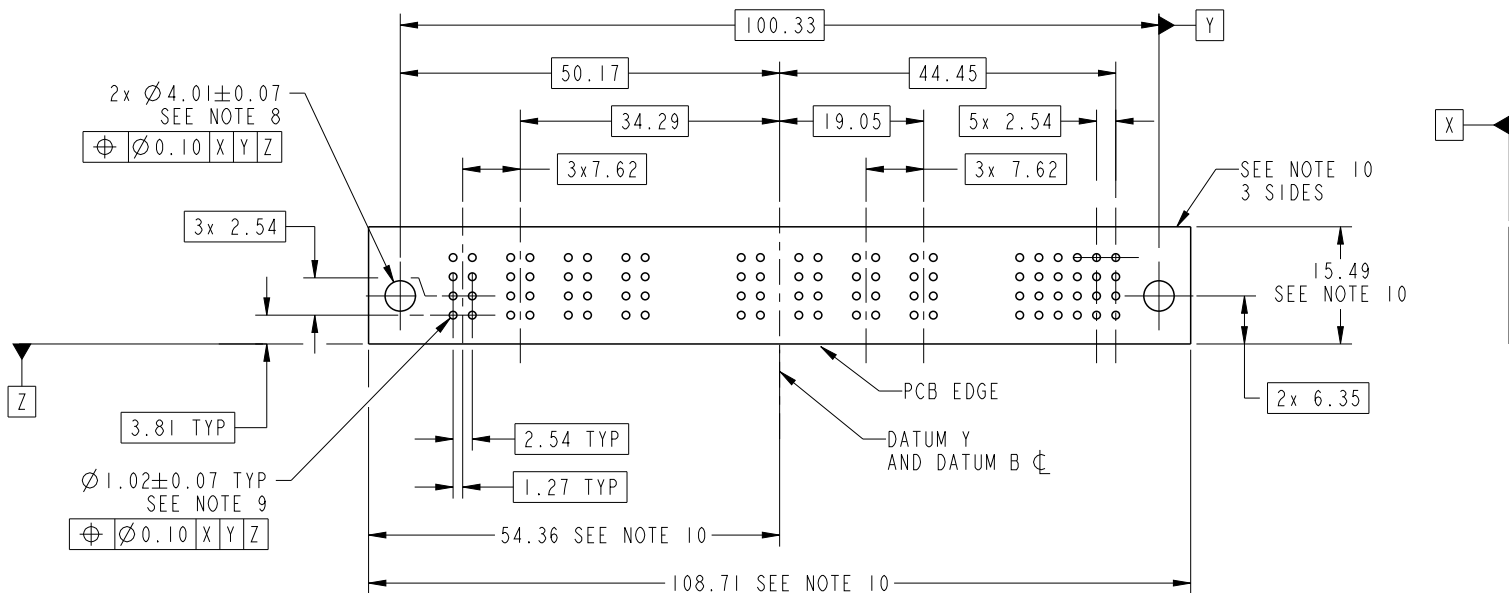


PARTIAL SECTION E-E

dr	Luo Weller	2013/01/10	projection 	MM ←→	size	A4	scale	1:1
eng	Luo Weller	2013/02/04			ecn no	-		
chr	-	-						
appr	Pei-Ming Zheng	2013/02/04	product family	PwrBlade	rel level	Released		
	title	24S+10ACP R/A PRESS-FIT RECEPTACLE		dwg no	51866-053		rev	A
www.fci.com	cat. no.	Product - Customer Drw			sheet 2 of 4			

PRODUCT NUMBER

51866-053__
NOTE 3



RECOMMENDED PCB LAYOUT

dr	Luo Weller	2013/01/10	projection 	MM 	size	A4	scale	1:1
eng	Luo Weller	2013/02/04			ecn no	-		
chr	-	-			rel level	Released		
appr	Pei-Ming Zheng	2013/02/04	product family	PwrBlade	rel level	Released		
	title	24S+10ACP R/A PRESS-FIT RECEPTACLE		dwg no	51866-053		rev	A
www.fci.com	cat. no.	Product - Customer Drw			sheet 3 of 4			

PRODUCT NUMBER

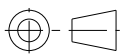
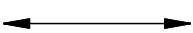

51866-053__
NOTE 3

NOTES:

1. DIMENSIONS AND TOLERANCES ARE IN ACCORDANCE WITH ASME Y14.5M, 1994 UNLESS OTHERWISE SPECIFIED.

CONNECTOR NOTES:

- 2. HOUSING MATERIAL: UL 94 V-0 GLASS FILLED HIGH-TEMP THERMOPLASTIC
POWER CONTACT MATERIAL: COPPER ALLOY
SIGNAL PIN MATERIAL: COPPER ALLOY
 - 3. SEE ITEM 7 & 8 IN PRINT 10064183 FOR PLATING SPEC OF 51866-053 AND 51866-053LF RESPECTIVELY.
 - 4. MANUFACTURER'S NAME, DATE CODE AND OPTIONAL P/N TO APPEAR ON THIS SURFACE. THE MARK CAN BE OMITTED IF THERE IS NOT ENOUGH SPACE ON THIS SURFACE.
 - 5. PRODUCT SPECIFICATION GS-12-149.
APPLICATION SPECIFICATION BUS-20-067.
 - 6. PACKAGED IN TRAYS.
- PCB NOTES:
- 7. ALL HOLE DIAMETERS ARE FINISHED HOLE SIZE.
 - 8. MOUNTING HOLES, WHERE APPLICABLE, ARE UNPLATED.
 - 9. $\varnothing 1.151 \pm 0.025$ DRILLED HOLES PLATED WITH
0.008 MIN SnPb OR Sn OVER 0.03
TO 0.08 Cu PLATING TO ACHIEVE
 $\varnothing 1.02 \pm .07$ HOLE.
 - 10. CONNECTOR KEEP-OUT ZONE.
 - 11. THE VOID CORING IN BETWEEN POWER MODULES, SIGNAL MODULES AND END MODULES ARE OPTIONAL AND THE SHAPE MAY BE DIFFERENT FOR OPTIMIZE THE MOLDING PROCESS. THE VOID CORING WILL NOT EFFECT TO PRODUCT FUNCTION.
 - 12. USE FCI CAM TOOL 430140-XXX TO APPLY CONNECTOR TO PCB.

dr	Luo Weller	2013/01/10	projection 	MM 	size	A4	scale	1:1
eng	Luo Weller	2013/02/04			ecn no	-		
chr	-	-			product family	PwrBlade	rel level	Released
appr	Pei-Ming Zheng	2013/02/04			title 24S+10ACP R/A PRESS-FIT RECEPTACLE	dwg no 51866-053	rev A	
www.fci.com		cat. no.	Product - Customer Drw			sheet 4 of 4		



Copyright FCI.