

K Series

General Purpose RFI Power Line Filters Best Buy for High Impedance Load 1, 2, 3, 5, 10A Models

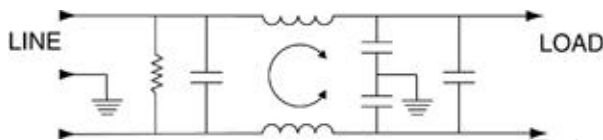


UL Recognized
CSA Certified
VDE Approved
SEV Approved*

K Series

The K series RFI power line filters are general purpose common-mode and differential-mode filters. They are effective in the control of line-to-line as well as line-to-ground RFI interference. The K series RFI filters are particularly suited in applications where pulsed, continuous and/or intermittent RFI interference is present. The EK models meet the very low leakage current requirements of SEV, VDE portable equipment, and (120 Volt) UL544 nonpatient medical equipment.

Electrical Schematic



Resistor location for reference only.



Specifications

	VK Models	EK Models
Maximum leakage current, each line-to-ground		
@ 120VAC 60 Hz:	.4 mA	.21 mA
@ 250VAC 50 Hz:	.7 mA	.36 mA
Hipot rating (one minute):		
line-to-ground		2250 VDC
line-to-line		1450 VDC
Operating frequency:		50/60 Hz
Rated voltage:		120/250 VAC
Rated current:	@ 120VAC	@ 250VAC
1VK/1EK	1A	1A
2VK/2EK	2A	2A
3VK/3EK	3A	3A
5VK/5EK	5A	5A
10VK/10EK	10A	8A
10VK6	10A	8A

Minimum insertion loss in dB:
Line-to-ground in 50 ohm circuit

Current Rating	Frequency-MHz				
	.15	.5	1	5	10

VK Models	.15	.5	1	5	10	30
1A, 3A	15	30	38	50	50	50
2A, 5A, 10A	6	19	28	42	45	50

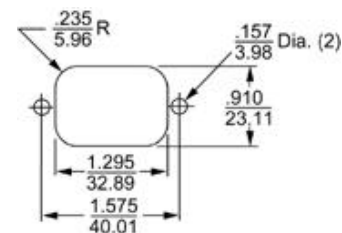
EK Models	.15	.5	1	5	10	30
1A, 3A	15	29	35	45	45	50
2A, 5A, 10A	8	19	25	38	40	45

Line-to-line in 50 ohm circuit

Current Rating	Frequency-MHz				
	.15	.5	1	5	10

VK, EK Models	.15	.5	1	5	10	30
1A, 3A	-	-	48	55	50	35
2A, 5A, 10A	-	-	30	50	30	30

Recommended Panel Cutout (K7 & K7M)



Panel Cutout (Back Mount) Tolerance: ± .005 / 0.13

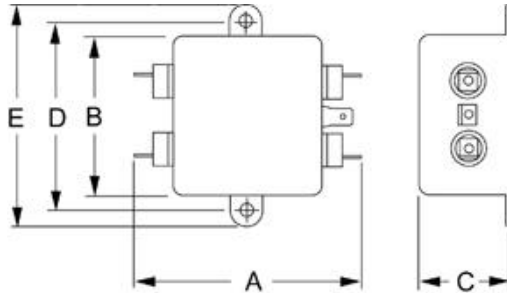
* EK models only.

Series K

Case Styles

Metric shown in italics.

K1

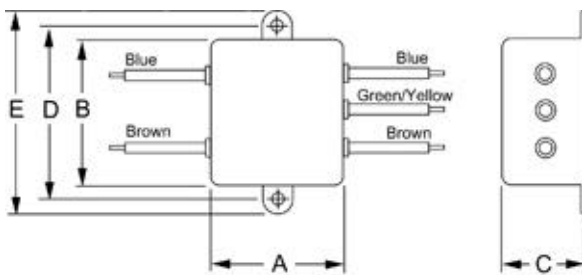


Typical dimensions

Terminals: $\frac{.250}{6.35}$ (5) Holes: $\frac{.07}{1.8}$ Dia.(4) Slot: $\frac{.07 \times .16}{1.8 \times 4.1}$

Mounting holes: $\frac{.188}{4.78}$ Dia. (2)

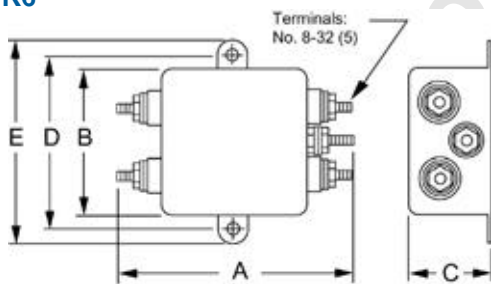
K3



Typical dimensions

Wire leads: $\frac{4.0}{101.6}$ Min. Mounting holes: $\frac{.188}{4.78}$ Dia. (2)

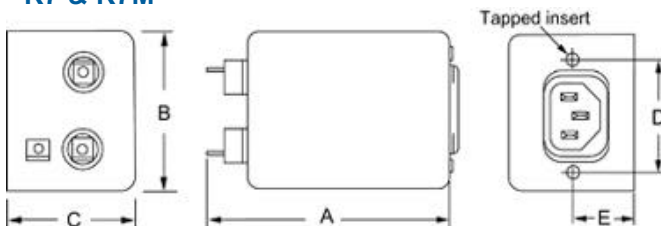
10VK6



Typical dimensions

Mounting holes: $\frac{.188}{4.78}$ Dia. (2) Torque 18±2 in. lb.

K7 & K7M



Typical dimensions

Terminals: $\frac{.250}{6.35}$ (3) Holes: $\frac{.07}{1.8}$ Dia.(2) Slot: $\frac{.07 \times .16}{1.8 \times 4.1}$

Case Dimensions

Metric shown in italics.

Part No.	A (max)	B (max)	C (max)	D $\pm .015$ $\pm .38$	E
1VK1, 1EK1	3.1	2.07	0.91	2.375	2.81
2VK1, 2EK1	78.7	52.6	23.1	60.33	71.4
1VK3, 1EK3	1.81	2.07	0.91	2.375	2.81
2VK3, 2EK3	46.0	52.6	23.1	60.33	71.4
3VK1, 3EK1	3.10	2.07	1.16	2.375	2.81
5VK1, 5EK1	78.7	52.6	29.5	60.33	71.4
3VK3, 3EK3	1.81	2.07	1.16	2.375	2.81
5VK3, 5EK3	46.0	52.6	29.5	60.33	71.4
3VK6, 3VK7M	3.21	2.25	1.28	1.575	0.63
3EK7, 3EK7M	81.5	57.2	32.5	40.01	16.0 †
5VK7, 5VK7M	3.21	2.25	1.28	1.575	0.63
5EK7, 5EK7M	81.5	57.2	32.5	40.01	16.0 †
10VK1, 10EK1	3.35	2.07	1.16	2.375	2.81
	85.1	52.6	29.5	60.33	71.4
10VK3, 10EK3	2.07	2.07	1.16	2.375	2.81
	52.6	52.6	29.5	60.33	71.4
10VK6	3.46	2.07	1.16	2.375	2.81
	87.9	52.6	29.5	60.33	71.4
10VK7, 10VK7M	3.71	2.25	1.28	1.575	0.63
10EK7, 10EK7M	94.2	57.2	32.5	40.01	16.0 †

† $\pm .02$
 $\pm .5$

Ordering Information

Consult your local Corcom sales representative for pricing.

Available Part Numbers

1VK1	5VK1	1EK1	5EK1
1VK3	5VK3	1EK3	5VK3
2VK1	5VK7	2EK1	5EK7
2VK3	5VK7M	2EK3	3EK7M
3VK1	10VK1	3EK1	10EK1
3VK3	10VK3	3EK3	10EK3
3VK7	10VK6	3EK7	10EK7
3VK7M	10VK7	3EK7M	10EK7M
	10VK7M		