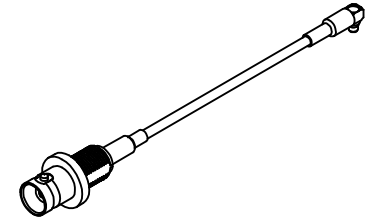


MATERIALS AND FINISHES

MMCX PLUG R/A  
 BODY, CENTER CONTACT,  
 CRIMP TUBE,  
 BRASS  
 PLATED GOLD

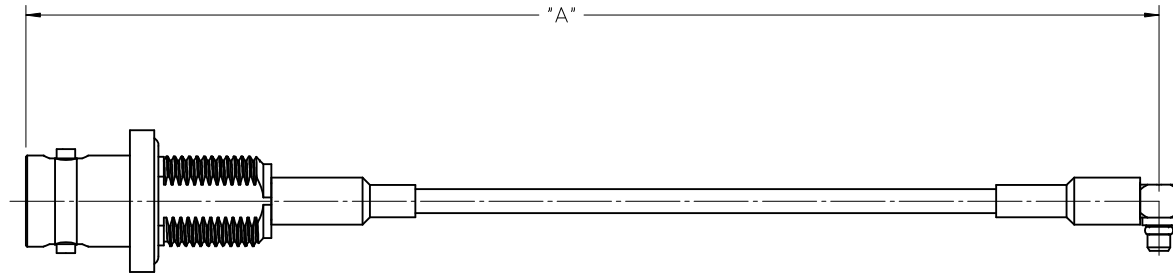
INSULATOR, TEFLON



BNC JACK STR

BODY, REAR BODY, JAM NUT  
 CRIMP TUBE, RETAINING RING  
 BRASS  
 PLATED NICKEL

CENTER CONTACT,  
 BERYLLIUM COPPER  
 PLATED GOLD

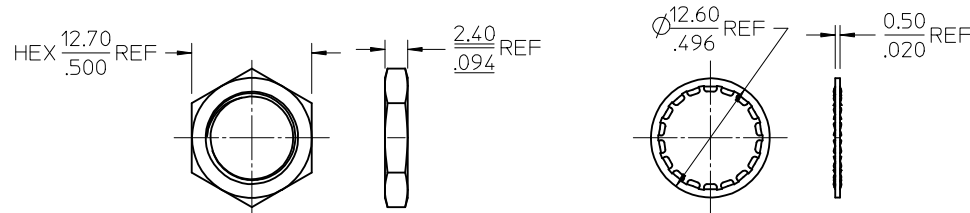


REAR CONTACT,  
 BRASS  
 PLATED GOLD

LOCK WASHER,  
 PHOSPHOR BRONZE  
 PLATED NICKEL

INSULATOR, TEFLON

O RING, SILICONE RUBBER



CABLE RG174

HEAT SHRINK TUBE VERSAFIT V2

PACKAGING BY POLYBAG

89761-2561	13.780±.197	350.00±5.00
89761-2560	9.448+.197/-0	240.00+5.00/-0
PART NO.	IN	MM
DIM X	A	

CHG: REVISED THREAD DIM OF BODY EC NO: URF2009-0398 2009/02/04 DRWN: MCHANOS 2009/02/04 CHKD: 2009/02/04 APPR: MHUANG 2009/02/04	QUALITY SYMBOLS ▼=0 ▽=0	GENERAL TOLERANCES (UNLESS SPECIFIED)		DIMENSION STYLE MM/IN	SCALE METRIC	DESIGN UNITS METRIC	THIRD ANGLE PROJECTION	
		4 PLACES ± --- ± --- 3 PLACES ± --- ± --- 2 PLACES ± --- ± --- 1 PLACE ± --- ± ---		DRAWN BY MICHAEL	DATE 2007/07/03	TITLE CABLE ASSY,MMCX PLUG R/A TO BNC JACK STR, RG 174 CA-MMCXP/BNCJ, PDR08-001		
		ANGULAR ± 2 °		CHECKED BY KERRIE	DATE 2007/07/03	MOLEX INCORPORATED		
		DRAFT WHERE APPLICABLE MUST REMAIN WITHIN DIMENSIONS		APPROVED BY MISEN	DATE 2007/07/03	MATERIAL NO. 897612560	DOCUMENT NO. SD-89761-256	SHEET NO. 1 OF 1

THIS DRAWING CONTAINS INFORMATION THAT IS PROPRIETARY TO MOLEX INCORPORATED AND SHOULD NOT BE USED WITHOUT WRITTEN PERMISSION