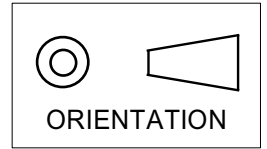


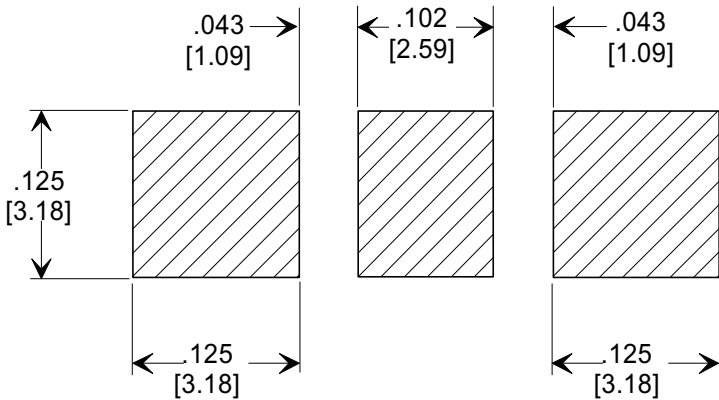
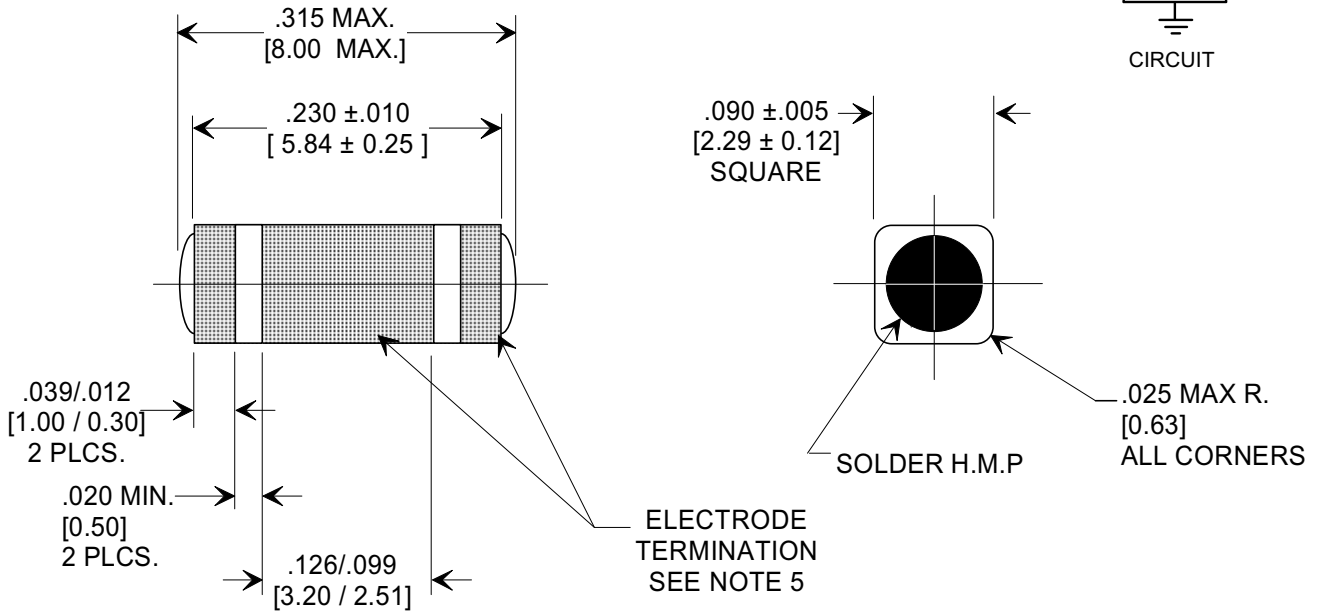
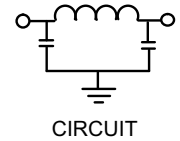
MARKETING SALES DRAWING

DIMENSIONS IN INCHES - DO NOT SCALE THIS DRAWING
DIMENSIONS IN METRIC []

This drawing is the property of Tusonix, Inc., and may not be used, reproduced, published or disclosed to others without expressed authorization by Tusonix Inc.



Electrical Testing
per Tusonix standard
test plans and Mil-Std-202
Test Methods.



SUGGESTED MOUNTING PATTERN

1. INDUCTANCE TO BE 0.1 μH MINIMUM.
2. PACKAGE: BLISTER TAPE TO IEC-60286-3 TYPE II AND EIA-481-A. FOR 2,000 PIECE REEL ADD "M" TO THE PART NUMBER FOR 7,000 PIECE REEL ADD "T" TO THE PART NUMBER
3. TUSONIX NON-RoHS PART NUMBER: 4700-003 M OR 4700-003 T . TUSONIX RoHS COMPLIANT PART NUMBER: 4700-003 M LF OR 4700-003 T LF. CUSTOMER MUST SPECIFY STANDARD OR RoHS PART NUMBER WHEN ORDERING.
4. PART MARKING: STANDARD PART: NO MARKING. RoHS PART: LABELED ON PACKAGING ONLY.
5. ELECTRODE TERMINATION: STANDARD 60/40 SOLDER; RoHS COMPLIANT - MATTE TIN.

CAP.	TOLERANCE	WVDC		TEST VOLTAGE	I.R.MIN. @ 100 (VDC.)	IDC	TYPICAL NO LOAD INSERTION LOSS dB AT 25°C PER MIL-STD-220		
		85°C	+125°C				10 MHZ	100 MHZ	1 GHZ
2000 pF	GMV	100	100	300 VDC	10 G Ω	10 A	10	45	70

X-2015 Rev-0

REVISION RECORD	0	Original Release	941020-1	ADDED DC COLUMN	E.C. 10-26-94
	1	REISSUE	941020-1	DIM. .230 WAS .238	E.C. 11-16-94
	2	REISSUE	941020-1	REVISED DWG. ORIENTATION SYMBOL & I.R. MIN. @ 100 (VDC) ADDED S.M. 02-13-03	
	3	20030213-1-12	REVISED DRAWING.	S.M. 06-20-03	
	4	20030619-2-01	ADDED NOTES 3,4 & 5.	S.M. 06-10-05	
	5	20050607-5-02	ADDED PROPERTY NOTE.	S.M. 03-09-07	
	6	20070301-1-01	NOTES 2,3 REVISED	L.E. 10-08-12	
	B	ECO-3124			
		--TOLERANCES-- Unless Otherwise Specified		Title	
		DECIMAL ± .005 [0.13]		SURFACE MOUNT SQUARE STYLE PI FILTER	
		ANGLES ±		Drawn	Scale
				FG 9-9-94	7 X
				Approved	
				NV 9-9-94	
		TUSONIX TUCSON, ARIZONA		A	4700-003