

Light is OSRAM

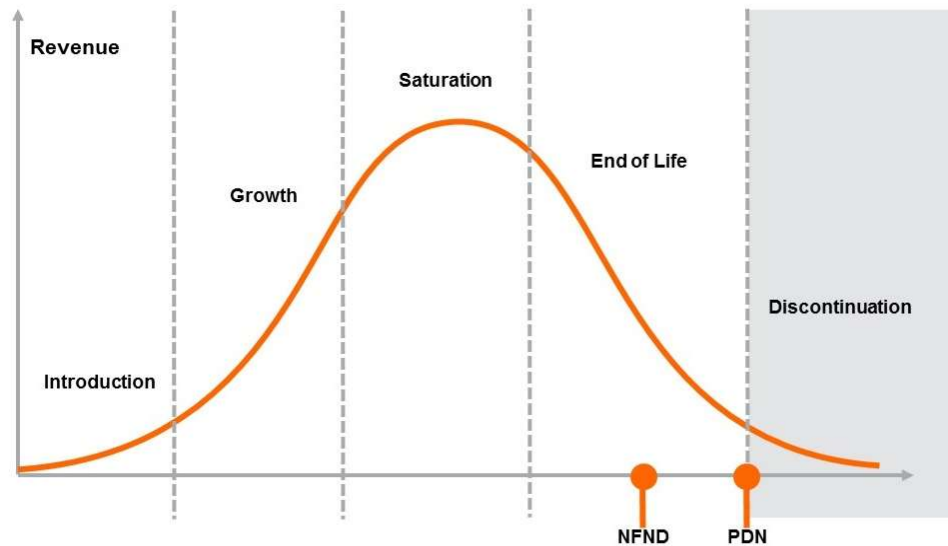
Not For New Designs OS-NFND-2020-006

1-Sep-20

Expected discontinuation date: 6 months

Reason: end of product life

OSRAM OS Expectations: Please use our recommended replacement for new designs. If they may not fit, please contact your local sales office for other solutions. Additionally we ask you to switch for running project as soon as possible to the proposed replacement. Anyway please check your demand and feedback your requested lifetime of these products. Attention: Q# already announced to be in phase-out process will not be impacted. Dates published in corresponding PDN will be kept.



Please direct your feedback to your local Sales office.

| Not for new design products | | Recommended Replacement | | | |
|-----------------------------|---------------|-------------------------|---------------|-------------------------|-------------------------|
| Device | Brand | Device | Brand | Datasheet Ordering Code | Expected PDN start |
| KW DPLS32.SB | SYNIOS P 4014 | KW DPLS31.SB | SYNIOS E 4014 | Q65112A7340 | 2021-04-01 (April 2021) |

Affected QNO Affected Part Numbers

Q65112A1189 KW DPLS32.SB-6H6J-E4P7-EG-Z264-120-R18
Q65112A4398 KW DPLS32.SB-6H6J-E5P7-EG-Z264-120-R18
Q65112A6589 KW DPLS32.SB-6H8H-K6N7-E-1-120-R18-S-XX
Q65112A6588 KW DPLS32.SB-6H8H-L6P7-E-1-120-R18-S-XX
Q65112A6590 KW DPLS32.SB-6H8H-M5P6-E-1-120-R18-S-XX
Q65112A6587 KW DPLS32.SB-6H8H-M6P7-E-1-120-R18-S-XX
Q65112A6581 KW DPLS32.SB-7H5J-K6N7-E-1-120-R18-S-XX
Q65112A6580 KW DPLS32.SB-7H5J-L6P7-E-1-120-R18-S-XX
Q65112A6582 KW DPLS32.SB-7H5J-M5P6-E-1-120-R18-S-XX
Q65112A6579 KW DPLS32.SB-7H5J-M6P7-E-1-120-R18-S-XX
Q65112A6591 KW DPLS32.SB-8H5J-H5J6-E-1-120-R18-XX
Q65112A6585 KW DPLS32.SB-8H5J-K6N7-E-1-120-R18-S-XX
Q65112A6584 KW DPLS32.SB-8H5J-L6P7-E-1-120-R18-S-XX
Q65112A6586 KW DPLS32.SB-8H5J-M5P6-E-1-120-R18-S-XX
Q65112A6583 KW DPLS32.SB-8H5J-M6P7-E-1-120-R18-S-XX