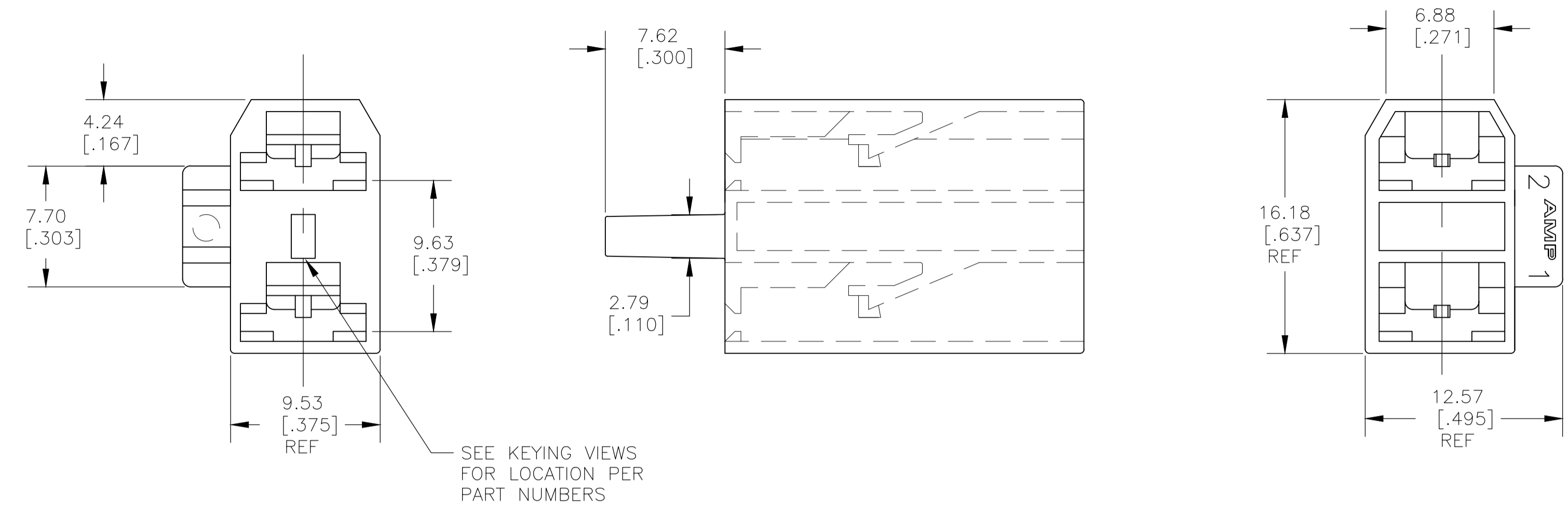
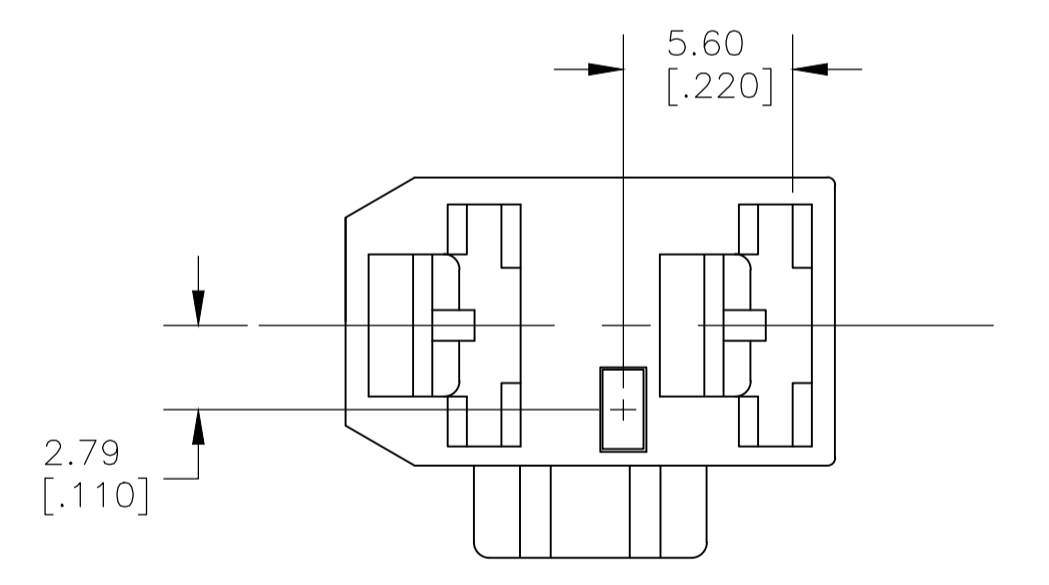
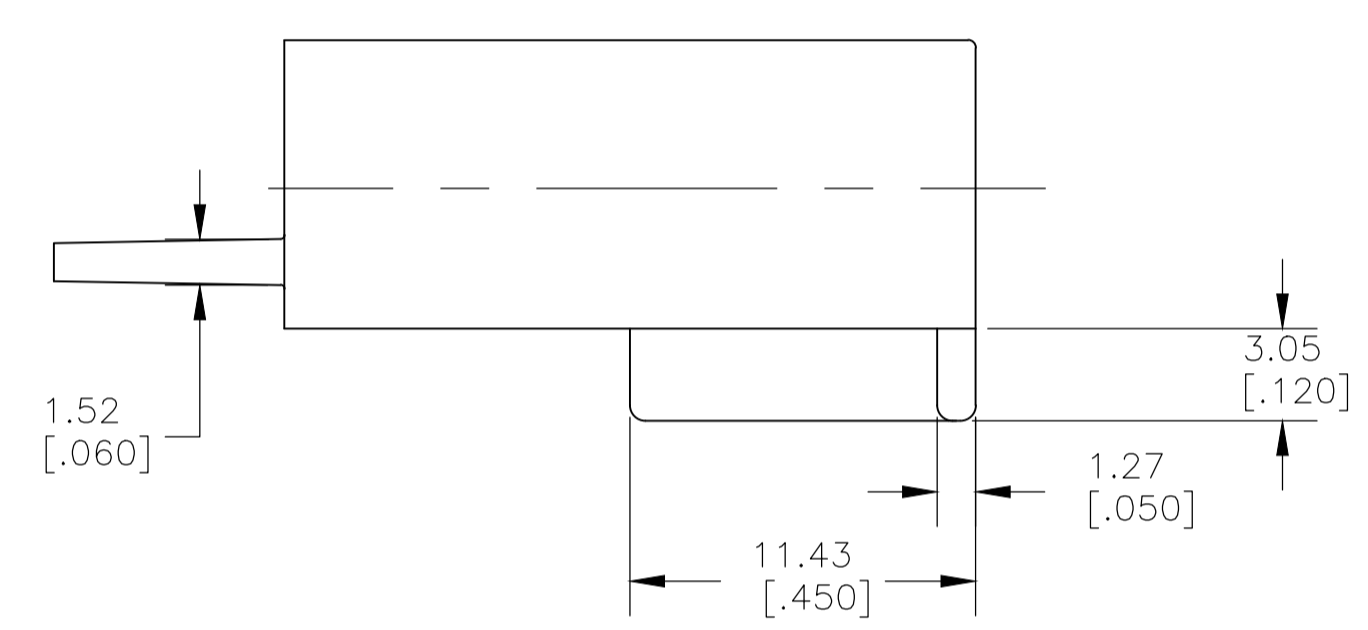


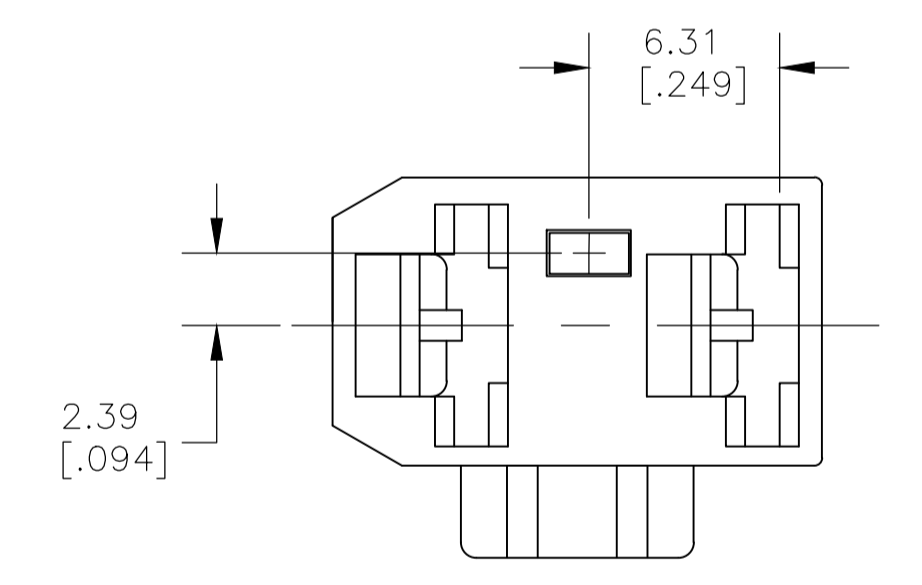
REVISIONS				
P	LTR	DESCRIPTION	DATE	BY
B1		REVISED PER ECR-19-013222	11SEP2019	BDA DS



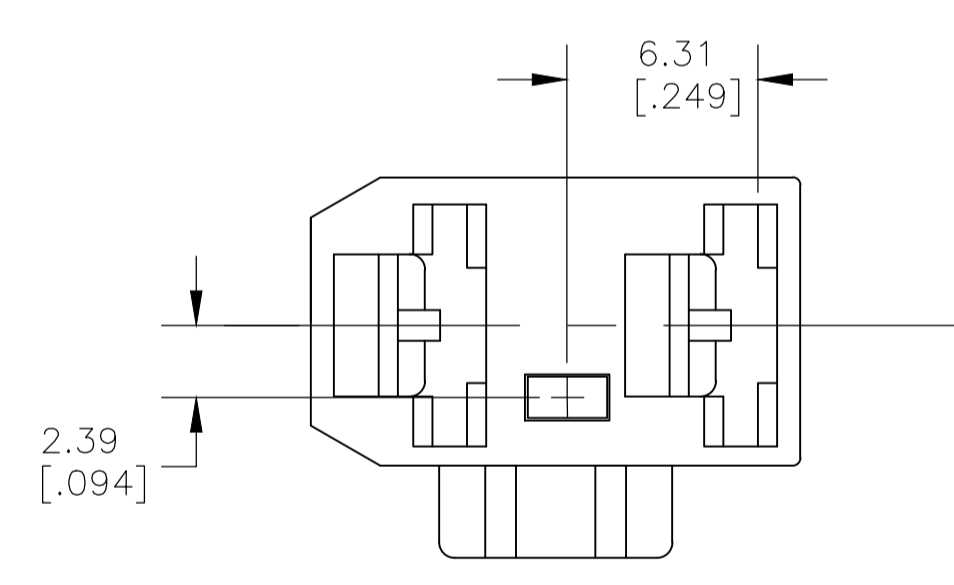
- 1 FITS 6.35 [.250] SERIES FASTON RECEPTACLES.
- 2 PRELIMINARY - NOT FOR PRODUCTION
- 3 OBSOLETE PARTS
- 4 PARTS MAY APPEAR MEDIUM COLORED TO LIGHT COLORED AND EXHIBIT A MARBLING EFFECT.



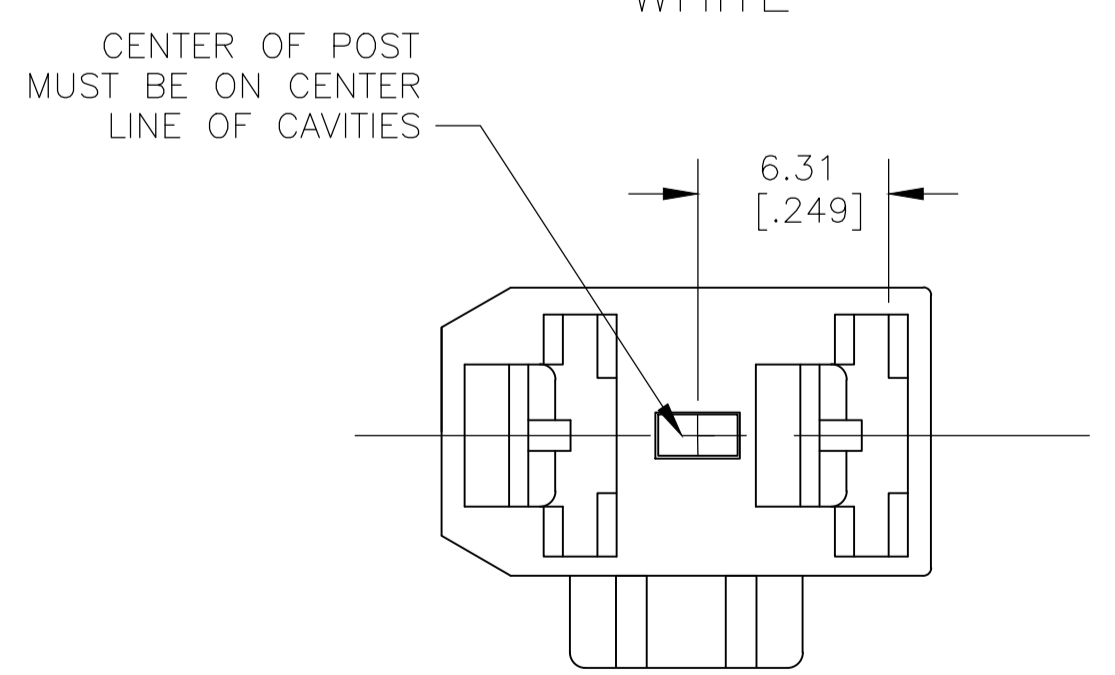
KEYING FOR -1 & -7 PART WHITE



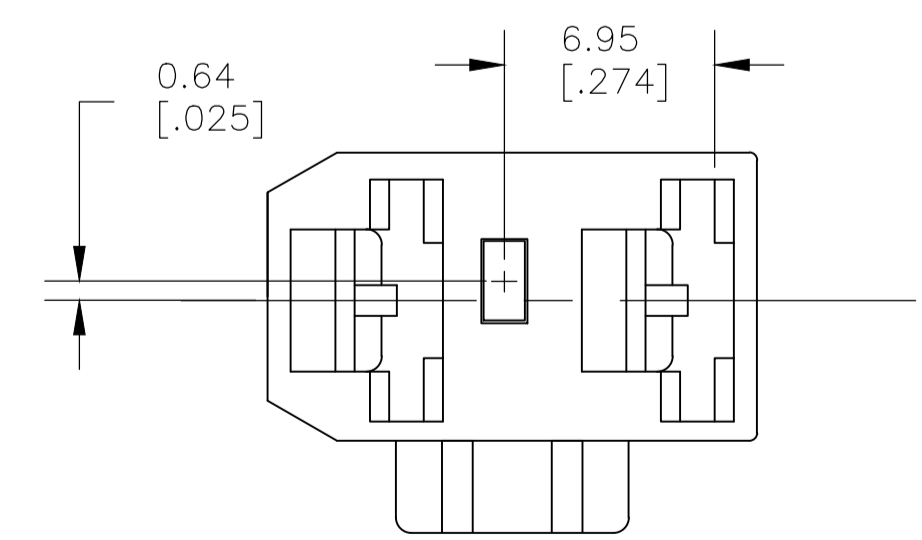
KEYING FOR -3 PART YELLOW



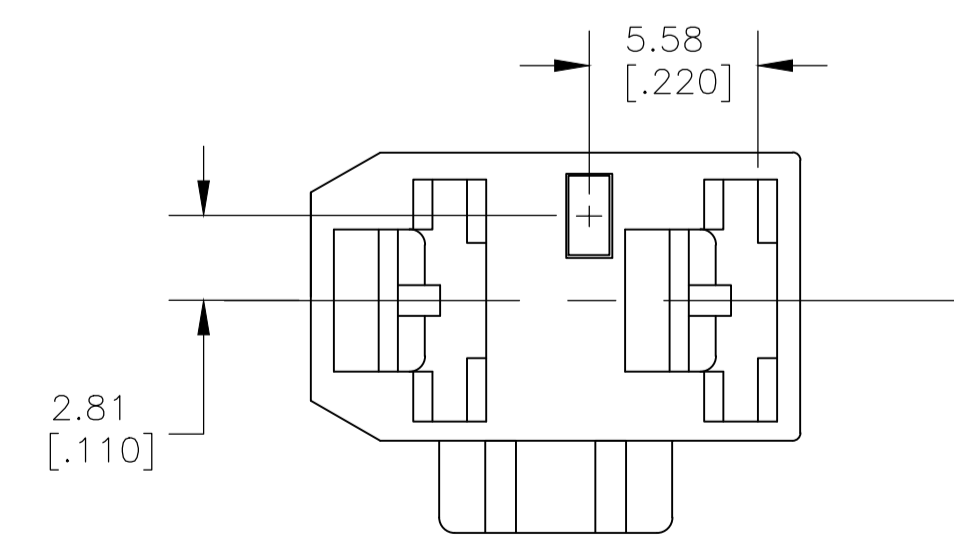
KEYING FOR -5 PART BLUE



KEYING FOR -2 & -8 PART GREEN



KEYING FOR -4 & 1-0 PART BLACK



KEYING FOR -6 PART RED

4	COLOR	MATERIAL	PART NO
	WHITE	66 NYLON WHITE	1-1969141-1
2	BLACK	6/6 NYLON, V2	1-1969141-0
2	GREEN	6/6 NYLON, V2	1969141-8
2	WHITE	6/6 NYLON, V2	1969141-7
2	RED	66, NYLON, V0	1969141-6
2	BLUE	66, NYLON, V0	1969141-5
2	BLACK	66, NYLON, V0	1969141-4
2	YELLOW	66, NYLON, V0	1969141-3
3	GREEN	66, NYLON, V0	1969141-2
	WHITE	66, NYLON, V0	1969141-1

OBSOLETE

SUPERSEDED BY 1-1969141-1

THIS DRAWING IS A CONTROLLED DOCUMENT.

TE Connectivity Ltd.

HOUSING, RECEPTACLE, FASTON, 6.35 [.250] SERIES, 2 CIRCUIT

SIZE: A1 CAGE CODE: 00779 DRAWING NO: 1969141

SCALE: 4:1 SHEET: 1 OF 1 REV: B1