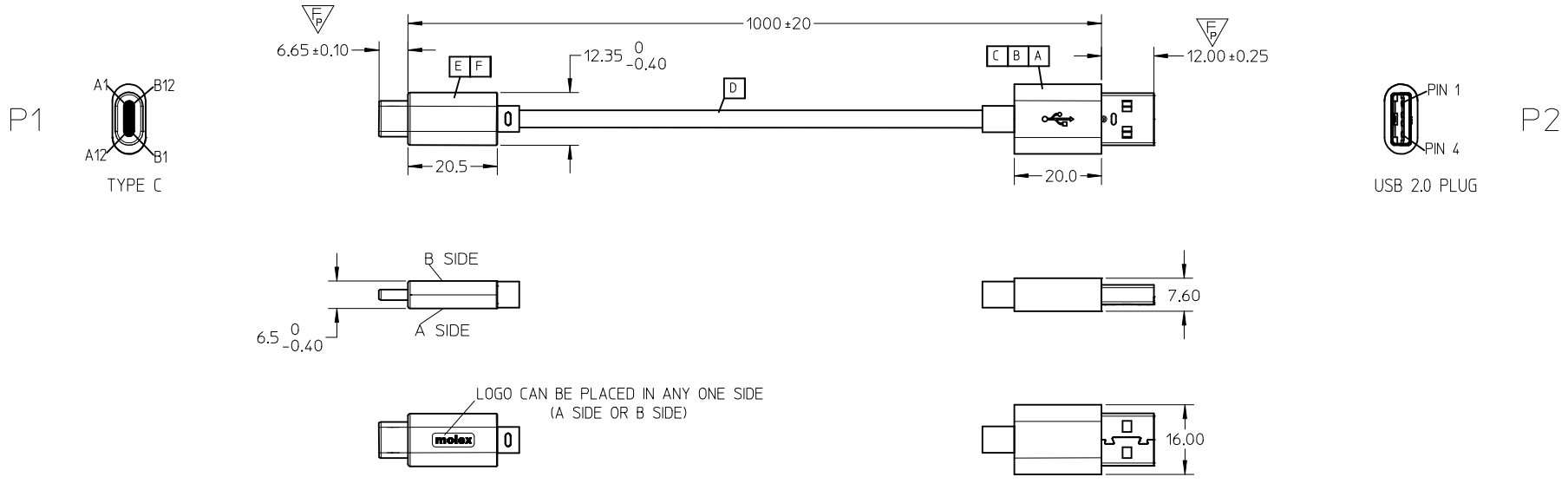


| REVISIONS | | | | |
|-----------|------------|-----|---------------------------------|---------|
| EC NO | DATE | REV | DESCRIPTION | CHANGER |
| CY16-5179 | 2016/03/19 | C | UPDATE FLEXING TEST REQUIREMENT | LUCY |
| CY16-5923 | 2016/07/08 | D | ADD MOLEX LOGO ON OUTER MOLD | LUCY |
| CY16-5857 | 2016/07/21 | E | CHANGE PCBA | LUCY |



| PIN ASSIGNMENTS | | | | |
|-----------------|-------------|------------|---------|-------------|
| Type C | SIGNAL NAME | WIRE COLOR | USB 2.0 | SIGNAL NAME |
| A1,B1,A12,B12 | GND | BLACK | 4 | GND |
| A4,B4,A9,B9 | VBUS | RED | 1 | VBUS |
| A5 | CC | - | - | - |
| B5 | VCONN | - | - | - |
| A6 | Dp1 | GREEN | 3 | D+ |
| A7 | Dn1 | WHITE | 2 | D- |
| SHELL | SHIELD | BRAID | SHELL | SHIELD |

Rp
56Kohm

| | | |
|------|---|------|
| F | extended tube back metal shell | 1 |
| E | Type C plug Au 30u" 22pin+PCBA 2.0 | 1 |
| D | 1PX28+3CX24AWG,SHLD,PVC,BK;4.2MM,UL2725 | AR |
| C | USB2.0, plug, A type,bottom shell | 1 |
| B | USB2.0, plug, A type,top shell(7.9mm) | 1 |
| A | USB2.0, plug, A type plating 30u" | 1 |
| ITEM | DESCRIPTION | QTY. |

| | | | | | | | | |
|---|--|---|---|--|------------------------------|---------------------|------------------------|------------------------|
| ENTER DESCRIPTION EC NO: CPG2017-0113 DRW: XJGU001 CH: KD: LUCY APPR: FNIE 2016/07/22 2016/07/22 2016/07/25 | QUALITY SYMBOLS $\nabla_F = 0$ $\nabla_F = 0$ $\nabla_F = 2$ | GENERAL TOLERANCES (UNLESS SPECIFIED) | | DIMENSION STYLE MM ONLY | | SCALE --- | DESIGN UNITS METRIC | THIRD ANGLE PROJECTION |
| | | 4 PLACES ± --- ± --- 3 PLACES ± --- ± --- 2 PLACES ± 0.25 ± --- 1 PLACE ± 0.5 ± --- 0 PLACE ± --- ± --- | mm INCH DRAWN BY: XJGU001 DATE: 2015/12/04 CHECKED BY: LUCY DATE: 2015/12/04 APPROVED BY: FNIE DATE: 2015/12/04 | TITLE USB TYPE C TO USB 2.0 A MALE L=1M | | | | |
| | | DRAFT WHERE APPLICABLE MUST REMAIN WITHIN DIMENSIONS | | MATERIAL NO. 687980001 | DOCUMENT NO. SD-68798-005 | SHEET NO. 1 OF 2 | | |
| | | THIS DRAWING CONTAINS INFORMATION THAT IS PROPRIETARY TO MOLEX INCORPORATED AND SHOULD NOT BE USED WITHOUT WRITTEN PERMISSION | | | | | | |

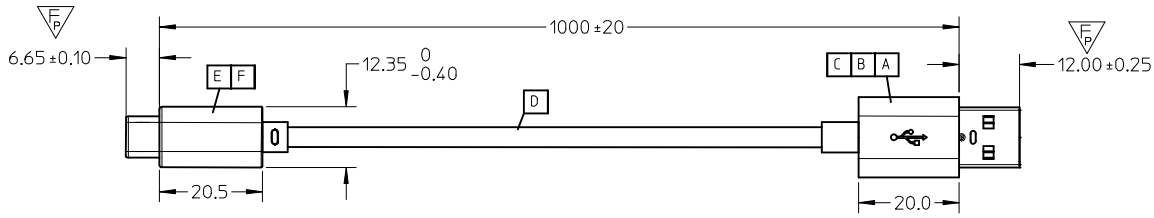
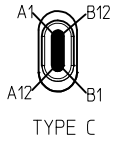
NOTE:

1. OVERMOLDING SPECIFICATION:
 - 1.1 INNER MOLDING: PE RESIN
 - 1.2 OUTER MOLDING: PVC BLACK RESIN
2. APPLICATION CONDITION
 - 2.1 WORKING TEMPERATURE: -10°--- +50°
 - 2.2 STORAGE TEMPERATURE: -20°--- +60°
3. MECHANICAL PERFORMACNE
 - 3.1. CABLE ASSEMBLY CAN PASS FLEXING TEST, PER EIA364-41 CONDITION I WITH DIMENSION X=3.7 TIMES THE CABLE DIAMETER AND 100 CYCLES IN EACH OF TWO PLANES 120 DEGREE ARC.
 - 3.2. CABLE SHOULD WITHSTAND A PULL FORCE 40N FOR ONE MINUTE WITHOUT VISIBLE TERMINATION DAMAGE.PER EIA 364-38 METHOD A
 - 3.3 CABLE SHOULD MEET 3.8.1.6 4-AXIS CONTINUITY TEST OF TYPE C STANDARD FOR P1 SIDE
4. ELECTRICAL PERFORMACNE
 - 4.1 100% OPEN AND SHORT TEST
 - 4.2 OTHER ELECTRICAL PERFORMANCE MEET USB TYPE-C LEGACY CABLE, C - PLUG A, USB 2.0
 - 4.3 CURRENT RATING:3A, VOLTAGE DROP SHALL BE 250mV FOR GND AND 500mV FOR VBUS.
5. THIS PRODUCT MUST MEET Molex QEHS-699000-301
6. PRODUCT SPECIFICATION PS-68798-0003

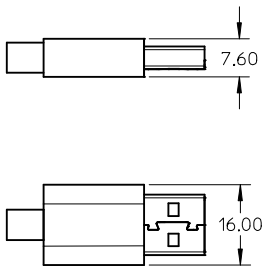
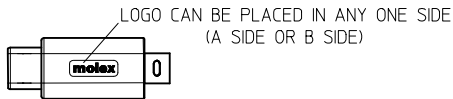
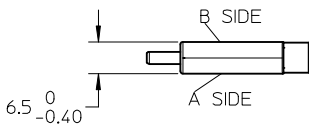
| | | | | | | | | | | |
|---|---|---------------------------------------|--|-----------------------------------|---|--------------------|--|------------------------|--|--|
| ENTER DESCRIPTION EC NO: CPG2017-0113 DRWN:XJGU001 2016/07/22 CHKD:LUCY 2016/07/22 APPR:FNIE 2016/07/25 | QUALITY SYMBOLS $\nabla_A=0$ $\nabla_G=0$ $\nabla_P=0$ | GENERAL TOLERANCES (UNLESS SPECIFIED) | | DIMENSION STYLE MM ONLY | | SCALE --- | DESIGN UNITS METRIC | THIRD ANGLE PROJECTION | | |
| | | | mm | INCH | DRAWN BY XJGU001 | DATE 2015/12/04 | TITLE USB TYPE C TO USB 2.0 A MALE L=1M | | | |
| | | 4 PLACES | ± --- | ± --- | CHECKED BY LUCY | DATE 2015/12/04 | | | | |
| | | | | | APPROVED BY FNIE | DATE 2015/12/04 | molex DOCUMENT NO. SD-68798-005 SHEET NO. 2 OF 2 | | | |
| 3 PLACES | ± --- | ± --- | MATERIAL NO. 687980001 | | | | | | | |
| 2 PLACES | ± 0.25 | ± --- | DRAFT WHERE APPLICABLE MUST REMAIN WITHIN DIMENSIONS | | THIS DRAWING CONTAINS INFORMATION THAT IS PROPRIETARY TO MOLEX INCORPORATED AND SHOULD NOT BE USED WITHOUT WRITTEN PERMISSION | | | | | |
| 1 PLACE | ± 0.5 | ± --- | | | | | | | | |
| 0 PLACE | ± --- | ± --- | | | | | | | | |
| | | ANGULAR ± ---° | | | | | | | | |

| REVISIONS | | | | |
|-----------|------------|-----|---------------------------------|---------|
| EC NO | DATE | REV | DESCRIPTION | CHANGER |
| CY16-5179 | 2016/03/19 | C | UPDATE FLEXING TEST REQUIREMENT | LUCY |
| CY16-5923 | 2016/07/08 | D | ADD MOLEX LOGO ON OUTER MOLD | LUCY |
| CY16-5857 | 2016/07/21 | E | CHANGE PCBA | LUCY |

P1



P2



| PIN ASSIGNMENTS | | | | |
|-----------------|-------------|------------|---------|-------------|
| Type C | SIGNAL NAME | WIRE COLOR | USB 2.0 | SIGNAL NAME |
| A1,B1,A12,B12 | GND | BLACK | 4 | GND |
| A4,B4,A9,B9 | VBUS | RED | 1 | VBUS |
| A5 | CC | - | - | - |
| B5 | VCONN | - | - | - |
| A6 | Dp1 | GREEN | 3 | D+ |
| A7 | Dn1 | WHITE | 2 | D- |
| SHELL | SHIELD | BRAID | SHELL | SHIELD |



| | | |
|------|---|------|
| F | extended tube back metal shell | 1 |
| E | Type C plug Au 30u" 22pin+PCBA 2.0 | 1 |
| D | 1PX28+3CX24AWG,SHLD,PVC,BK;4.2MM,UL2725 | AR |
| C | USB2.0, plug, A type,bottom shell | 1 |
| B | USB2.0, plug, A type,top shell(7.9mm) | 1 |
| A | USB2.0, plug, A type plating 30u" | 1 |
| ITEM | DESCRIPTION | QTY. |

| | | | | | | | | |
|--|--------------------------------------|---|--|--|------------------------------|---------------------|------------------------|------------------------|
| ENTER DESCRIPTION EC NO: CPG2017-0113 DRW:NXJG001 CH'KD:LUCY APPR:FNIE 2016/07/22 2016/07/22 2016/07/25 | QUALITY SYMBOLS F=0 F=0 F=2 | GENERAL TOLERANCES (UNLESS SPECIFIED) | | DIMENSION STYLE MM ONLY | | SCALE --- | DESIGN UNITS METRIC | THIRD ANGLE PROJECTION |
| | | 4 PLACES ± --- ± --- 3 PLACES ± --- ± --- 2 PLACES ± 0.25 ± --- 1 PLACE ± 0.5 ± --- 0 PLACE ± --- ± --- | mm INCH DRAWN BY XJGU01 DATE 2015/12/04 CHECKED BY LUCY DATE 2015/12/04 APPROVED BY FNIE DATE 2015/12/04 | TITLE USB TYPE C TO USB 2.0 A MALE L=1M | | | | |
| | | ANGULAR ± --- ° DRAFT WHERE APPLICABLE MUST REMAIN WITHIN DIMENSIONS | | MATERIAL NO. 687980001 | DOCUMENT NO. SD-68798-005 | SHEET NO. 1 OF 2 | | |
| | | THIS DRAWING CONTAINS INFORMATION THAT IS PROPRIETARY TO MOLEX INCORPORATED AND SHOULD NOT BE USED WITHOUT WRITTEN PERMISSION | | | | | | |



NOTE:

1. OVERMOLDING SPECIFICATION:
 - 1.1 INNER MOLDING: PE RESIN
 - 1.2 OUTER MOLDING: PVC BLACK RESIN
2. APPLICATION CONDITION
 - 2.1 WORKING TEMPERATURE: -10°--- +50°
 - 2.2 STORAGE TEMPERATURE: -20°--- +60°
3. MECHANICAL PERFORMACNE
 - 3.1. CABLE ASSEMBLY CAN PASS FLEXING TEST, PER EIA364-41 CONDITION I WITH DIMENSION X=3.7 TIMES THE CABLE DIAMETER AND 100 CYCLES IN EACH OF TWO PLANES 120 DEGREE ARC.
 - 3.2. CABLE SHOULD WITHSTAND A PULL FORCE 40N FOR ONE MINUTE WITHOUT VISIBLE TERMINATION DAMAGE.PER EIA 364-38 METHOD A
 - 3.3 CABLE SHOULD MEET 3.8.1.6 4-AXIS CONTINUITY TEST OF TYPE C STANDARD FOR P1 SIDE
4. ELECTRICAL PERFORMACNE
 - 4.1 100% OPEN AND SHORT TEST
 - 4.2 OTHER ELECTRICAL PERFORMANCE MEET USB TYPE-C LEGACY CABLE, C - PLUG A, USB 2.0
 - 4.3 CURRENT RATING:3A, VOLTAGE DROP SHALL BE 250mV FOR GND AND 500mV FOR VBUS.
5. THIS PRODUCT MUST MEET Molex QEHS-699000-301
6. PRODUCT SPECIFICATION PS-68798-0003

| | | | | | | | | | | |
|---|--|---------------------------------------|----------------------------------|-----------------------------------|---|--|---|------------------------|--|--|
| ENTER DESCRIPTION EC NO: CPG2017-0113 DRWN:XJGU001 2016/07/22 CHKD:LUCY 2016/07/22 APPR:FNIE 2016/07/25 | QUALITY SYMBOLS | GENERAL TOLERANCES (UNLESS SPECIFIED) | | DIMENSION STYLE MM ONLY | | SCALE --- | DESIGN UNITS METRIC | THIRD ANGLE PROJECTION | | |
| | $\nabla_A=0$ $\nabla_G=0$ $\nabla_P=0$ | | mm | INCH | DRAWN BY | DATE | TITLE USB TYPE C TO USB 2.0 A MALE L=1M | | | |
| | | 4 PLACES | ± --- | ± --- | XJGU001 | 2015/12/04 | | | | |
| | | 3 PLACES | ± --- | ± --- | CHECKED BY | DATE | | | | |
| | | 2 PLACES | ± 0.25 | ± --- | LUCY | 2015/12/04 | | | | |
| | 1 PLACE | ± 0.5 | ± --- | APPROVED BY | DATE | molex DOCUMENT NO. SD-68798-005 SHEET NO. 2 OF 2 | | | | |
| | 0 PLACE | ± --- | ± --- | FNIE | 2015/12/04 | | | | | |
| | ANGULAR ± ---° | | MATERIAL NO. 687980001 | | | | | | | |
| | DRAFT WHERE APPLICABLE MUST REMAIN WITHIN DIMENSIONS | | SIZE A3 | | THIS DRAWING CONTAINS INFORMATION THAT IS PROPRIETARY TO MOLEX INCORPORATED AND SHOULD NOT BE USED WITHOUT WRITTEN PERMISSION | | | | | |