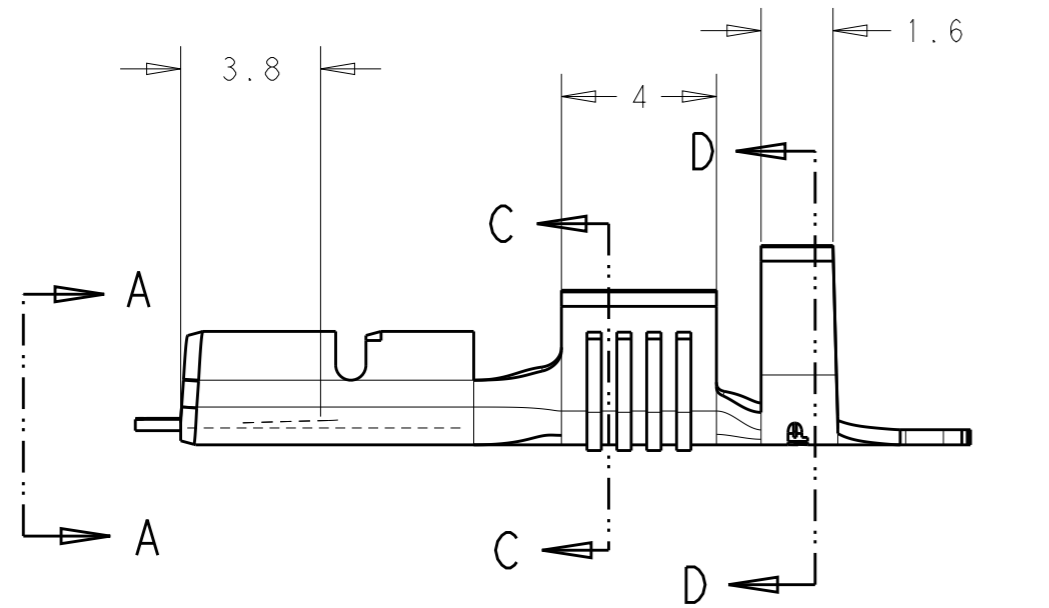
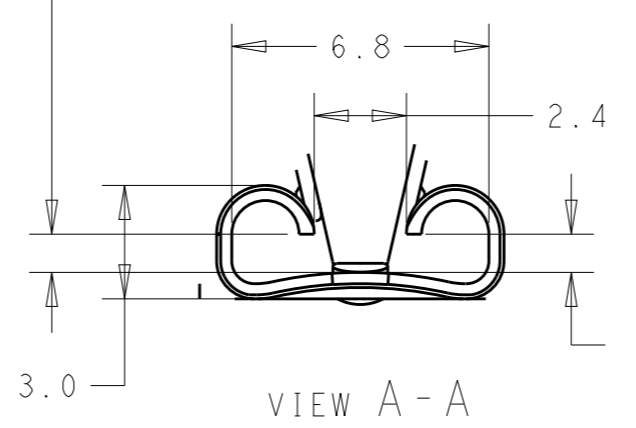


THIS DRAWING IS UNPUBLISHED. RELEASED FOR PUBLICATION
 © COPYRIGHT copyright_dBTe- ALL RIGHTS RESERVED.

REVISIONS					
P	LTR	DESCRIPTION	DATE	DWN	APVD
	H3	REDRAWN PER ECR-16-010131	13JUL2016	NK	PKS
	U	ECR-18-006177	16MAY2018	GG	TD
	U1	REVISED PER ECR-20-009164	14AUG2020	MK	DH

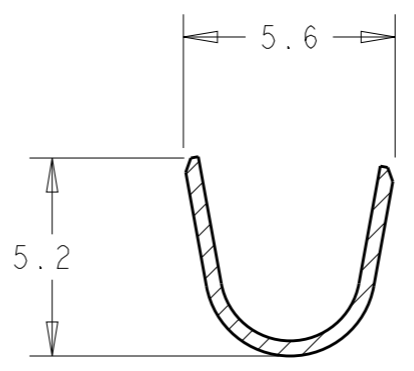


GAP AS REQUIRED TO MEET FORCE SPECIFICATIONS AND 0.71 MAX

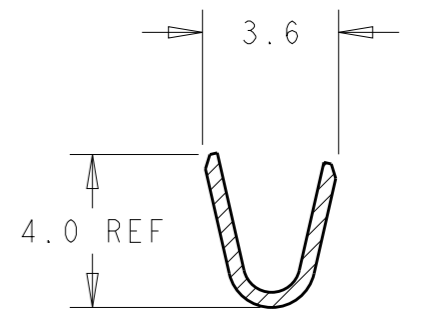


- 1 OBSOLETE PARTS: OBSOLETE CIS STREAMLINING PER D.RENAUD/D.SINISI.
- 2 MATING TAB THK. IS 0.84-0.76

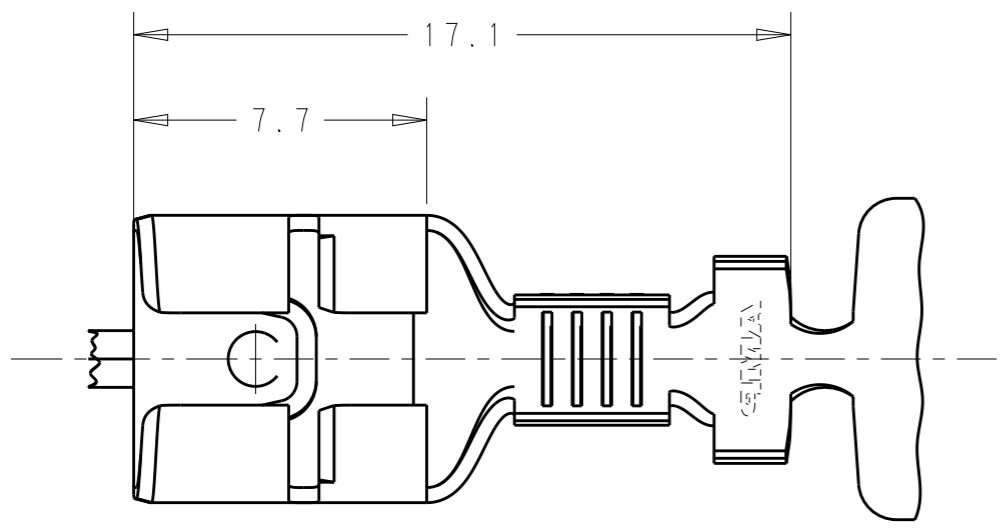
FOR THICK WITH TONGUE OF 0.8MM HOLE



SECTION D-D



SECTION C-C



GENERAL TOLERANCE: ±0.4

1	OBSOLETE	NICKEL	STEEL	737440-5
	OBSOLETE	-	BRONZE	737440-4
	OBSOLETE	ARE PRE	LATON	737440-3
		ESTANADO	LATON	737440-2
		-	LATON	737440-1
		FINISH	MATERIAL	PART NO.

WIRE RANGE: 1.0-2.5 MM² INS. RANGE: 03.0-4.3MM

THIS DRAWING IS A CONTROLLED DOCUMENT.		DWN 13JUL2016 NAGALAKSHMI K	TE Connectivity	
DIMENSIONS: mm		CHK 13JUL2016 KRISHNAN P U PRASANTH		
TOLERANCES UNLESS OTHERWISE SPECIFIED:		APVD 13JUL2016 KRISHNAN P U PRASANTH	NAME RECEPTACULO FASTON 6,35	
0 PLC ±-		PRODUCT SPEC	SIZE CAGE CODE DRAWING NO RESTRICTED TO	
1 PLC ±-		APPLICATION SPEC	A3 00779 C=737440	
2 PLC ±-		WEIGHT	SCALE 5:1 SHEET 1 OF 1 REV U1	
3 PLC ±-		CUSTOMER DRAWING		
4 PLC ±-				
ANGLES ±-				
FINISH				
MATERIAL				