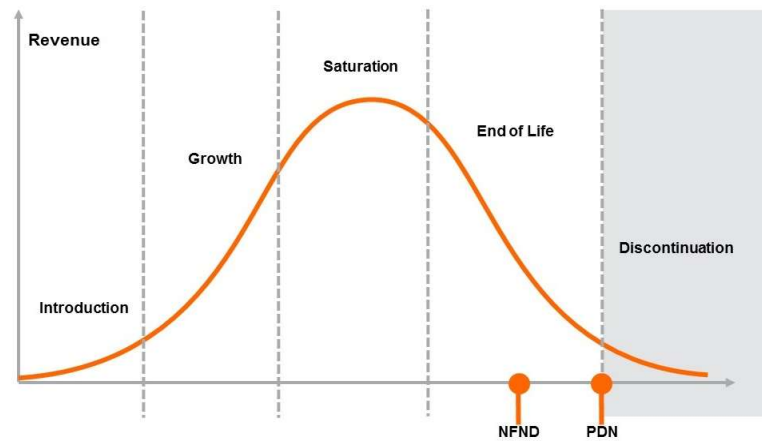


Product Or Individual Q-Code Discontinuation (acc. JEDEC J-STD-048)
OS-PDN-2020-044

01 July 2020

Last order: 01 January 2021

Last delivery: 01 July 2021



Please direct your feedback to your local Sales office.

DISCONTINUED				NEW (REPLACEMENT)		
Device	Ordering Code	Brand	Reason for discontinuation	Device	Datasheet Ordering Code	Brand
GW QSLR31.PM-L1L4-XX55-1-150-R18	Q65112A9942	Osconiq S 3030	Brightness increase – dim selections need to be phased-out	GW QSLR31.PM-L2MW-XX55-1-150-R18	Q65113A1439	Osconiq S 3030
GW QSLR31.PM-LYL1-XX55-1-150-R18	Q65112A6931	Osconiq S 3030	Brightness increase – dim selections need to be phased-out	GW QSLR31.PM-L2MW-XX55-1-150-R18	Q65113A1439	Osconiq S 3030
GW QSLR31.PM-LZL2-XX55-1-150-R18	Q65112A7050	Osconiq S 3030	Brightness increase – dim selections need to be phased-out	GW QSLR31.PM-L2MW-XX55-1-150-R18	Q65113A1439	Osconiq S 3030
GW QSLR31.PM-LXLZ-XX57-1-150-R18	Q65112A6933	Osconiq S 3030	Brightness increase – dim selections need to be phased-out	GW QSLR31.PM-LZL5-XX57-1-150-R18	Q65113A1440	Osconiq S 3030
GW QSLR31.PM-LYL1-XX57-1-150-R18	Q65112A7276	Osconiq S 3030	Brightness increase – dim selections need to be phased-out	GW QSLR31.PM-LZL5-XX57-1-150-R18	Q65113A1440	Osconiq S 3030
GW QSLR31.PM-LXLZ-XX56-1-150-R18	Q65112A6934	Osconiq S 3030	Brightness increase – dim selections need to be phased-out	GW QSLR31.PM-L1MV-XX56-1-150-R18	Q65113A1441	Osconiq S 3030
GW QSLR31.PM-LYL1-XX56-1-150-R18	Q65112A7277	Osconiq S 3030	Brightness increase – dim selections need to be phased-out	GW QSLR31.PM-L1MV-XX56-1-150-R18	Q65113A1441	Osconiq S 3030
GW QSLR31.PM-LZL3-XX56-1-150-R18	Q65112A9941	Osconiq S 3030	Brightness increase – dim selections need to be phased-out	GW QSLR31.PM-L1MV-XX56-1-150-R18	Q65113A1441	Osconiq S 3030
GW QSLR31.PM-LYL1-XX53-1-150-R18	Q65112A6932	Osconiq S 3030	Brightness increase – dim selections need to be phased-out	GW QSLR31.PM-L2MW-XX53-1-150-R18	Q65113A1442	Osconiq S 3030
GW QSLR31.PM-LZL2-XX53-1-150-R18	Q65112A7033	Osconiq S 3030	Brightness increase – dim selections need to be phased-out	GW QSLR31.PM-L2MW-XX53-1-150-R18	Q65113A1442	Osconiq S 3030
GW QSLR31.PM-LXLZ-XX52-1-150-R18	Q65112A6935	Osconiq S 3030	Brightness increase – dim selections need to be phased-out	GW QSLR31.PM-L1MV-XX52-1-150-R18	Q65113A1443	Osconiq S 3030
GW QSLR31.PM-LYL1-XX52-1-150-R18	Q65112A7275	Osconiq S 3030	Brightness increase – dim selections need to be phased-out	GW QSLR31.PM-L1MV-XX52-1-150-R18	Q65113A1443	Osconiq S 3030
GW QSLR31.PM-LZL3-XX52-1-150-R18	Q65112A9943	Osconiq S 3030	Brightness increase – dim selections need to be phased-out	GW QSLR31.PM-L1MV-XX52-1-150-R18	Q65113A1443	Osconiq S 3030
GW QSLR31.PM-LXLZ-XX51-1-150-R18	Q65112A6936	Osconiq S 3030	Brightness increase – dim selections need to be phased-out	GW QSLR31.PM-L1MV-XX51-1-150-R18	Q65113A1444	Osconiq S 3030
GW QSLR31.PM-LYL1-XX51-1-150-R18	Q65112A7453	Osconiq S 3030	Brightness increase – dim selections need to be phased-out	GW QSLR31.PM-L1MV-XX51-1-150-R18	Q65113A1444	Osconiq S 3030
GW QSLM31.EM-H4H8-XX55-1-65-R18	Q65112A7191	Osconiq S 3030	Brightness increase – dim selections need to be phased-out	GW QSLM31.EM-H6HW-XX55-1-65-R18	Q65113A1445	Osconiq S 3030
GW QSLM31.EM-H5H9-XX53-1-65-R18	Q65112A7190	Osconiq S 3030	Brightness increase – dim selections need to be phased-out	GW QSLM31.EM-H6HW-XX53-1-65-R18	Q65113A1446	Osconiq S 3030
GW QSLM31.EM-H4H8-XX56-1-65-R18	Q65112A7192	Osconiq S 3030	Brightness increase – dim selections need to be phased-out	GW QSLM31.EM-H5HV-XX56-1-65-R18	Q65113A1447	Osconiq S 3030
GW QSLM31.EM-H4H8-XX52-1-65-R18	Q65112A7189	Osconiq S 3030	Brightness increase – dim selections need to be phased-out	GW QSLM31.EM-H5HV-XX52-1-65-R18	Q65113A1448	Osconiq S 3030
GW QSLM31.EM-H4H8-XX51-1-65-R18	Q65112A7188	Osconiq S 3030	Brightness increase – dim selections need to be phased-out	GW QSLM31.EM-H5HV-XX51-1-65-R18	Q65113A1449	Osconiq S 3030
GW QSLM31.EM-H3H7-XX57-1-65-R18	Q65112A7186	Osconiq S 3030	Brightness increase – dim selections need to be phased-out	GW QSLM31.EM-H4H9-XX57-1-65-R18	Q65113A1450	Osconiq S 3030
GW QSLM31.EM-H2H4-XX58-1-65-R18	Q65112A7187	Osconiq S 3030	Brightness increase – dim selections need to be phased-out	GW QSLM31.EM-H3H8-XX58-1-65-R18	Q65113A1451	Osconiq S 3030
GW QSLR31.EM-LVLX-XX51-1-150-R18	Q65112A7366	Osconiq S 3030	Brightness increase – dim selections need to be phased-out	GW QSLR31.EM-LXL3-XX51-1-150-R18	Q65113A1459	Osconiq S 3030
GW QSLR31.EM-LWLY-XX51-1-150-R18	Q65112A6911	Osconiq S 3030	Brightness increase – dim selections need to be phased-out	GW QSLR31.EM-LXL3-XX51-1-150-R18	Q65113A1459	Osconiq S 3030
GW QSLM31.QM-GVH8-XX51-1-65-R18	Q65112A9426	Osconiq S 3030	Brightness increase – dim selections need to be phased-out	GW QSLM31.QM-H2H7-XX51-1-65-R18	Q65113A1460	Osconiq S 3030
GW QSLM31.QM-H1HV-XX52-1-65-R18	Q65112A9427	Osconiq S 3030	Brightness increase – dim selections need to be phased-out	GW QSLM31.QM-H2H7-XX52-1-65-R18	Q65113A1461	Osconiq S 3030
GW QSLM31.QM-H1HV-XX53-1-65-R18	Q65112A9428	Osconiq S 3030	Brightness increase – dim selections need to be phased-out	GW QSLM31.QM-H3H8-XX53-1-65-R18	Q65113A1462	Osconiq S 3030
GW QSLM31.QM-H1HV-XX55-1-65-R18	Q65112A8245	Osconiq S 3030	Brightness increase – dim selections need to be phased-out	GW QSLM31.QM-H3H8-XX55-1-65-R18	Q65113A1463	Osconiq S 3030
GW QSLM31.QM-H1HV-XX56-1-65-R18	Q65112A8244	Osconiq S 3030	Brightness increase – dim selections need to be phased-out	GW QSLM31.QM-H2H7-XX56-1-65-R18	Q65113A1464	Osconiq S 3030
GW QSLM31.QM-H1HV-XX57-1-65-R18	Q65112A8243	Osconiq S 3030	Brightness increase – dim selections need to be phased-out	GW QSLM31.QM-H1H6-XX57-1-65-R18	Q65113A1465	Osconiq S 3030
GW QSLM31.QM-GVH8-XX58-1-65-R18	Q65112A8246	Osconiq S 3030	Brightness increase – dim selections need to be phased-out	GW QSLM31.QM-GWH5-XX58-1-65-R18	Q65113A1466	Osconiq S 3030
GW QSLM31.QM-G7H5-XX510-1-65-R18	Q65112A9425	Osconiq S 3030	Brightness increase – dim selections need to be phased-out	GW QSLM31.QM-G8H2-XX510-1-65-R18	Q65113A1467	Osconiq S 3030

Products Affected by Product Discontinuation Notification

Number: OS-PDN-2020-044

Name: Product Discontinuation : Dim selection phase out

Release Date: 6/30/2020

Last Order: 1/1/2021

Last Delivery: 7/1/2021

DISCONTINUED

NEW (REPLACEMENT)

Product	QNumber	QNumber Description	Part Number	Product	QNumber	QNumber Description	Part Number
GW QSLM31	Q65112A7186	GW QSLM31.EM-H3H7-XX57-1-65-R18		GW QSLM31	Q65113A1450	GW QSLM31.EM-H4H9-XX57-1-65-R18	
GW QSLM31	Q65112A7187	GW QSLM31.EM-H2H4-XX58-1-65-R18		GW QSLM31	Q65113A1451	GW QSLM31.EM-H3H8-XX58-1-65-R18	
GW QSLM31	Q65112A7188	GW QSLM31.EM-H4H8-XX51-1-65-R18		GW QSLM31	Q65113A1449	GW QSLM31.EM-H5HV-XX51-1-65-R18	
GW QSLM31	Q65112A7189	GW QSLM31.EM-H4H8-XX52-1-65-R18		GW QSLM31	Q65113A1448	GW QSLM31.EM-H5HV-XX52-1-65-R18	
GW QSLM31	Q65112A7190	GW QSLM31.EM-H5H9-XX53-1-65-R18		GW QSLM31	Q65113A1446	GW QSLM31.EM-H6HW-XX53-1-65-R18	
GW QSLM31	Q65112A7191	GW QSLM31.EM-H4H8-XX55-1-65-R18		GW QSLM31	Q65113A1445	GW QSLM31.EM-H6HW-XX55-1-65-R18	
GW QSLM31	Q65112A7192	GW QSLM31.EM-H4H8-XX56-1-65-R18		GW QSLM31	Q65113A1447	GW QSLM31.EM-H5HV-XX56-1-65-R18	
GW QSLM31	Q65112A8243	GW QSLM31.QM-H1HV-XX57-1-65-R18		GW QSLM31	Q65113A1465	GW QSLM31.QM-H1H6-XX57-1-65-R18	
GW QSLM31	Q65112A8244	GW QSLM31.QM-H1HV-XX56-1-65-R18		GW QSLM31	Q65113A1464	GW QSLM31.QM-H2H7-XX56-1-65-R18	
GW QSLM31	Q65112A8245	GW QSLM31.QM-H1HV-XX55-1-65-R18		GW QSLM31	Q65113A1463	GW QSLM31.QM-H3H8-XX55-1-65-R18	
GW QSLM31	Q65112A8246	GW QSLM31.QM-GVH8-XX58-1-65-R18		GW QSLM31	Q65113A1466	GW QSLM31.QM-GWH5-XX58-1-65-R18	
GW QSLM31	Q65112A9425	GW QSLM31.QM-G7H5-XX510-1-65-R18		GW QSLM31	Q65113A1467	GW QSLM31.QM-G8H2-XX510-1-65-R18	
GW QSLM31	Q65112A9426	GW QSLM31.QM-GVH8-XX51-1-65-R18		GW QSLM31	Q65113A1460	GW QSLM31.QM-H2H7-XX51-1-65-R18	
GW QSLM31	Q65112A9427	GW QSLM31.QM-H1HV-XX52-1-65-R18		GW QSLM31	Q65113A1461	GW QSLM31.QM-H2H7-XX52-1-65-R18	
GW QSLM31	Q65112A9428	GW QSLM31.QM-H1HV-XX53-1-65-R18		GW QSLM31	Q65113A1462	GW QSLM31.QM-H3H8-XX53-1-65-R18	
GW QSLR31	Q65112A6911	GW QSLR31.EM-LWLX-XX51-1-150-R18		GW QSLR31	Q65113A1459	GW QSLR31.EM-LXL3-XX51-1-150-R18	
GW QSLR31	Q65112A7366	GW QSLR31.EM-LVLX-XX51-1-150-R18		GW QSLR31	Q65113A1459	GW QSLR31.EM-LXL3-XX51-1-150-R18	
GW QSLR31	Q65112A6931	GW QSLR31.PM-LYL1-XX55-1-150-R18		GW QSLR31	Q65113A1439	GW QSLR31.PM-L2MW-XX55-1-150-R18	
GW QSLR31	Q65112A6932	GW QSLR31.PM-LYL1-XX53-1-150-R18		GW QSLR31	Q65113A1442	GW QSLR31.PM-L2MW-XX53-1-150-R18	
GW QSLR31	Q65112A6933	GW QSLR31.PM-LXLZ-XX57-1-150-R18		GW QSLR31	Q65113A1440	GW QSLR31.PM-LZL5-XX57-1-150-R18	
GW QSLR31	Q65112A6934	GW QSLR31.PM-LXLZ-XX56-1-150-R18		GW QSLR31	Q65113A1441	GW QSLR31.PM-L1MV-XX56-1-150-R18	
GW QSLR31	Q65112A6935	GW QSLR31.PM-LXLZ-XX52-1-150-R18		GW QSLR31	Q65113A1443	GW QSLR31.PM-L1MV-XX52-1-150-R18	
GW QSLR31	Q65112A6936	GW QSLR31.PM-LXLZ-XX51-1-150-R18		GW QSLR31	Q65113A1444	GW QSLR31.PM-L1MV-XX51-1-150-R18	
GW QSLR31	Q65112A7033	GW QSLR31.PM-LZL2-XX53-1-150-R18		GW QSLR31	Q65113A1442	GW QSLR31.PM-L2MW-XX53-1-150-R18	
GW QSLR31	Q65112A7050	GW QSLR31.PM-LZL2-XX55-1-150-R18		GW QSLR31	Q65113A1439	GW QSLR31.PM-L2MW-XX55-1-150-R18	
GW QSLR31	Q65112A7275	GW QSLR31.PM-LYL1-XX52-1-150-R18		GW QSLR31	Q65113A1443	GW QSLR31.PM-L1MV-XX52-1-150-R18	
GW QSLR31	Q65112A7276	GW QSLR31.PM-LYL1-XX57-1-150-R18		GW QSLR31	Q65113A1440	GW QSLR31.PM-LZL5-XX57-1-150-R18	
GW QSLR31	Q65112A7277	GW QSLR31.PM-LYL1-XX56-1-150-R18		GW QSLR31	Q65113A1441	GW QSLR31.PM-L1MV-XX56-1-150-R18	
GW QSLR31	Q65112A7453	GW QSLR31.PM-LYL1-XX51-1-150-R18		GW QSLR31	Q65113A1444	GW QSLR31.PM-L1MV-XX51-1-150-R18	
GW QSLR31	Q65112A9941	GW QSLR31.PM-LZL3-XX56-1-150-R18		GW QSLR31	Q65113A1441	GW QSLR31.PM-L1MV-XX56-1-150-R18	
GW QSLR31	Q65112A9942	GW QSLR31.PM-L1L4-XX55-1-150-R18		GW QSLR31	Q65113A1439	GW QSLR31.PM-L2MW-XX55-1-150-R18	
GW QSLR31	Q65112A9943	GW QSLR31.PM-LZL3-XX52-1-150-R18		GW QSLR31	Q65113A1443	GW QSLR31.PM-L1MV-XX52-1-150-R18	