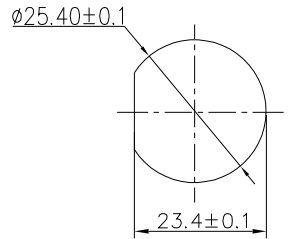
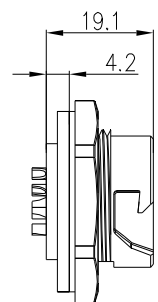


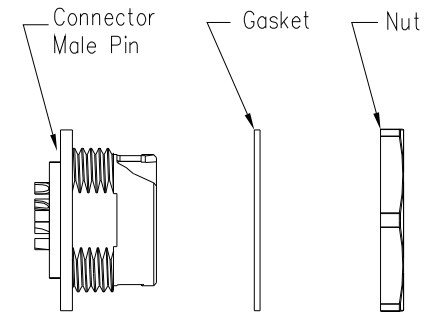
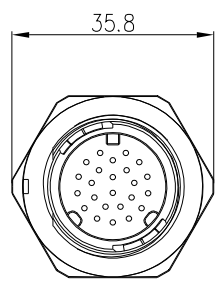
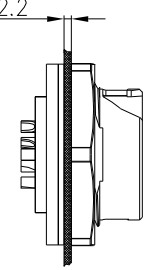
REV.	ECN NO.	DESCRIPTION	SIGN	DATE
C1	N/A	INITIAL DRAWING	Liu	2020/05/12



RECOMMENDED PANEL Cut-Out



Panel T: Max 2.2



Specification:

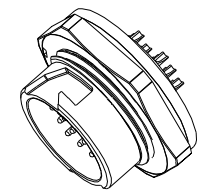
- 1.Operation Temperature: -45°C~105°C.
- 2.Insulation Resistance:100MΩ at DC500V.
- 3.Contact Resistance:<10mΩ.
- 4.Withstand Voltage: 1500V AC
- 5.Operating Current:5A
- 6.Operating Voltage: AC 125V
- 7.Waterproof Rate:IP67 (Mated)
- 8.Housing:Nylon, Black
- 9.Male Pin:Copper Alloy, Gold Plated
- 10.Gasket:Silicon Gray
- 11.Panel Nut:Nylon, Orange
- 12.Torque Rate:0.8~1.0N·m
- 13.RoHS Compliant.
- 14.Mating Cap P/N:806-00058-00

22XXX535-01

Pin Number

9 Pin	18 Pin	24 Pin
P/N: 24009535-01	P/N: 24018535-01	P/N: 24024535-01

Pin Assignments Front View



**CHOGORI**

UNIT:mm	DESCRIPTION Large Series Push Lock Female socket With Male Pin	PART NO 24XXX535-01	DRAWN BY Liu	DATE 2020/05/12
TOLERANCE .X ±0.25 .XX ±0.15 .XXX ±0.05 ANGLES ±1°	SCALE: 1:1 SHEET 1 OF 1	DWG NO	CHECKED BY Mo	DATE 2020/05/12
REV. C1	SIZE A4 * :Inspection Item	CUSTOMER	APPROVED BY Adley	DATE 2020/05/12

THIS INFORMATION IS CONFIDENTIAL AND IS DISCLOSED TO YOU ON CONDITION THAT NO FURTHER DISCLOSURE IS MADE BY YOU TO OTHER THAN CHOGORI PERSONNEL WITHOUT AUTHORIZATION FROM CHOGORI CORP.