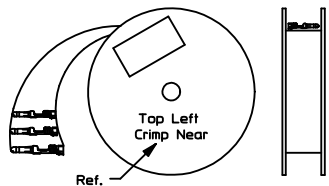
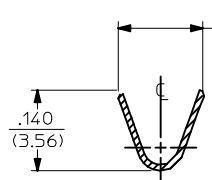
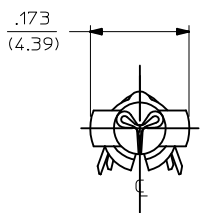


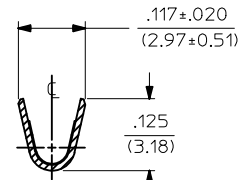
PART NO.	ENG. NO.
02-09-2118	1380-(P901)L
02-09-2116	1380-(P901)
02-09-2127	1380-(P901)1
02-09-6126	1380-(591)L
02-09-6125	1380-(591)
02-09-6123	1380-(550)L
02-09-6122	1380-(550)
02-09-2119	1380-A(P901)L
02-09-2117	1380-A(P901)



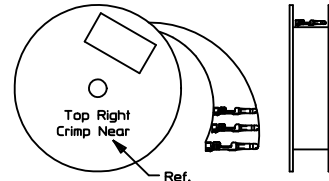
REWOUND CHAIN



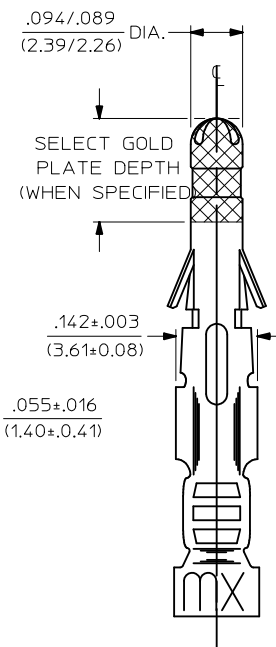
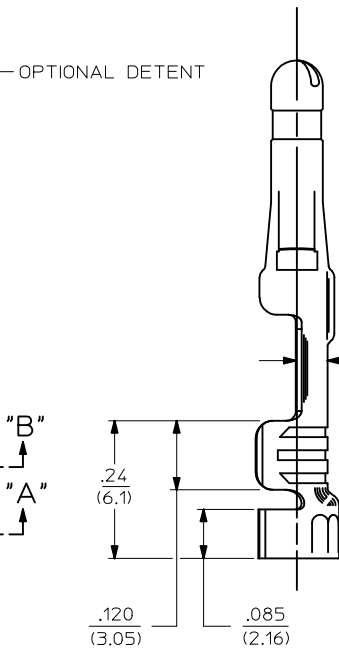
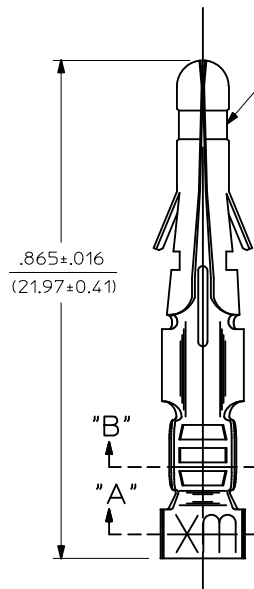
SECT. "A-A"



SECT. "B-B"



STANDARD CHAIN



LEGEND

1380-*(***)*

- OPTIONAL DETENT
- BLANK = WITH DETENT
- A = WITHOUT DETENT
- P = PREPLATE
- BLANK = POSTPLATE
- FORM
- BLANK = STD. CHAIN
- A = REWOUND CHAIN
- L = LOOSE
- 1 = STD. CHAIN WITH INTERLEAF PAPER
- FINISH CODE (SEE NOTE 2)

NOTES:

1. MATERIAL: BRASS
2. FINISH:
 - 999 UNPLATED
 - 901 HOT TIN DIP .000020/(0.00051) MIN.
 - 591 SELECT GOLD PLATE .000050/(0.00127) MIN. IN CONTACT AREA, OVER .000050/(0.00127) MIN. NICKEL OVERALL WITH .000010/(0.00025) MAX. GOLD FLASH OVERALL.
 - 550 SELECT GOLD PLATE .000015/(0.00038) MIN. IN CONTACT AREA, OVER .000030/(0.00076) MIN. NICKEL OVERALL WITH .000010/(0.00025) MAX. GOLD FLASH OVERALL.
3. PRODUCT SPECIFICATION: PS-02-09.
4. PACKAGING INFORMATION: NOT AVAILABLE
5. TERMINAL FOR USE WITH .093/(2.36) SERIES HOUSINGS AND WILL ACCEPT 18 THRU 22 AWG
6. INSERTION FORCE: 3.5 LBS. MAX. WHEN TERMINAL IS INSERTED INTO AN .093 SERIES HOUSING.
7. TERMINAL RETENTION: 20 LBS. MIN. FROM HOUSING.



REVISED/REDRAWN EC NO: UCP2004-2354 DRWN:RHOLTS 2005/07/20 CHKD:FSMITH 2005/07/20 APPR:FSMITH 2005/07/20	QUALITY SYMBOLS	GENERAL TOLERANCES (UNLESS SPECIFIED)	SCALE 6:1	DESIGN UNITS INCH	THIRD ANGLE PROJECTION	REVISE ON CAD ONLY	
	DESCRIPTION		mm	INCH	TITLE		
	▽ - 0	4 PLACES ± --- ± ---	DIMENSION STYLE IN/MM		CRIMP TERMINAL .093 DIA., MALE FOR 18 THRU 22 AWG. WIRE		
	∇ - 0	3 PLACES ± --- ± .010	DRAWN BY DATE		MATERIAL NO. DOCUMENT NO. SHEET NO.		
	2 PLACES ± .025 ± .14	GEP 1987/11/06		MOLEX MOLEX INCORPORATED			
	1 PLACE ± 0.35 ± ---	CHECKED BY DATE		SEE CHART SD-1380-* 1 OF 1			
	ANGULAR ± 1/2°	APPROVED BY DATE		THIS DRAWING CONTAINS INFORMATION THAT IS PROPRIETARY TO MOLEX INCORPORATED AND SHOULD NOT BE USED WITHOUT WRITTEN PERMISSION			
	DRAFT WHERE APPLICABLE	RAS 1987/11/06					
	MUST REMAIN WITHIN DIMENSIONS						