

LTM8078 40V, 1.4A Dual Step-Down μ Module Regulator

DESCRIPTION

Demonstration circuit 2777A is a dual step-down DC/DC switching converter featuring the [LTM[®]8078](#) μ Module regulator. The demo board is designed to deliver dual 5V/1.4A and 3.3V/1.4A outputs from a 7V to 40V input. The Silent Switcher[®] architecture minimizes EMI while achieving high efficiency at frequencies up to 3MHz. The modes of operation (Burst Mode[®] operation or discontinuous mode/SYNC) are jumper selectable. Burst Mode operation improves efficiency at light loads.

The LTM8078 is a fixed frequency PWM regulator with current mode control scheme. The switching frequency is set by an appropriate resistor (R11) from the RT pin

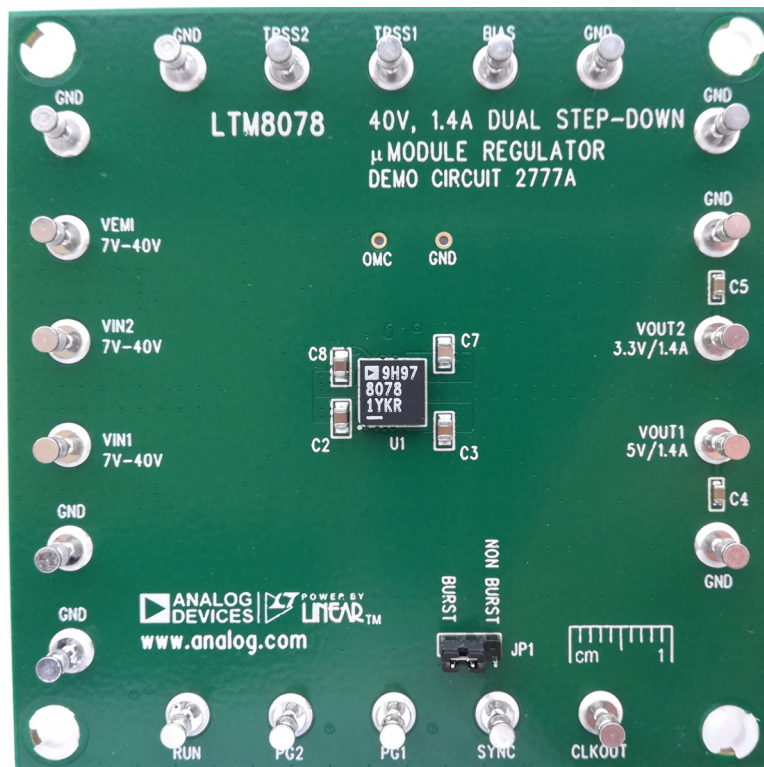
to ground. The RUN pin (RUN terminal) can be used to set the LTM8078 in micropower shutdown mode. Output tracking and soft-start pins (TRSS1/TRSS2) allow user control of output voltage ramp rate during start-up. The power good output of each channel (PG1 or PG2 terminal) will be low when that channel's output voltage is outside of the $\pm 7.5\%$ regulation window.

The LTM8078 data sheet gives a complete description of the operation and application information. The data sheet must be read in conjunction with this demo manual

[Design files for this circuit board are available.](#)

All registered trademarks and trademarks are the property of their respective owners.

BOARD PHOTO



DEMO MANUAL DC2777A

PERFORMANCE SUMMARY Specifications are at $T_A = 25^\circ\text{C}$

PARAMETER	CONDITION	VALUE
Input Voltage Range		7V to 40V
Output Voltage, V_{OUT1}	$V_{IN} = 7\text{V to } 40\text{V}$, $I_{OUT1} = 0\text{A to } 1.4\text{A}$	$5\text{V} \pm 2\%$
Output Voltage, V_{OUT2}	$V_{IN} = 7\text{V to } 40\text{V}$, $I_{OUT2} = 0\text{A to } 1.4\text{A}$	$3.3\text{V} \pm 2\%$
Maximum Output Current, I_{OUT1}	$V_{IN} = 7\text{V to } 40\text{V}$, $V_{OUT1} = 5\text{V}$	1.4A
Maximum Output Current, I_{OUT2}	$V_{IN} = 7\text{V to } 40\text{V}$, $V_{OUT2} = 3.3\text{V}$	1.4A
Typical Switching Frequency		1.6MHz
Typical Efficiency, V_{OUT1} (5V)	$V_{IN} = 12\text{V}$, $I_{OUT1} = 1.4\text{A}$, Burst Mode Operation	91.4%
Typical Efficiency, V_{OUT2} (3.3V)	$V_{IN} = 12\text{V}$, $I_{OUT2} = 1.4\text{A}$, Burst Mode Operation	88.5%

QUICK START PROCEDURE

Demonstration circuit 2777A is easy to set up to evaluate the performance of the LTM8078. Refer to Figure 1 for the proper measurement equipment setup and follow the procedure below:

1. With power off, connect the input power supply to V_{IN1} (7V to 40V) and GND (input return).
2. Connect the 5V output load between V_{OUT1} and GND (Initial load: no load); and connect the 3.3V output load between V_{OUT2} and GND (Initial load: no load).
3. Connect the DVMs to the input and outputs.
4. Turn on the input power supply and check for the proper output voltages. V_{OUT1} should be $5V \pm 2\%$; V_{OUT2} should be $3.3V \pm 2\%$.

5. Once the proper output voltages are established, adjust the loads within the operating range and observe the output voltage regulation, efficiency and other parameters.

Note: When measuring the output or input voltage ripple, do not use the long ground lead on the oscilloscope probe. See Figure 2 for the proper scope probe technique. Short, stiff leads need to be soldered to the (+) and (-) terminals of an output capacitor. The probe's ground ring needs to touch the (-) lead and the probe tip needs to touch the (+) lead.

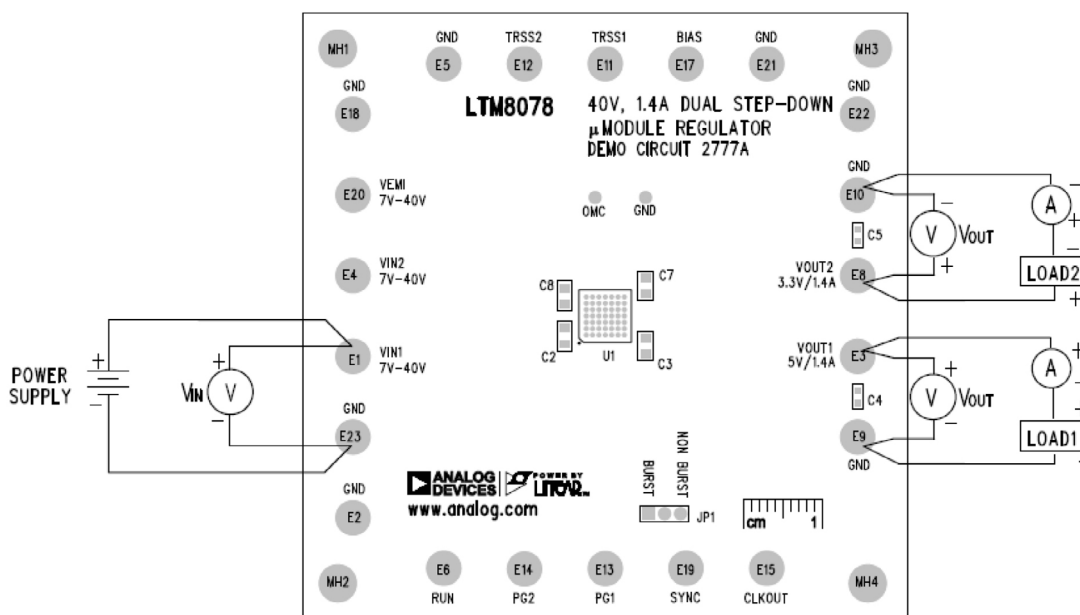


Figure 1. Proper Measurement Equipment Setup

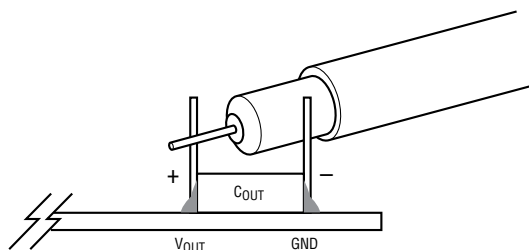


Figure 2. Measuring Output Voltage Ripple

QUICK START PROCEDURE

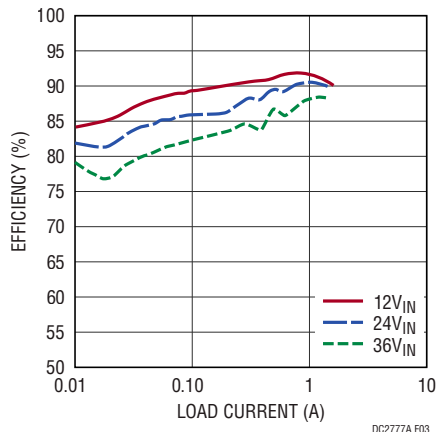


Figure 3. 5V Efficiency vs Load Current (Burst Mode Operation, 1.6MHz, Channel 2 No Load)

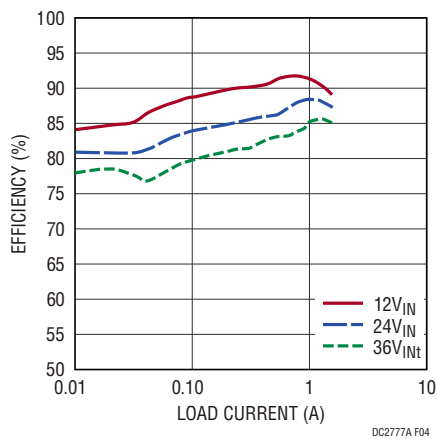


Figure 4. 3.3V Efficiency vs Load Current (Burst Mode Operation, 1.6MHz, Channel 1 No Load)

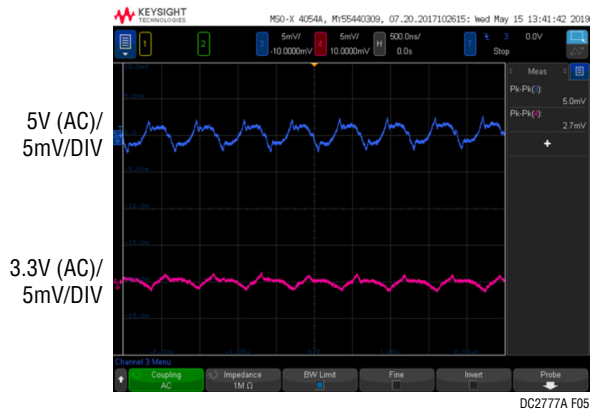


Figure 5. Output Voltage Ripples (12V_{IN}, 1.4A Load on Each Output, SYNC Pin Floated)

QUICK START PROCEDURE

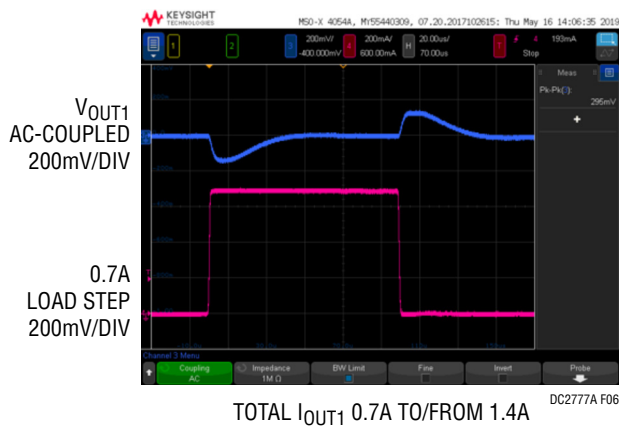


Figure 6. Load Step Transient Test ($V_{IN} = 12V$, $V_{OUT1} = 5V$)

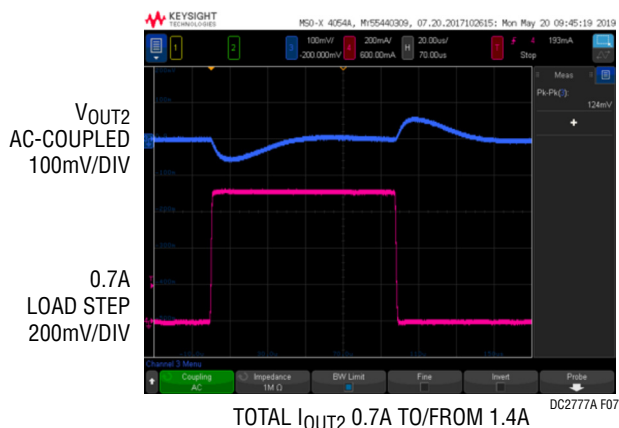


Figure 7. Load step transient test ($V_{IN} = 12V$, $V_{OUT2} = 3.3V$)

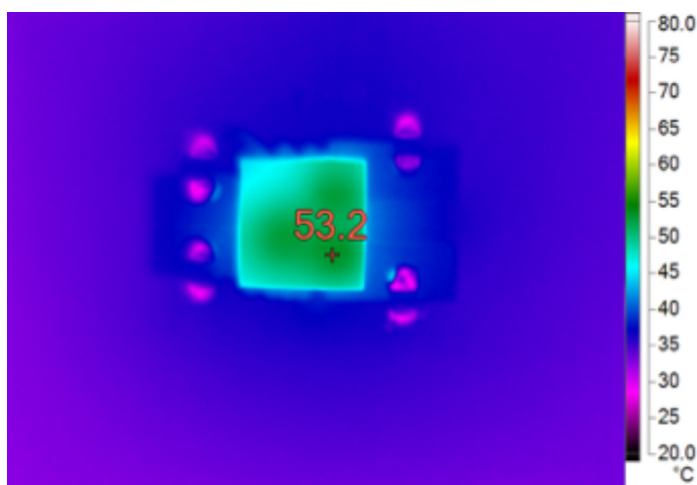


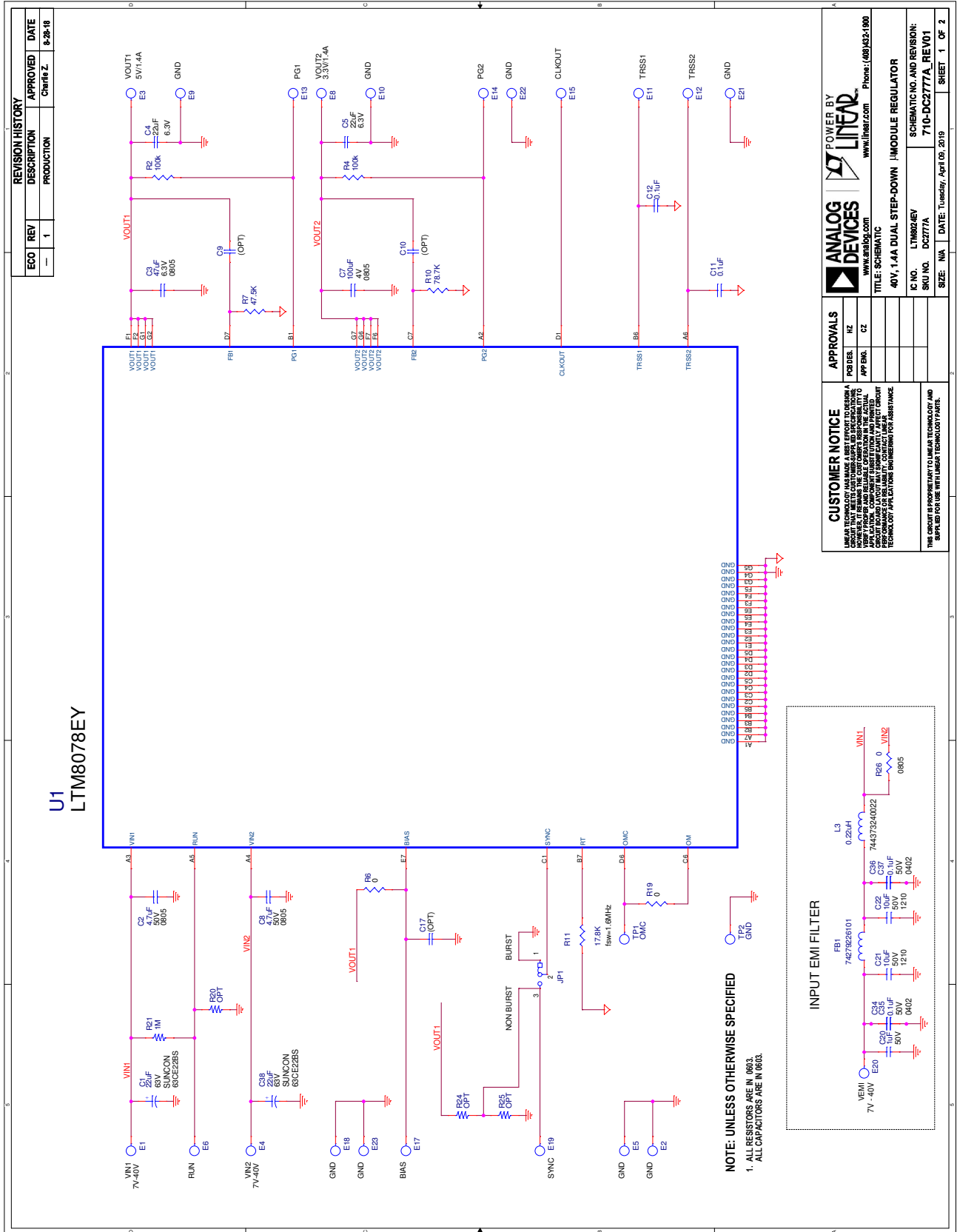
Figure 8. Thermal Picture ($V_{IN} = 12V$, $V_{OUT1} = 5V$, $V_{OUT2} = 3.3V$, 1.4A Load on Each Channel)

DEMO MANUAL DC2777A

PARTS LIST

ITEM	QTY	REFERENCE	PART DESCRIPTION	MANUFACTURER/PART NUMBER
Required Circuit Components				
1	2	C1, C38	CAP., 22 μ F, ALUM, 63V	SUN ELECT., 63CE22BS
2	2	C2, C8	Cap., 4.7 μ F X5R 50V 10% 0805	MURATA, GRM21BR61H475KE51L
3	1	C3	Cap., 47 μ F X5R 6.3V 20% 0805	MURATA, GRM219R60J476ME44D
4	2	C4,C5	Cap., 22 μ F X5R 6.3V 20% 0603	MURATA, GRM188R60J226MEA0D
5	1	C7	Cap., 100 μ F X5R 4V 20% 0805	MURATA, GRM21BR60G107ME11L
7	2	C11, C12	CAP., 0.1 μ F, X5R, 50V, 10%, 0603	MURATA, GRM188R61H104KA93D
8	1	C20	CAP., 1 μ F, X7R, 50V, 10%, 0603	TAIYO YUDEN, UMK107AB7105KA-T
9	2	C21, C22	CAP., 10 μ F, X7R, 50V, 10% 1210	MURATA, GRM32ER71H106KA12L
10	4	C34, C35, C36, C37	CAP., 0.1 μ F, X7R, 50V, 10%, 0402	MURATA, GRM155R71H104KE14D
12	1	FB1	IND., PWR. BEAD, 25% 8000mA 6m Ω 1812	WURTH ELEKTRONIK, 74279226101
14	1	L3	INDUCTOR, 0.22 μ H	WURTH ELEKTRONIK, 744373240022
15	2	R2, R4	RES., CHIP, 100k, 0.1W, 1%, 0603	VISHAY, CRCW0603100KFKEA
16	2	R6, R19	RES., CHIP, 0 Ω , 0.1W, 1%, 0603	VISHAY, CRCW06030000Z0EA
17	1	R7	RES., CHIP, 47.5k, 0.1W, 1%, 0603	VISHAY, CRCW060347K5FKEAC
18	1	R10	RES., CHIP, 78.7k, 0.1W, 1%, 0603	VISHAY, CRCW060378K7FKEA
19	1	R11	RES., CHIP, 17.8k, 0.1W, 1%, 0603	PANASONIC, ERJ-3EKF1782V
21	1	R21	RES., CHIP, 1M Ω , 0.1W, 1%, 0603	VISHAY, CRCW06031M00FKEA
22	1	R26	RES., CHIP, 0 Ω , 0.1W, 1%, 0805	VISHAY, CRCW08050000Z0EA
24	1	U1	I.C., VOLTAGE REG. BGA	ANALOG DEVICES, LTM8078EY#PBF
Additional Demo Board Circuit Components				
6	0	C9, C10, C17	CAP	OPT
20	0	R20, R24, R25	RES.	OPT
Hardware for Demo Board Only				
11	21	E1-E15, E17-E23	TESTPOINT, TURRET, 0.094" PBF	MILL-MAX, 2501-2-00-80-00-00-07-0
13	2	JP1, JP3	HEADERS, 3 PINS, 2mm CTRS.	WURTH ELEKTRONIK, 62000311121
23	2	XJP1,XJP3	SHUNT, 2mm CTRS.	WURTH ELEKTRONIK, 60800213421
25	4	MH1-MH4	STANDOFF, NYLON, 0.25"	WURTH ELEKTRONIK, 702931000
26	1		FAB, PRINTED CIRCUIT BOARD	DEMO CIRCUIT 2777A
27	2		STENCILS (TOP AND BOTTOM)	STENCIL DC2777A

SCHEMATIC DIAGRAM





ESD Caution

ESD (electrostatic discharge) sensitive device. Charged devices and circuit boards can discharge without detection. Although this product features patented or proprietary protection circuitry, damage may occur on devices subjected to high energy ESD. Therefore, proper ESD precautions should be taken to avoid performance degradation or loss of functionality.

Legal Terms and Conditions

By using the evaluation board discussed herein (together with any tools, components documentation or support materials, the "Evaluation Board"), you are agreeing to be bound by the terms and conditions set forth below ("Agreement") unless you have purchased the Evaluation Board, in which case the Analog Devices Standard Terms and Conditions of Sale shall govern. Do not use the Evaluation Board until you have read and agreed to the Agreement. Your use of the Evaluation Board shall signify your acceptance of the Agreement. This Agreement is made by and between you ("Customer") and Analog Devices, Inc. ("ADI"), with its principal place of business at One Technology Way, Norwood, MA 02062, USA. Subject to the terms and conditions of the Agreement, ADI hereby grants to Customer a free, limited, personal, temporary, non-exclusive, non-sublicensable, non-transferable license to use the Evaluation Board FOR EVALUATION PURPOSES ONLY. Customer understands and agrees that the Evaluation Board is provided for the sole and exclusive purpose referenced above, and agrees not to use the Evaluation Board for any other purpose. Furthermore, the license granted is expressly made subject to the following additional limitations: Customer shall not (i) rent, lease, display, sell, transfer, assign, sublicense, or distribute the Evaluation Board; and (ii) permit any Third Party to access the Evaluation Board. As used herein, the term "Third Party" includes any entity other than ADI, Customer, their employees, affiliates and in-house consultants. The Evaluation Board is NOT sold to Customer; all rights not expressly granted herein, including ownership of the Evaluation Board, are reserved by ADI. CONFIDENTIALITY. This Agreement and the Evaluation Board shall all be considered the confidential and proprietary information of ADI. Customer may not disclose or transfer any portion of the Evaluation Board to any other party for any reason. Upon discontinuation of use of the Evaluation Board or termination of this Agreement, Customer agrees to promptly return the Evaluation Board to ADI. ADDITIONAL RESTRICTIONS. Customer may not disassemble, decompile or reverse engineer chips on the Evaluation Board. Customer shall inform ADI of any occurred damages or any modifications or alterations it makes to the Evaluation Board, including but not limited to soldering or any other activity that affects the material content of the Evaluation Board. Modifications to the Evaluation Board must comply with applicable law, including but not limited to the RoHS Directive. TERMINATION. ADI may terminate this Agreement at any time upon giving written notice to Customer. Customer agrees to return to ADI the Evaluation Board at that time. LIMITATION OF LIABILITY. THE EVALUATION BOARD PROVIDED HEREUNDER IS PROVIDED "AS IS" AND ADI MAKES NO WARRANTIES OR REPRESENTATIONS OF ANY KIND WITH RESPECT TO IT. ADI SPECIFICALLY DISCLAIMS ANY REPRESENTATIONS, ENDORSEMENTS, GUARANTEES, OR WARRANTIES, EXPRESS OR IMPLIED, RELATED TO THE EVALUATION BOARD INCLUDING, BUT NOT LIMITED TO, THE IMPLIED WARRANTY OF MERCHANTABILITY, TITLE, FITNESS FOR A PARTICULAR PURPOSE OR NON-INFRINGEMENT OF INTELLECTUAL PROPERTY RIGHTS. IN NO EVENT WILL ADI AND ITS LICENSORS BE LIABLE FOR ANY INCIDENTAL, SPECIAL, INDIRECT, OR CONSEQUENTIAL DAMAGES RESULTING FROM CUSTOMER'S POSSESSION OR USE OF THE EVALUATION BOARD, INCLUDING BUT NOT LIMITED TO LOST PROFITS, DELAY COSTS, LABOR COSTS OR LOSS OF GOODWILL. ADI'S TOTAL LIABILITY FROM ANY AND ALL CAUSES SHALL BE LIMITED TO THE AMOUNT OF ONE HUNDRED US DOLLARS (\$100.00). EXPORT. Customer agrees that it will not directly or indirectly export the Evaluation Board to another country, and that it will comply with all applicable United States federal laws and regulations relating to exports. GOVERNING LAW. This Agreement shall be governed by and construed in accordance with the substantive laws of the Commonwealth of Massachusetts (excluding conflict of law rules). Any legal action regarding this Agreement will be heard in the state or federal courts having jurisdiction in Suffolk County, Massachusetts, and Customer hereby submits to the personal jurisdiction and venue of such courts. The United Nations Convention on Contracts for the International Sale of Goods shall not apply to this Agreement and is expressly disclaimed.