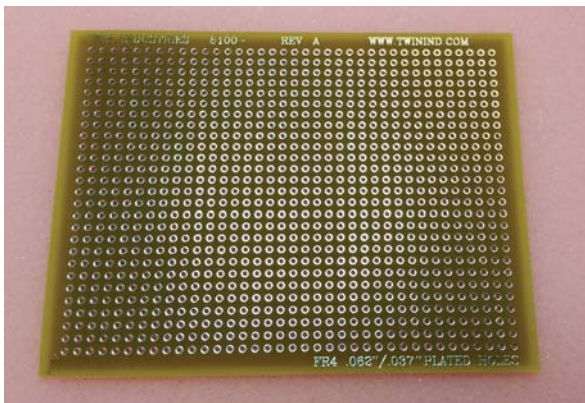




Twin Industries 8100 series prototyping boards provide a versatile solution for electronic hardware development projects. All boards are made with high quality FR4 material. Sizes available; 4"x5" (8100-45) 4"x10" (8100-410), 10"x10" (8100-1010), and 4.5" x 6.5" (8100-4565)

FEATURES:

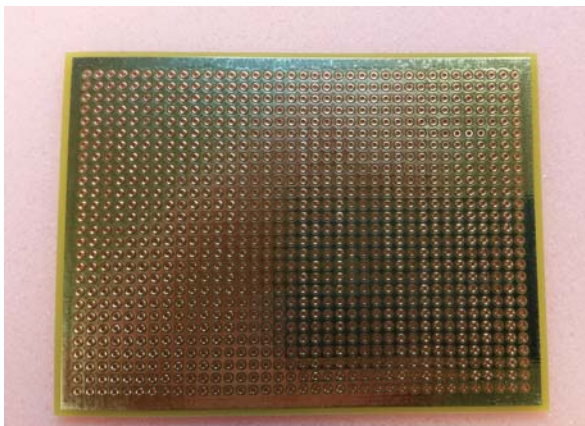
- FR4 laminate, 0.062" thick
- Prototyping holes spaced on a 0.1" x 0.1" grid
- Plated hole interior diameter = 0.037"
- Plated holes w/pads and one plane for power/ground



PART NUMBER

8100-XXXX

Top Side



PART NUMBER

8100-XXXX

Bottom Side

For additional product information, please visit www.twinind.com

Contact information: 925-866-8946 (phone) 925-866-8947 (fax) Sales@twinind.com