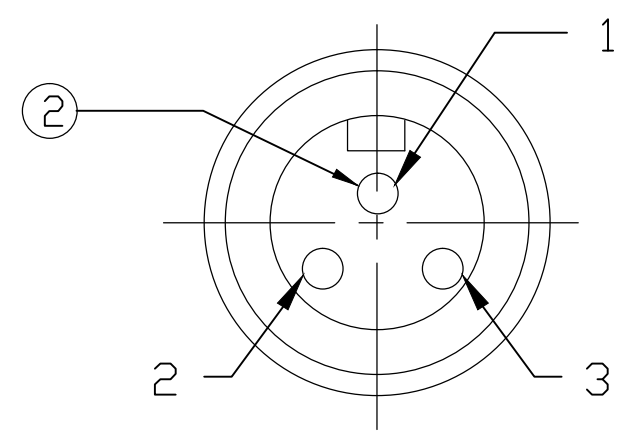
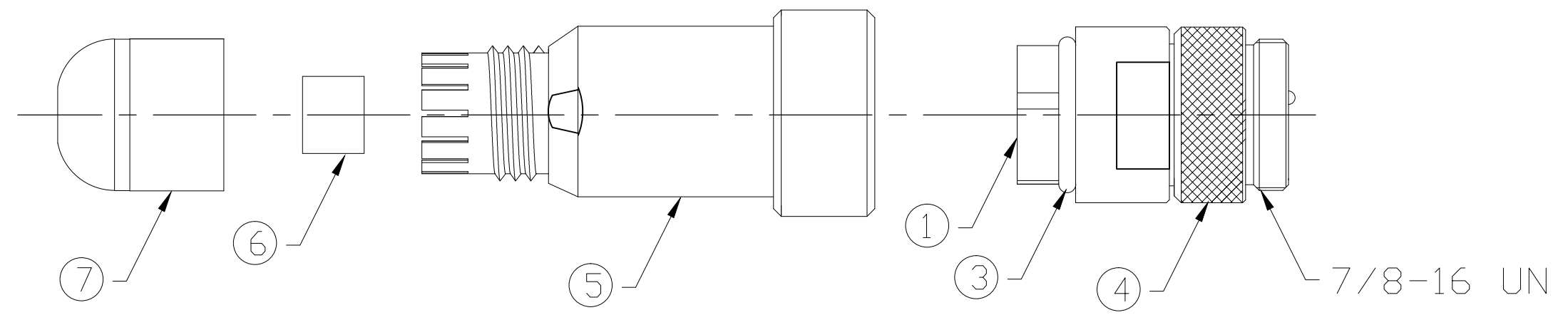
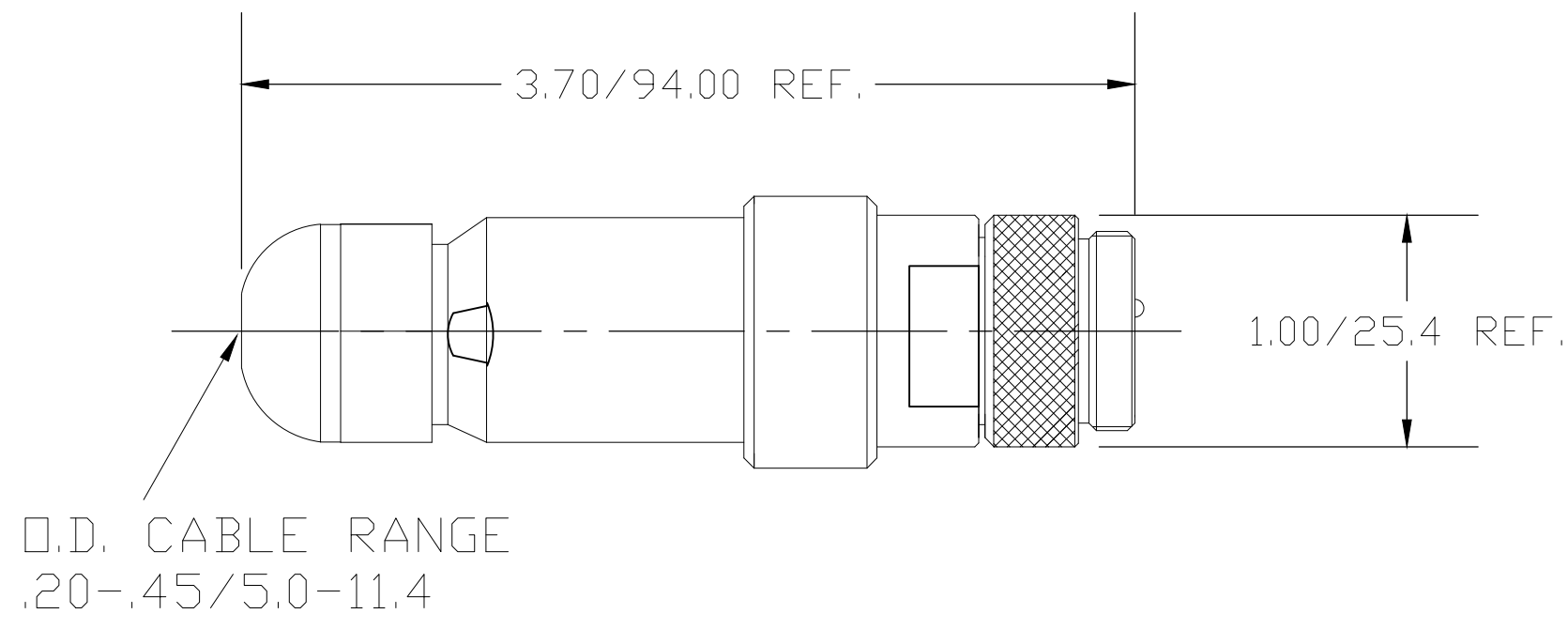
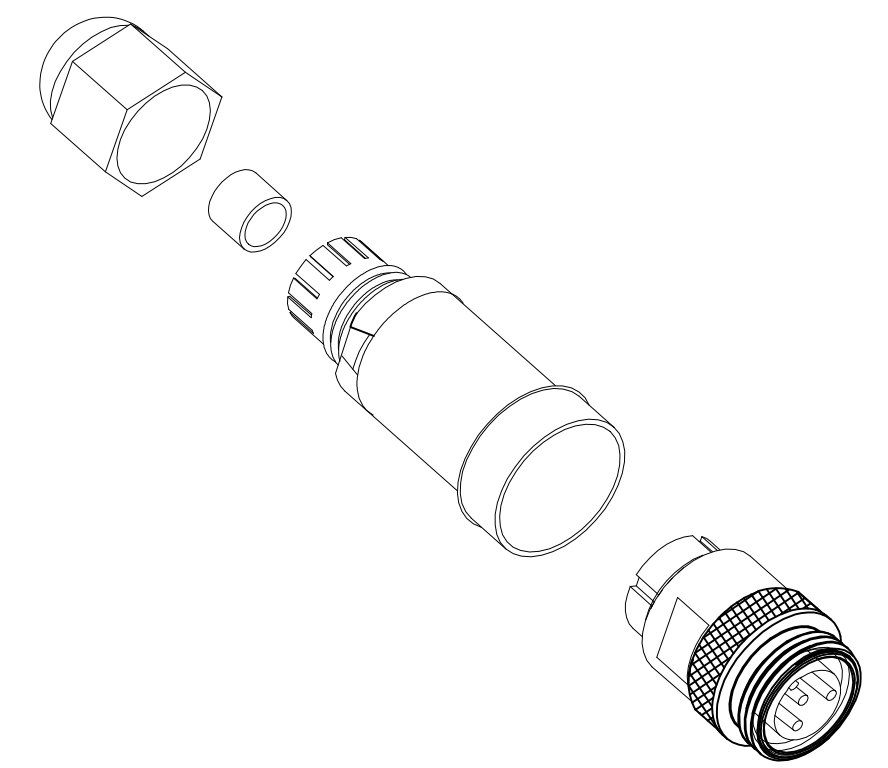
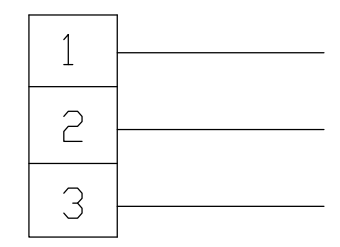


|                        |                                |                              |                            |   |   |   |   |   |   |   |   |   |
|------------------------|--------------------------------|------------------------------|----------------------------|---|---|---|---|---|---|---|---|---|
| 13                     | 12                             | 11                           | 10                         | 9 | 8 | 7 | 6 | 5 | 4 | 3 | 2 | 1 |
| <b>MATERIAL NUMBER</b> | <b>ENGINEERING PART NUMBER</b> | <b>COUPLING NUT MATERIAL</b> | <b>COUPLING NUT FINISH</b> |   |   |   |   |   |   |   |   |   |
| 1300170011             | 1A3006-34                      | BRASS                        | NICKEL PLATED              |   |   |   |   |   |   |   |   |   |
| 1300170012             | 1A3006-348                     | STAINLESS STEEL              | PASSIVATED                 |   |   |   |   |   |   |   |   |   |



MALE FACE VIEW



WIRING CHART

|                              |                                |
|------------------------------|--------------------------------|
| VOLTAGE RATING PER UL 2238   | 600VAC/VDC                     |
| VOLTAGE RATING PER IEC 60664 | 500V                           |
| AMPERAGE RATING              | 13 AMPS                        |
| PROTECTION                   | IP67 (WHEN MATED)              |
| OPERATING TEMPERATURE        | -20°C TO 80°C                  |
| CSA CERTIFICATIONS           | CSA CERTIFIED, FILE NO. LR6837 |

| ITEM | COMPONENT      | MATERIAL     | FINISH      |
|------|----------------|--------------|-------------|
| 1    | INSERT         | NYLON        | BLACK       |
| 2    | PIN CONTACTS   | COPPER ALLOY | GOLD PLATED |
| 3    | O-RING         | NITRILE      | BLACK       |
| 4    | COUPLING NUT   | SEE CHART    | SEE CHART   |
| 5    | MOLDED BODY    | NYLON        | BLACK       |
| 6    | GROMMET        | NITRILE      | BLACK       |
| 7    | CORD GRIP BODY | NYLON        | BLACK       |

|   |                              |                                       |          |  |                      |                         |  |                                  |  |   |                            |
|---|------------------------------|---------------------------------------|----------|--|----------------------|-------------------------|--|----------------------------------|--|---|----------------------------|
| ADD IEC VOLTAGE RATING<br>EC NO.: IPG2017-1018<br>DRWN: RSTONE 5/1/17<br>CH'KD: M ZIELIN 2017/05/08<br>APPR: BWOODMAN2009/08/26 | QUALITY SYMBOL<br>▽=0<br>▽=0 | GENERAL TOLERANCES (UNLESS SPECIFIED) |          | DIMENSION STYLE<br>IN/MM                             |                      | SCALE<br>---            | DESIGN UNITS<br>INCH   | THIRD ANGLE PROJECTION           |  |   |                            |
|   |                              |                                       | mm       | INCH   | DRAWN BY<br>TWOLDEGE | DATE<br>2009/08/25      | TITLE<br><b>MINI CHANGE ATTACHABLE<br/>         3-POLE MALE ST<br/>         .20-.45 O.D. CABLE RANGE</b> |                                  |  |   |                            |
|   |                              |                                       | 4 PLACES | ±---   | ±---                 | CHECKED BY<br>BWOODMAN  | DATE<br>2009/08/25   | <b>MOLEX INCORPORATED</b>        |  |   |                            |
|   |                              |                                       | 3 PLACES | ±---   | ±---                 | APPROVED BY<br>JFMURPHY | DATE<br>2009/08/26   | MATERIAL NO.<br><b>SEE CHART</b> |  | DOCUMENT NO.<br><b>SD-130017-007</b>  | SHEET NO.<br><b>1 OF 1</b> |
|   | 2 PLACES                     | ±---                                  | ±---     | DRAFT WHERE APPLICABLE MUST REMAIN WITHIN DIMENSIONS |                      |                         |  |                                  |  | THIS DRAWING CONTAINS INFORMATION THAT IS PROPRIETARY TO MOLEX INCORPORATED AND SHOULD NOT BE USED WITHOUT WRITTEN PERMISSION |                            |
|   | 1 PLACE                      | ±---                                  | ±---     |  |                      |                         |  |                                  |  |   |                            |
| SIZE<br><b>C</b>  |                              |                                       |          |  |                      |                         |  |                                  |  |   |                            |