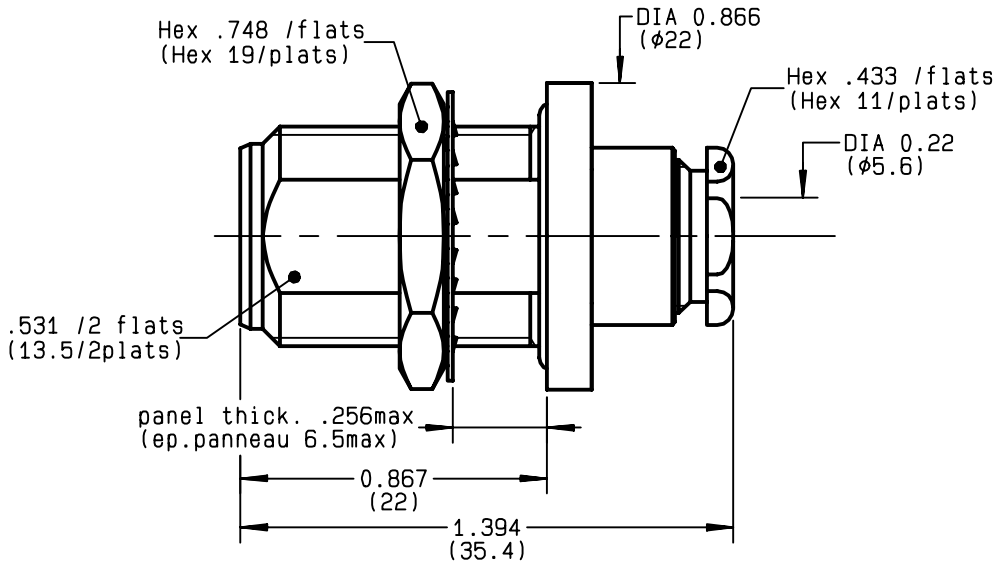
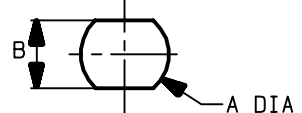


**STRAIGHT BULKHEAD JACK PANEL SEAL  
CLAMP TYPE - CABLE 5/50 S+D**

**R161.325.000**  
**SERIES N**



PERCAGE PANNEAU  
MOUNTING HOLE



	MM		INCH	
	maxi	mini	maxi	mini
A	16.1	16	0.634	0.63
B	13.7	13.6	0.539	0.535

NOMINAL IMPEDANCE	<b>50</b>	Ω
FREQUENCY RANGE	<b>0-11</b>	GHz
TEMPERATURE RATING	<b>-55/+155</b>	°C
V.S.W.R	<b>1.30</b> +	x F(GHz)Maxi
RF INSERTION LOSS	<b>0.048</b>	√F(GHz) dB Maxi
VOLTAGE RATING	<b>850</b>	Veff Maxi
DIELECTRIC WITHSTANDING VOLTAGE	<b>1500</b>	Veff Mini
INSULATION RESISTANCE	<b>5000</b>	MΩMini
HERMETIC SEAL	<b>NA</b>	Atm.cm <sup>3</sup> /s
LEAKAGE (pressurized only)	<b>IP 67</b>	
MECHANICAL DURABILITY	<b>500</b>	Cycles
WEIGHT	<b>39</b>	gr
SPECIFICATION		

- CABLES : **KX 15**  
**KX 23**  
**RG 141**  
**RG 142**  
**RG 142 FTX**  
**RG 223**  
**RG 400**  
**RG 58**

OTHERS CHARACTERISTICS

CABLE RETENTION	<b>150</b>	N Mini
CENTER CONTACT RETENTION		
Axial force - mating end	<b>27</b>	N Mini
Axial force - opposite end	<b>27</b>	N Mini
Torque	<b>NA</b>	cm.N Mini
RECOMMENDED TORQUES		
Mating	<b>NA</b>	cm.N
Panel nut	<b>500</b>	cm.N
Clamp nut	<b>450</b>	cm.N

CONNECTOR PARTS	MATERIALS	FINISH	(all values are given in micrometers)
BODY	BRASS	BBR 2	
OUTER CONTACT	BRASS	BBR 2	
CENTER CONTACT	BERYLLIUM COPPER	GOLD 0.5 OVER NICKEL 2	
INSULATOR	PTFE	-	
GASKET	SILICONE RUBBER	-	
OTHERS PIECES	BRASS	BBR 2	

BONMINI

ISSUE <b>9734R02</b>	CREATION DATE <b>03/02/1993</b>	FILE PART-NUMBER <b>EPC 96-07</b>
-------------------------	------------------------------------	--------------------------------------



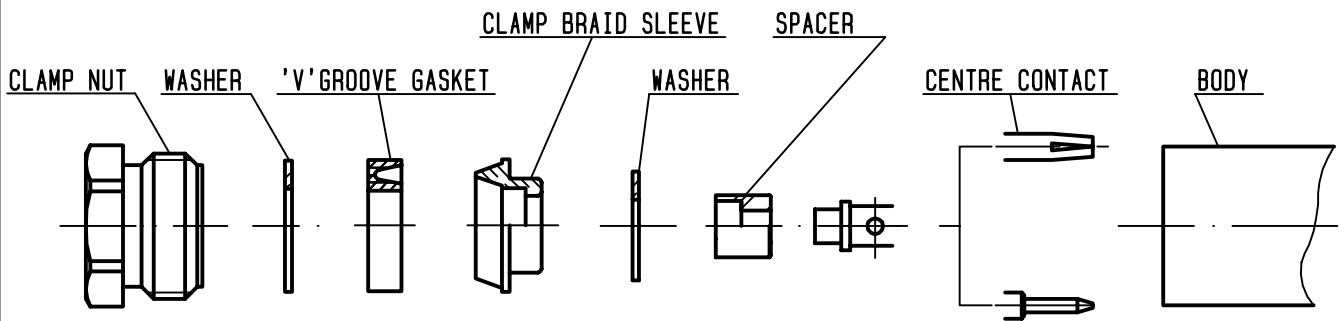
The information given here is subject to change without notice.  
Design changes may be in order to improve the product .

Connect to the future



**R161.325.000**

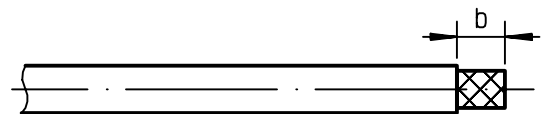
ISSUE **9734R02** SERIES **N**



①

Strip the cable .

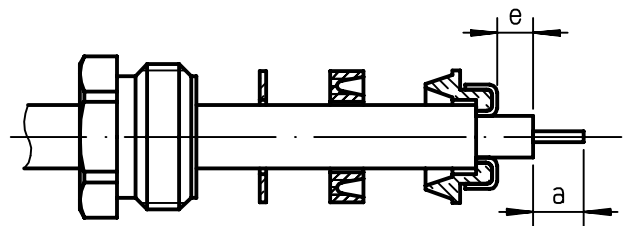
-  
-  
-  
-



Stripping	a	b	c	d	e
inch	0.157	0.295	0	0	0.039
mm	4	7.5			1

②

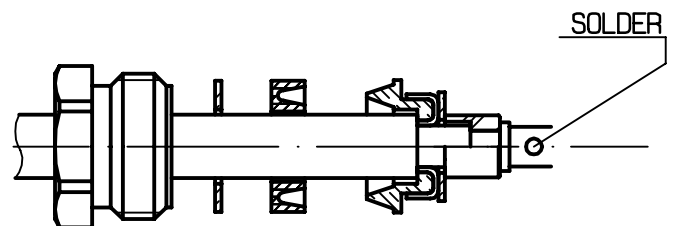
Slide the clamp nut , the washer and the 'V'groove gasket onto the cable .  
Slide clamp braid sleeve over braid .  
Fold back braid and trim off surplus braid .  
Trim back dielectric as shown .



③

Slide the washer and the spacer onto the dielectric .  
Solder the cable inner conductor into centre contact .

-



④

Screw sub-assembly into the connector body .  
( recommended coupling torque 39.83 in.lb )

-  
-

