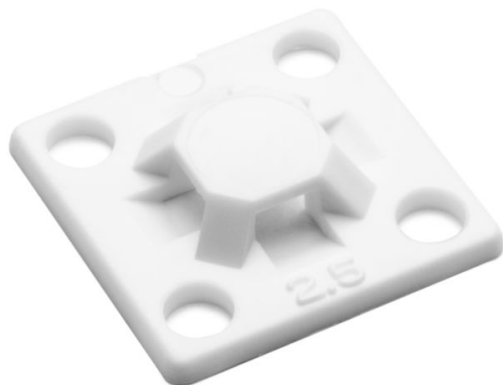


Specification Sheet

Part Number: MB2.510C2



Screw Mount Cable Tie Base, .63" x .63", .10" Max Tie Width, .11" Hole Dia, PA66, White, 100/pkg

Article Number	151-28901
Type	MB2.5
Color	White (WH)
Features & Benefits	<ul style="list-style-type: none">•Compact size fits most mounting applications.•Simple to install with a screw or rivet.•Single hole attachment with two-way entry for cable tie.
Quantity Per	bag
Product Description	These cable tie mounts are compact in size. They are designed for simple yet robust installation. They pair with a cable tie for mounting applications including telecom equipment, switchgear and control cabinets.
Short Description	Screw Mount Cable Tie Base, .63" x .63", .10" Max Tie Width, .11" Hole Dia, PA66, White, 100/pkg

Global Part Name

MB2.5-PA66-WH

Length L (Imperial)

0.625

Length L (Metric)

15.9

Fixation Method

Screw Mounting and Rivet

Width W (Imperial)

0.625

Width W (Metric)

15.9

Cable Ties

T18

Height H (Imperial)

.13

Height H (Metric)

3.30

Cable Tie Width Max (Imperial)

0.1

Cable Tie Width Max (Metric)

2.54

Mounting Hole Diameter D (Imperial)

0.11

Mounting Hole Diameter D (Metric)

2.8 mm

Mounting Hole Diameter D Max (Metric)

2.8

Material

Polyamide 6.6 (PA66)

Material Shortcut

PA66

Flammability

UL 94 V2

Operating Temperature (Metric)

-40°F to +185°F (-40°C to +85°C)

ROHS Complaint

Yes

UL Recognized (US)

Yes

UL Recognized (US and Canada)

Yes

Package Quantity(Imperial)

100

Package Quantity (Metric)

100

Customs Number

3926909988