

To _____

No. A767-040403M-01

Date 3rd Apr. '04

Type No.
PRDA2

Data Sheet

PCS1900 Rx SAW Filter	
Application	: Rx Filter for PCS1900
Center Frequency	: 1960MHz
Size	: 2.0x1.4mm, 5pin-layout
Impedance	: 50-50ohms unbalance-unbalance
Part No.	: EFCH1960TCD1

Issued *A. Tsunekawa*
Check *K. Nishimura*

CIRCUIT COMPONENTS BUSINESS UNIT
MATSUSHITA ELECTRONIC COMPONENTS CO.,LTD
KADOMA, OSAKA, JAPAN

PCS1900 Rx SAW Filter

----- Unbalanced input and unbalanced output -----

Part No. :

Design No. : T1960T5D2

Parameter		Frequency	Your request			Our Specification			Unit
			Min.	Typ.	Max.	Min.	Typ.	Max.	
Passband						1930 ... 1990			MHz
Insertion loss		1930 ... 1990MHz					1.7	2.8	dB
Ripple in passband		1930 ... 1990MHz					0.6	1.7	dB
Attenuation	Att1	DC ... 1830MHz				29	36		dB
	Att2	1830... 1910MHz				13	16		dB
	Att3	2010 ... 2070MHz				13	17		dB
	Att4	2070 ... 2500MHz				26	28		dB
	Att5	2500 ... 4000MHz				24	28		dB
	Att6	4000 ... 6000MHz				20	38		dB
VSWR	Input	1930... 1990MHz					2.0	2.2	
	Output	1930 ... 1990MHz					2.0	2.2	
Input impedance(Single ended)						50			Ohm
Output impedance(Single ended)						50			Ohm
Maximum drive level								15	dBm
Maximum DC voltage								5	V
ESD								50	V
Operating temperature						-10		+80	deg. C
Storage temperature						-40		+85	deg. C

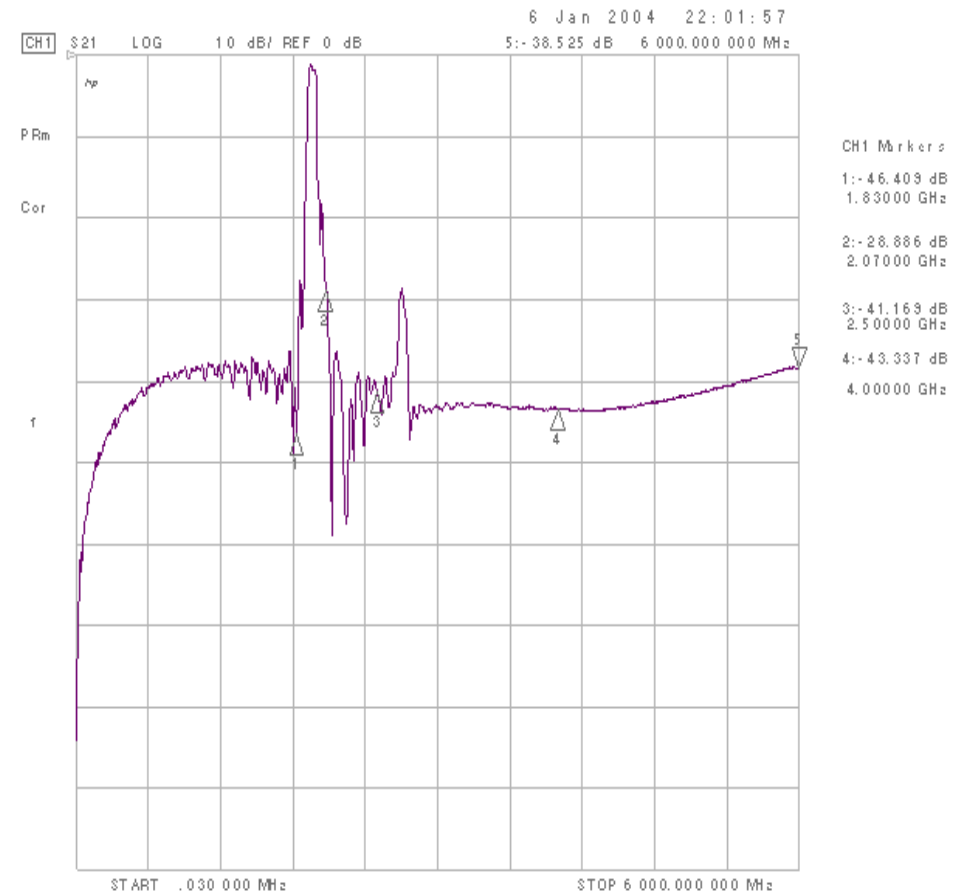
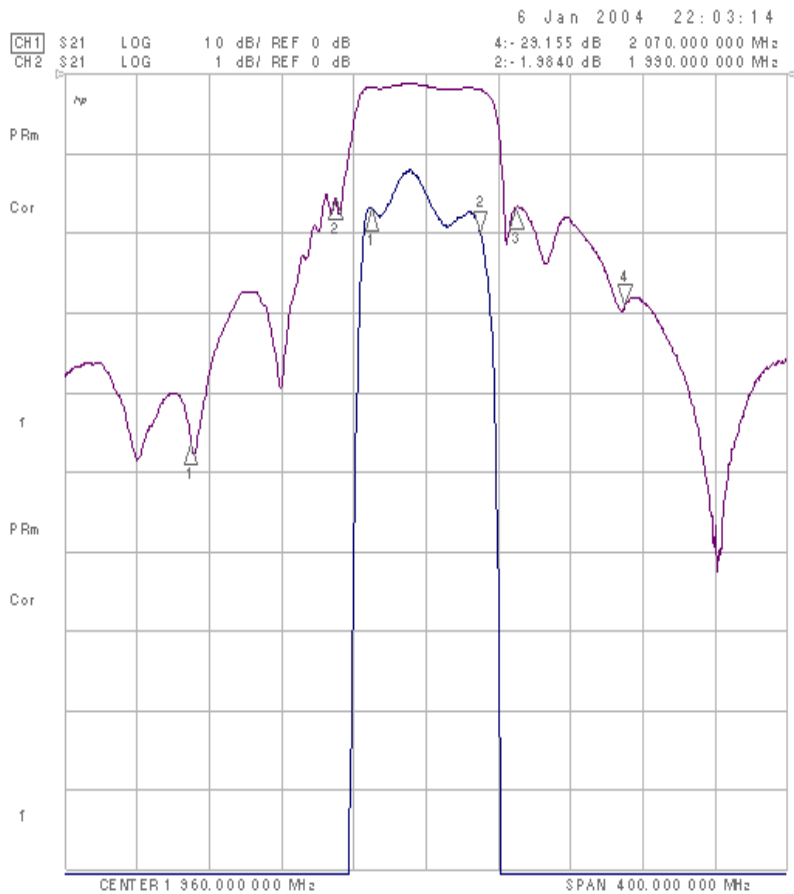
PCS1900 Rx SAW Filter

----- Unbalanced input and unbalanced output -----

Part No. :

Design No. : T1960T5D2

Jig Loss = 0.2dB



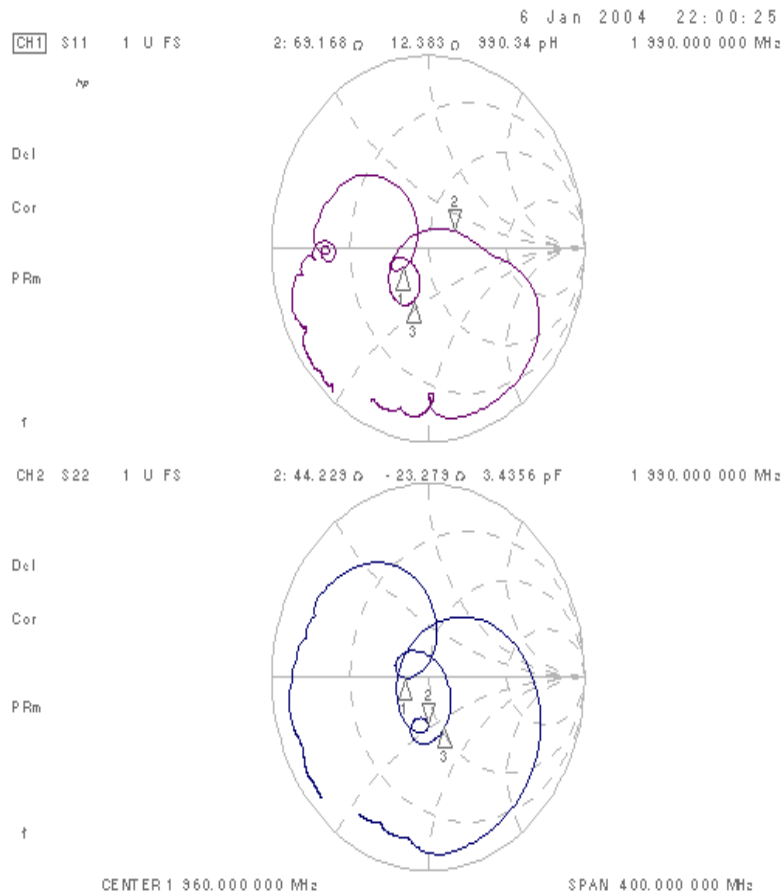
PCS1900 Rx SAW Filter

----- Unbalanced input and unbalanced output -----

Part No. :

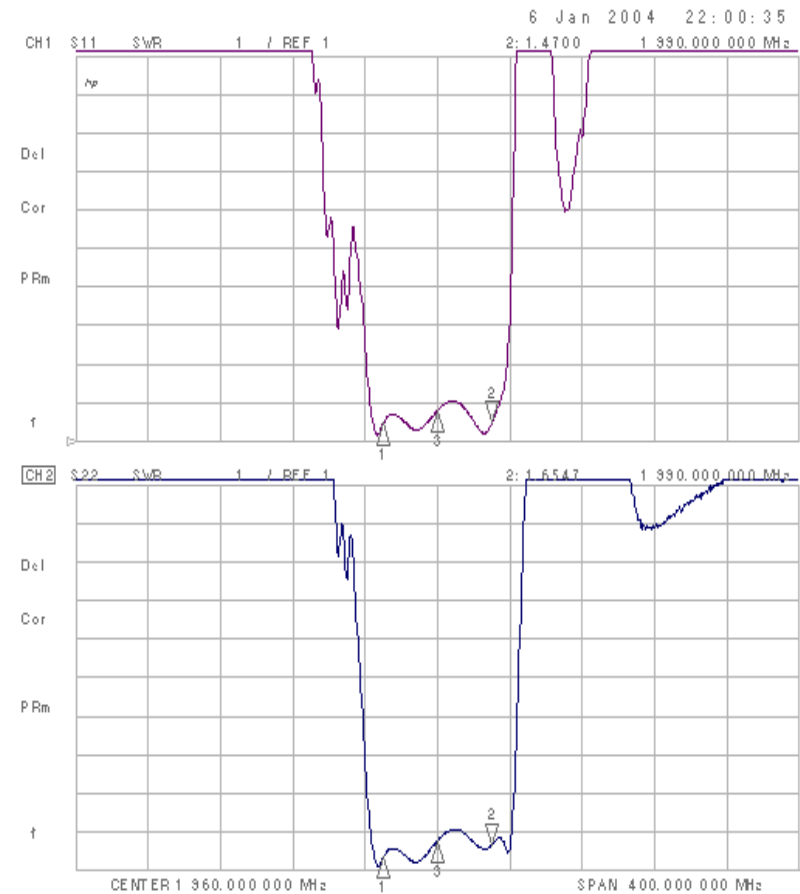
Design No. : T1960T5D2

Jig Loss = 0.2dB



CH1 Markers
1: 35.445 ρ
-7.5463 ρ
1.93000 GHz
3: 36.119 ρ
-21.438 ρ
1.96000 GHz

CH2 Markers
1: 37.051 ρ
-417.97 m ρ
1.93000 GHz
3: 53.303 ρ
-29.773 ρ
1.96000 GHz



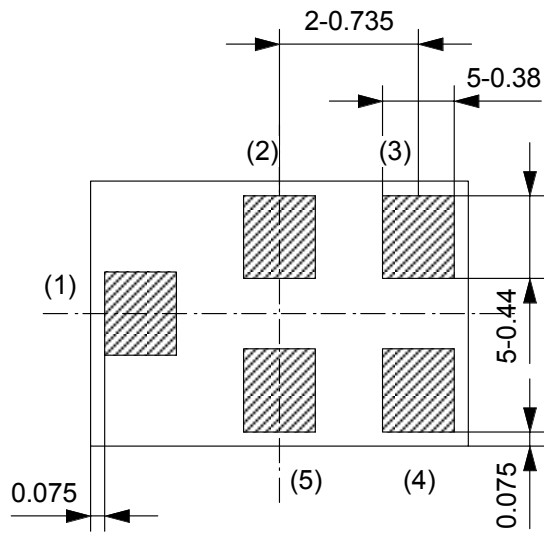
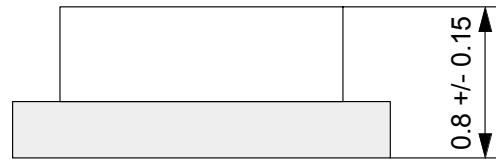
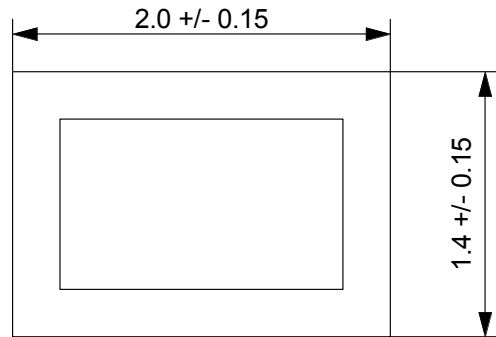
CH1 Markers
1: 1.4726
1.93000 GHz
3: 1.8110
1.96000 GHz

CH2 Markers
1: 1.3500
1.93000 GHz
3: 1.7743
1.96000 GHz

THIRD ANGLE PROJECTION

Tolerance : +/-0.05

Under Development



- (1) Input
- (2) GND
- (3) GND
- (4) Output
- (5) GND

Note :
The design manufacturing process,
and Specification of this device
are subject to change without
notice.

UNLESS OTHERWISE SPECIFIED		
BASIC DIMENSIONS		TOLERANCE
UP TO	INCL	
TO	INCL	
TO	INCL	
TO	INCL	
ABOVE		

--	--	--

ISSUE	REVISIONS	DATE
MATERIAL	FINISH	SCALE
DESIGN		
DRAW		
CHECK		
APPROVAL		
DRAWING NO.		

DO NOT SCALE DRAWING

REVISIONS INDICATED BY Δ

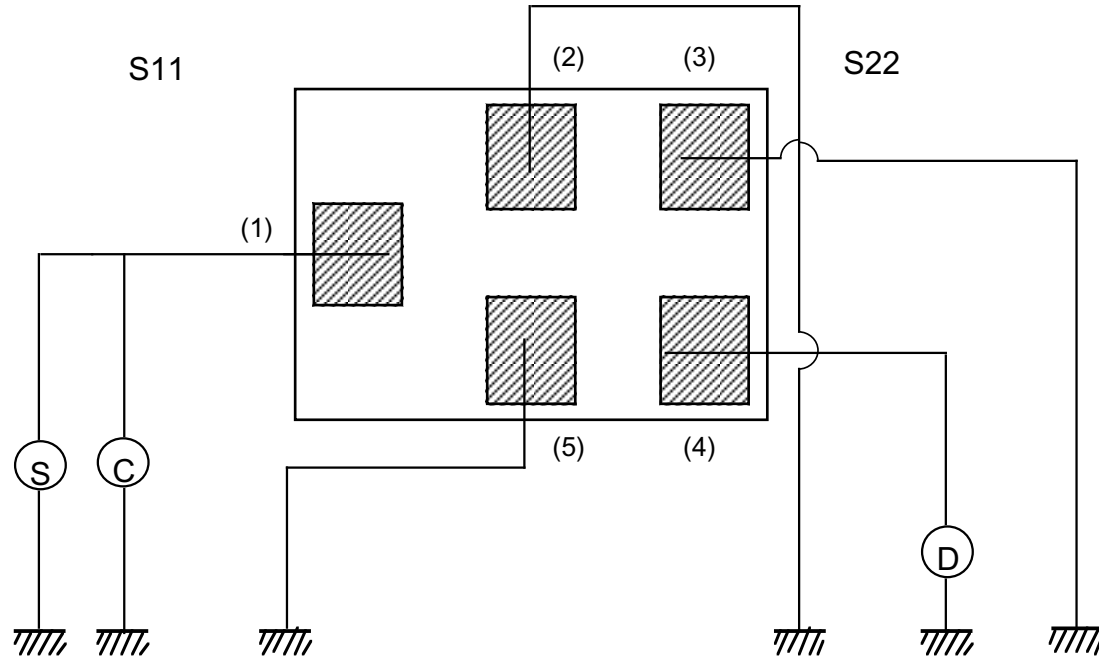
ALL DIMENSIONS ARE IN MILLIMETERS

NAME
SAW Filter

TYPE NO.

**CERAMIC BUSINESS UNIT, LCR DEVICE COMPANY
MATSUSHITA ELECTRONIC COMPONENTS CO.,LTD.
KADOMA, OSAKA, JAPAN**

THIRD ANGLE PROJECTION



0 Level

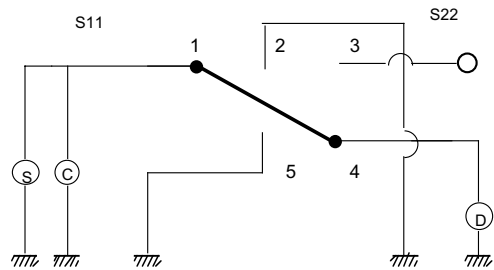


Fig. 2

S : Standard Signal Generator
(Output Impedance 50 ohm)
C : Frequency Counter
D : Detector
(Input Impedance 50 ohm)

UNLESS OTHERWISE SPECIFIED

BASIC DIMENSIONS		TOLERANCE
UP TO	INCL	
TO	INCL	
TO	INCL	
TO	INCL	
ABOVE		

--	--	--

ISSUE	REVISIONS	DATE
MATERIAL	FINISH	SCALE
DESIGN		
DRAW		
CHECK		
APPROVAL		
DRAWING NO.		

NAME	TYPE NO.
------	----------

SAW filter

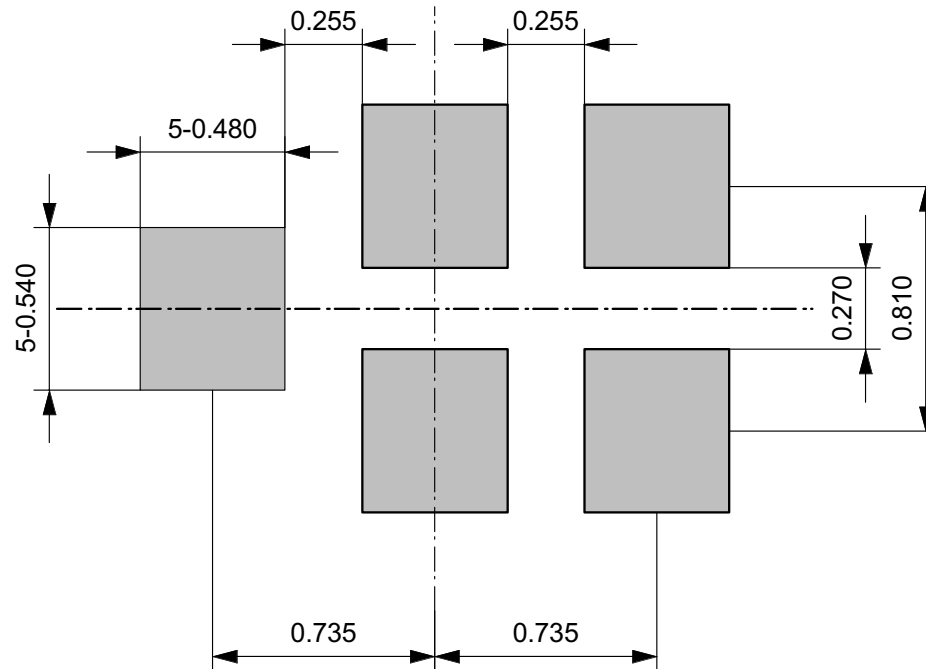
CERAMIC BUSINESS UNIT , LCR DEVICE COMPANY
MATSUSHITA ELECTRONIC COMPONENTS CO.,LTD.
KADOMA, OSAKA, JAPAN

THIRD ANGLE PROJECTION

UNLESS OTHERWISE SPECIFIED

BASIC DIMENSIONS		TOLERANCE
UP TO	INCL	
TO	INCL	
TO	INCL	
TO	INCL	
ABOVE		

Recommended land pattern



Note :
 The design manufacturing process, and Specification of this device are subject to change without notice.

--	--	--

ISSUE	REVISIONS	DATE
MATERIAL	FINISH	SCALE
DESIGN		
DRAW		
CHECK		
APPROVAL		
DRAWING NO.		

NAME	SAW Filter	TYPE NO.
------	------------	----------

**CERAMIC BUSINESS UNIT, LCR DEVICE COMPANY
 MATSUSHITA ELECTRONIC COMPONENTS CO.,LTD.
 KADOMA, OSAKA, JAPAN**

DO NOT SCALE DRAWING

REVISIONS INDICATED BY Δ

ALL DIMENSIONS ARE IN MILLIMETERS