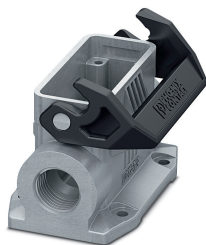


Housing - HC-STA-D15-SLWS-2SSM20-EL-AL - 1424364


Please be informed that the data shown in this PDF Document is generated from our Online Catalog. Please find the complete data in the user's documentation. Our General Terms of Use for Downloads are valid (<http://phoenixcontact.com/download>)



Box mounting bases D15, with single locking latch, material: Die-cast aluminum, salt water resistant, cable outlets: 2, lateral, height: 52 mm, cable gland: none, support sleeve: no, 2x M20, Standard



Key Commercial Data

| | |
|--------------|---|
| Packing unit | 1 pc |
| GTIN |  4 0 5 5 6 2 6 3 7 1 0 6 1 |
| GTIN | 4055626371061 |

Technical data

Dimensions

| | |
|--------|-------|
| Height | 52 mm |
| Width | 51 mm |
| Length | 80 mm |

Ambient conditions

| | |
|---------------------------------|-------------------|
| Degree of protection (IP) | IP66 |
| | IP67 |
| Ambient temperature (operation) | -40 °C ... 125 °C |

General

| | |
|------------------------------|---------------------------|
| Size | D15 |
| Housing type | Box mounting bases |
| Color | gray aluminum |
| Locking type | with single locking latch |
| No. of cable outlets | 2 |
| Cable outlet | lateral |
| Screw connection | none |
| Type of the screw connection | 2x M20 |

Housing - HC-STA-D15-SLWS-2SSM20-EL-AL - 1424364

Technical data

General

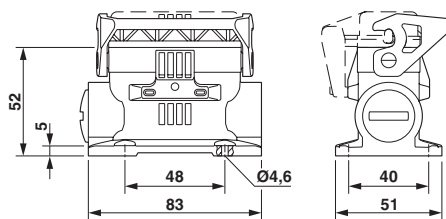
| | |
|--|---|
| Housing material | Die-cast aluminum, salt water resistant |
| Housing surface material | uncoated |
| Material lock | PA |
| Flammability rating according to UL 94 | V0 (Interlock) |
| Assembly instructions | One opening is sealed with a plastic filler plug and can be opened using a screwdriver. |

Environmental Product Compliance

| | |
|------------|---|
| China RoHS | Environmentally Friendly Use Period = 50 years |
| | For details about hazardous substances go to tab "Downloads", Category "Manufacturer's declaration" |

Drawings

Dimensional drawing



Dimensional drawing

Classifications

eCl@ss

| | |
|---------------|----------|
| eCl@ss 10.0.1 | 27440202 |
| eCl@ss 11.0 | 27440202 |
| eCl@ss 5.1 | 27261200 |
| eCl@ss 6.0 | 27261200 |
| eCl@ss 7.0 | 27440202 |
| eCl@ss 9.0 | 27440202 |

ETIM

| | |
|----------|----------|
| ETIM 6.0 | EC000437 |
| ETIM 7.0 | EC000437 |

Approvals

Approvals

Housing - HC-STA-D15-SLWS-2SSM20-EL-AL - 1424364

Approvals

Approvals

UL Recognized / cUL Recognized / DNV GL / EAC / cULus Recognized

Ex Approvals

Approval details

| | | | |
|------------------|--|---|--------------------------|
| UL Recognized | | http://database.ul.com/cgi-bin/XYV/template/LISEXT/1FRAME/index.htm | E255026 |
| cUL Recognized | | http://database.ul.com/cgi-bin/XYV/template/LISEXT/1FRAME/index.htm | E255026 |
| DNV GL | | https://approvalfinder.dnvgl.com/ | TAE000037S |
| EAC | | | RU C- DE.BL08.B.00511 |
| cULus Recognized | | | |

Accessories

Accessories

Corrugated pipe screw connection

Screw connection - WP-G HF IP66 M20 BK - 3240898



Cable gland, metric thread, IP66 protection, straight

Housing - HC-STA-D15-SLWS-2SSM20-EL-AL - 1424364

Accessories

Screw connection - WP-G HF IP69K M20 BK - 3240884



Cable gland, metric thread, IP68/69k protection, straight

Screw connection - WP-GA HF IP66 M20 BK - 3240926



Cable gland, metric thread, IP66 protection, angled

Screw connection - WP-GA HF IP69K M20 BK - 3240912



Cable gland, metric thread, IP68/69k protection, angled

Screw connection - WP-GR HF IP66 M20 BK - 3240954



Cable gland, metric thread, IP66 protection, with strain relief

Screw connection - WP-GR HF IP69K M20 BK - 3240940



Cable gland, metric thread, IP68/69k protection, with strain relief

Housing - HC-STA-D15-SLWS-2SSM20-EL-AL - 1424364

Accessories

Screw connection - WP-G PP HF M20 - 3240998



Cable gland made from PP with metric thread, IP65 protection

Screw connection - WP-GT PP HF M20 - 3241012



Cable gland made from PP with metric thread, rotatable, IP54 protection

Screw connection - WP-G BRASS IP40 M20 - 3241047



Cable gland made from brass with metric thread, IP40 protection

Screw connection - WP-GT BRASS M20 - 3241033



Cable gland made from brass with metric thread, rotatable, IP40 protection

Screw connection - WP-G BRASS IP65 M20 - 3241061



Cable gland made from brass with metric thread, IP65 protection

Full screw connection

Housing - HC-STA-D15-SLWS-2SSM20-EL-AL - 1424364

Accessories

Cable gland - G-INS-M20-S68N-NNES-S - 1411163



Cable gland, cable gland material: Nickel-plated brass, external cable diameter 6 mm ... 12 mm, shielding: no, connecting thread: M20 x 1.5, color: silver, with O-ring

Cable gland - G-INSEC-M20-S68N-NCRS-S - 1411189



Cable gland, cable gland material: Nickel-plated brass, external cable diameter 9 mm ... 13 mm, shielding: yes, connecting thread: M20 x 1.5, color: silver, with O-ring

Cable gland - G-INS-M20-M68N-SNES-S - 1424543



Cable gland, cable gland material: Stainless steel 1.4305, external cable diameter 6 mm ... 12 mm, shielding: no, connecting thread: M20 x 1.5, color: silver, with O-ring

Module carrier frame

Module carrier frame - HC-M-D15-MF-HB - 1062122

Module carrier frame, size: D15, 0.14 mm² ... 2.5 mm², application: Module carrier frame, for size D15 housings



Plug for cable screw gland

Screw plug - A-INSP-M20-65N-P-BK - 1415206



Screw plug, material: PA, connecting thread: M20 x 1.5, color: jet black RAL 9005, with O-ring

Housing - HC-STA-D15-SLWS-2SSM20-EL-AL - 1424364

Accessories

Screw plug - HC-M-BS-M20 - 1645846



Screw plug, cable gland material: Nickel-plated brass, connecting thread: M20 x 1.5, color: silver

Phoenix Contact 2021 © - all rights reserved
<http://www.phoenixcontact.com>

PHOENIX CONTACT GmbH & Co. KG
Flachsmarktstr. 8
32825 Blomberg
Germany
Tel. +49 5235 300
Fax +49 5235 3 41200
<http://www.phoenixcontact.com>