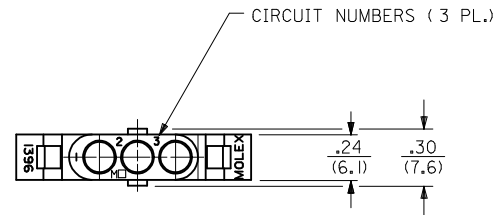
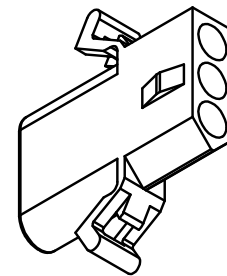
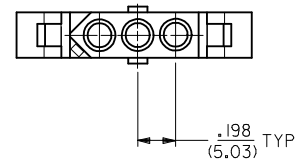
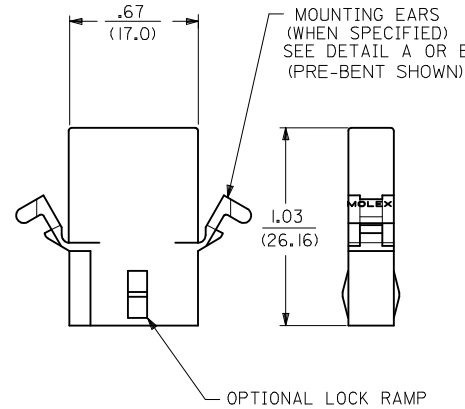


**PLUG**

1396-P SHOWN ABOVE ( WITH STANDARD MOUNTING EAR)

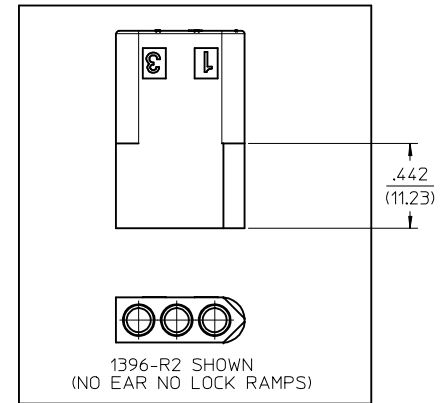


ALTERNATE END CONFIGURATION  
SEE NOTE A



**RECEPTACLE**

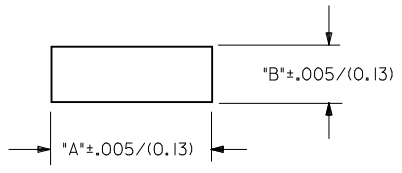
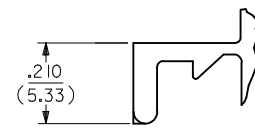
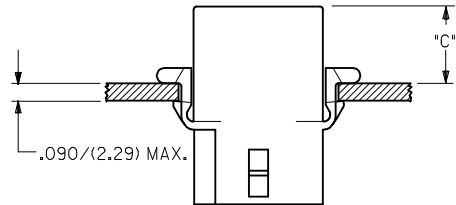
1396-R4 SHOWN ( WITH PRE-BENT EAR)



ADD PK-1396-002 EC NO: UCP2016-2183 DRWN:KIPPER 2015/12/09 CHKD:JBELL 2015/12/09 APPR:FSMITH 2015/12/23	DESCRIPTION REV 1	QUALITY SYMBOLS ▽=0 ▽=0 ▽=0	GENERAL TOLERANCES (UNLESS SPECIFIED)		DIMENSION STYLE <b>IN/MM</b>	SCALE <b>2:1</b>	DESIGN UNITS <b>INCH</b>	THIRD ANGLE PROJECTION	
		4 PLACES ± --- ± --- 3 PLACES ± --- ± .010 2 PLACES ± 0.25 ± .014 1 PLACE ± 0.35 ± --- 0 PLACE ± --- ± ---	mm INCH ± --- ± --- ± .010 ± .014 ± 0.35 ± --- ± --- ± ---	DRAWN BY JJS	DATE 1988/04/08	TITLE <b>.093/(2.36) HOUSING          PLUG AND RECEPTACLE          3 CIRCUIT .198 CENTERS</b>			
		ANGULAR ±1/2°		CHECKED BY RW	DATE 1988/04/08	<b>molex</b>			
		DRAFT WHERE APPLICABLE MUST REMAIN WITHIN DIMENSIONS		APPROVED BY FSMITH	DATE 2014/06/23				

13	12	11	10	9	8	7	6	5	4	3	2	1
PLUG		RECEPTACLE										
ORDER NO.	ENG. NO.	ORDER NO.	ENG. NO.									
03-09-2031	I396-P	03-09-1031	I396-R									
03-09-2032	I396-P1	03-09-1032	I396-R1									
03-09-7032	I396-PIBK	03-09-1033	I396-R2									
03-09-7031	I396-PBK	03-09-6033	I396-R2BK									
03-09-2037	I396-P3	03-09-6032	I396-RIBK									
		03-09-6031	I396-RBK									
		03-09-1081	I396-R4									

HOUSING	DIM. "A"	DIM. "B"	"C" PREBENT EAR	"C" STANDARD EAR
PLUG	.933/(23.70)	.375/(9.53)	.40/(10.2)	.38/(9.7)
RECEPT.	.830/(21.08)	.312/(7.92)	.41/(10.4)	.39/(9.9)



**DETAIL A**  
STANDARD MOUNTING EAR  
(SCALE 4:1)

**LEGEND:**  
I396-\*\*\*\*-\*

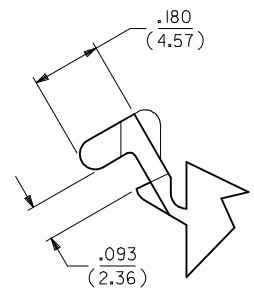
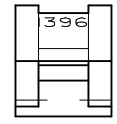
P = PLUG  
R = RECEPTACLE

BLANK = WITH STANDARD EARS  
1 = WITHOUT EARS  
2 = RECEPTACLE WITHOUT EARS, WITHOUT LOCK RAMPS  
3 = PLUG ONLY, W/ SIDE MOUNT (SEE SD-I396-P3)  
4 = WITH PREBENT EARS

COLOR: BLANK=NATURAL COLOR  
AM=AMBER BK=BLACK BU=BLUE  
BN=BROWN GY=GRAY GN=GREEN  
OR=ORANGE RD=RED YW=YELLOW

BLANK = NYLON 6/6, 94V-2

RECOMMENDED PANEL MOUNTING HOLE



**DETAIL B**  
PREBENT MOUNTING EAR  
(SCALE 4:1)

**NOTES:**

- MATERIAL: SEE LEGEND
  - FINISH: NOT APPLICABLE
  - PRODUCT SPECIFICATION: PS-02-09
  - PACKAGING INFORMATION: REFER TO PK-1396-002
- △ DIMENSION FROM THE BACK OF THE HOUSING TO THE END OF BRUSH ON WIRE INSERTED INTO THE HOUSING:  
DIM "A"= .256/6.50 FOR 42477 & 42478 TERMINALS  
.216/5.49 FOR ALL OTHER .093 TERMINALS  
DIM "B"= .377/9.58 FOR 42477 & 42478 TERMINALS  
.337/8.56 FOR ALL OTHER .093 TERMINALS
- △ CIRCUIT I.D. NUMBERS ON SIDE OF HOUSING APPEAR ON PARTS FROM TOOLS BUILT AFTER 5/4/93.
- △ END CONFIGURATION IS DEPENDENT ON MOLD DESIGN. PARTS MAY HAVE EITHER CONFIGURATION.
- PARTS CONFORM TO CLASS B REQUIREMENTS OF COSMETIC SPECIFICATION PS-45499-002.

REV	DESCRIPTION	QUALITY SYMBOLS	GENERAL TOLERANCES (UNLESS SPECIFIED)		DIMENSION STYLE	SCALE	DESIGN UNITS	THIRD ANGLE PROJECTION
			mm	INCH	IN/MM	2:1	INCH	☉
4	PLACES	± ---	± ---	± ---				
3	PLACES	± ---	± .010	± .014				
2	PLACES	± 0.25	± .014	± ---				
1	PLACE	± 0.35	± ---	± ---				
0	PLACE	± ---	± ---	± ---				
			ANGULAR ±1/2°		MATERIAL NO.	SCALE	DESIGN UNITS	THIRD ANGLE PROJECTION
SEE SHEET 1			DRAFT WHERE APPLICABLE MUST REMAIN WITHIN DIMENSIONS		SEE CHART	DOCUMENT NO.	SD-1396-*	SHEET NO. 2 OF 2
EC NO: UCP2016-2183			APPROVED BY: FSMITH		DATE: 2014/06/23			
DRWN:KIPPER			CHKD:BELLS		DATE: 1988/04/08			
2015/12/09			2015/12/09		DATE: 1988/04/08			
APPR:FSMITH			2015/12/23					